



Municipal Class Environmental Assessment

Presentation
Arts, Culture and Heritage Committee

Ontario Environmental Assessment Act

The purpose of the *Ontario Environmental Assessment Act* (“The Act”) is to provide for:

...the betterment of the people of the whole or any part of Ontario by providing for the protection, conservation and wise management in Ontario of the Environment (Part 1, Section 2)

Ontario Environmental Assessment Act

In applying the requirements of the Act to municipal undertakings, the Act identifies two types of environmental assessment planning and approval processes:

- ▶ Individual Environmental Assessments (Part II of the Act)
- ▶ Class Environmental Assessments (Part II.1 of the Act)

Class Environmental Assessments

- ▶ Planning process for projects that are/have:
 - Common characteristics (similar nature, limited scale)
 - Predictable range of environmental effects
 - Responsive to mitigating measures
- ▶ The Municipal Class EA process allows municipalities to undertake these sorts of projects following a Class EA process rather than an individual EA.

Class Environmental Assessments

- ▶ Projects are considered approved subject to compliance with an approved Class EA
- ▶ The Municipal Class Environmental Assessment (Class EA) is a planning process approved under *the Act* that is used by municipalities to plan infrastructure enhancement projects while satisfying the requirements of *the Act*.

Key Principals of EA Planning

- ▶ Consultation with effected parties early and throughout the process
- ▶ Consideration of a reasonable range of alternatives – “Do Nothing” alternative must be considered
- ▶ Identification & consideration of the effects of each alternative on all aspects of the environment
- ▶ Systematic evaluation of alternatives to determine their net environmental effects
- ▶ Provision of clear and complete documentation of the planning process followed

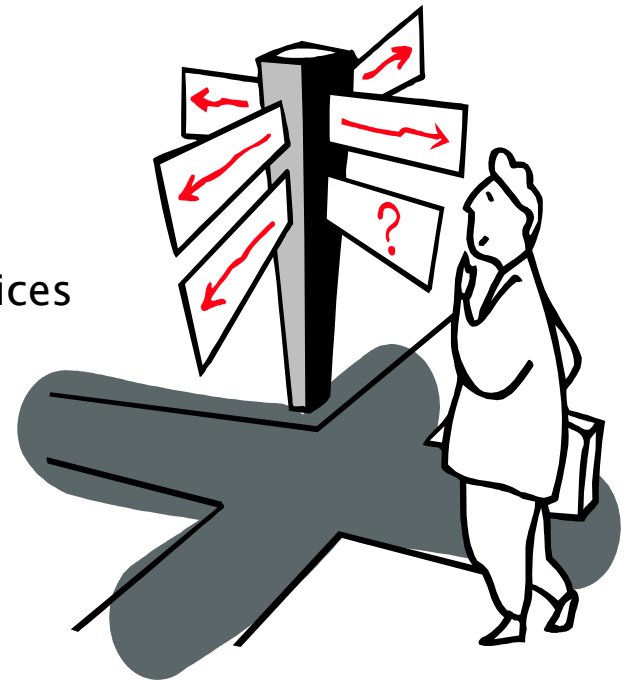
Features of the Class EA

► Municipal Infrastructure Projects

- Planning and Decisions Making Process
- Defines the planning and design of infrastructure projects
- Ensures all environmental impacts are considered
- Ensures impacts are appropriately mitigated

► Definition

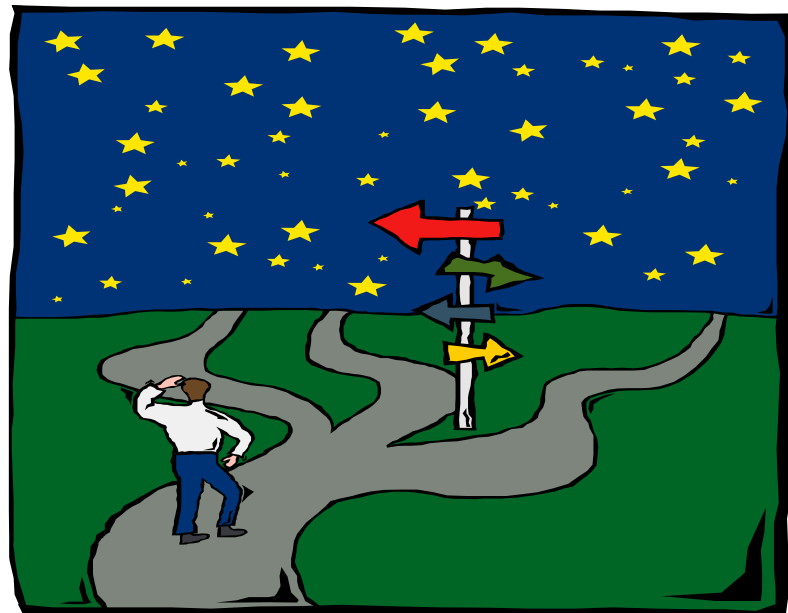
- Environment:
 - Air, land or water
 - Plant and animal (including human) life
 - Social, economic, and cultural conditions
 - Buildings, structures, machine or other devices made by humans
 - Any solid, liquid, gas, odour, heat, sound, vibration or radiation resulting directly or indirectly from human activities
 - Any part or combination of the above



Features of the Class EA

► Project Classification

- Projects are classified according their environmental significance
- Classification results in different 'schedules' of projects
- Schedules prescribe the planning methodologies for each category
- Four schedules currently recognized: A, A+, B and C
- Schedule A projects have minimal adverse effects while Schedule C projects have potential for significant environmental effects



Project Schedules

▶ Schedule A

- Normal or emergency operational and maintenance activities
- Usually minimal environmental effects – pre-approved

▶ Schedule A+

- Pre-approved, however public notification required

▶ Schedule B

- Potential for some adverse environmental effects
- Requires completion of screening process and public consultation

▶ Schedule C

- Potential for significant environmental effects
- Must proceed through full planning and documentation procedures
- Environmental Study Report must be completed and filed for public/agency review

Planning and Design Process

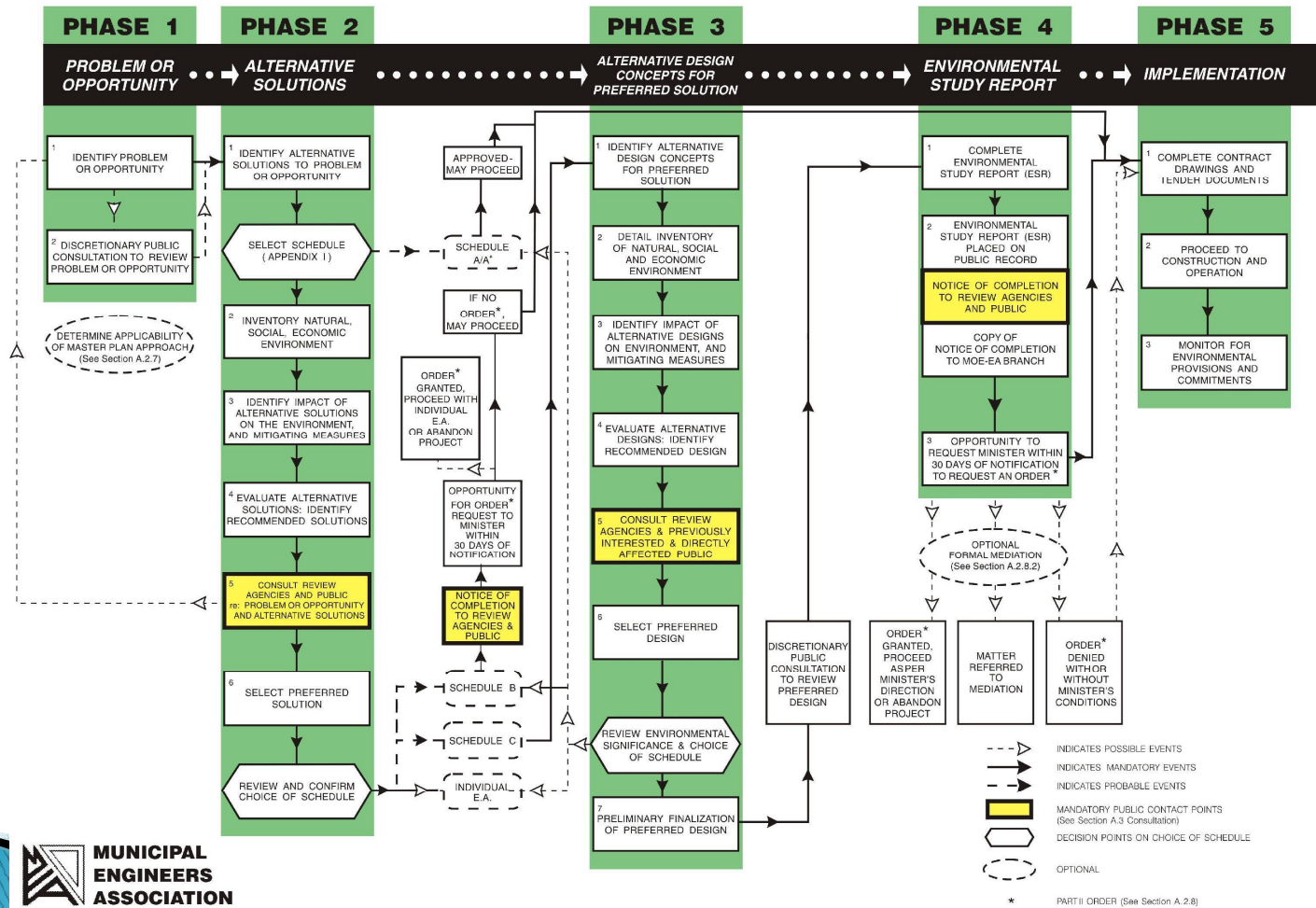
- ▶ Planning process is separated in 5 Phases
 - Phase 1
 - identify problem or opportunity
 - Phase 2
 - identify alternate solutions and establish preferred solution (taking into account public and agency input)
 - Determine/verify project schedule
 - Phase 3
 - Examine alternative methods to implement preferred solution
 - Based on existing environment, public & agency input, anticipated effects and methods to mitigate effects
 - Phase 4
 - Prepare Environmental Study Report
 - Documents rationale, planning, design and consultation process
 - Available for public review
 - Phase 5
 - Complete design, proceed to construction and operation
 - Monitoring
- ▶ Provided the correct planning process is followed, proponents have complied with the requirements of the Act.

Planning and Design Process

EXHIBIT A.2

MUNICIPAL CLASS EA PLANNING AND DESIGN PROCESS

NOTE: This flow chart is to be read in conjunction with Part A of the Municipal Class EA

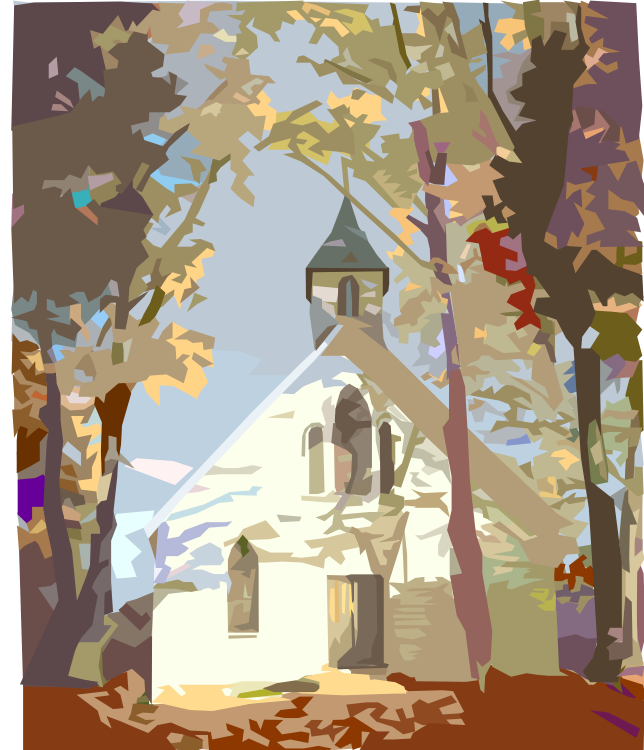


Environmental Considerations

- ▶ All aspects of the environment must be considered
 - Natural Environment
 - Social Environment
 - Cultural Environment
 - Built Environment
 - Economic Environment
- ▶ Must consider the effects each alternative has on all aspects of the Environment
 - Detail varies depending on significance of the effect and the stage of the study

Cultural Environment

- ▶ Cultural Environment is one aspect of the environment considered during an EA
- ▶ Cultural Environment refers to:
 - Cultural heritage in the environment
 - Archaeological resources in the environment



Cultural Environment

Cultural Heritage Resources:

- Built Heritage Resources
 - One or more significant buildings, structures, monuments, installations
 - Associated with architectural, cultural, social, political, economic or military history and identified as being important to a community (through designation, or heritage conservation easement under *Ontario Heritage Act*) or listed by local, provincial or federal jurisdiction
- Cultural Heritage Landscape
 - Defined geographical area of heritage which has been modified by human activity and is valued by a community
 - Involves grouping(s) of individual heritage features that collectively form a distinctive entity from the individual elements

Archaeological Resources:

- Archaeological Resources
 - Artifacts, archaeological sites, marine archaeological sites. Based upon archaeological fieldwork undertaken in accordance with the *Ontario Heritage Act*
- Areas of Archaeological Potential
 - Areas with the likelihood to contain archaeological resources. Potential is determined by Provincial criteria.

Municipal Class EA Process

Key Features

- ▶ Early Consultation
- ▶ Reasonable Range of Solutions Considered
- ▶ Assessment of Environmental Effects
- ▶ Systematic Evaluation of Alternatives
- ▶ Clear Documentation
- ▶ Traceable Decision Making



Municipal Class Environmental Assessment Summary

Most projects undertaken by municipalities in Ontario fall under the *Ontario Environmental Assessment Act*

The Class EA is a streamlined process designed to satisfy the requirements of the *Act*

The Class EA encompasses most of the project types planned by the City

Public/Agency/Stakeholder participation during the process is critical

Questions

