

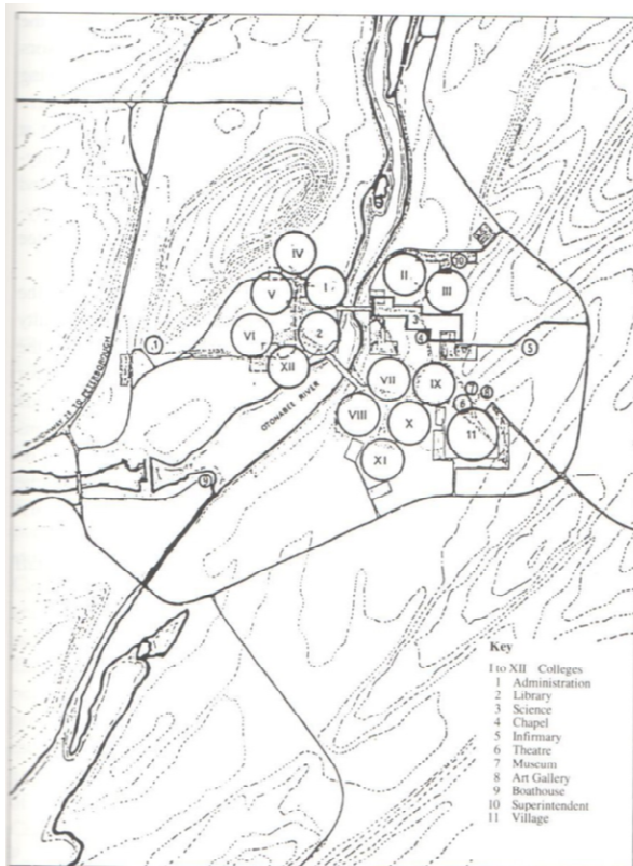
Heritage Stewardship

A Presentation to Arts, Culture and Heritage Committee, 13 April 2017

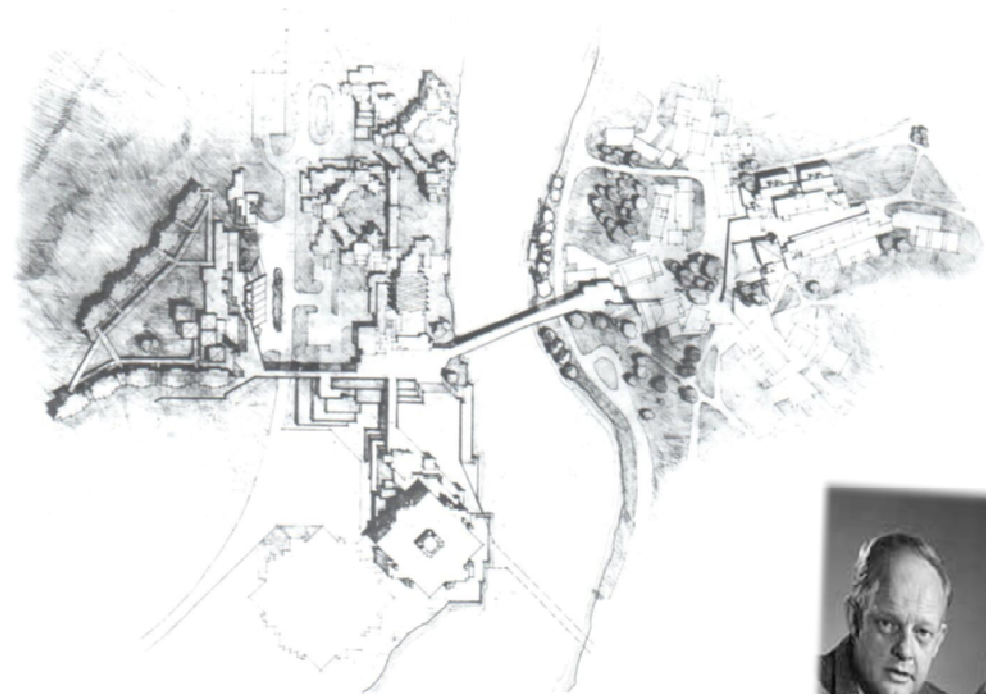
Dr. Michael Eamon, Co-Chair Trent University Heritage Stewardship Committee



Ron Thom & the Trent Master Plan



Ron Thom's Master Plan shaped the core of the campus.



"Architecture is itself a response to situation... [it must be] flexible and human."

-- Ron Thom, 1968.

Part of an International Legacy of Modernism



Eero Saarinen's Samuel F.B. Morse and Ezra Stiles Colleges, Yale University



Champlain College, Trent University



Frank Lloyd Wright's Falling Water



Academic Wing. Lady Eaton College, Trent University





Le Corbusier's Notre Dame de Haut



Champlain College, Trent University



Knightsgate Bridge, Durham University, UK



Faryon Bridge, Trent University



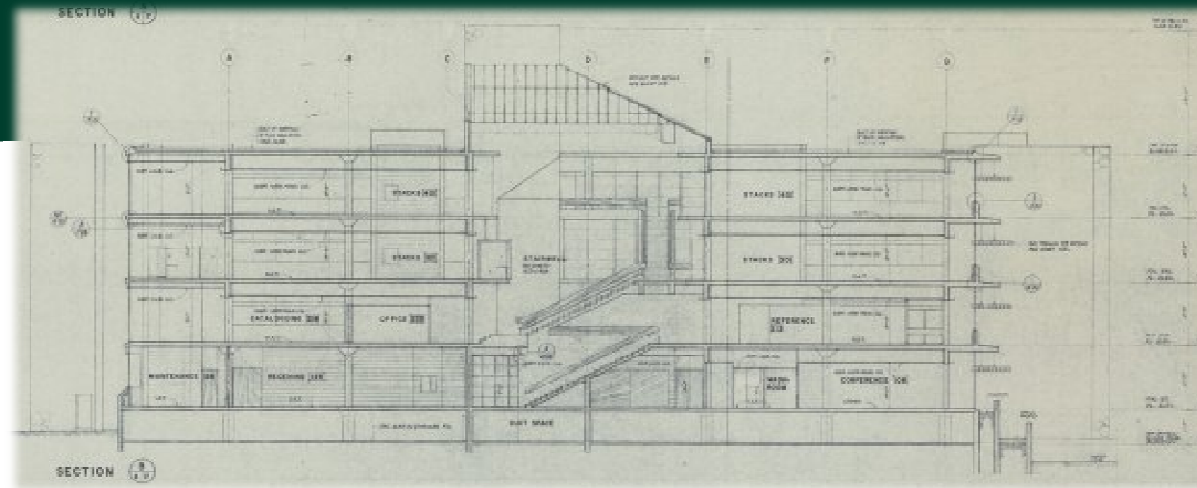
Remarkable Furniture & Total Design



What is Heritage Stewardship?

- Identification, knowledge & appreciation of important cultural assets, buildings, natural & sacred spaces.
- Policies & procedures that facilitate new growth & maintain current assets of lasting significance.
- A commitment to the ideal that the University's spaces inspire & elevate learning and offer an unique student experience.





Trent University Statement of Heritage Stewardship

Trent University has always been committed to and celebrated for its outstanding student experience delivered in a natural and built setting that inspires and elevates learning. In particular, Trent's initial buildings designed by Ron Thom, are recognized as important architectural assets in the mid-century Modern style. Recognizing our primary role as an academic institution and cognizant of our limited financial capabilities, the University acknowledges the importance of maintaining the spaces we have inherited for both their academic and cultural value. Trent is committed to establishing appropriate heritage management policies and engaging others to assist in active promotion and raising funds to ensure heritage features, sacred spaces and cultural resources are available for future generations to enjoy.

Some Notable Dates

- Decorative Arts Index, 2003
- Architectural Conservancy Conference, 2009
- *Ad hoc* Heritage Committee, 2013
- *Ron Thom and the Allied Arts*, 2014
- 50th Anniversary Plaques, 2014
- Heritage Furniture Inventory, 2015
- Heritage Stewardship Committee, 2016
- Draft Heritage Policy, 2016
- Heritage Policy Reviewed by ARA, 2017
- Final Policy Submitted for Approval, 2017
- ARA Report and Inventory, 2017

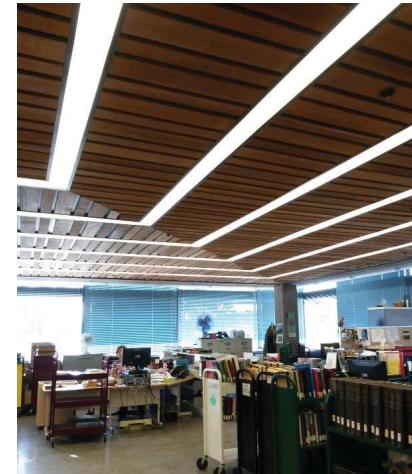
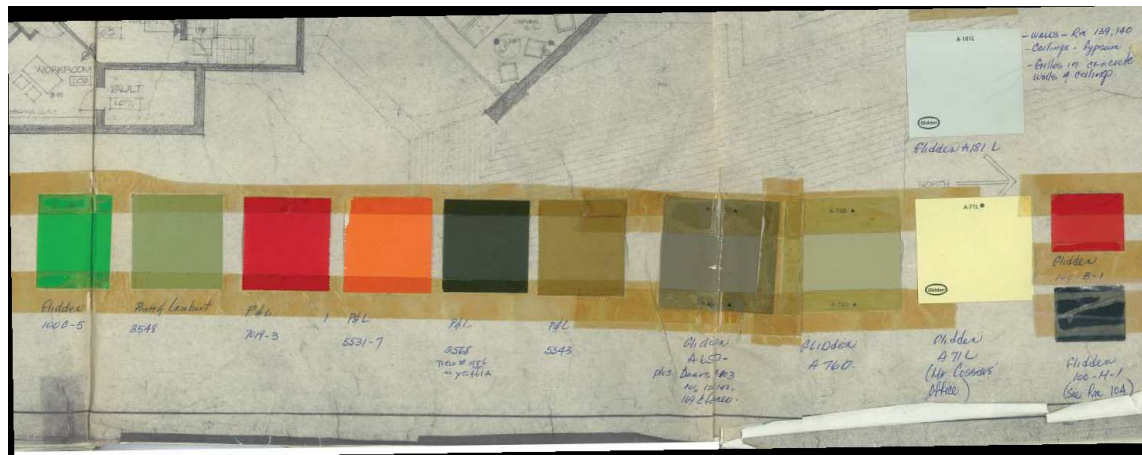


ARA/AREA Report and Inventory



- Review of Draft Heritage Stewardship Policy;
- Affirms 3 levels for heritage resources;
- Inventories 26 buildings, 10 landscapes, 2 sacred spaces and items were identified throughout the Trent University for both Symons and Catharine Parr Traill College sites.
- Offers starting point for future inventories.

Bata Renovation by PERKINS + WILL CHER and Heritage Review by ARA/AREA





<https://www.trentu.ca/batatransformation/welcome/honouring-ron-thom-heritage/design-response-key-heritage-attributes>



CHALLENGE THE WAY YOU THINK