

(08-1838) - 1300 names per 36"x66" panel

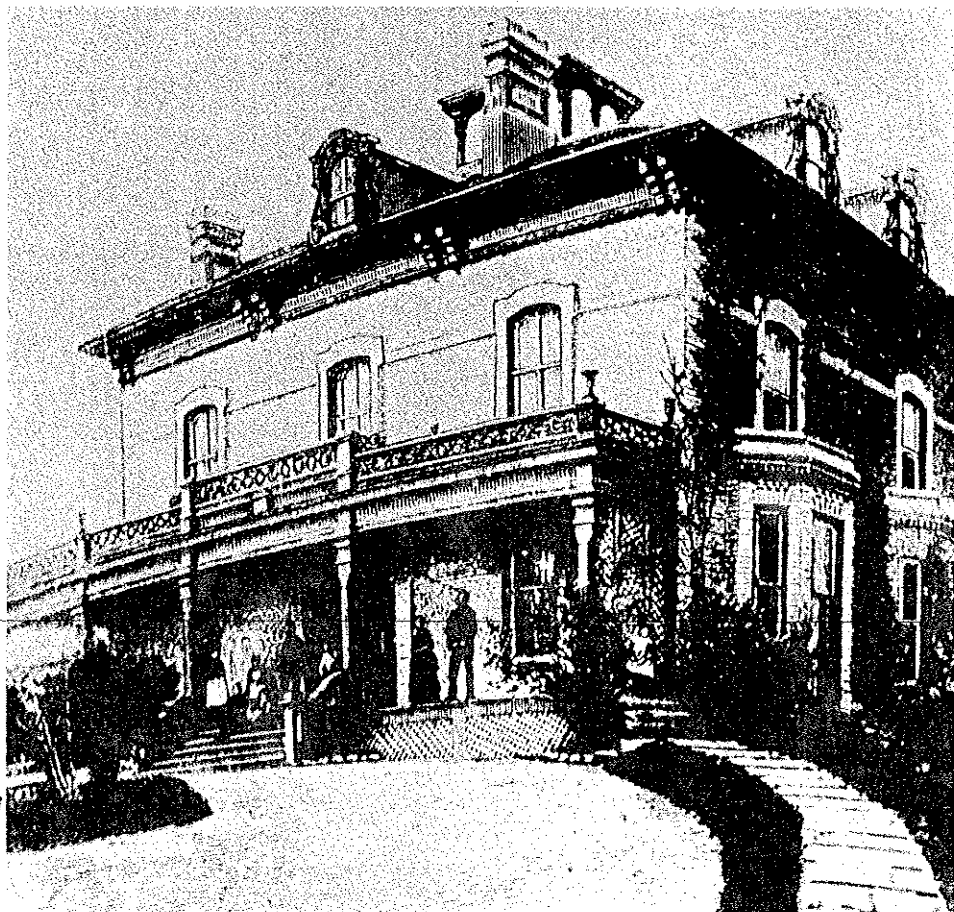
Designed Exclusively for
Campbell Monument Company
by K.C.Robinson, July 25, 2008

MEMORIAL PANELS (PROPOSED ARRANGEMENT OF PANELS
DIFFERS)

Campbell
Monument

*Hazelbrae
Barnardo St. west of
George St. Built for
Alexander Smith
1872-84
Dr. Barnardo's Home
1895-1923
Former location of
Barnardo Home for
Girls.*

HISTORIC PHOTOGRAPH
OF HAZELBRAE



SEE SHEET NO. 41

SEE SHEET NO. 41

SEE SHEET NO. 13

NB PARTS OF BLOCKS NOS 163 & 170
FORMERLY ON THIS SHEET IS NOW SHOWN
ON SHEET NO. 13 & BLOCKS NOS 183, 184
& 344 ON SHEET NO. 41

Scale: 100 Feet to 1 Inch.
0' 50' 100' 200' 300 Feet
A.B. Veneered Buildings are colored
Red and marked V.

QUEEN ALEXANDRA
"HAZELBRAE"
BARNARDO PROPERTY

345

186

185

188

CHURCH

355

356

AVE.

Canadian National Railway

GEORG

DENNISTOWN AVE.

SMITH

171

HARVEY

SEE SHEET NO. 13

HISTORIC MAP