



Goals

1. Make recommendations for Council's consideration related to the priorities to improve the quality of life for people that live in Peterborough City, County and Curve Lake
2. To continue to improve community engagement between residents and local government
3. To provide a framework for progress reports and outcome measurements of wellbeing

live • grow • thrive

Thanks to all who made this possible

- ✓ The Advisory Network
- ✓ Steering committee
- ✓ Project team
- ✓ Students
- ✓ Residents

live • grow • thrive



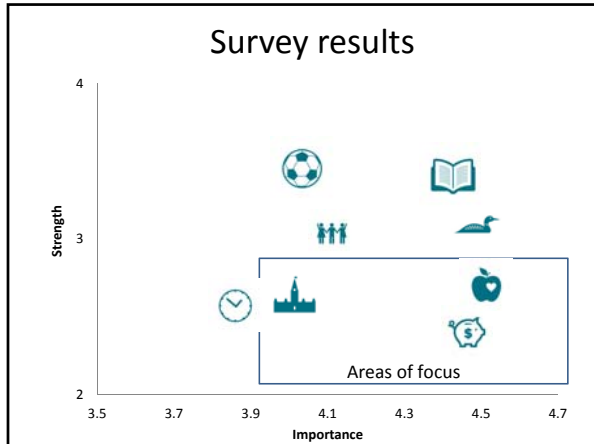
The engagement

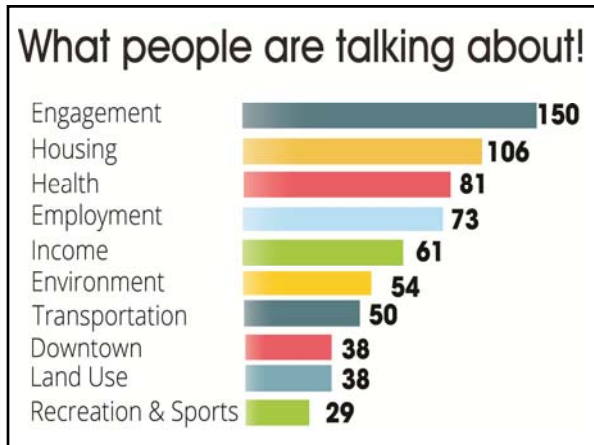
- 9 pop ups – 567 people
- 11 meetings - 162 surveys
- 4 workshops – 170 ideas
- 20 + stakeholder interviews

- 11,000 Twitter impressions
- 19,000 Facebook views
- Almost 2000 web hits
- 132 email subscribers

The image shows a tweet from Jim Russell (@jimrussell) dated 21 Nov 2017, stating 'Great conversation and review of #PeterboroughWellbeingPlan'. Below the tweet is a flyer for the 'Peterborough Community Wellbeing Plan' with a '22%' graphic and contact information for 'JOIN THE CONVERSATION'.









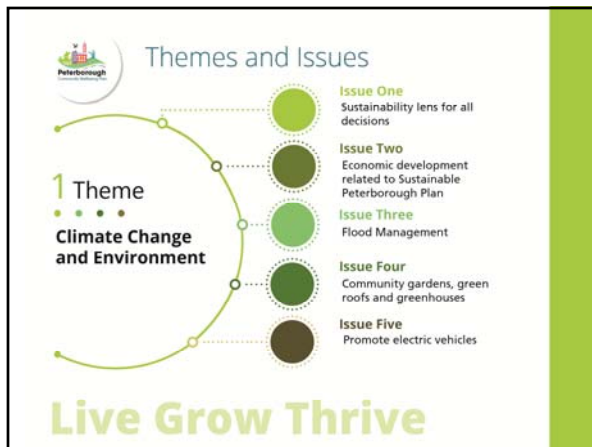















Themes and Issues

2 Theme
Supporting Democratic & Community Engagement

- Issue One**
Values- transparency and commitment
- Issue Two**
Indigenous engagement
- Issue Three**
Policy and process: communication, wards, adaptive planning
- Issue Four**
Tools: Website, social media training

Live Grow Thrive



Themes and Issues

3 Theme
Good Jobs

- Issue One**
Coordinating the employment sector
- Issue Two**
Community benefit agreements & social procurement
- Issue Three**
City as model employer: diversity, stability, training and living wage

Live Grow Thrive




Themes and Issues

4 Theme
Supporting a Healthy Community

- Issue One**
Activity and community centres (rural, youth and seniors)
- Issue Two**
Free and accessible wellbeing activities
- Issue Three**
Hubs: gathering spaces and collaborations
- Issue Four**
Support for youth

Live Grow Thrive



Themes and Issues

5 Theme
Housing

- Issue One**
Affordable rental housing
- Issue Two**
Housing for vulnerable groups (youth, seniors etc.)
- Issue Three**
Commit to reducing Peterborough homelessness to functional zero in 5 years
- Issue Four**
Improve housing through retrofits and incentives

Live Grow Thrive




Themes and Issues

6 Theme
Income and Poverty

- Issue One**
Financial literacy
- Issue Two**
Social assistance reform
- Issue Three**
Poverty reduction - basic income guarantee, living wages

Live Grow Thrive



Themes and Issues

7 Theme
Transportation

- Issue One**
Affordable and accessible public transit
- Issue Two**
Active transportation
- Issue Three**
Walking infrastructure
- Issue Four**
Cycling infrastructure
- Issue Five**
County transit

Live Grow Thrive

8 criteria for an idea to be included in the plan

1. Alignment with strategic frameworks
2. Community impact
3. Importance to community members
4. Feasibility – staff, resources, cost, time
5. Readiness
6. Partners – who is working on this?
7. Ability to move an area of focus forward
8. Based on evidence of importance - research



Wrap up





What we learned from participants in the engagement

- ✓ Improvements in the quality of life must be available to all
- ✓ The City, County, Townships, private sector and the business community must work together to enhance the quality of life in Peterborough.
- ✓ Take action



- @ www.peterborough.ca/ptbowellbeing
- ✉ ptbowellbeing@peterborough.ca
- ☎ 705-742-7777 Ext. 1477
- 🐦 #PtboWellbeing