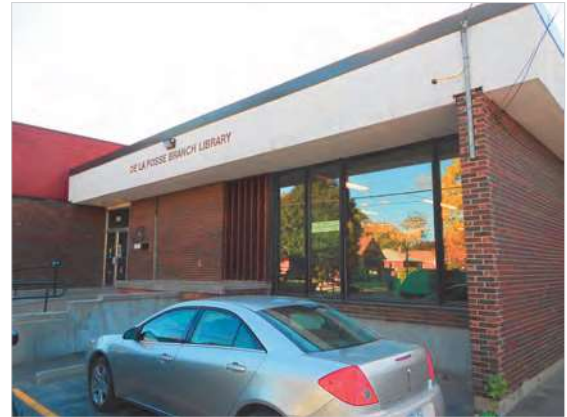


6.2.2 De La Fosse Branch on Park Street South

The De La Fosse Branch Library is a one-storey infill building in a small commercial plaza, opened in 1965. The building's net usable area is approximately 404 sm (4,350 sf).

The history of a branch library in this neighborhood dates to 1949. The Branch's main library space has multiple levels, and contains a circulation and information desk, a reference area with computer access to the Library catalogue, collections, a reading and study area, and an administration office. At the back of the main level is an unused program space with amphitheatre type seating dubbed the 'lecture pit'.



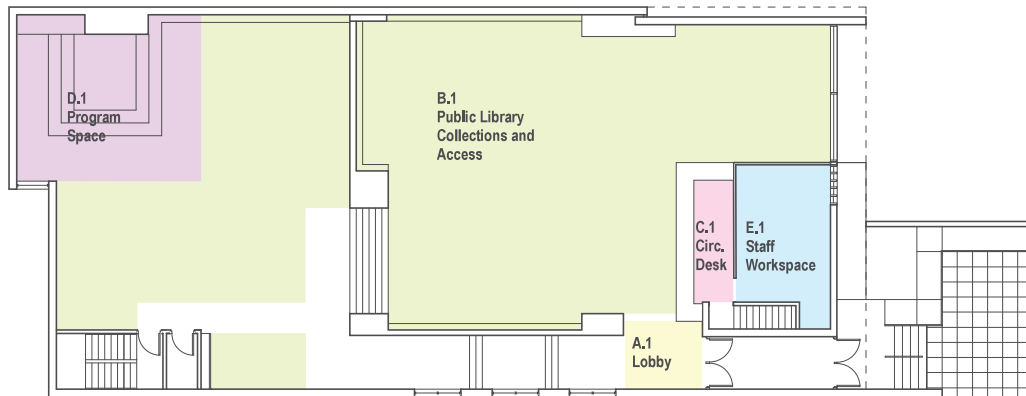
The lower basement level of the building is divided into two areas. One area is accessed from a closed staircase in the Library and contains the washrooms and a staff lunch room/work space. The other part of the lower level is accessed from a staircase at the O'Connell Street entrance at the back of the building. This space is leased to the Kawartha Arts Gallery and Studio. The De La Fosse Branch has three parking spots.

Currently, the De La Fosse Branch does not meet current standards for accessibility. Significant renovation of the space would be required to an accessible main and lower level, and include the installation of an elevator to the basement, installation of one or more interior ramps, and expansion of the existing washrooms.

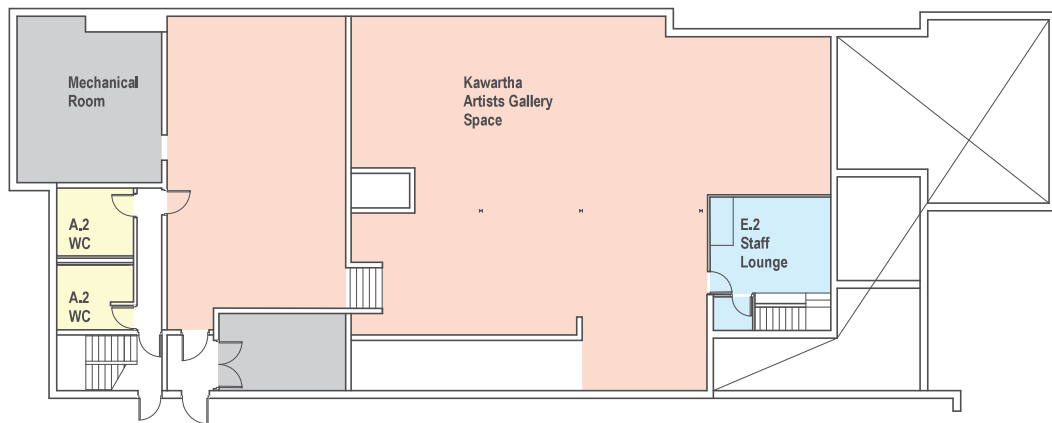
The Branch has only a small number of computers, and public feedback is divided on this issue. Some feel the branch should have an increased number of terminals (although there is only limited space available for this) while others prefer the 'cozy' book centred environment.

In 1985, a technical review found that the building's floor structure did not meet Building Code requirements of 150lb/ft² (7.2 KN/m²). The review recommended modification to the existing floor structure to increase the loading capacity, but the work was never undertaken, and so this would also need to be incorporated in the renovation of the building. As a temporary measure, book storage is currently limited to the perimeter of the building.

Functional Analysis: De La Fosse Branch (Existing)



MAIN LEVEL



LOWER LEVEL

- A: LIBRARY AMENITIES
- B: PUBLIC LIBRARY COLLECTIONS AND ACCESS
- C: COLLECTION PROCESSING
- D: LIBRARY PROGRAM AND PUBLIC MEETING SPACE
- E: ADMINISTRATION AND BUILDING SERVICES
- OTHER ADMINISTRATIVE USES



Existing Spaces De La Fosse Branch

Space Group			Existing Space Used	
	Space Number			
	Space Name		sf	sm
A	Library Amenities		260	24.2
B	Public Library And Collections		2,999	278.7
C	Collection Processing		144	13.4
D	Library Program And Public Meeting Space		500	46.5
E	Administration And Building Services		455	42.3
TOTAL NET AREA - LIBRARY USE			4,358	405.1
	Other Users		3,185	295.9
TOTAL NET AREA - BUILDING			7,543	701.0

Notes:

This space list tabulates the existing net area used in the De La Fosse Branch Building.