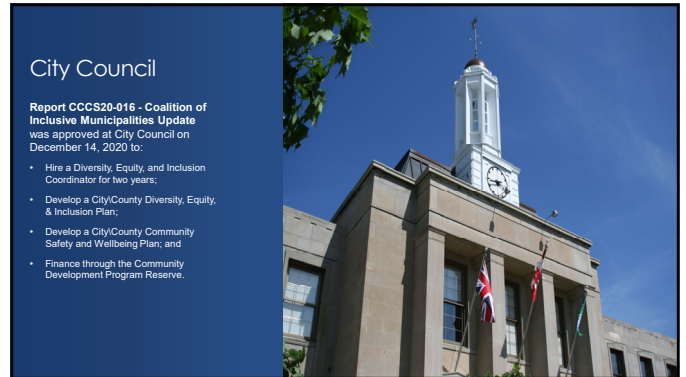
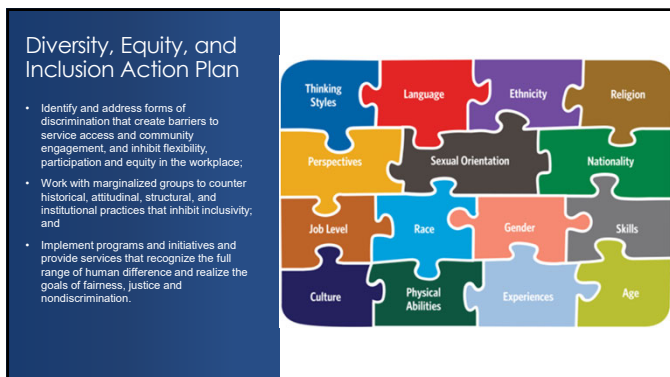




1



2



3



4

### Potential Benefits of a DEI Action Plan

- Improved organizational performance
- Strengthened social cohesion and social capital
- Increased vibrancy
- Upgraded social and institutional learning
- Expanded access to global and domestic talent pools
- Enhanced innovative competency
- Enhanced economic growth



5

### The Community Safety & Well-being Approach

It is a long-term strategy to make safety and well-being a reality for vulnerable individuals, families, groups, and locations. The Plan will include strategies at four levels of intervention: social development, prevention, risk intervention, and emergency response.



6

**Diversity, Equity, & Inclusion Plan**  
**Community Safety & Wellbeing Plan**

**Chris Kawalec,**  
Community Development Program Manager

**Questions?**




7