



Trent Lands and  
Nature Areas Plan

# Trent Lands and Nature Areas Plan

## Symons Campus

City of Peterborough

December 1, 2020

CAMPUS, COMMUNITY, INDIGENOUS IDEAS AND INPUT



### **PHASE 1 Understanding the Land**

Indigenous Traditional Knowledge  
Four Season Environmental Studies  
Campus Archaeology Plan

### **PHASE 2 Campus Vision**

Enrich campus life and enhance public spaces  
Foster campus-community connections  
Meet campus and community needs  
Discuss approaches to land use planning and greening the campus

### **PLAN REVIEW**

Framework integrating the Phase 1 and Phase 2 results  
Creating a sustainable and inspiring campus community  
Environmentally sensitive ways to advance vital campus and community projects  
Update and alignment with Nature Areas Stewardship Plan

**HAPPENING NOW!**

### **FINAL TRENT LANDS AND NATURE AREAS PLAN**

**FINAL TLNAP**

# Existing Needs and Considerations

## Trent Symons Campus

- 27% increase in student population over the past 5 years (as of 2019-2020)
- Academic spaces and on-campus housing at capacity
- Pedestrian/Cyclist safety and traffic congestion concerns on campus roads
- Third largest employer in Peterborough
- Need for student experiential learning and employment

### Projects underway:

- Cleantech Commons
- Indigenous Spaces
- New College and Expansion of Existing College

## City of Peterborough

- Fastest growing metropolitan area in Canada
- Greatest proportion of people living and working within the same City
- Highway 407 open to Highway 35/115
- Lack of affordable, rental, student housing, long-term care facilities
- High unemployment rate, according to Statistics Canada data released for October
- Climate change emergency declared

### Ongoing City studies:

- Official Plan Review
- Update to Housing and Homelessness Plan
- Review of parks and urban forest canopy
- Watershed planning study
- The North End - Trent University Area Transportation and Wastewater Management Class Environment Assessment

## Provincial

- \$4.76 M investment in transit projects in the City and County by the Provincial government, announced in August 2019
- Planning targets in the Growth Plan
- SAR and conservation efforts from the Ministry of Natural Resources and Forestry
- A possible highway bypass currently being studied by the Ministry of Transportation Ontario.

## National

- Improvements or full replacements of locks and dams along the Trent Severn Waterway National Historic Site
- Canada Biodiversity Goals
- National Housing Strategy

## Vision

The Trent Symons Campus Lands are a precious asset, rich in natural and cultural heritage, vital to the resilience of Trent and our communities. Our vision is to create an inspiring, sustainable, and complete community to learn, live, innovate, and be active.

**In our care for and use of the land, Trent will demonstrate leadership in environmental education and stewardship, respect for Indigenous Traditional Knowledge, and thoughtful integration of the natural and built environment.**

## Guiding Principles



LEARNING & DISCOVERY



ENVIRONMENTAL RESILIENCE & INTEGRITY



ECONOMIC RESILIENCE, LEADERSHIP & INNOVATION



SOCIAL RESILIENCE, INCLUSIVITY & COMMUNITY

# Importance of the Plan

## The Trent Lands and Nature Areas Plan (TLNAP 2020) helps to...

TRENT LANDS  
AND NATURE  
AREAS PLAN  
*2020 DRAFT*

### Guide future Trent direction...

- to make informed decisions to ensure the campus is engaging, resilient and meets multiple needs;
- to protect and enhance the natural environment through a systems-based approach; and
- to set expectations for sustainable development.

### Guide municipal plans and initiatives by...

- providing the City, County and adjacent municipalities with input to their long range planning processes.

### Articulate a clear vision to attract prospective faculty and students and attract investment...

- from donors, government and others to implement the plan.

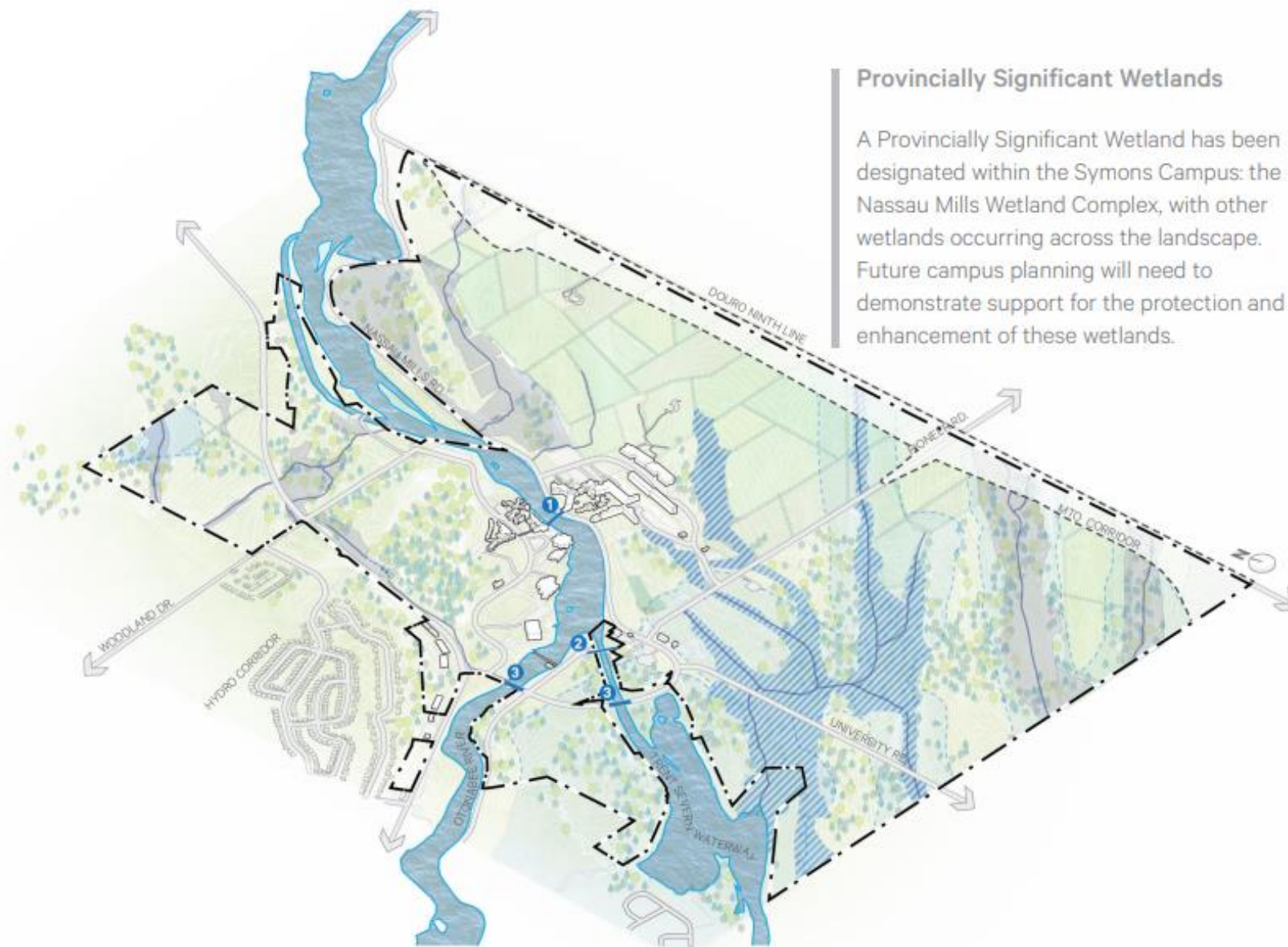


# The TLNAP is a critical first step in the campus planning process

A holistic and integrated approach to planning is a thoughtful first step to understanding the complexities, opportunities and uniqueness of our urban and natural environments.



# Otonabee River



## LEGEND

--- Trent University Boundary

### Otonabee River & Hydrological System

- Otonabee River
- Provincially Significant Wetlands
- Unevaluated Wetlands
- Watercourses
- ORCA Drinking Water Intake Protection Zones

### Existing Bridges

- 1 Faryon Bridge
- 2 Rotary Greenway Trail Bridge
- 3 Nassau Mills Road Bridges



Trent Lands and  
Nature Areas Plan



NBISIING  
CONSULTING INC

north-south  
ENVIRONMENTAL

SvN



# University Green Network

## Major Opportunities

- Enhancement and restoration (e.g., the corridor meadow).
- Innovative integration of biodiversity within urban spaces (e.g., pocket forests).
- Access to diverse green spaces (e.g., manicured quads, sport facilities).

The UGN is a conceptual system intended to demonstrate Trent's commitment to maintaining 60% of the Symons Campus as Nature Areas and green spaces. It supports a systems-based approach to land planning that incorporates consideration of the natural environment.

## LEGEND

■ ■ ■ ■ Trent University Boundary

### University Green Network (UGN)

- UGN
- Proposed Trent Nature Areas (TNA)
- Trent Experimental Farm (Trent Farm Assets) Relocation
- Cultural Meadow Community
- Safe Wildlife Crossing
- Conceptual Corridors
- Existing Campus Green Spaces





# Nature Areas Stewardship Plan

Trent's vision for the Nature Areas encourage, inspire and demonstrate environmental stewardship, serve as places that preserve our natural heritage, contribute to research and learning, and build life-long appreciation for and relationships with the natural world.



# Nature Areas Stewardship Plan

- **Protect** and where possible, **enhance** important natural heritage features and functions, exemplar landform features and processes through a systems-based approach to management
- Recognize and protect important Indigenous values; **promote Indigenous Traditional Knowledge** sharing, teaching and ceremonies.
- Uphold the role of the Nature Areas in **conserving biodiversity**, providing ecological services in local adaptation to, and mitigation of climate change.
- Encourage use of the Nature Areas for academic research and teaching, enhancing Trent's **academic reputation**.
- Understand and promote the **physical and psychological benefits** and opportunities presented by the Nature Areas.
- Foster understanding of, appreciation and **shared responsibility** for the natural environment.
- Encourage and **enable positive interactions** between the public and the University through shared experience in and stewardship of the Nature Areas.



Trent Lands and  
Nature Areas Plan



NBISIING  
CONSULTING INC

north-south  
ENVIRONMENTAL

SvN

# Targets and Metrics for Taking Action

TARGETS	1. Maintain or increase biodiversity	2. Increase habitat diversity and quality	3. Accessible nature	4. Learning from nature	5. Improve management of dog usW
METRICS	<p>Manage the Nature Areas such that biodiversity is maintained or increased over time.</p> <ul style="list-style-type: none"> <li>Species diversity across a range of groups (plants, birds, insects, herpetofauna, etc.)</li> </ul> <p>ITK considerations for biodiversity reflected throughout implementation</p>	<p>Increase the quality and diversity of habitats represented within the Nature Areas.</p> <ul style="list-style-type: none"> <li>Natural vegetation cover assessment(s) over time showing presence of habitat types.</li> </ul> <p>Indigenous medicinal plants planted throughout the campus landscaping.</p>	<p>Improve access to and knowledge of the Trent Nature Areas.</p> <ul style="list-style-type: none"> <li>Connected trail network from campus and/or transportation nodes and between Nature Areas.</li> <li>Signage at key points.</li> </ul> <p>Signage and panels use Michi Saagiig Anishinaabemowin language.</p>	<p>Increase the use of Nature Areas as a natural classroom and opportunities for research.</p> <ul style="list-style-type: none"> <li>Number of University classes/ courses, external organizations using the Nature Areas.</li> <li>Number of research projects in the Nature Areas.</li> </ul> <p>Involve Elders and Knowledge Keepers into land-based learning opportunities.</p>	<p>Address existing ecological and social concerns associated with dogs in the Nature Areas.</p> <ul style="list-style-type: none"> <li>Location and type of use by dog walkers (on and off leash)</li> <li>Presence of dog feces.</li> </ul>



# Mobility Framework



## LEGEND

### Existing Transit Routes

-  Existing Peterborough Transit
-  Existing GO Transit
-  Existing Selwyn Transit

### Proposed New Roads

-  Proposed New Roads
-  Proposed Removed Roads

### Peterborough Trails and Bikeways

-  Paved Trail
-  Rotary Greenway Trail
-  Planned Cycling Routes (to 2031)
-  Planned Cycling Routes (beyond 2031)

### Parks Canada Trails

-  Planned Trail
-  Informal Trail



# University Districts



## Seniors Village

A Seniors Village addresses the community needs of an aging population and provides teaching, research, and experiential learning opportunities for the Trent Centre for Aging and Society, Nursing, and other programs.





## Cleantech Commons

The vision for Cleantech Commons at Trent University is to become Canada's premier green technology research and innovation site, hosting companies and enterprises in environmentally-focused fields including clean technology, environmental services, advanced material sciences, biotechnology, agri-food, and agri-business, to name a few. Trent University has set aside 85 acres of land for Cleantech Commons, to enable sufficient potential for this long term vision.

Of the six design principles, the Cleantech Commons must be:

- be integrated with Trent's main campus physically, visually and socially; and
- be well-connected to the City, County and Region.





## Peninsula Lands

The Peninsula Lands meet housing needs and amenities to serve the campus and the wider community. The vision is for a mixed-use community that implements leading edge sustainable site and community design techniques and construction approaches that become a living lab of sustainable development practices.

Enriching the natural setting, while creating a world-class sustainable village, the lands are well placed to support independent and University-partnered food production programs, and integrated ecosystem services.



Friday Harbour, Innisfil



Friday Harbour, Innisfil



Corktown Commons Park, Toronto



# Anishinaabeg Nikwaakaawin Wisdom

1. Commitment to ongoing **Collaboration and Reconciliation** with First Nations rights-holders and the broader Indigenous community.
2. **Ceremony and Cultural Protocols** will be accessible and respected across the Trent Lands. Trent is committed to ongoing learning of these cultural ways.
3. Exploring new and adequate locations and opportunities for **Traditional and Ceremonial Lands** in collaboration with Indigenous peoples.
4. **Indigenous Traditional Knowledge** will be considered in land-use planning and decision-making with regard to the Trent Lands.
5. **Environmental Collaboration** with Indigenous peoples ensuring the health and vitality of the natural environment, specifically wetlands, and other areas of environmental and cultural heritage.

# Framework Plan



## LEGEND

- Existing Buildings
- Proposed University Green Network
- Pending Further Assessment
- Campus Core
- Non-Specified Cultural Areas
- Conceptual Corridors
- Safe Wildlife Crossing
- Primary Gateway
- Proposed Secondary Gateway
- City of Peterborough Trails and Bikeways
- Paved Trail
- Rotary Greenway Trail

## NOTES:

- The Framework Plan utilizes high level inputs collected during Phase 1 of the Trent Lands and Nature Areas Plan update. Areas are approximate and are subject to more detailed study and refinement.
- A Campus Master Archaeological Study was undertaken with the participation of Michi Saagiig First Nations monitors. The final report must be consulted for any future developments.
- An Environmental Impact Assessment and site specific study are required for all future development.

# Next Steps

---

- 1** Public review and feedback open to January 4th, 2021
- 2** Final revisions to the Trent Lands and Nature Areas Plan
- 3** Approval of the Plan by the Trent Board of Governors on February 5th, 2021
- 4** Implementation Plan developed



**Visit:** [trentu.ca/  
trentlandsplan/  
initiative/plan-  
update](https://trentu.ca/trentlandsplan/initiative/plan-update)



## East Bank Lands

The East Bank Lands present an opportunity to meet campus and community needs for housing, amenities, employment, and long-term revenue generation for the University. Servicing and access limitations will need to be resolved to unlock these lands for opportunities in the long-term.

The district's adjacency to Cleantech Commons will benefit from its proximity to future employment opportunities.

