



Children's Services

- The City of Peterborough is the designated Consolidated Municipal Service Manager (CMSM) for the delivery of Child Care and Early Years.
- Mandated Services the City Administers:
 - Child Care Fee Subsidy program
 - Special Needs Resourcing
 - Wage and Operating grants
 - EarlyON Child and Family Centres
 - Develop local child care and early years service plans to support the provision of high quality services that meet community needs.
- Non – Mandated Services the City Administers:
 - Directly operates four local child care programs





Provincial Child Care Funding in 2019

Year	General Allocation	Expansion Plan	Base Funding for LHCC	Early Learning and Child Care	Fee Stabilization (Jan - Mar)	Wage Enhancement	Wage Enhancement Admin	2019 Total Funding
2019	8,318,638	2,179,542	420,900	792,960	100,750	1,617,246	70,933	13,500,969





Provincial Child Care Funding in 2020

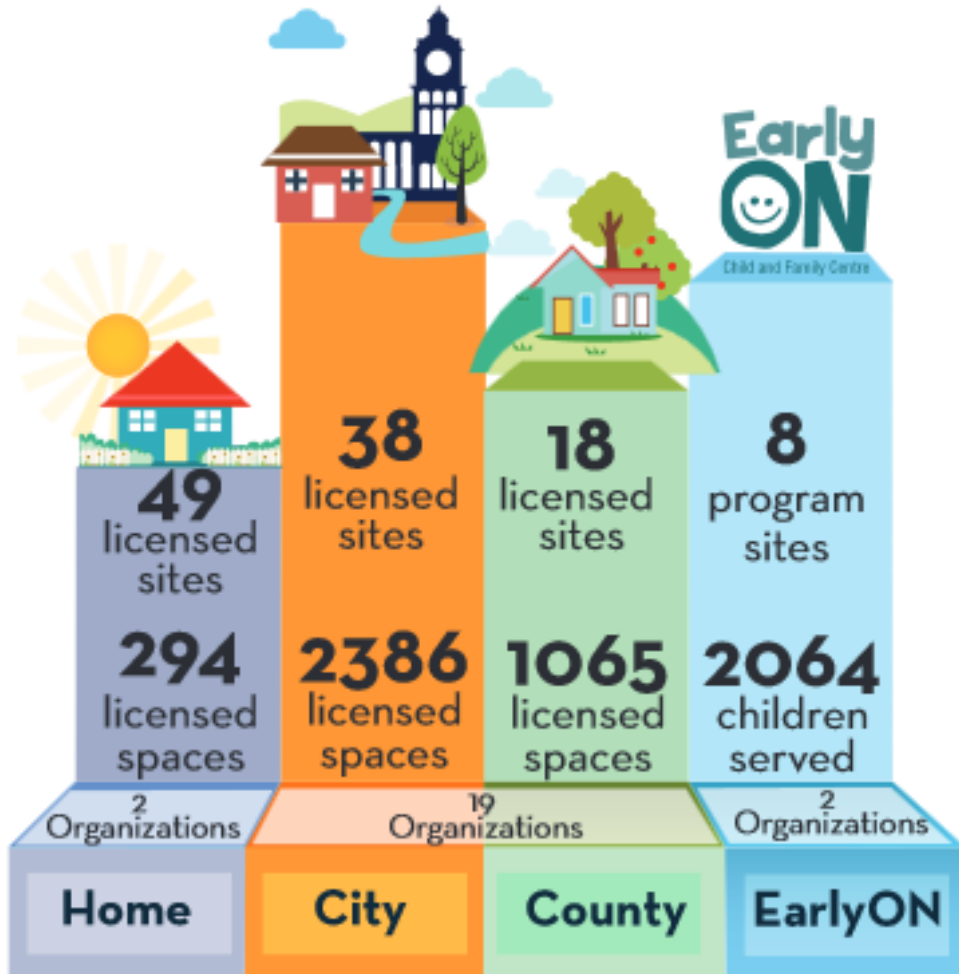
Year	General Allocation	Expansion Plan	Base Funding for LHCC	Early Learning and Child Care	Fee Stabilization (Jan - Mar)	Wage Enhancement	Wage Enhancement Admin	2019 Total Funding
2019	8,318,638	1,743,633	420,900	792,960	0	1,617,246	70,933	12,964,310

- Expansion Plan Funding reduced by \$435,909 in 2020
- Fee Stabilization Program ended in Mar 2019

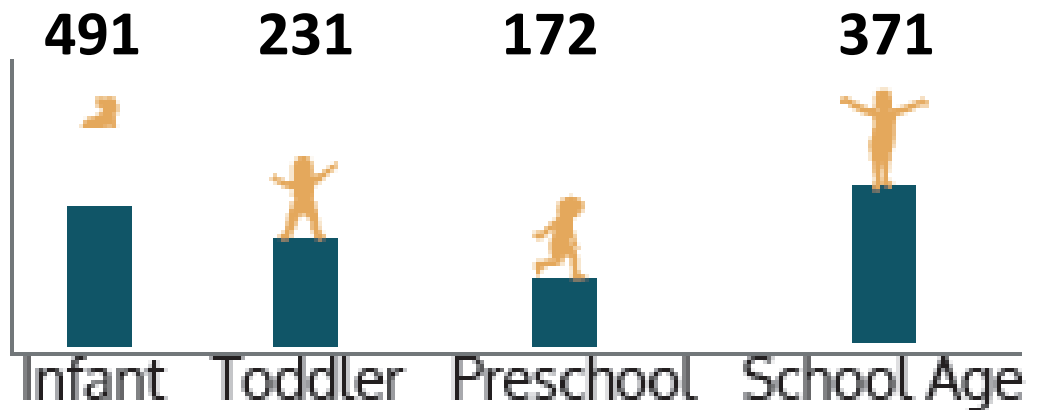




Existing and Growing Need



Current Waitlist for Licensed Child Care



Current Waitlist 1204

Total Licensed Capacity 3745

Child Care Expansion Plan, 2017 - 2021

Agency Name	Completion Status	# of FD Spaces Pre Expansion*	# of Expanded FD Spaces	Total # FD* Spaces Post Expansion
Col 1	Col 2	Col 3	Col 4	Col 5
City Expansion Sites				
Centre Educatif Les Petits Curieux	2017	26	13	39
Municipal – Pearson	2017	26	13	39
Strath – Crestwood	Sep-19	0	25	25
Compass – Mc Rae**	2020	0	49	49
Trent Child Care – King George***	2020	31	18	49
Total City		83	118	201
County Expansion Sites				
Compass – Millbrook	2017	0	49	49
YMCA – Lakefield Child Care	2017	27	22	49
Trent – Bridgenorth	Apr-19	32	15	47
Hucklebug – Havelock	Sep-19	26	13	39
Hucklebug – Norwood	2020 Deferred	0	39	39
Total County		85	138	223
Total All Commitments		168	256	424





Expansion Plan Funding

Expansion Plan Funding for Licensed Child Care Operators supports:

- Fee subsidies
- Special Needs Resourcing Supports
- Operating grants
- Capacity building supports
- One-time start-up equipping expenses (toys, furnishings, equipment)





Questions?

