



Peterborough Watershed Plan

Project Initiation

General Committee

June 3, 2019



What is Watershed Planning?

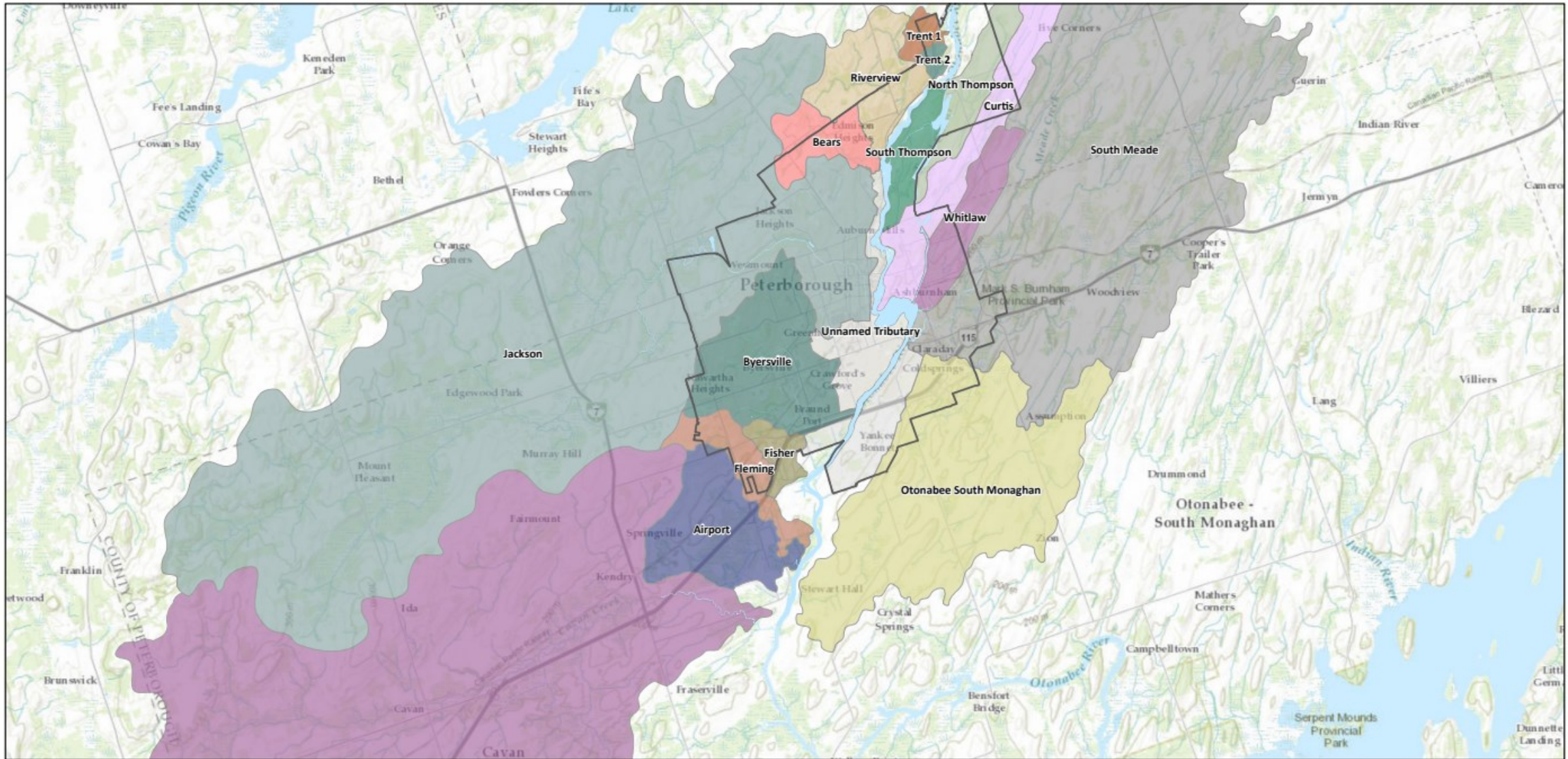
"Planning that provides a framework for establishing goals, objectives, and direction for the protection of water resources, the management of human activities, land, water, aquatic life, and resources within a watershed and for the assessment of cumulative, cross-jurisdictional, and cross-watershed impacts."

Growth Plan, 2017

What is the Water Resource System?

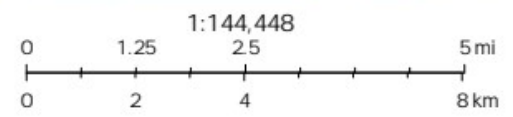
"A system consisting of ground water features and areas and surface water features (including shoreline areas), and hydrologic functions, which provide the water resources necessary to sustain healthy aquatic and terrestrial ecosystems and human water consumption. The water resource system will comprise key hydrologic features and key hydrologic areas."

PPS, 2014



2019-05-10, 1:51:30 p.m.

- | | | | | |
|-------------------------|------------|----------------|-------------------------|-------------------|
| Peterborough City Limit | Bears | Fisher | Otonabee South Monaghan | Trent 1 |
| Hydrography Area | Byersville | Fleming | Riverview | Trent 2 |
| Watershed | Cavan | Jackson | South Meade | Whitlaw |
| Airport | Curtis | North Thompson | South Thompson | Unnamed Tributary |



Sources: Esri, HERE, Garmin, Intermap, increment P Corp., GEBCO, USGS, FAO, NPS, NRCAN, GeoBase, IGN, Kadaster NL, Ordnance Survey, Esri Japan, METI, Esri China (Hong Kong), (c) OpenStreetMap contributors, and the GIS User Community

How will a watershed plan impact our community?

- Create a vision, with a set of goals, objectives and direction or targets;
- Identify areas to be protected, enhanced and rehabilitated;
- Create or revise land-use and infrastructure policy
- Create development and infrastructure guidelines;
- Detail the requirements for ongoing monitoring and verification of defined targets;
and
- Create relationships to further the local stewardship, education and outreach initiatives

What is the watershed planning process?

Phase 1(a) - Watershed characterization and direction

Phase 1(b) - Draft the vision, goals, and objectives

Phase 2 - Watershed planning elements and study components

- Water quantity and water budget
- Water quality
- Natural hazards
- Climate change
- Natural heritage
- Cumulative effects
- Land-use and management

Phase 3 – Plan development and implementation

The Watershed Plan

Primary Plan Components:

- Key Next Steps
- Future Studies
- Policy, By-law and Design Standards
- Facilitator and Contributors
- Mechanisms for Implementation
- Development Requirements
- Cost
- Funding
- Timeframe
- Integration
- Prioritization
- Asset Management
- Operation and Maintenance
- Monitoring and Verification Requirements
- Recommendations

Climate Change Adaptation

- Climate change and the impacts of severe weather events will be a priority consideration in all aspects of the watershed planning process.
- The protection and enhancement of our water resource system is vital to our regions ability to adapt to a changing climate.
- A key component of the study will be the assessment and development of infrastructure design guidelines that incorporate climate change using a risk based framework.
- Future climate scenario modeling will also be conducted to assess the impacts on the groundwater system.

Collaboration, engagement and communication

1. To provide key stakeholders, community organizations and the public with the opportunity to provide input and feedback to inform the Watershed Plan; and
2. To raise awareness regarding the development of the plan and the importance of watershed planning in general.

Watershed Advisory Committee (WAC)

- The Watershed Advisory Committee serves as an avenue for collaboration on the development of a Watershed Plan.
- Comprised of planning authorities, the conservation authority and local First Nations within the subject watershed.
- The WAC has a consultative role and serves as a means to better facilitate information sharing, input and dialogue.

Technical Advisory Committee (TAC)

- The Technical Advisory Committee serves as an opportunity to solicit direct feedback from local experts and ensure local research and knowledge is integrated into the Watershed Plan.
- Comprised of representatives having technical expertise in water quality, hydrology and hydraulics, infrastructure, natural heritage, climate change, or other relevant disciplines.
- Up to 10 members will be selected for the committee from a range of disciplines.

Working Groups, Pop-ups and Online Engagement

- Project "Kick-off" event June 19, 2019 from 4pm to 8pm;
- Two stakeholder workshops in the fall of 2019 and winter 2020;
- Project team will attend multiple community events in the summer of 2019 and 2020 (Pop-up engagement);
- Interactive community workshop in the winter of 2020 to present draft Watershed Plan;
- Significant online presence, including website material and use of social media to interact with those unable to attend in-person events.

Indigenous Consultation and Engagement

- Local Treaty 20 First Nations included on WAC as an opportunity for early and meaningful engagement, and to create a close partnership for a more comprehensive watershed plan.
- Individual First Nations and Métis consultation and accommodation standards will guide the consultation framework.
- Incorporating Traditional Ecological Knowledge (TEK) into the watershed plan is important. The inclusion of TEK will be determined through discussions with individual First Nations and Métis at their discretion.



OUR WATERSHED
OUR BLUEPRINT





Live
outside
the
ordinary.

