

Proposed List of Properties on Heritage Register – Downtown Core



241-249 George Street N

241 George Street N is a good example of a commercial building in Peterborough outside of the main downtown core. At only two storeys, it is smaller than most other commercial buildings on George Street and marks the historic transition from of the street from downtown commercial to residential and industrial uses. It is an important feature in the landscape of George Street.

Heritage attributes: Two-storey brick construction; flat roof; cornice; pilasters; rounded doorways; fenestration; continuation of commercial row.



287-293 George Street N

287-293 George Street N is an excellent example of a late nineteenth century Italianate commercial block in Peterborough. It retains its heavy bracketed cornice across the length of the building and continues the pattern of windows set between pilasters prevalent in downtown commercial buildings. It is unique in the downtown for its use of rusticated pilasters and coursing throughout the upper storeys.

Heritage attributes: Three-storey red brick construction; flat roof; cornice; brackets; pilasters; fenestration; coursing; ground floor storefronts; continuation of commercial row.



290 George Street North – Showplace Performance Centre

290 George Street North was constructed in 1947 as an Odeon movie theatre. Now Showplace Theatre, it is an excellent example of a mid-twentieth century movie theatre and retains its original architectural features on the George Street elevation including the minimalist decorative brickwork.

Heritage attributes: Three-storey red brick construction; buff decorative details; flat roof; theatre entrance; awning and signage; rustication.



310-314 George Street N

310-314 George Street N was completed in 1915 as the storefront and factory for Barrie's Furs. It was designed by Toronto architectural partnership Bond and Smith, of whom the latter partner, Sandford Fleming Smith, was a Peterborough native and the nephew of Sir Sandford Fleming. It is a rare and early example of an Art Deco style building in Peterborough.

Heritage attributes: Four-storey brick construction; terra cotta facade; flat roof; bands of windows; decorative metalwork; decorative terra cotta; central entrance; symmetrical composition.



337 George Street N

337 George Street N is a good example of a late nineteenth century commercial building. Although heavily modified, it retains some of its nineteenth century details, including the decorative brickwork. It is a contributing feature to the historic landscape of George Street North.

Heritage attributes: Two-storey brick construction; flat roof; parapet; dog tooth course; decorative brickwork; fenestration; ground floor storefront; continuation of commercial row.



339-341 George Street N

339-341 George Street N was constructed by David Carlisle, a local contractor who built a number of commercial structures downtown, in 1856, making it one of the oldest buildings along George Street. While both halves of this building have undergone significant renovation since the 1850s, they are, nevertheless, an important historical resource in the city's downtown core.

Heritage attributes: Two-storey brick construction; flat roof; fenestration; ground floor storefront; continuation of commercial row.



343-345 George Street N

343-345 George Street N was constructed between 1858 and 1859 for Elias Burnham and operated as a hotel, first as the Caisse House and then the Grand Central Hotel. In 1860, it was the site of a gala dinner to celebrate the visit of the future King Edward VII to Peterborough. It is an excellent example of mid-century commercial architecture and is notable for the brick corbelling at the head of the recessed panels on the front elevation. It continues the pattern of 347-349 George Street North which was constructed first. It is an important contributing property to the overall landscape of the city's commercial core.

Heritage attributes: Four-storey red brick construction; flat roof; fenestration; pilasters; corbels; rounded top floor windows; ground floor storefronts; continuation of commercial row.



347-349 George Street N

347-349 George Street N was constructed in 1857 for Elias Burnham and is an excellent example of mid-nineteenth century commercial architecture. It is notable for its use of corbelling above recessed panels with square windows on the second storey and rounded windows on the third. It is an important contributing property to the historic landscape of downtown George Street.

Heritage attributes: Three-storey red brick construction; flat roof; fenestration; pilasters; corbels; rounded top floor windows; ground floor storefronts; continuation of commercial row.



362-366 George Street N

362-366 George Street North was constructed in 1865. Owned by George A. Cox, the block is an excellent example of a corner building constructed in the Italianate commercial style during the 1860s. It retains its decorative cornice and brickwork and is an important anchor building in the overall streetscape. It is physically, visually and historically linked to the surrounding properties through their style and date of construction and is an integral part of the downtown commercial landscape a continuation of the three-storey commercial row that defines George Street.

Heritage attributes: Three-storey buff brick construction; flat roof; cornice; brackets; pilasters; corbels; rounded third-storey windows; fenestration; ground floor storefronts; continuation of commercial row.



368 George Street N

368 George Street N was constructed in the late nineteenth century, likely after its neighbour at 362-366 George Street North. It is a unique building in the downtown because of its distinctive design features. Decorative cornices run along both the top of the building and above the storefront and the uniquely designed windows feature highly decorative brick surrounds with coursing running between each storey. It is an important contributing structure to the overall commercial landscape of George Street.

Heritage attributes: Four-storey buff brick construction; flat roof; cornice; brackets; decorative brickwork; founded windows; window hood and moulding; coursing; fenestration; ground floor storefronts; continuation of commercial row.



370-372 George Street N

370-372 George Street N was constructed around 1862, immediately after the 1861 fire. At only two stories, it is one of the smallest buildings on the street, but echoes the building heights of the properties across the street. It is nevertheless well-integrated into the overall streetscape, with similar proportions and stylistic elements as surrounding properties. It is a contributing feature to the historic George Street streetscape.

Heritage attributes: Two-storey red brick construction; buff brick voussoirs; buff brick below cornice line; corbels; pilasters; rounded upper storey windows; fenestration; flat roof; ground floor storefronts; continuation of commercial row.



374-376 George Street N

374-376 George Street N was constructed between 1862 and 1863. It was owned by Margaret Dixon, who also owned a nearly-identical block across the street. It is an excellent and representative example of Italianate commercial architecture and is a contributing structure in the overall landscape of Peterborough's downtown, through its continuation of the row of buildings facing on to George Street constructed in this style.

Heritage attributes: Three-storey buff brick construction; flat roof; cornice; brackets; pilasters; corbels; rounded windows; fenestration; ground floor storefronts; continuation of commercial row.



377 George Street N

377 George Street N was constructed between 1865 and 1866 for Margaret Dixon who also owned the adjoining property at 379 George Street North. Originally constructed as a three storey building, the third storey has been removed and the façade renovated. Nevertheless, the building remains an important contributing structure to the landscape of George Street through the continuation of its compact commercial frontage.

Heritage attributes: Two-storey buff brick construction; red brick decorative details; fenestration; flat roof; ground floor storefront; continuation of commercial row.



378-380 George Street N

378-380 George Street N was constructed in 1863 for William Hall and Robert Nicholls. It was occupied by a grocery store well into the twentieth century. It is a good and representative example of 1860s Italianate commercial architecture and is a continuation of the three-story block of commercial buildings along George Street. It is a contributing property to the overall landscape of Peterborough's downtown core.

Heritage attributes: Three-storey buff brick construction; flat roof; cornice; brackets; pilasters; corbels; window surrounds; rounded upper storey windows; fenestration; ground floor storefronts; continuation of commercial row.



382 George Street N

382 George Street N was constructed in 1862 and is a good example of Italianate commercial architecture constructed in the early 1860s. Although it no longer retains its cornice, it retains the decorative brickwork below the cornice line. It is the longstanding location of Faye's Bridal which operated in the building from 1956 to 1982 and has important connections to the city's Jewish business community through its owner, Faye Morris. It is a contributing structure to the commercial landscape of the downtown core and is a continuation of the commercial frontage along George Street.

Heritage attributes: Three-storey buff brick construction; flat roof; cornice; brackets; pilasters; corbels; rounded upper storey windows; fenestration; ground floor storefronts; continuation of commercial row.



384-388 George Street N

384-388 George Street North was constructed in 1862 and is a good example of early 1860s Italianate commercial architecture. It continues the pattern of upper storey windows set between brick pilasters that can be seen along George Street and is a contributing property to the historic character of the downtown.

Heritage attributes: Three-storey red brick construction; flat roof; cornice; brackets; pilasters; corbels; rounded windows; voussoirs; fenestration; ground floor storefronts; continuation of commercial row.



390-392 George Street N

390-392 George Street N was constructed in 1862 for William Cluxton and James Stevenson and housed George Croon's Saloon. It is a good example of 1860s Italianate architecture and possesses well-preserved hood moulds on the upper storey windows of 392, which were added in the 1880s with changing trends in downtown architectural styles. It is a contributing property to the heritage character of Peterborough's downtown core.

Heritage attributes: Three-storey brick construction; flat roof; cornice; brackets; pilasters; rounded upper storey windows; window hoods; fenestration; ground floor storefronts; continuation of commercial row.



394 George Street N

394 George Street N was constructed in 1862 for William Cluxton. It is a good example of 1860s Italianate commercial architecture and it, like its neighbour at 392 George Street N, retains highly decorative hood moulds on its upper storey windows. These were likely added in the 1880s when decorative window treatments such as this became increasingly popular. It is a contributing heritage resource in the city's downtown.

Heritage attributes: Three-storey brick construction; flat roof; cornice; brackets; pilasters;; window hoods; fenestration; ground floor storefronts; continuation of commercial row.



418-420 George Street N

418-420 George Street N was constructed in 1862 and is a good example of early 1860s Italianate commercial architecture. It continues the pattern established along George Street of upper storey windows set between pilasters and forms part of a continuous row of historic commercial buildings. It has distinctive raised brick voussoirs around its third story windows. It is a contributing heritage property to the overall commercial landscape of downtown Peterborough.

Heritage attributes: Three-storey red brick construction; buff brick voussoirs; buff brick pilasters; flat roof; cornice; corbels; fenestration; ground floor storefront; continuation of commercial row.



421-423 George Street N

421-423 George Street N may have been erected in the 1840s, but was certainly in place by the early 1850s when it housed a saloon and a dry goods store. Its basic design places it within this period, making it the oldest commercial building on George Street. It is an important historical resource that helps define the downtown's character as a whole and is also an important surviving structure that predates the 1861 fire.

Heritage attributes: Three-storey red brick construction; flat roof; fenestration; ground floor storefront; continuation of commercial row.



422-424 George Street N

422-424 George Street N was likely constructed around 1862 and is likely a continuation of the same building as they both share specific design features including their decorative brickwork, pattern of windows between pilasters and distinctive raised voussoirs on the third storey windows. It is a good example of 1860s Italianate architecture and contributes to the historic character of the downtown.

Heritage attributes: Three-storey brick construction; flat roof; cornice; brackets; pilasters; corbels; rounded upper storey windows; fenestration; ground floor storefront; continuation of commercial row.



426-430 George Street N

426-430 George Street N was constructed around 1870 as a commercial block that also included 432 George Street N, a designated property. This row of commercial buildings is constructed in the Italianate style and originally possessed good examples of decorative brickwork which are retained on the out two units. It is a contributing structure in the overall landscape of George Street.

Heritage attributes: Three-storey brick construction; flat roof; decorative brickwork; corbels; dog tooth course; fenestration; ground floor storefront; continuation of commercial row.



441-445 George Street N

441-445 George Street N was constructed in 1868 for the Rev. Mark Burnham. It is a good example of a smaller corner building from the mid-nineteenth century and retains its rounded upper storey windows set between pilasters with decorative brickwork. It is an important anchor building at the corner of Brock and George Streets and contributes to the historic character of the city's downtown.

Heritage attributes: Two-storey buff brick construction; pilasters; corbels; flat roof; ground floor storefront; continuation of commercial row.



450 George Street N

450 George Street N was constructed in 1882 for George A. Cox and James Stevenson as an addition to 442-448 George Street North, the Morrow Building. Constructed in the Second Empire style, but without the characteristic mansard roof, it was designed by John Belcher, who also designed the Morrow Building, and possesses many of the same architectural features. It is an excellent example of 1880s commercial architecture and is an integral part of the urban, commercial landscape of the city's historic downtown.

Heritage attributes: Two-store buff brick construction; flat roof; cornice; brackets; pilasters; corbels; fenestration; window hoods; ground floor storefront; continuation of commercial row; relationship to the Morrow Building.



459 George Street N

459 George Street N was constructed around 1898 as the Bethany Tabernacle, a Christian and Missionary Alliance church under the leadership of the Rev. Reuben Zimmerman. It served in this capacity until 1950 when the congregation moved to Park Street Gospel Hall and the building became home to the Church of the Open Bible until 2009. Although it has undergone some modern renovations, the building remains a good example of late nineteenth century Christian evangelical architecture and retains its decorative brickwork on the front gable.

Heritage attributes: Red brick construction; gable roof; fenestration; decorative brickwork.



548 George Street N

548 George Street N was constructed around 1910 and is an excellent example of an Edwardian Classical front-gable residential structure. It retains its original details and massing including fish-scale shingles in the gable end, an upper-storey, canted bay window and front verandah with characteristic bowling pin columns. It is an important contributing property to the landscape of George Street north of City Hall as the area transitions from a commercial to a residential character.

Heritage attributes: Two-storey red brick construction; gable roof; dormer; gables with shingles; central window with moulding; bay window; fenestration; entrance with transom; verandah; pediment; bowling pin columns; piers.



298 Water Street – Peterborough Canoe Company Administration Building

298 Water Street was constructed around 1892 and served as the administration building for the Peterborough Canoe Company's Water Street site. It is the only remaining part of the factory and one of the few surviving buildings associated with the canoe building industry in Peterborough. It is an important example of industrial architecture in the city and has important historical connections to the city's canoe manufacturing history.

Heritage attributes: Two-storey red brick construction; flat roof; cornice; voussoirs; fenestration; central entrance.



372-374 Water Street

372-374 Water Street is a good example of a Victorian commercial building constructed around 1860. It is notable for its decorative brickwork in the coursing between the two storeys, the corbelling at the roofline, and window surrounds with keystones. It is an important part of the historic commercial fabric of Water Street and is physically and historically linked to the surrounding properties.

Heritage attributes: Two-storey red brick construction; flat roof; corbels; decorative brickwork; fenestration; coursing; ground floor storefronts; continuation of commercial row.



382-386 Water Street

382-386 Water Street is a good example of a late nineteenth-century commercial building in Peterborough. Constructed prior to 1876, it is a two-storey brick building that retains its cornice. It is a contributing property to the historic commercial landscape of this section of Water Street.

Heritage attributes: Two-storey brick construction; flat roof; cornice; fenestration; ground floor storefronts; continuation of commercial row.



388 Water Street

388 Water Street is a unique commercial building in downtown Peterborough. It was constructed around 1880 for John Hall and features significant amounts of decorative brickwork and a high bracketed cornice set on pilasters. It is an important and landmark structure in the commercial landscape of Water Street and is both physically and historically linked to its surroundings.

Heritage attributes: Three-storey brick construction; flat roof; cornice; brackets; pilasters; corbels; decorative brickwork; fenestration; ground floor storefronts; continuation of commercial row.



402-414 Water Street

402-414 Water Street was constructed between 1863 and 1864 and owned by the Hon. Sydney Smith. Between 1865 and 1875, it housed the Commercial Bank and the Canadian Bank of Commerce before it was turned into the Smith House Hotel in 1875. It remained hotel until 1910, although it went under a number of different names. It is an important historic building on the Water Street commercial corridor.

Heritage attributes: Three-storey brick construction; flat roof; cornice; oriel windows; ground floor entrance; carriage way.



451 Water Street

451 Water Street was constructed as a rental property for George A. Cox and James Stevenson in the mid-1880s. It is a good example of a semi-detached property with symmetrical projecting bays.

Heritage attributes: Two-storey brick construction; stone foundation; hipped roof; projecting bays; wide eaves; fenestration; central entrances; symmetrical massing.



457 Water Street

457 Water Street was constructed in 1883 for Dr. James Halliday, an important and well-regarded local surgeon. It was designed by the Toronto architectural firm, Gordon and Helliwell, which also designed St. Andrew's Presbyterian, now United, Church in 1885 and did a major redesign of St. Paul's Presbyterian Church in 1883. It is an excellent example of an ornate bay and gable residence and displays a high degree of craftsmanship in its decorative brickwork.

Heritage attributes: Two-and-a-half-storey buff brick construction; projecting bay; gable; hipped roof; timber work in gable; decorative brickwork; coursing; fenestration; dormer; chimney; foundation; entrance porch; asymmetrical massing.



467-469 Water Street

467-469 Water Street was constructed in the early 1890s and is a good example of a bay and gable semi-detached residence, a relatively uncommon building type in Peterborough. It displays a number of key features of this housing type including the two storey bays with gables and brackets and symmetrical front elevation. Over the years, the two units were home to various prominent members of the Peterborough community, including auctioneer Charles Stapleton and MP and lawyer Richard Hall.

Heritage attributes: Two-storey brick construction; hipped roof; symmetrical projecting bays; gables; brackets; dormer; central entrances; fenestration; rounded central windows; foundation; symmetrical massing.



479 Water Street

479 Water Street was likely constructed in the late 1880s and is a good example of a late nineteenth century estate house that took its design cues from Classical precedent. These include the hipped roof and the verandah with square columns and entablature. This property is a contributing feature to the row of large houses along this section of Water Street.

Heritage attributes: Two-storey brick construction; hipped roof; projecting bay; chimneys; dormer; fenestration; lintels; entrance porch; square columns; foundation; asymmetrical massing.



526 Water Street

526 Water Street was constructed between 1864 and 1866. It is an important example of an early estate house in the downtown core and is notable for its verandah which stretches across the full front of the house and is supported by Doric columns.

Heritage attributes: Two-storey brick construction; hipped roof; verandah; columns; central entrance with transom and sidelights; entablature; railing, foundation; fenestration.



540 Water Street

540 Water Street was constructed around 1912 as the rectory for St. Paul's Presbyterian Church. It is a good example of Edwardian Classical design and includes an entrance porch with pediment, front bay and gable and a hipped roof. It retains its important relationship with the church and is an important element in the surrounding streetscape.

Heritage attributes: Two-storey red brick construction; hipped roof; projecting bay; gable; lug sills; lintels; fenestration; stone foundation; entrance porch; pediment; square columns; brick piers; asymmetrical massing.



541 Water Street

541 Water Street was constructed around 1899 as the rectory for George Street Methodist Church, now Emmanuel United Church. It is a good example of a late nineteenth century residence and includes several interesting features including the oriel window on the south elevation. It retains its important relationship with the church and is an important element in the surrounding streetscape.

Heritage attributes: Two-storey red brick construction; hipped roof; gables; chimney; oriel window; lintels; asymmetrical massing; fenestration; rusticated foundation.



542 Water Street

542 Water Street was constructed in 1886 for Henry Sherwood and is a good example of a semi-detached house constructed in the Second Empire style. It is an important feature in defining the historic character of the northern section of Water Street as it transitions from a commercial to a residential area.

Heritage attributes: Two-and-a-half-storey buff brick construction; mansard roof; dormer windows with window hoods; projecting bays; central entrances; symmetrical massing; two-storey entrance porch; fenestration.



543 Water Street

543 Water Street appears on Sandford Fleming's 1846 map at the location of Emmanuel United Church and was occupied by William Cluxton. It appears to have been moved to this location in the early 1870s. It is a good example of a five-bay Georgian style residence in Peterborough and is an important early structure.

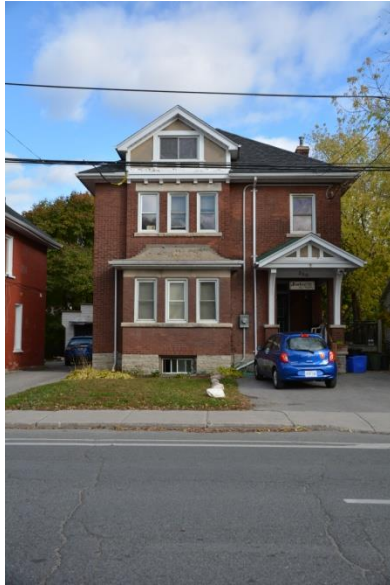
Heritage attributes: Two-storey construction; hipped roof; symmetrical massing; central entrance with transom and sidelights; fenestration; porch; pediment.



546 Water Street

546 Water Street was constructed in 1907 for James Shook, general manager of the Dickson Lumber Company. It is a good example of an Edwardian Classical estate house. Notably features include the hipped roof with central dormer, two-storey bay, and entrance porch with paired classical columns. It contributes to the historic character of the streetscape which is comprised of a number of large houses of this type.

Heritage attributes: Two-storey red brick construction; hipped roof; central dormer; chimney; projecting bay; lug sills; fenestration; two-storey entrance porch; columns; entablature; brick knee walls.



550 Water Street

550 Water Street was constructed in the mid-1890s and is a good example of late nineteenth century residential design. It includes a number of interesting and unique design features including its projecting gable, bay window with awning roof, entrance porch with a half-timbered pediment. It contributes to the historic character of the streetscape which is comprised of a number of large houses of this type.

Heritage attributes: Two-storey red brick construction; hipped roof; projecting bay and gable; corbels; lintels; lug sills; fenestration; awning roof; offset entrance; entrance porch; pediment; half-timbering; brackets; brick piers; stone foundation.



555 Water Street

555 Water Street was constructed around 1906 for Samuel Oke, one of the owners of S.A. and W.J. Oke grocers. It is a good example of an Edwardian front gable house and retains its shingled front gable and offset entrance. It contributes to the historic residential character of this section of Water Street.

Heritage attributes: Two-and-a-half storey brick construction; hipped roof; gable; shingles; central window; offset entrance with transom; stone foundation; fenestration.



557-559 Water Street

557-559 Water Street was constructed around 1903 and is a good example of an early twentieth century estate house. It features a number of design features popular in these types of houses during the period includes a hipped roof, asymmetrical massing, two-storey bays and decorative brickwork. It contributes to the historic character of the streetscape which is comprised of a number of large houses of this type.

Heritage attributes: Two-storey red brick construction; hipped roof; asymmetrical massing; dormers; bays; gables; decorative brickwork; foundation; fenestration.



558 Water Street

558 Water Street was constructed around 1897 and is a good example of a late Victorian house beginning to integrate elements of the Edwardian Classical gable front house into its design. These include the shingled gable with central window and verandah supported by columns. However, it also includes rounded second storey windows which are more typical of Victorian gable front vernacular homes from this period.

Heritage attributes: Two-and-a-half storey red brick construction; front gable; shingles; central window; rounded second-storey windows; porch; columns; offset entrance; fenestration.



560 Water Street

560 Water Street was constructed in the late 1870s. It is a good example of mid-Victorian vernacular residential design. However, it is particularly notable because, unlike most gable fronted houses of this type and age, it is divided into three bays as opposed to the more typical two.

Heritage attributes: One-and-a-half-storey red brick construction; gable roof; rounded upper storey windows; fenestration; offset entrance.



406 Sheridan Street (70 Hunter Street W)

406 Sheridan Street was constructed between 1870 and 1875 and is a good example of a centre hall planned house in Peterborough. It retains many important original architectural features including structural polychromy in the quoins and voussoirs, a rear, two-story projecting bay, paired chimneys on the north elevation and a hipped roof. It is a portion of the former Walter Sheridan estate.

Heritage attributes: Two-storey red brick construction; hipped roof; chimneys; symmetrical massing of main building; one-storey addition with gable roof; buff brick quoins; buff brick voussoirs; two-storey verandah; square columns; fenestration.



424 Sheridan Street

424 Sheridan Street was constructed in the mid-1880s and is a good example of a late Victorian vernacular dwelling built for a middle class occupant. Its notable architectural features include its hipped roof and front entrance with transom and sidelights. This was a popular housing type during this period. The property on which it is located is part of the former Walter Sheridan estate.

Heritage attributes: Two-storey red brick construction; hipped roof; rounded upper storey windows; fenestration; verandah; entrance with sidelights and transom.



437 Sheridan Street

437 Sheridan Street was constructed around 1904 as the manse for St. John the Evangelist Anglican Church. It is a good example of a Queen Anne style house with asymmetrical massing and a porch that wraps around the front and side of the house. The house is oriented towards to church property, as opposed to the road, which demonstrates its relationship to the wider landscape of the Anglican Church's downtown presence in Peterborough.

Heritage attributes: Two-storey red brick construction; hipped roof; projecting bays with gables; dormers; chimneys; fenestration; porch; square columns; stone foundation; asymmetrical massing.



438 Sheridan Street

438 Sheridan Street was constructed in 1869 for James Sheridan, who used it as a rental property. Constructed on the former Walter Sheridan estate, it is a good example of a three-bay mid-Victorian house constructed in the Georgian style. It is constructed in buff brick on a symmetrical plan with a hipped roof and central entrance with transom and sidelights.

Heritage attributes: Two-storey buff brick construction; hipped roof; symmetrical massing; central entrance with transom and sidelights; fenestration; shutters.



362 Queen Street

362 Queen Street appears on the 1846 Sandford Fleming map of Peterborough and is reported to be the third brick building erected in the city. An early photograph, dating to 1875, shows this building on the site, without the rear addition. Throughout the mid-nineteenth century it was used as a post office by Samuel Carver. It is an important part of Peterborough's early architectural history.

Heritage attributes: One-and-a-half-storey brick construction; gable roof; central gable with rounded window; chimney; fenestration; central entrance.



371-377 Queen Street

371-377 Queen Street was constructed prior to 1870 out of brick. It is a good example of Victorian terraced housing and an important part of the historic landscape of Queen Street.

Heritage attributes: Two-storey brick construction; gable roof; fenestration; entrances; fire separation walls; chimney.



372 Queen Street

372 Queen Street was constructed prior to 1875 as a frame structure. An early photograph from that year shows the building on the site prior to it being clad in brick and before the addition of the dormer window. It is an important part of the historic landscape of Queen Street.

Heritage attributes: One-and-a-half-storey frame construction; brick cladding; chimneys; gable roof; dormer; central entrance with transom and sidelights; fenestration.



378-380 Queen Street

378-380 Queen Street was constructed in 1883 by local contractor William Fitzgerald and bricklayer John Carlisle for J.J. Lundy, who was mayor of Peterborough between 1879 and 1880. It was constructed as a tenement and rented out. It is a good example of late a Victorian semi-detached house constructed in the Italianate style with broad eaves and large bays on either side of the front elevation.

Heritage attributes: Two-storey red brick construction; hipped roof; projecting bays; central entrances; upper storey porches; voussoirs with keystones; symmetrical composition.



381 Queen Street

381 Queen Street is a one-story frame house constructed prior to 1851. It was occupied by the McDonald family from at least 1851 until 1908. It is an important part of the historic Queen Street landscape and Peterborough's early architectural history.

Heritage attributes: One-storey frame construction; central entrance with transom and sidelights; gable roof; fenestration; symmetrical massing.



390 Queen Street

390 Queen Street is a good example of a Queen Anne Style residence executed in brick. It was constructed around 1905 and features iron cresting on the roof, decorative brackets and brick pilasters on the front gable bay.

Heritage attributes: Two-storey red brick construction; hipped roof; iron cresting; rounded windows; pilasters; dog-tooth coursing; projecting bay with gable; brackets; entrance porch; pediment; square columns; brick piers; fenestration.



496 College Street

496 College Street was likely constructed in the late 1850s. It has features that were typically used during this period in vernacular construction including the return eaves. It is a good example of vernacular residential design employing Classical Revival details and an important part of historic College Street.

Heritage attributes: One-and-a-half-storey construction; gable roof; return eaves; offset entrance with porch; fenestration.



500 College Street

500 College Street was likely constructed during the 1860s. It is a good example of vernacular residential design and features a number of design elements that were popular in the mid-nineteenth century including the wide verandah which spans the front of the one-and-a-half storey house. It is an important part of historic College Street.

Heritage attributes: One-and-a-half-storey construction; gable roof; offset entrance; verandah; fenestration.



504 College Street

504 College Street was constructed around 1880 and is a good example of a vernacular Victorian residential building with two bays and a hipped roof. It retains a one storey bay window on the south elevation, wide eaves and a string course which may, at one time, have supported a one storey-verandah on the front of the house. It is an important part of historic College Street.

Heritage attributes: Two-storey red brick construction; hipped roof; rounded upper storey windows; buff brick voussoirs; string course; central entrance with sidelights and transom; two-storey porch; chimney; bay window.



508 College Street

508 College Street was constructed around 1896 and is a good example of a Queen Anne residential building constructed in brick. It features a brick pilasters and detailing and decorative wooden brackets and is the matching property to its neighbour at 510 College Street. It is an important part of historic College Street.

Heritage attributes: Two-storey buff brick construction; hipped roof; chimney; projecting bay; gable; brackets; pilasters; corbels; decorative brickwork; windows with transoms; voussoirs; entrance with transom; two-storey porch; fenestration.



510 College Street

510 College Street was constructed around 1896 and is a good example of a Queen Anne residential building constructed in brick. It features a brick pilasters and detailing and decorative wooden brackets and is the matching property to its neighbour at 508 College Street. It is an important part of historic College Street.

Heritage attributes: Two-storey buff brick construction; hipped roof; chimney; projecting bay; gable; brackets; pilasters; corbels; decorative brickwork; windows with transoms; voussoirs; entrance with transom; two-storey porch; fenestration.



81 London Street

81 London Street was constructed around 1888 as a rental property for Thomas McKee. It is a good example of late nineteenth century vernacular housing and reflects the demographic of the Dickson Mills neighbourhood in which it was located as it was rented out to working class people. It is a contributing structure to the overall character of the historic neighbourhood.

Heritage attributes: One-and-a-half storey construction; gable roof; fenestration; offset entrance with porch; bay window.



83 London Street

83 London Street was constructed around 1888 as a rental property for Thomas McKee. It is a good example of late nineteenth century vernacular housing and reflects the demographic of the Dickson Mills neighbourhood in which it was located as it was rented out to working class people. It is a contributing structure to the overall character of the historic neighbourhood.

Heritage attributes: One-and-a-half storey construction; gable roof; fenestration; offset entrance with porch; bay window.



84 London Street

84 London Street was constructed around 1915 and is an example of a Queen Anne style residential building. It is notable for the moulded brick on the front gable and the verandah across the front of the house. It is a contributing property to the overall character of the Dickson Mills area.

Heritage attributes: Two-and-a-half-storey red brick construction; gable roof; central tripartite window and moulding; decorative brickwork; fenestration; verandah; offset entrance;



86 London Street

86 London Street was constructed in 1910 and is a good example of an Edwardian Classical front gable house. It features a triple window with decorative moulding and shingles in the front gable and a verandah with bowling pin columns. It was first occupied by Thomas Caldwell who worked for the real estate agency, James Middleton and Co. It is a contributing property to the character of the Dickson Mills neighbourhood.

Heritage attributes: Two-and-a-half-storey red brick construction; hipped roof; front gable; shingles; tripartite window and moulding; fenestration; offset entrance; verandah.



87 London Street

87 London Street was constructed in 1885 for Thomas McKee as a rental property. It is a good example of a residential property constructed in the Italianate style with a front bay and wide eaves. It is a contributing structure to the historic character of the Dickson Mills area.

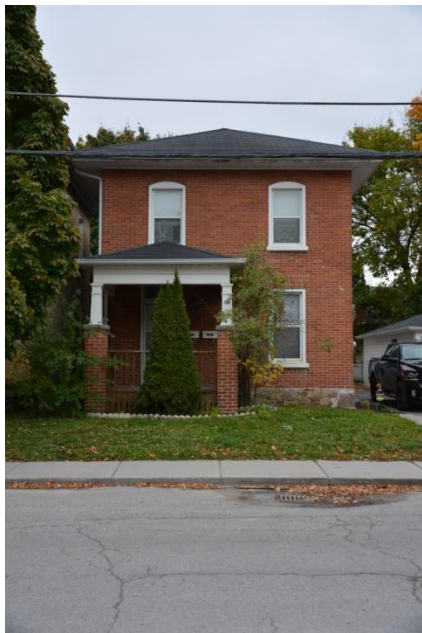
Heritage attributes: Two-storey buff brick construction; hipped roof; projecting bay; fenestration; two-storey porch; entrance and surround; stone foundation.



88 London Street

88 London Street was constructed in 1909 and is a good example of an Edwardian Classical front gable house. Some of its notable features include a two-storey projecting bay, a two-storey verandah, and a triple window with a moulded surround in the gable. It was rented to the Hall family, of which the father, Gordon, worked at CGE. It is a contributing property to the historic character of the Dickson Mills area.

Heritage attributes: Two-and-a-half-storey red brick construction; hipped roof; front gable; tripartite window and moulding; shingles; two-storey bay; two-storey porch; brick piers; grouped columns; entablature; fenestration; stone foundation.



91 London Street

91 London Street was constructed in 1885 and is a good example of a hipped-roof vernacular residential building from this period. It was constructed for George McWilliams, a pump manufacturer for the Dickson Mill and demonstrates the demographic of the neighbourhood which was overwhelmingly comprised of people working at the mill or in associated industries. It is an important contributing property to the historic landscape of the Dickson Mills area.

Heritage attributes: Two-storey red brick construction; hipped roof; rounded upper storey windows; fenestration; entrance porch; square columns; entablature; brick piers; offset entrance; stone foundation.



92 London Street

92 London Street was constructed prior to 1875 as it appears on the Bird's Eye map from that year. It is a good example of a vernacular, gable front Victorian residential property and is a contributing structure to the historic character of the Dickson Mills area.

Heritage attributes: One-and-a-half-storey red brick construction; gable roof; rusticated quoins; fenestration; porch; brick piers; entablature; square columns; offset entrance.



98-100 London Street

98-100 London Street was constructed in the early 1870s as a rental property for George A. Cox. It is a unique example of an Ontario Gothic cottage due to its high stone foundation. It demonstrates a number of well-executed features associated with this style including the steeply pitched gable, double rounded window and buff brick detailing. It is a contributing feature to the overall historic landscape of the Dickson Mills neighbourhood.

Heritage attributes: One-and-a-half-storey red brick construction; gable roof; chimneys; central gable with paired rounded windows; buff brick voussoirs; buff brick quoins; symmetrical composition; entrances with sidelights and transoms; sash windows; fenestration; porch with decorative woodwork; stone foundation; brick piers.



114 London Street

114 London Street was constructed in 1850s and was occupied by blacksmith George Mills. It is a good example of a mid-Victorian vernacular house with a gable front. It is a contributing property to the historic character of the Dickson Mills area.

Heritage attributes: One-and-a-half-storey construction; gable roof; offset entrance; fenestration.



136-148 London Street

136-148 was completed around 1890 and is a good example of a late nineteenth century residential terrace. Comprised of seven units and constructed in buff brick, the property features interesting, contrasting heads on its upper and lower storey windows. It is important as an example of this housing type in Peterborough.

Heritage attributes: Two-storey buff brick construction; hipped roof; fenestration; offset entrances in each unit.



141-149 London Street

141-149 London Street was constructed in 1885 and is an excellent example of late nineteenth century terraced housing. Comprised of five units, it features some well executed and distinctive decorative elements including the brick window hood with keystones and brick coursing, executed by well-known local mason J.J. Hartley, and decorative woodwork on the verandahs by carpenter J.D. Baptie. It is an important example of this housing type in Peterborough.

Heritage attributes: Two-storey red brick construction; hipped roof; fenestration; voussoirs; decorative keystones; offset entrances in each unit; verandah; decorative woodwork; string coursing.



174 London Street

174 London Street was constructed in 1885 and is an excellent example of an Italianate residential dwelling. It retains many important features of this style including a two-storey projecting bay with a gable on the front elevation and wide overhanging eaves. It is an important historic feature in the overall historic landscape of London Street.

Heritage attributes: Two-storey buff brick construction; hipped roof; cupola; projecting two-storey bay; broken gable; shingles; central window; brackets; verandah; bowling pin columns; fenestration; entrance with sidelights and transom.



176 London Street

176 London Street was constructed between 1905 and 1906 and is a good example of an Edwardian front gable house. It retains the shingles in its front gable, stained glass transoms and a two-storey verandah. It is a contributing property to the overall historic landscape of London Street.

Heritage attributes: Two-and-a-half-storey red brick construction; hipped roof; front gable; central rounded window; shingles; fenestration; windows with transoms; two-storey entrance porch; entrance with transom; projecting side gable; chimney.



190 London Street

190 London Street was constructed around 1908 and may have replaced an older house on this site. It is an excellent example of an Edward front gable house and includes a gable window with a decorative surround, a two-storey projecting bay, a unique rounded verandah across the front of the house with bowling pin columns and an oriel window on the side of the house. It is an important contributing property to the historic landscape of London Street.

Heritage attributes: Two-and-a-half-storey red brick construction; hipped roof; front gable; shingles; central tripartite window and moulding; corbels; dormer; two-storey bay; verandah with bowling pin columns; fenestration; stone foundation; oriel window.



194 London Street

194 London Street was constructed around 1908 at the same time as its neighbour at 190 London Street. It is a good example of an Edwardian front gable house with a triple window and shingles in the gable. It was owned by Francis Hassard, the general secretary of the YMCA, located nearby. It is a contributing property to the historic character of London Street.

Heritage attributes: Two-and-a-half-storey red brick construction; hipped roof; front gable; singles; tripartite window and moulding; fenestration; offset entrance and surround; bargeboard.



198 London Street

198 London Street was constructed in the early 1890s in the Queen Anne style. It features distinctive raised brick moulding around its second storey window. It was owned by Robert McWhinnie, the proprietor of local shoestore, Foot and McWhinnie, located at 384 George Street North. It is a contributing property to the overall historic landscape of London Street.

Heritage attributes: Two-storey red brick construction; hipped roof; projecting gable; shingles; central window; brackets; decorative brickwork; offset entrance; asymmetrical massing.



199 London Street

199 London Street was likely constructed in the 1890s and is a good example of vernacular worker's housing from the late nineteenth century. Its hipped roof is typical of this type of building and it is a good example in Peterborough. It contributes to the historic character of London Street.

Heritage attributes: Two-storey red brick construction; hipped roof; offset entrance; porch; fenestration; stone foundation.



203 London Street

203 London Street is a frame house built in 1875. It is a good example of a gable front Victorian vernacular residential building from this time period. It is cohesive with the historic residential character of this part of London Street and is similar to its neighbour at 209 London Street which is also a good example of this housing type.

Heritage attributes: One-and-a-half storey frame foundation; gable roof; chimney; fenestration; bay window; offset entrance; porch.



209 London Street

209 London Street is a brick house building in the late 1870s. It is a good example of a gable front Victorian vernacular residential building from this time period and retains a number of interesting details including the buff brick voussoirs and one storey bay on the east side of the house. It is cohesive with the historic residential character of this part of London Street and is similar to its neighbour at 203 London Street which is also a good example of this housing type.

Heritage attributes: One-and-a-half-storey red brick construction; gable roof; rounded upper storey windows; buff brick voussoirs; shutters; fenestration; enclosed entrance porch.



211-213 London Street

211-213 London Street was constructed prior to 1872. A photograph of the house dating to this year still exists and shows the property with two doors even at that time. It has a distinctive paired rounded window in the centre gable, decorative gingerbread woodwork, and buff brick detailing in the voussoirs and quoins. It is a good example of an Ontario Gothic cottage and contributes to the historic character of this part of London Street.

Heritage attributes: One-and-a-half storey red brick construction; buff brick voussoirs; buff brick quoins; gable roof; central gable with paired rounded window; gingerbread; entrance porch; square columns; brick piers; symmetrical massing; fenestration.



212-216 London Street

212-216 London Street was likely constructed in the 1890s and is a unique example of a terraced house constructed in the Edwardian classical style. The 3-unit building includes Edwardian classical features such as: porches with bowling pin columns; pediments with singles above the porches; and stained glass transom windows on the main floor. It is one of only a few terraced houses constructed in this style and is an important example of this type within the city. Its style and character are also consistent with the wider historic landscape of London Street.

Heritage attributes: Two-storey red brick construction; gable roof; dormers with shingles and return eaves; fenestration; lug sills; offset entrances in each unit; windows with rounded stained glass transoms; entrance porches; pediments; bowling pin columns; piers.



217 London Street

217 London Street was constructed in the late 1880s by local bricklayer J.J. Hartley who completed many houses throughout the city at this time. It is the matching property to its neighbour, 221 London Street, and is a good example of both Hartley's work and of houses of this size constructed with Italianate details, including the two-storey projecting bay and wide eaves. It is a contributing property to the historic character of this part of London Street and a good example late nineteenth century residential construction.

Heritage attributes: Two-storey buff brick construction; hipped roof; two-storey projecting bay; fenestration; asymmetrical massing; entrance porch; double doors; stone foundation.



218 London Street

218 London Street was constructed around 1890 and is a good example of a Queen Anne style residence. It retains excellent examples of late nineteenth century stained glass. It also features return eaves, which is unusual for a Queen Anne style house. It is a contributing property to the historic landscape of London Street.

Heritage attributes: Two-storey red brick construction; hipped roof; projecting gable; return eaves; central window; coursing; windows with stained glass transoms; offset entrance; porthole window with stained glass; entrance porch; chimney.



220 London Street

220 London Street was constructed around 1870. It is a good example of a mid-Victorian residential property and is contributing structure to the overall historic character of London Street.

Heritage attributes: Two-storey red brick construction; hipped roof; front gable; side gable; fenestration; offset entrance; porch.



222 London Street

222 London Street was constructed around 1890 and is a good example of a vernacular gable front Victorian house. It retains its decorative woodwork in the front gable and is stylistically related to a number of the surrounding properties. It is a contributing feature to the historic character of London Street.

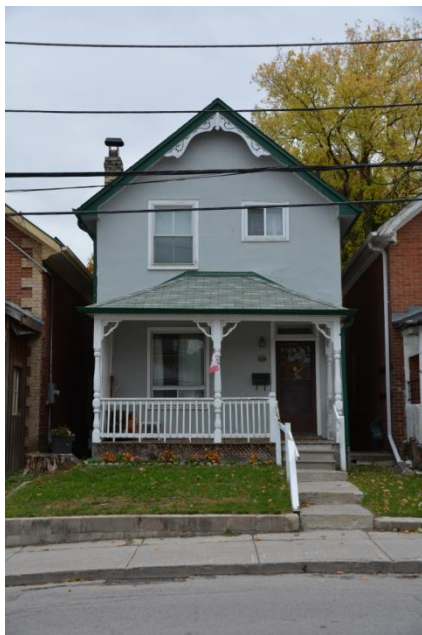
Heritage attributes: One-and-a-half-storey red brick construction; gable roof; fenestration; offset entrance; porch; bargeboard; finial.



223 London Street

223 London Street first appears in the City Directories in 1888 but is likely a much older dwelling. Stylistically, it appears to have been constructed in the mid-nineteenth century and may have been moved here from another location. It is a contributing property to the historic character of London Street.

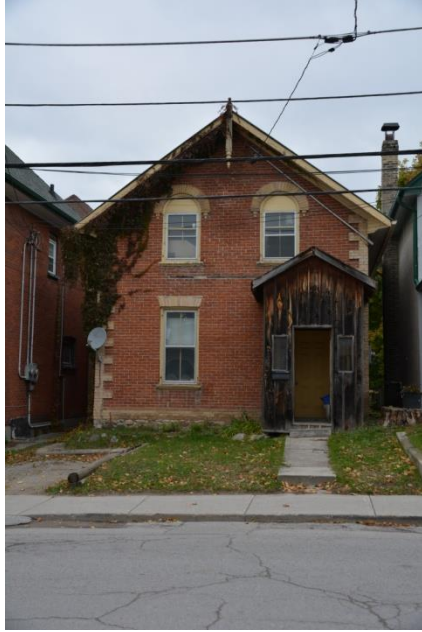
Heritage attributes: One-storey construction; gable roof; L-shaped plan; central entrance; porch; symmetrical composition.



228 London Street

228 London Street was constructed in the late 1880s and is a good example of a vernacular gable front Victorian house. It retains its decorative woodwork in the front gable and its verandah, and is stylistically related to a number of the surrounding properties. It is a contributing feature to the historic character of London Street.

Heritage attributes: Two-storey construction; gable roof; chimney; decorative bargeboard; fenestration; entrance porch with awning roof, turned columns and decorative woodwork; offset entrance with transom.



230 London Street

230 London Street was constructed around 1851 and it appears on the 1875 Bird's Eye view map. It possesses a number of interesting architectural details, including its unique buff brick window surrounds on the second storey. It is a contributing property to the historic character of London Street.

Heritage attributes: One-and-a-half storey red brick construction; buff brick quoins; buff brick window hoods; gable roof; finial; buff brick voussoirs; offset entrance; stone foundation; fenestration; rounded upper storey windows.



246 London Street

246 London Street was constructed in 1911 and is a good example of an early twentieth century residential property constructed using Edwardian classical features. These include the triple window in the front gable, the porch with pediment and offset entrance. The house also features unique moulded brick details and brackets on the gable end. It is a contributing property to the historic landscape of London Street.

Heritage attributes: Two-and-a-half-storey red brick construction; gable roof; tripartite gable window; decorative brickwork; entrance porch; offset entrance; fenestration.



252 London Street

252 London Street was constructed around 1910 and is a good example of a residential building constructed using Queen Anne style features. These include the offset gable bay and moulded brick. It is a contributing property to the historic character of London Street.

Heritage attributes: Two-storey red brick construction; hipped roof; projecting gable; fenestration; porch; square columns; brick piers; entablature; entrance with transom; shutters.



253 London Street

253 London Street was constructed in 1907 and is an excellent example of an Edwardian front gable house. It retains its front gable with shingles and window with decorative moulded and a front verandah with an offset entrance and pediment. It was owned by Robert Gilles, the proprietor of 2 stables on Water and Chambers streets. It is a contributing property to the historic landscape of London Street.

Heritage attributes: Two-and-a-half-storey red brick construction; hipped roof; front gable; shingles; central window with moulding; side gable; corbels; fenestration; lug sills; entrance porch; pediment; entablature; dentils; columns; piers; brick knee wall; side porch.



254 London Street

254 London Street was constructed in 1922 and is a good and late example of an Edwardian classical front gable house. It retains its shingles and window with decorative moulding in the gable and is a contributing property to the historic landscape of London Street.

Heritage attributes: Two-and-a-half-storey red brick construction; hipped roof; front gable; central window; offset entrance; porch; square columns; entablature; fenestration.



256 London Street

256 London Street was constructed in 1925 and is a typical example of a mid-1920s bungalow. It includes a number of important features of this housing type including the large front wall dormer, offset entrance, and integrated verandah. It is a contributing property to the historic landscape of London Street.

Heritage attributes: One-and-a-half-storey brick construction; gable roof; chimney; front wall dormer; fenestration; integrated verandah.



490 Dickson Street

490 Dickson Street was constructed for Samuel Dickson who intended to move to the house from his older property at 14 Murray Street, located next door. During its construction in 1870, Dickson drowned in his millpond and never occupied the house, although it remained in the Dickson family until 1947. The house has undergone a number of modern renovations to convert it to apartments but nevertheless retains historic features evident from Dickson Street, including massing and detailing, such as brick quoins and two-storey bay. It has important connections to the Dickson family and is a contributing heritage property in the Dickson Mills neighbourhood.

Heritage attributes: Two-storey buff brick construction; asymmetrical massing; rusticated quoins; rounded windows; fenestration.



497-499 Dickson Street

497 Dickson Street was constructed as a rental property for John A. Hartley prior to 1875 when it appears on the Bird's Eye View map of the city. It was occupied by various working class tenants whose occupations reflected Peterborough's increasingly diverse industrial base during the second half of the nineteenth century. A frame house, it is a good example of worker's housing from this period and has an interesting central window with scalloped detailing. It has contextual value as part of the Dickson Mills neighbourhood.

Heritage attributes: One-and-a-half-storey frame construction; gable roof; central gable; double central window and surround; entrance porch; sash windows; fenestration; symmetrical massing; stone foundation.



533 Waterford Street

533 Waterford Street was constructed around 1880 and is a good example of vernacular worker's housing from the late nineteenth century. It is a contributing property to the overall character of the Dickson Mills area through its architecture and its role as worker's housing in this neighbourhood.

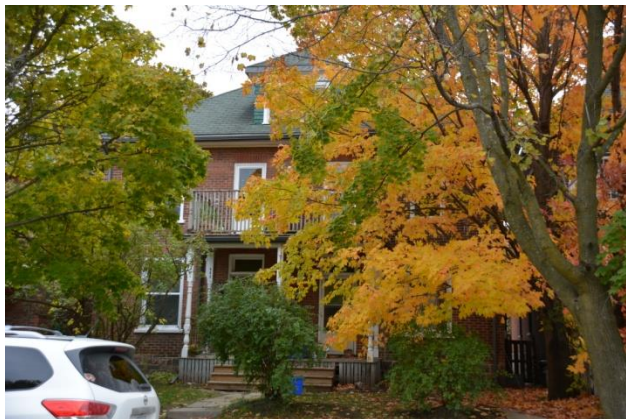
Heritage attributes: One-storey frame construction; symmetrical massing; fenestration; central entrance.



536 Waterford Street

536 Waterford Street was constructed in 1894 and is a good example of a Queen Anne style house in Peterborough. It has a unique pebbledash finish with half timbering in its front gable, an uncommon feature which appears on only a few houses in the city. It is a contributing property to the historic landscape of the Dickson Mills neighbourhood.

Heritage attributes: Two-storey red brick construction; projecting gable; half-timbering; central window; hipped roof; chimney; asymmetrical massing; verandah; square columns; offset entrance; fenestration.



540-542 Waterford Street

540-542 Waterford Street was constructed between 1904 and 1905 and is a good example of a Georgian Revival multi-residential property. Its symmetrical layout and small upper dormer make it a good example of this housing type, and the one of only examples in this area. It maintains and supports the historic, residential character of Dickson Mills.

Heritage attributes: Two-storey red brick construction; hipped roof; central dormer; symmetrical massing; fenestration; entrance porch; entrances with transoms.



547 Waterford Street

547 Waterford Street was constructed prior to 1880 and is a good example of a vernacular gable front house from the late nineteenth century. It is a contributing property to the overall landscape of the Dickson Mills neighbourhood.

Heritage attributes: Two-and-a-half-storey brick construction; gable roof; fenestration; entrance porch with awning roof; offset entrance with transom.



551 Waterford Street

551 Waterford Street appears in the 1875 Bird's Eye View map of Peterborough and is likely significantly older. It was occupied by a teacher, W.J. Smith, in 1870. It is a good example of a vernacular Victorian gable front house and is a contributing feature of the overall Dickson Mills area.

Heritage attributes: One-and-a-half-storey construction; gable roof; chimney; fenestration; offset entrance; verandah.



560 Waterford Street

560 Waterford Street was constructed in 1933 and is a very good example of a Georgian Revival house in Peterborough. It has a hipped roof with a small gable, typical of the style, as well as a symmetrical composition and a classically inspired entrance porch. It contributes to the historic character of Waterford Street and the Dickson Mills neighbourhood.

Heritage attributes: Two-storey red brick construction; hipped roof; symmetrical massing; central dormer; central entrance with sidelights; entrance porch; square columns; entablature; fenestration.



534 Harvey Street

534 Harvey Street was constructed in the mid-1880s and is an extremely distinctive residential structure in the Queen Anne Style. In particular, it is defined by the window surrounds on the front elevation of the house which feature corbelling and a decorative cornice on the second storey. It is a contributing structure to the overall character of the Dickson Mills area.

Heritage attributes: Two-and-a-half-storey brick construction; gable roof; central window; decorative brickwork; cornice; corbels; offset entrance with transom; fenestration.



537-539 Harvey Street

537-539 Harvey Street is a good example of a late nineteenth century semi-detached house defined by its two symmetrical bays on either side of the respective entrances of the two units. It is a contributing structure to the overall landscape of the Dickson Mills area.

Heritage attributes: Two-storey buff brick construction; hipped roof; projecting gables; central windows; windows with transoms; verandah; central entrances; symmetrical massing.



543 Harvey Street

543 Harvey Street was constructed around 1904 and is a good example of an early twentieth century residence in a simplified Queen Anne style. It retains a fine example of residential stained glass on its front bay. This type of residence was often constructed for middle class families during the early twentieth century and reflects the general demographic of the area. It is a contributing heritage resource to the historic Dickson Mills neighbourhood.

Heritage attributes: Two-storey red brick construction; projecting gables; shingles; central window; windows with stained glass transoms; offset entrance with transom; two-storey entrance porch; columns; entablature; fenestration; stone foundation; asymmetrical massing.



552 Harvey Street

552 Harvey Street was constructed in 1860 as the home for local carpenter John Kincaid. It is a good example of mid-nineteenth century worker's housing with a central entrance and gable. It is a contributing structure to the overall character of the Dickson Mills area.

Heritage attributes: One-and-a-half-storey frame construction; gable roof; central gable; symmetrical massing; central entrance.



533 Harvey Street

533 Harvey was constructed in the 1860s for cabinet maker John Brown who lived there until the 1890s. The property is a good example of worker's housing from the mid-nineteenth century constructed in the neoclassical style with return eaves, a symmetrical front elevation and a verandah across the front of the house. It reflects the demographic of the Dickson Mills neighbourhood during this time and it a contributing resource to the historic character of the neighbourhood.

Heritage attributes: One-and-a-half-storey frame construction; gable roof; symmetrical massing; dormer; central entrance; verandah; fenestration.



559 Harvey Street

559 Harvey Street was constructed the late 1880s and occupied by a Mrs. Wilson. It is a good example of late nineteenth century vernacular housing and contributes to the historical character of the Dickson Mills neighbourhood.

Heritage attributes: Two-storey brick construction; hipped roof; chimney; decorative brickwork; coursing; fenestration; symmetrical massing; windows with transoms; entrance with transom.



45 McDonnel Street

45 McDonnel Street was constructed around 1870 for William H. Wrighton, a local merchant, to replace an older house. It is a good example of Victorian residential design executed in brick and is a contributing heritage property in the historic Dickson Mills neighbourhood.

Heritage attributes: Two-storey red brick construction; buff brick quoins; buff brick voussoirs; stone foundation; hipped roof; fenestration; central entrances with sidelights; entrance porch.



50 McDonnel Street

50 McDonnel Street was constructed in 1925 for Alfred Perrin, a salesman at the Peterborough Cereal Company. It is a good example of a Georgian Revival house constructed in the mid-1920s and includes a number of key features associated with this style. These include the small central dormer, hipped roof, symmetrical window and door arrangement and restrained Classical detailing.

Heritage attributes: Two-storey red brick construction; hipped roof; central dormer; rounded ground floor windows; entrance porch; columns; entablature; fenestration.



51 McDonnel Street

51 McDonnel Street was constructed in the mid-1880s for Sarah Snyder. It is executed in brick with two bays and a hipped roof. It is a good example of a late Victorian residential building and a contributing feature of the historic landscape of the Dickson Mills neighbourhood.

Heritage attributes: Two-storey construction; hipped roof; wide eaves; fenestration; offset entrance with transom; stone foundation.



52 McDonnel Street

52 McDonnel Street was constructed in the late 1880s for W.A. Meldrun. It is a good example of a late nineteenth-century bay and gable house and features interesting bargeboard details. The property is an important contributing feature to the historic Dickson Mills neighbourhood.

Heritage attributes: Two-and-a-half-storey construction; gable roof; projecting gable; two-storey bay; decorative bargeboard; fenestration; entrance with transom and side lights; stone foundation; modern entrance porch and sunroom.



59 McDonnel Street

59 McDonnel Street was constructed in the late 1850s for local merchant John Haffey. It follows a three-bay, symmetrical Georgian plan with a truncated hipped roof and retains a well-executed front verandah with ornate trellis trim. It is a contributing property to the heritage landscape of the Dickson Mills neighbourhood.

Heritage attributes: Two-storey buff brick construction; hipped roof; symmetrical massing; central entrance with transom and sidelights; fenestration; stone foundation.



65 McDonnel Street

65 McDonnel Street was likely constructed in the late 1850s for John Kennedy, who owned a several properties in this area. It appears in the 1875 Bird's Eye View map of Peterborough and is an important contributing property to the overland landscape of the Dickson Mills neighbourhood.

Heritage attributes: Two-and-a-half-storey buff brick construction; gable roof; decorative brick work; dog tooth coursing; windows with stained glass transoms; fenestration; voussoirs; verandah; offset entrance with transom.



69 McDonnel Street

69 McDonnel Street appears in the 1875 Bird's Eye View map of Peterborough. It was likely constructed for a John Kennedy in the late 1850s. It is a contributing property to the historic landscape of Dickson Mills.

Heritage attributes: One-and-a-half storey construction; gable roof; fenestration; entrance.



71 McDonnel Street

71 McDonnel Street was constructed around 1903 and is an example of an Edwardian Classical front gable house. It retains its front gable with windows and bargeboard. It is a contributing property to the historic landscape of the Dickson Mills area.

Heritage attributes: Two-and-a-half-storey brick construction; gable roof; fenestration; offset entrance with transom.



74 McDonnel Street

74 McDonnel Street is a good example of an early Victorian vernacular residence. Constructed in the late 1860s for Lazarus Payne, it is executed in red brick and features return eaves on the front elevation. It is a contributing feature to the overall landscape of the historic Dickson Mills area.

Heritage attributes: One-and-a-half-storey red brick construction; gable roof; return eaves; verandah with awning roof; entrance with sidelights; fenestration.



78 McDonnel Street

78 McDonnel Street was constructed around 1903 and is a good example of an Edwardian Classical front gable house. It retains its shingled front gable with central window and verandah supported by classical columns. It is a contributing feature to the overall landscape of the historic Dickson Mills area.

Heritage attributes: Two-storey red brick construction; hipped roof; gable end; shingles; central window; projecting gable bay; offset entrance; verandah with columns; fenestration.



82 McDonnel Street

82 McDonnel Street is a good example of a Victorian residential building executed in brick. It was constructed as a rental property around 1870 for Lazarus Payne who also owned 74 McDonnel Street. It is a contributing feature to the overall landscape of the historic Dickson Mills area.

Heritage attributes: One-and-a-half storey red brick construction; gable roof; fenestration; offset entrance.



88 McDonnel Street

88 McDonnel Street was constructed in the late 1850s as a rental property for William Hall. It is a good example of rental accommodation for the working classes as constructed in the middle of the nineteenth century. It is an important contributing feature of the Dickson Mills neighbourhood.

Heritage attributes: One-storey frame construction; symmetrical massing; chimney; central entrance; fenestration.



92 McDonnel Street

92 McDonnel Street was constructed in the late 1850s as a rental property for William Hall. It is a good example of rental accommodation for the working classes as constructed in the middle of the nineteenth century. It is an important contributing feature of the Dickson Mills neighbourhood.

Heritage attributes: One-storey frame construction; symmetrical massing; central entrance; fenestration; entrance porch.



96 McDonnel Street

96 McDonnel Street was constructed around 1905 and is a good example of an Edwardian Classical home. It has a distinctive front gable with return eaves and a central window with a decorative surround, as well as the classical verandah typical of this style. It is a contributing property in the historic Dickson Mills neighbourhood.

Heritage attributes: Two-storey red brick construction; hipped roof; projecting gable; return eaves; brackets; central window with moulding; shingles; offset entrance with transom; fenestration; verandah with columns and pediment.



106 McDonnel Street

106 McDonnel Street is a good example of a late Victorian Italianate residence in Peterborough. Constructed in the late 1880s, it features the typical projecting front bay and wide eaves of the style. It is a contributing property in the historic Dickson Mills neighbourhood.

Heritage attributes: Two-storey buff brick construction; hipped roof; two-storey bay; fenestration; stone foundation; asymmetrical massing.



112 McDonnel Street

112 McDonnel Street was constructed in the late 1880s and was occupied during that period by the Rev. M.L. Pearson, the minister of George Street Methodist, late United, Church and the grandfather of Prime Minister Lester B. Pearson. It is a good example of a late nineteenth-century bay and gable house and is a contributing feature of the historic Dickson Mills neighbourhood.

Heritage attributes: Two-storey buff brick construction; hipped roof; chimney; projecting gable; shingles; central window; bay; fenestration; voussoirs with keystones; stone foundation; entrance porch; asymmetrical massing.



174 McDonnel Street

174 McDonnel Street was constructed in 1894 and is a good example of a hipped roof vernacular worker's house from the late nineteenth century. It has the typical hipped roof and offset entrance of this housing type. It is a contributing feature to the historic landscape of McDonnel Street.

Heritage attributes: Two-storey construction; hipped roof; fenestration; offset entrance.



176 McDonnel Street

176 McDonnel Street was constructed in the late nineteenth century and is a good example of an estate house from this period. It integrated classical design elements that were gaining popularity during this period, including a singled gable, hipped roof and verandah with columns and entablature. It is a contributing feature to the historic landscape of McDonnel Street.

Heritage attributes: Two-storey red brick construction; hipped roof; chimneys; projecting gable; fenestration; lintels; windows with transoms; entrance with transom and sidelights; two-storey verandah; entablature; rusticated stone foundation.



192-194 McDonnel Street

192-194 McDonnel Street was constructed prior to 1875 with the two storey gable bay added after 1890. 192 was owned and occupied by Anna Hay, the daughter of Thomas A. Stewart, and 194 was used as a rental property. It is a good example of a Victorian residential building.

Heritage attributes: Two-storey buff brick construction; gable roof; projecting gable; return eaves; two-storey bay; one-storey bays; recessed entrances; entrances with transom and sidelights; fenestration; chimneys; decorative bargeboard; stone foundation.



212 McDonnel Street

212 McDonnel Street was constructed around 1900 and is a good example of turn of the century residential design. Occupied by William Sims, the manager of the Trent Valley Peat fuel Company, the house has an eclectic mix of design features characteristic of the late nineteenth century. These include the half timbered gable with pebbledash finish and corbelling and the classical verandah with columns, pediments and rusticated piers.

Heritage attributes: Two-storey red brick construction; gable roof; half timbering; pebbledash finish in gable; central window; finial; chimney; fenestration; sills; verandah; paired columns; pediments; stone piers; entrance with rusticated surround.



216 McDonnel Street

216 McDonnel Street was constructed prior to 1858 when it appears in the Assessment Rolls. It is likely of stacked plank construction, a method of construction used extensively in Peterborough during the mid-nineteenth century, but rare elsewhere. It is important due to its construction method and age.

Heritage attributes: Two-storey stacked plan construction; hipped roof; central entrance; fenestration.



222 McDonnel Street

222 McDonnel Street was constructed around 1866 and was used as a rental property. It is a good example of a mid-Victorian residential building.

Heritage attributes: Two-storey construction; hipped roof; fenestration; offset entrance.



226 McDonnel Street

226 McDonnel Street was constructed in 1918 and is a good example of an early twentieth century residence. It uses features from the developing Classical Revival movement including the hipped roof, wide eaves, and bank of window on the lower storey. It is a contributing feature to the residential streetscape.

Heritage attributes: Two-storey red brick construction; hipped roof; asymmetrical massing; fenestration; offset entrance.



227 McDonnel Street

227 McDonnel Street was constructed in the late 1860s for Henry Hartley. It is a good example of an Ontario Gothic cottage constructed in the 1860s and includes many important features of the style as executed during that period including buff brick accents, a front verandah, a rounded arched window in the central gable and a central entrance with transom and sidelights.

Heritage attributes: One-and-a-half-storey construction; red brick; gable roof; central gable; central rounded window with radiating buff brick voussoir; buff brick quoins; buff brick voussoirs; chimneys; central entrance with transom and sidelights; verandah; fenestration.



228 McDonnel Street

228 McDonnel Street was constructed in 1908 and is a good example of an Edwardian Classical front gable residence. It has the typical shingled front gable with central window of this style, as well as a two storey bay. It features a two-storey entrance porch with triple columns on brick piers and an entablature with corbelling and dentils.

Heritage attributes: Two-storey red brick construction; hipped roof; projecting side gable; front gable; tripartite window with moulding; shingles; two-storey bay; stone foundation; two-storey porch; paired columns; brick piers; entablature; dentils; fenestration; entrance; chimney.



232 McDonnel Street

232 McDonnel Street was constructed around 1908 and is a good example of an Edwardian Classical front gable residence. It retains a number of important and detailed decorative features including the shingles in the gable, decorative wooden bargeboard with corbelling, a central gable window with decorative surround, and a verandah supported by Doric columns and an entablature with corbels.

Heritage attributes: Two-storey red brick construction; hipped roof; projecting side gable; front gable; central window with moulding; shingles bargeboard with corbels; verandah; central entrance; columns; entablature with corbels; fenestration; chimneys.



235 McDonnel Street

235 McDonnel Street was constructed prior to 1875 and appears on the Bird's Eye View map of the city. It was constructed as a corner store with a residence for the proprietor in an upper storey apartment and is a good example of a building outside the main commercial core of the city constructed for this purpose prior to 1875.

Heritage attributes: Two-storey construction; hipped roof; ground floor storefront; fenestration.



236 McDonnel Street

238 McDonnel Street was constructed in 1883 as a brick veneer shop; it also contains a dwelling for its owner, R. Lund. It is a good example of an attached commercial and residential building occupying a corner lot, with the residential section of the building placed behind the main store front facing onto McDonnel Street.

Heritage attributes: Two-storey brick construction; hipped roof; entrances; fenestration.



243 McDonnel Street

243 McDonnel Street was constructed prior to 1851 and was built of brick, making it one of the oldest brick dwellings in the city: the 1851 census listed only five brick houses within the city limits. It was occupied by the Simm family from at least 1851 until 1915.

Heritage attributes: One-and-a-half storey brick construction; gable roof; chimney; central gable with window; fenestration; central entrance.



246 McDonnel Street

246 McDonnel Street was constructed in the late 1880s for Frederick Foot, who owned a shoe store. It is a good example of a modest house constructed for a local business owner in late Victorian Peterborough.

Heritage attributes: Two-storey construction; hipped roof; offset entrance; fenestration; verandah.



250 McDonnel Street

250 McDonnel Street was constructed around 1880 to replace an older house which had been on the property since the mid-1840s. It is a good example of a modest residential property constructed in the 1880s to replace a structure from Peterborough's earlier phase of development as local people became more prosperous and settled.

Heritage attributes: Two-storey red brick construction; hipped roof; chimney; offset entrance; fenestration; bay window.



254-258 McDonnel Street

254-258 McDonnel Street was constructed in the late 1880s as rental properties for William Yelland. It is a very good example of a late Victorian terraced house with three units. It retains important decorative features including its ornate front verandah and radiating voussoirs with keystones.

Heritage attributes: Two-storey red brick construction; brackets; pilasters; rounded upper storey windows; fire separation walls; radiating voussoirs with keystones; verandah with decorative woodwork; offset entrances in each unit; fenestration.



52 Murray Street

52 Murray Street was constructed around 1847 for gentleman John A. Hartley who was born in Ireland in about 1827. The house appears in a pre-1850 painting and is listed in the 1861 census as a frame house occupied by Hartley and his wife. It is an important early residence in Peterborough and a contributing heritage feature of the historic Dickson Mills neighbourhood.

Heritage attributes: One-and-a-half-storey frame construction; asymmetrical massing; gable roofs; offset entrance; fenestration.



55 Murray Street

55 Murray Street was constructed in 1930 as the caretaker's house for the County Courthouse and continues to be owned by the County for this purpose. It is a good, but late, example of an Edwardian foursquare house. It possess and retains an important historical connection to the County Courthouse precinct.

Heritage attributes: Two-storey red brick construction; hipped roof; chimney; central dormer; fenestration; entrance porch square columns; entablature; pediment; brick piers; stone foundation; offset entrance.



60 Murray Street

60 Murray Street was constructed by Alexander Morrow around 1850. It is a good example of a mid-nineteenth century frame house and has important connections to the Morrow family in Peterborough. It appears on the 1875 Bird's Eye View map of Peterborough and is an important contributing structure of the historic Dickson Mills neighbourhood.

Heritage attributes: One-and-a-half-storey frame construction; gable roof; central gable with rounded window; chimney; central entrance with transom; rear addition; fenestration.



62 Murray Street

62 Murray Street was constructed by Alexander and Mary Morrow next to their property at 60 Murray Street as a retirement home. It was constructed between 1870 and 1875 and appears on the 1875 Bird's Eye View map of the city. Both Morrows died of old age in the house, within a few weeks of each other in spring 1876. It is a good example of a Regency style cottage in Peterborough and an important contributing feature of the historic Dickson Mills neighbourhood.

Heritage attributes: One-storey construction; hipped roof; fenestration; entrance.



68 Murray Street

68 Murray Street was constructed for Charles Ormond, a local druggist in 1873 and was made of solid brick. It appears on the 1875 Bird's Eye View map of Peterborough. It has some unusual architectural features including the raised window surrounds. It is a good example of an merchant class house constructed in Peterborough during this period and is an important contributing structure to the historic character of the Dickson Mills neighbourhood.

Heritage attributes: Two-storey brick construction; hipped roof; window surrounds; fenestration; rusticated quoins; coursing; central entrance and surround; symmetrical composition.



110 Murray Street

110 Murray Street is a frame house constructed in the mid-1850s for John Kennedy. It appears on the 1875 Bird's Eye View map of Peterborough with a verandah across the front of the house. It is important as an early building in Peterborough and as part of the historic Dickson Mills neighbourhood.

Heritage attributes: Two-storey frame construction; gable roof; chimney; fenestration; symmetrical massing; entrances.



191-197 Murray Street

The complex at 191-197

Murray Street was constructed in the mid-1910s and known as the Park View Apartments. They are a good example of Edwardian apartment building design, using features prevalent in the Edwardian Classical style that was popular during this period, including the two-storey balconies supported by columns. They are an important and rare example of an Edwardian apartment building in Peterborough.

Heritage attributes: Two-storey red brick construction; gable and hipped roofs; dormers; two-storey porches; one-storey porch; columns; entablatures; brick piers; fenestration; entrances.



223 Murray Street

223 Murray Street was constructed in the 1870s as a single family home and is a good example of Victorian vernacular residential design. The use of buff brick to add decorative elements to the house is typical of this period and, in this property, accents the windows, quoins and base of the house.

Heritage attributes: One-and-a-half-storey red brick construction; buff brick voussoirs; buff brick quoins; gable roof; rounded upper storey windows; fenestration.



226 Murray Street

226 Murray Street is a log house that dates from prior to 1848 when it first appears on this site. It is possible that it was erected elsewhere and moved to its present location. It is an important structure in Peterborough both for its age and construction material.

Heritage attributes: One-and-a-half-storey log construction; gable roof; fenestration; entrance.



234 Murray Street

234 Murray Street was constructed prior to 1858 when it is first listed in the City Directories. It was owned by William Wand, a carpenter. It is constructed in wood and is important as an early residential building in Peterborough.

Heritage attributes: One-a-half-storey frame construction; gable roof; fenestration; offset entrance.



55 Brock Street

55 Brock Street was constructed in 1910 and is a good example of the use of period revival features in a relatively modest residential property. In particular, it is notable for its use of parapet gables on both the north and east elevation which are borrowed from the Tudor Revival style prevalent during this period, as well as its asymmetrical massing and buff brick construction. It was first occupied by G.C. Wainwright, the manager of the Bank of Ottawa at 403-405 George Street North.

Heritage attributes: Two-storey brick construction; gable roof; projecting gable; parapet gables; chimneys; fenestration; offset entrance; symmetrical massing.



166 Brock Street

166 Brock Street was constructed prior to 1870 for Dr. George Burnham Jr. It features an interesting parapet gable on both sides of the structure. It is a contributing property to the historic landscape of Brock Street.

Heritage attributes: Two-storey brick construction; parapet gables; chimneys; fenestration.



213 Brock Street

213 Brock Street was constructed in 1876. It is a good example of vernacular Victorian residential design executed in brick. It retains important decorative features including decorative woodwork along the eaves and the front verandah.

Heritage attributes: One-and-half-storey red brick construction; gable roof; decorative bargeboard; chimney; rounded upper storey windows; voussoirs; entrance with sidelights and transom; fenestration; verandah.



217 Brock Street

217 Brock Street was constructed in the late 1870s for Joseph Keele, a shoemaker, to replace an older house that had been on the site since at least 1851. It is a good example of vernacular Victorian residential design executed in brick and features upper storey rounded windows and brick coursing.

Heritage attributes: Two-storey brick construction; hipped roof; chimney; rounded upper storey windows; fenestration; coursing; offset entrance; porch; columns; pediment with shingles; brick piers.



223 Brock Street

223 Brock Street was constructed in 1930 as the Assembly Gospel Hall. It is an excellent example of 1930s evangelical architecture which, in general, sought to de-emphasize the physical form of the church building, in contrast with mainline denominations. This was achieved through the stripping away of the vast amount of architectural detail while still retaining an architectural profile associated with ecclesiastical design through the steeply pitched gable roof and pilasters along the sides of the building to divide it into bays.

Heritage attributes: Brick construction; gable roof; central entrance; fenestration; pilasters.



226 Brock Street

226 Brock Street is one of three nearly identical Second Empire mansions constructed in the late 1870s on Brock Street near Aylmer Street. 226 Brock Street was occupied by Charles McGill, the manager of the Ontario Bank. By the early twentieth century, it was home to numerous boarders working in various Peterborough businesses and industries, including the Ontario Bank and CGE.

Heritage attributes: Two-storey buff brick construction; hipped roof; projecting bays; brackets; rounded windows; shutters; fenestration; central entrance with transom; entrance porch; columns; entablature; upper storey sleeping porch.



87 Hunter Street W

87 Hunter Street W was constructed in the late 1880s as a row of three connected houses, of which it is the only one that is still standing. It is a good example of a late Victorian residential building and is notable for the porch on the east elevation which features ornate decorative woodwork.

Heritage attributes: Two-storey red brick construction; hipped roof; rounded upper storey windows; fenestration; side porch with decorative woodwork; entrance; asymmetrical massing; fire separation wall.



139-141 Hunter Street W

139-141 Hunter Street W was constructed for James Stevenson in 1862. It is a good example of mid-Victorian commercial building with a protruding central section, pilasters and an entablature. It is historically, physically and visually linked the commercial row on Hunter Street West between Water and George Streets.

Heritage attributes: Three-storey brick construction; flat roof; cornice; entablature; pilasters; projecting central bay; rounded upper storey windows; ground floor storefront; rustication.



163 Hunter Street W

163 Hunter Street W was constructed in 1875 as part of the Oriental Hotel. It is a good example of a mid-Victorian commercial building and retains its pilasters with set back rounded windows. It was originally part of a larger building, the rest of which was demolished in the 1970s. It is an important contributing structure to the Hunter Street West commercial corridor.

Heritage attributes: Three-storey brick construction; flat roof; cornice; brackets; rounded windows; paired windows; fenestration; pilasters; ground floor storefront.



174-180 Hunter Street W

174-180 Hunter Street W was constructed in the late 1870s as a commercial block for Sheriff James Hall. It is a good example of a mid-Victorian commercial block and retains its decorative cornice. It is an important contributing structure to the overall character of the Hunter Street West commercial corridor and is both historically and physically linked to its surroundings.

Heritage attributes: Three-storey brick construction; flat roof; cornice; brackets; rounded windows; fenestration; ground floor storefront; continuation of commercial row.



183 Hunter Street W

183 Hunter Street W was constructed in 1939 as the Bell Telephone Exchange. It is a good example of a telephone exchange building, many of which were constructed throughout Ontario between about 1920 and 1940. Originally two storeys, it is a good example of late 1930s stripped classicism, as applied to a commercial structure, using decorative brickwork to suggest pilasters on the front and side elevations. It is particularly notable for its

front entrance which features ornate metalwork and a decorative door illustrating scenes related to telephone infrastructure.

Heritage attributes: Three-storey red brick construction; decorative brickwork; cornice line; fenestration; ironwork; entrance; door.



192 Hunter Street W

192 Hunter Street W was constructed in 1908 as an office building and originally houses Bell Telephone. It is a good example of an early twentieth century office building, without a storefront, and has well preserved decorative brickwork on the Hunter Street facade. It also features an offset entrance with a decorative surround including brackets and an entablature. It is an important contributing structure to the overall character of the Hunter Street West commercial corridor.

Heritage attributes: Three-storey buff brick construction; cornice; decorative brickwork; fenestration; windows and surrounds; rustication; entrance with surround, brackets and entablature.



197-201 Hunter Street W

197-201 Hunter Street W was constructed in 1883 as the Royal Oak Hotel. It was designed by local architect John Belcher and is important both as part of Belcher's wider body of work in downtown Peterborough and for its technical achievements. The building is situated partially over Jackson Creek and, in order to span the creek, Belcher has to make use of rolled steel girders to support the structure. These were imported from Philadelphia and provided an innovative solution for the problem of crossing the creek.

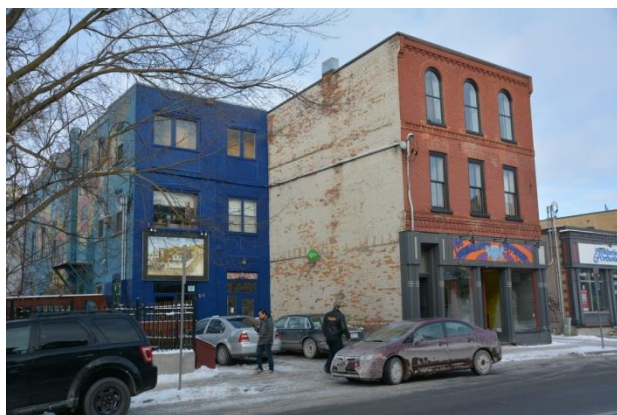
Heritage attributes: Three-storey brick construction; cornice; brackets; rounded upper storey windows; coursing; window surrounds; fenestration; ground floor storefront; continuation of commercial row.



211-213 Hunter Street W

211-213 Hunter Street W was constructed for R.Z. Rogers in 1883 and housed James Halpin's carriage shop, located on the site of an earlier carriage factory. It features a mansard roof with dormer windows and decorative brackets. It is an important contributing structure to the Hunter Street West commercial corridor.

Heritage attributes: Three-storey brick construction; mansard roof; chimney; dormer with rounded windows; brackets; fenestration; ground floor storefront; continuation of commercial row.



212-216 Hunter Street W

212-216 Hunter Street W was constructed in the early 1890s as a commercial property. It features excellent decorative brickwork on courses separating each of its three storeys and is a good example of a late nineteenth century commercial property. In the early twentieth century, it was home to Coughlin Monument Works, a well-regarded local monument business that manufactured graves, monuments and war memorials that were shipped throughout the Peterborough area. It is an important contributing feature of the Hunter Street West commercial corridor.

Heritage attributes: Three-storey brick construction; flat roof; rounded windows; fenestration; corbels; ground floor storefront.



215-221 Hunter Street W

215-221 Hunter Street W was constructed around 1880 for Cornelius Halpin. The lower story contained stores and a carriage way to access the rear of the building, which has been retained. The upper storeys were rental accommodation and a hotel. It is a good example of a late Victorian commercial building and forms an important part of the Hunter Street W commercial corridor where it is both historically and physically linked to its surroundings.



Heritage attributes: Two-storey brick construction; gable roof; dormers with half-timbering; fenestration; fire separation wall; carriage way; ground floor storefronts; continuation of commercial row.

223-225 Hunter Street W

223-225 Hunter Street W was constructed in the late 1880s and used as a commercial building. It is an excellent example of a late Victorian commercial building with a mansard roof and is notable for the decorative polychromatic brick work on the second story. It forms an important part of the Hunter Street W commercial corridor where it is both historically and physically linked to its surroundings.

Heritage attributes: Three-storey red brick construction; mansard roof; dormers with pediment; buff brick coursing; fenestration; ground floor storefront; continuation of commercial row.



247 Hunter Street W

247 Hunter Street W was constructed in the early 1840s and appears on Sanford Fleming's 1846 map of the city. It was originally owned by Oughtry Morrow and later his son, Robert A. Morrow. It is an important early building in Peterborough and a good example of a Regency cottage.

Heritage attributes: One-storey construction; hipped roof; central entrance with transom and sidelights; fenestration; symmetrical massing.



130 Simcoe Street

130 Simcoe Street was constructed for the Bank of Montreal in 1960 and is attributed to architect Eberhard Zeidler. It is a landmark modernist building in Peterborough and occupies a prominent position at the corner of Simcoe and Water Streets. It is notable for its frieze executed in gold mosaic tiles and the book matched panels in black marble on the south and east elevations.

Heritage attributes: Two-storey concrete construction; flat roof; cornice; frieze; marble panels; vertical bands of windows; fenestration; recessed entrance.



167-173 Simcoe Street

167-173 Simcoe Street is a good example of late Victorian commercial building and is comprised of a two-storey section and a three-storey section, the former of which is likely the older section of the building. The three-storey section of this building is notable for its upper storey windows which feature voussoirs with keystone and decorative coursing. It is an important part of the historic landscape of Simcoe Street.

Heritage attributes: Two and three-storey brick construction; flat roofs; fenestration; rounded upper storey windows; voussoirs; keystones; coursing; dentils; ground floor storefront; continuation of commercial row.



172-174 Simcoe Street

172-174 Simcoe Street was constructed in 1888 for Thomas Bradburn and was the CPR hotel until 1908, replacing an earlier hotel on the same site which had been lost to a fire. It later became the King George Hotel. It is a unique building in downtown Peterborough for its use of red and buff brick on the upper storeys and is an important part of the historic streetscape of Simcoe Street.

Heritage attributes: Three-storey buff brick construction; red brick details including voussoirs; mansard roof; rounded upper storey windows; decorative

brickwork; carriageway; ground floor storefront; continuation of commercial row.



195 Simcoe Street

195 Simcoe Street is a good example of an early twentieth century commercial building. It is significant as the site of Duffus Garage and Ford Dealership beginning in 1914. It was owned and operated by J.J. Duffus who served as Peterborough's mayor, a federal MP and as a Senator in the mid-twentieth century.

Heritage attributes: Two-storey brick construction; flat roof; cornice; brackets; fenestration; ground floor storefront.



207 Simcoe Street

The property on which 207 Simcoe Street is constructed was granted to John Beatty in 1826 and, by the 1851 census, the Beattys had erected a brick house on this site, which is most likely this building. A similar structure also appears on the 1846 Sandford Fleming map in this location. It is a good example of a Regency cottage with a hipped roof and symmetrical front elevation and a very early brick house in Peterborough.

Heritage attributes: One-storey brick construction; hipped roof; central entrance with sidelights; entrance porch with pediment and decorative woodwork; symmetrical massing.



209 Simcoe Street

209 Simcoe Street was constructed around 1888 and is frame construction clad in brick. It was occupied by barber Fred Potvin. It is a good example of a late Victorian bay and gable house in the transitional area of Simcoe Street as it moves away from the downtown commercial core.

Heritage attributes: Two-storey construction; buff brick; hipped roof; projecting bay; gable with shingles and central window; chimney; fenestration; entrance; asymmetrical massing.



247-251 Simcoe Street

247-251 Simcoe Street may date to before 1846 as a building of this size appears in on Sanford Fleming's map in this location. It also appears on the 1851 and 1861 censuses. It is a frame building and was later clad in brick, likely around 1880.

Heritage attributes: Two-storey frame construction; hipped roof; central entrance; symmetrical composition; fenestration; classical details.



164-168 Charlotte Street

164-168 Charlotte Street was constructed in the early 1890s and is a good example of late nineteenth century Italianate commercial architecture and served as a grocery store from its construction through most of the first half of the twentieth century. It is notable for the dog-tooth coursing along the bracketed cornice. The building is an important feature of the Charlotte Street streetscape.

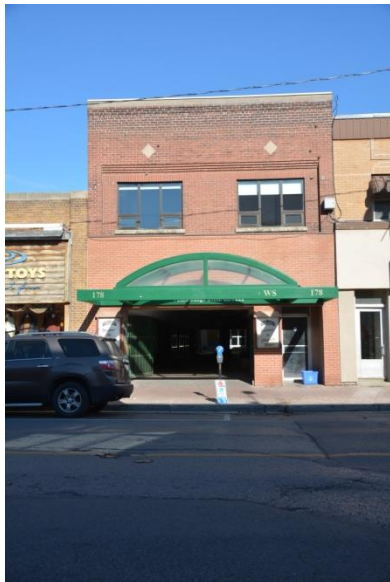
Heritage attributes: Three-storey red brick construction; flat roof; cornice; brackets; decorative brickwork; voussoirs; rounded windows; fenestration; ground floor storefront; carriage way; continuation of commercial row.



171-175 Charlotte Street – White House Hotel

171-175 Charlotte Street first appears as Whites Hotel in the 1893 City Directory, changing its name to the White House Hotel soon after. It is a good example of a late nineteenth century hotel, of which Peterborough had many during the late nineteenth and early twentieth century. It is the only one of Peterborough's nineteenth century hotels which retains its original name and function.

Heritage attributes: Three-storey brick construction; flat roof; fenestration; ground floor storefront; continuation of commercial row.



178 Charlotte Street

178 Charlotte Street is a good example of an early twentieth century commercial building. It uses restrained decoration in a two-storey storefront that is well integrated into the historic Charlotte Street commercial streetscape. The historic upper storey has been retained and the lower storey heavily modified.

Heritage attributes: Two-storey red brick construction; flat roof; buff brick details; decorative brickwork; fenestration; continuation of commercial row.



180 Charlotte Street

180 Charlotte Street is a unique example of commercial architecture in Peterborough. It features Art Deco details above the storefront which is rare for the city. It is an important part of the Charlotte Street streetscape.

Heritage attributes: One-storey buff brick construction; flat roof; Art Deco decorative elements; ground floor storefronts; continuation of commercial row.



181-187 Charlotte Street

181-187 Charlotte Street was constructed around 1911 and is a good example of early twentieth century commercial architecture. It was originally the home of J. Mendel Greene Music Co. which operated in the building until 1930. Although the building had been clad, it retains its cornice and horizontal elements which characterized commercial architecture during this period.

Heritage attributes: Two-storey brick construction; flat roof; cornice; fenestration; ground floor storefronts; continuation of commercial row.



182-184 Charlotte Street

182-184 Charlotte Street is a good example of an early twentieth century commercial block. It is notable for the use of ornate brickwork on the second storey and keystones above the windows. It is a contributing property to the commercial landscape of Charlotte Street.

Heritage attributes: Two-storey buff brick construction; flat roof; decorative brickwork; fenestration; voussoirs with keystones; ground floor storefront; continuation of commercial row.



186-192 Charlotte Street

186-192 Charlotte Street was constructed in 1886 and served as the Snowden Hotel. During the late nineteenth and early twentieth centuries, it was a well-known and popular hotel in the city and was described in a 1908 supplement to the Peterborough Examiner as "one of the leading hotels in Peterborough." It formed part of a collection of hotels along Charlotte Street. Remodelled in the early twentieth century as the Charlebond Building, it remains an important part of Charlotte Street's commercial streetscape and the continuous row of commercial buildings on the north side of the street.

Heritage attributes: Three-storey buff brick construction; flat roofs; parapet;

cornice; bay windows; recessed entrance; ground floor storefronts; fenestration; continuation of commercial row.



194-196 Charlotte Street

194-196 Charlotte Street was likely constructed in the late 1890s and is a good example of a late nineteenth-century three-storey commercial block. Its upper two stories feature rounded windows on the top storey, brick pilasters, and decorative brickwork. It is a continuation of the commercial streetscape along the north side of Charlotte Street and is an important contributing resource to the downtown area.

Heritage attributes: Three-storey red brick construction; flat roof; decorative brickwork; corbels; rounded upper storey windows; fenestration; ground floor storefront; continuation of commercial row.



200-202 Charlotte Street

200-202 Charlotte Street may be the oldest brick building in Peterborough. Constructed around 1842, it originally served as the Globe Hotel, a small but early downtown hotel. As originally constructed, it was composed of three bays with a parapet gable. The property underwent renovations to update the front façade and allow for storefronts on the ground storey of the building. It is an important early building in Peterborough and contributes to the overall character of Charlotte Street.

Heritage attributes: Two-storey red brick construction; gable roof; decorative brickwork; pilasters; fenestration; ground floor storefront; continuation of commercial row.



206-208 Charlotte Street

206-208 Charlotte Street was constructed in the mid-1880s as rental properties for Thomas Harper and John Thompson. They are good examples of late nineteenth century rental properties and contribute to the commercial character of the Charlotte Street landscape.

Heritage attributes: Two-storey brick construction; mansard roof; fenestration; buff brick details on 208; fire separation wall; ground floor storefronts; continuation of commercial row.



140 King Street

140 King Street, also known as the J.J. Turner building, is a landmark building on King Street between George and Water Streets in Peterborough's downtown core. J.J. Turner was born in England and emigrated to Port Hope before setting up his sail and tent making business in the 1870s. He moved to Peterborough in 1883 and the building at 140 King Street was constructed in the mid-1880s as his factory, offices and sales room. It is an excellent example of late Victorian industrial architecture and one of the few surviving building of this type on the south end of Peterborough's downtown where there was once a significant number of industrial structures.

Heritage attributes: Four-storey red brick construction; flat roof; cornice; brackets; corbels; fenestration; pilasters; ground floor entrances; rusticated foundation.



231 King Street

231 King Street was constructed in 1909 and was owned by Nora Shevlin, a widow who boarded women at the house. It is a good example of an Edwardian Classical front gable house. It retains the shingling in both its front and side gables, as well as the tripartite window with decorative moulding on the front of the building.

Heritage attributes: Two-and-a-half-storey red brick construction; gable roof; front and side gables with shingles; tripartite window with moulding; fenestration; bay windows; entrance.



164 Sherbrooke Street

164 Sherbrooke Street is an excellent example of early twentieth century industrial architecture and one of few surviving industrial buildings in downtown Peterborough. Beginning in 1909, it was home to the German Card Manufacturing Company, later Turner Brothers Card Manufacturing, a cardboard and mat board factory operated by brothers Marshall and Leslie Turner. It retains a number of important features characteristic of early twentieth century industrial architecture including the integration of decorative brick work and the large multi-pane windows on the western section of the building. It is an important example of industrial architecture in Peterborough and a contributing property to the historic landscape of Sherbrooke Street.

Heritage attributes: Two-storey brick construction; flat roof; one-storey addition; large multi-pane windows; parapet; decorative brickwork; fenestration; entrance.



187 Sherbrooke Street

187 Sherbrooke Street was constructed in the late 1890s and is a good example of a vernacular Victorian residential building with a gable end. It is a contributing feature to the historic landscape of this section of Sherbrooke Street.

Heritage attributes: One-and-a-half-storey construction; gable roof; fenestration.



191 Sherbrooke Street

191 Sherbrooke Street was constructed in 1903 and is a good example of a Queen Anne style house constructed in Peterborough. Distinctive features on this property include its asymmetrical massing and front projecting gable, the decorative brackets at the edge of the gable, and the moulded brick pilasters. It maintains and supports the historic residential character of this part of Sherbooke Street.

Heritage attributes: Two-storey red brick construction; hipped roof; projecting gable; brackets; pilasters; decorative brickwork; windows with transoms; verandah; columns; entrance.



195 Sherbrooke Street

195 Sherbrooke Street was constructed in 1902 and is a good example of a vernacular hipped roof worker's house from the turn of the twentieth century. It was owned by John Gillespie, an engineer at the Hamilton Foundry. It is a contributing property to the historic landscape of Sherbrooke Street.

Heritage attributes: Two-storey red brick construction; hipped roof; fenestration; offset entrance; porch; columns.



199 Sherbrooke Street

199 Sherbrooke Street was constructed around 1913 and is an example of an Edwardian front gable house. It retains its gable window with decorative surround. It was originally owned by John Gillespie, an engineer at the Hamilton Foundry who also owned the property next door at 195 Sherbrooke Street. It is a contributing property to the historic landscape of Sherbrooke Street.

Heritage attributes: Two-storey red brick construction; gable roof; front gable; central window and moulding; fenestration.



205 Sherbrooke Street

205 Sherbrooke Street was constructed in the late 1890s and is a good example of a Queen Anne style house in Peterborough, although it has some later additions. It is a contributing feature of the historic landscape of Sherbrooke Street.

Heritage attributes: Two-storey red brick construction; hipped roof; projecting gable; decorative brickwork; pilasters; entrance porch; columns; brick piers; fenestration.



211 Sherbrooke Street

211 Sherbrooke Street was constructed around 1904 for William Comstock. Comstock was the oldest son of Aaron Comstock who established the Comstock Funeral Home in Peterborough and joined his father in the business. The house is a good example of an Edwardian residence and features a unique rounded entrance porch with classical columns and an entablature with dentils. It is a contributing feature to this historical landscape of Sherbrooke Street and is important through its connection to a longstanding and well-known Peterborough family business.

Heritage attributes: Two-storey red brick construction; hipped roof; front gable; fenestration; windows with transoms; entrance with transom; rounded entrance work; columns; entablature; stone foundation.



219 Sherbrooke Street

219 Sherbrooke Street was constructed in 1907 for Manson Comstock. Comstock was the youngest son of Aaron Comstock who established the Comstock Funeral Home in Peterborough. Manson Comstock began his career working at the Peterborough Hardware Company but had joined his father's business by 1912. 219 Sherbrooke Street is a good example of an Edwardian residence in Peterborough. It is a contributing structure to the historic landscape of Sherbrooke Street and is important in its connection to a longstanding and well-known Peterborough family business.

Heritage attributes: Two-storey red brick construction; hipped roof; chimney; front gable; fenestration; stone foundation.



225-227 Sherbrooke Street

225-227 Sherbrooke Street was likely constructed in the mid-nineteenth century, although its exact date of construction is not known. It may be the house that appears in this location on the 1846 Sandford Fleming map of Peterborough, which would make it one of the early brick houses in Peterborough. It is an important early example of vernacular building in Peterborough.

Heritage attributes: One-and-a-half-storey red brick construction; gable roof; front gable; central entrances; fenestration; verandah.



256 Aylmer Street N

256 Aylmer Street N is a good example of early twentieth century semi-detached worker's housing. It is typical of multi-residential housing types of this period which generally featured shallow verandahs or entrance porches across the front of the house, offset entrances on the units and hipped roofs. It is a contributing feature to the historic landscape of Aylmer Street.

Heritage attributes: Two-storey red brick construction; hipped roof; chimneys; fenestration; symmetrical massing; central entrances; shallow verandah; brick piers.



260 Aylmer Street N

260 Aylmer Street N was constructed around 1905 and is a good example of an Edwardian front gable house in Peterborough. The house has the characteristic shingles gable on the street facing elevation of this style. It is a contributing property to Aylmer Street's historic streetscape.

Heritage attributes: Two-storey brick construction; gable roof; side gable; front gable with central window and shingles; fenestration; entrance with transom.



282 Aylmer Street N

282-284 Aylmer Street N may have been constructed by 1858, but was certainly in place by 1875 when it was a hotel. It became the Montreal House in the late nineteenth century and remained under that name until 2013. Although renovated over the years, the property still retains its rectangular form with a steeply pitched dormer on the west elevation which includes a wooden finial. It is an important early hotel in Peterborough and a local landmark.

Heritage attributes: Two-and-a-half-storey brick construction; gable roof; chimneys; central gable; finial; fenestration; entrances.



300 Aylmer Street N

300 Aylmer Street N is an excellent example of an Edwardian Classical front gable house. Constructed in 1914, it retains its characteristic shingled front gable with central window and also features an oriel window with matching shingles. It is a good example of this housing type in Peterborough and is an important feature of the historic fabric of Aylmer Street.

Heritage attributes: Two-storey red brick construction; gable roof; front gable with shingles; central tripartite window; oriel window; windows with transoms; offset entrance; entrance porch.



456-458 Aylmer Street N

This double tenement was erected in the mid-1880s for William J. Hall. It retains many decorative features including the trellage trim on the front verandah and decorative brackets. It is a good example of late nineteenth-century semi-detached housing.

Heritage attributes: Two-storey brick construction; hipped roof; rounded upper storey windows; fenestration; symmetrical massing; bay windows; entrances with transoms; entrance porches with decorative woodwork; brackets.



464 Aylmer Street N

464 Aylmer Street N is the former William Metheral Carriage shop which was located on this site beginning in 1858. The current building was constructed in 1883, but integrated part of an older structure dating back to the late 1850s. It holds heritage value as an early surviving commercial building in downtown Peterborough and part of the row of surviving properties belonging to the Meatheral family along Aylmer Street.

Heritage attributes: Two-storey construction; hipped roof; symmetrical massing; fenestration.



473 Aylmer Street N

473 Aylmer Street N is a good example of an Edwardian foursquare house, a popular residential building style in Ontario in the early twentieth century. This property demonstrates some of the characteristic features of this style including the hipped roof, small central dormer, and tripartite window beside an offset entrance on the ground floor. This building contributes to the historic landscape of Aylmer Street.

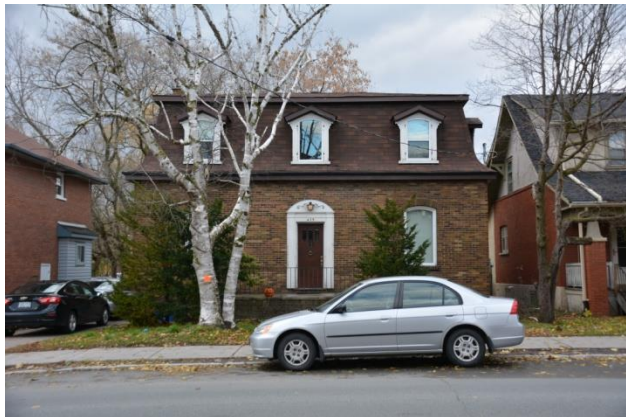
Heritage attributes: Two-storey red brick construction; hipped roof; central dormer; fenestration; entrance.



474-480 Aylmer Street N

474-480 Aylmer Street N is an excellent example of a late Victorian terraced house in the Italianate style. It was constructed for the Metheral family around 1887. Two brothers, Joseph and Wilton, occupied two of the units and the others were rented out. It also holds heritage value as part of the row of surviving properties belonging to the Meatheral family along Aylmer Street.

Heritage attributes: Two-storey red brick construction; hipped roof; projecting bays; brackets; fenestration; buff brick voussoirs; buff brick coursing; stone foundation; symmetrical composition; upper storey porches.



475 Aylmer Street N

475 Aylmer Street N was likely constructed in the early 1880s. It is believed to have been moved to this location from the corner of Brock and Bethune Street in the 1920s. It is a unique example of a centre plan house with a mansard roof.

Heritage attributes: Two-storey construction; mansard roof; dormers; central entrance; fenestration; symmetrical massing.



477 Aylmer Street N

477 Aylmer Street N was constructed around 1926 and is a good example of a 1920s bungalow. This housing type became popular in Peterborough during this period and is characterized by the integrated verandah, large front wall dormer and broad low pitched roof.

Heritage attributes: One-and-a-half-storey brick construction; gable roof; front wall dormer; fenestration; integrated verandah; brick piers.



485-495 Aylmer Street N

485 Aylmer Street N is an excellent and rare example of a Second Empire terrace in Peterborough. The terrace features a mansard roof with dormers, bay windows and a verandah with decorative woodwork across the front of the building. It is an important and extremely well-executed example of late nineteenth century multi-residential housing.

Heritage attributes: Two-storey red brick construction; mansard roof; dormers; bay windows; verandah with decorative woodwork; fenestration; entrances.



492-494 Aylmer Street N

494 Aylmer Street N was constructed prior to 1875 for Henry Hartley. 492 Aylmer Street was added to the property in the mid-1880s and 494 Aylmer Street, a frame structure, was clad in brick to match the addition. The property is a good example of late Victorian multi-residential housing.

Heritage attributes: Two-storey red brick construction; mansard roof; dormers; entrances with transoms; fenestration.



497 Aylmer Street N

497 Aylmer Street N was constructed in the late 1860s as a single family home. It is a good example of a house constructed on a Georgian three-bay plan. It was converted into a multi-residential property in 1890.

Heritage attributes: Two-storey frame construction; hipped roof; weatherboard; central rounded window; symmetrical composition; fenestration; verandah.



498 Aylmer Street N

498 Aylmer Street N is a frame house that was constructed prior to 1870. It is a good example of vernacular residential design from the mid-nineteenth century and features distinctive eave returns.

Heritage attributes: One-and-a-half-storey frame construction; gable roof; return eaves; chimney; fenestration; offset entrance.



500 Aylmer Street N

500 Aylmer Street N is a solid brick structure constructed in the early 1880s. It is a good example of late nineteenth century vernacular residential design and features a box cornice and significant amounts of retained decorative woodwork.

Heritage attributes: One-and-a-half-storey buff brick construction; gable roof; fenestration; offset entrance with transom; verandah with decorative woodwork; brick piers.



501 Aylmer Street N

501 Aylmer Street N appears on the 1875 Bird's Eye View map of Peterborough and was owned by William Yelland. It was constructed at least as early as 1870 but may date to the 1860s. It is a good example of Victorian vernacular residential construction and features rounded upper story windows on the east elevation.

Heritage attributes: One-and-a-half-storey brick construction; gable roof; rounded upper storey windows; fenestration; offset entrance.



504 Aylmer Street N

504 Aylmer Street N is a good example of an Ontario Gothic cottage constructed in brick. It was likely constructed in the early 1880s and retains a rounded arched window in the centre gable and decorative trim along the eaves.

Heritage attributes: One-and-a-half-storey brick construction; gable roof; central gable; rounded window; bargeboard; central entrance with sidelights; fenestration; entrance porch.



505-507 Aylmer Street N

This brick house N was constructed as a semi-detached rental property for William Yelland in the early 1880s. It is a distinctive design featuring two pointed gables with rounded windows and radiating buff brick voussoirs.

Heritage attributes: One-and-a-half story red brick construction; gable roof; gables on front elevation; rounded windows; buff brick voussoirs; fenestration; central entrances; entrance porch.



508 Aylmer Street N

508 Aylmer Street N was constructed prior to 1870 and likely dates to the early to mid-1860s and is a good example of an Ontario Gothic cottage from this period. It is of wood construction covered in plaster and retains original elements including the rounded arched window and wooden finial in the centre gable on the verandah.

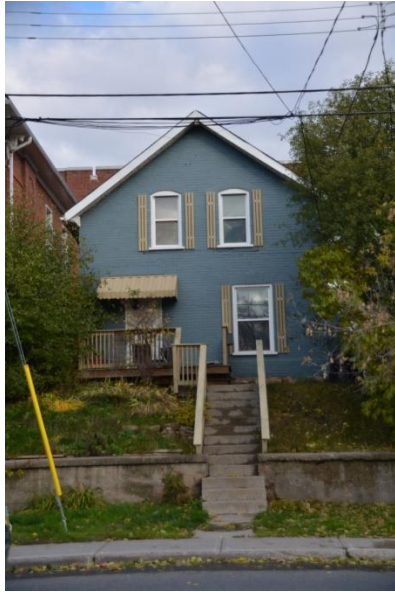
Heritage attributes: One-and-a-half storey frame construction; gable roof; central gable; rounded window; finial; central entrance; verandah; fenestration.



511 Aylmer Street N

511 Aylmer Street N is a good example of a 1920s bungalow in Peterborough. Constructed around 1925, it features the key elements associated with this housing type which became popular in Peterborough during this period. These include: an integrated verandah; a wide central dormer and broad sloping roof.

Heritage attributes: One-and-a-half-storey red brick construction; gable roof; front wall dormer; fenestration; integrated verandah; offset entrance; brick piers.



512 Aylmer Street N

512 Aylmer Street N is a good example of a Victorian vernacular gable front house. Likely built in the early 1880s, it is of solid brick construction. It is an important contributing feature to the historic landscape of Aylmer Street.

Heritage attributes: One-and-a-half-storey brick construction; gable roof; fenestration; offset entrance; stone foundation.



514-516 Aylmer Street N

514-516 Aylmer Street N is an important example of a late nineteenth century bay and gable semi-detached house. There are few examples of this housing type in Peterborough. It retains many original features of this style including the shingled gables, brackets and ornate second storey porch between the two units.

Heritage attributes: Two-storey red brick construction; hipped roof; projecting bays with gable; shingles; central windows; brackets; upper storey porch with decorative woodwork; central entrances; symmetrical composition; stone foundation.



531 Aylmer Street N

531 Aylmer Street N is a rare example of a Edwardian Classical gable front semi-detached house. While this residential style is very common in Peterborough, the vast majority of examples are single family homes. The property retains original feature important to the Edwardian Classical style including the shingled gables with central windows; bowling pin columns and pediment.

Heritage attributes: Two-storey red brick construction; hipped roof; front gables; shingles; central windows with moulding; bay windows; fenestration; entrances with transoms; windows with transoms; verandah; bowling pin columns; piers; pediment; symmetrical composition.



535 Aylmer Street N

535 Aylmer Street N was constructed in the 1880s and occupied by William Belleghem of the Belleghem family which operated the furniture dealership and undertaking business at 188 Hunter Street West. It is a good example of a Queen Anne style residence in Peterborough and includes features such as a front bay and gable, return eaves, windows with stained glass transoms and an offset entrance porch. It is an important feature of the turn of the century neighbourhood on the section of Aylmer Street N north of McDonnell Street.

Heritage attributes: Two-storey red brick construction; hipped roof; projecting gable; dormers; return eaves; windows with stained glass transoms; fenestration; offset entrance with transom; entrance porch; piers; bowling pin columns; pediment; stone foundation.



541 Aylmer Street N

541 Aylmer Street N is a good example of an Edwardian Classical front gable house. This property was constructed around 1909 for Percy Rutherford, a real estate agent. It has the characteristic shingled front gable of this housing type and also features a front verandah with squared columns and an entablature. It is a contributing feature to the historic character of the turn of the century neighbourhood on the section of Aylmer Street N north of McDonnell Street.

Heritage attributes: Two-storey red brick construction; gable roof; front gable with shingles; tripartite window with moulding; windows with transoms; fenestration; entrance with transom; verandah; brick piers; square columns; entablature.



542 Aylmer Street N

542 Aylmer Street N is a good example of an Edwardian Classical front gable house. It was constructed in 1910 and retains the characteristic features of this housing type including the shingled gable with central window, verandah with columns, and upper storey bay window. It is a contributing feature to the historic character of the turn of the century neighbourhood on the section of Aylmer Street N north of McDonnell Street.

Heritage attributes: Two-storey red brick construction; gable roof; front gable with shingles; double window with moulding; bay window; windows with transoms; entrance with transom; verandah; piers; bowling pub columns.



544 Aylmer Street N

544 Aylmer Street N was constructed in 1908 and is a good example of an Edwardian front gable house. It has the characteristic shingled front gable of this style and a verandah across the front of the house. It is a contributing feature to the historic character of the turn of the century neighbourhood on the section of Aylmer Street N north of McDonnell Street.

Heritage attributes: Two-storey red brick construction; gable roof; front gable with shingles; central window; fenestration; verandah; square columns.



545 Aylmer Street N

545 Aylmer Street N was constructed around 1925 and is a good example of a 1920s bungalow. It features the key elements of this style of house which became popular in Peterborough during this period. These features include: an integrated verandah, a front facing dormer, and low pitched roof. It is unique in that the entrance of the house is in the centre of the building, which is uncommon for this housing type, and that the verandah extends only across half of the house with an interior window on the southern side.

Heritage attributes: One-and-a-half-storey brick construction; gable roof; chimney; front wall dormer; fenestration; integrated verandah.



546 Aylmer Street N

546 Aylmer Street N was constructed in the late 1880s for Benjamin Shortley as a rental property alongside its nearly identical neighbour at 548 Aylmer Street N. It has a bay and gable on the street facing side with ornate brackets and a verandah and entrance on the side with decorative wooden elements. It is a good example of residential design from the 1880s.

Heritage attributes: Two-storey red brick construction; hipped roof; chimney; projecting bay with gable; shingled gable; semi-circular window; brackets; fenestration; lintels; lug sills; side entrance; verandah with decorative woodwork.



550 Aylmer Street N

550 Aylmer Street N was constructed in 1882 for Benjamin Shortley. He lived in the house until 1917. It is a good example of residential construction from the early 1880s. It is a contributing feature to the historic character of the turn of the century neighbourhood on the section of Aylmer Street N north of McDonnell Street.

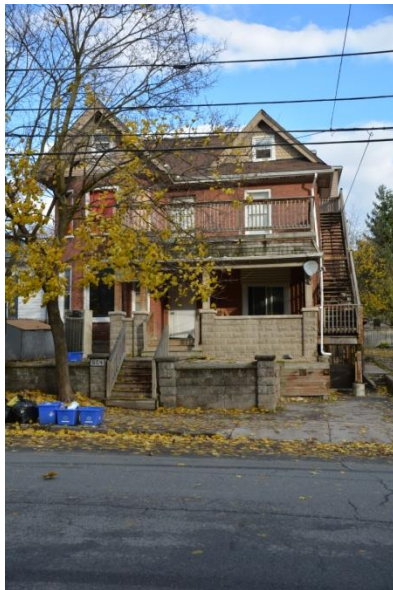
Heritage attributes: Two-storey brick construction; hipped roof; fenestration; entrance.



551 Aylmer Street N

551 Aylmer Street N was constructed between 1875 and 1883 and owned by Joseph Cobb. It is clad in brick and is a good example of late Victorian vernacular residential design. It is a contributing feature to the historic character of the turn of the century neighbourhood on the section of Aylmer Street N north of McDonnel Street, although built earlier than many other properties in the immediate area.

Heritage attributes: Two-storey buff brick construction; hipped roof; fenestration; wide eaves; offset entrance with sidelights; verandah; square columns; piers.



554 Aylmer Street N

554 Aylmer Street N was constructed around 1900 and is a good example of a bay and gable house with classical elements. The house has a two-storey bay with a single gable on the south end of the front elevation as well as a second gable on the north end. The house was owned by G.E. Whiten, a local photographer, and several members of his extended family also boarded there. It is a contributing feature to the historic character of the turn of the century neighbourhood on the section of Aylmer Street N north of McDonnel Street.

Heritage attributes: Two-storey red brick construction; hipped roof; gables with shingles and central windows; projecting bay and gable; fenestration; verandah; entrance.



556 Aylmer Street N

556 Aylmer Street N appears on Sandford Fleming's 1846 Map of Peterborough and is a good example of a mid-nineteenth century Regency cottage. It retains a hipped roof and front entrance porch and is notable for its front entrance which features side and transom lights with decorative moulding. It was owned by the Lince family from at least the early 1850s until the late 1870s.

Heritage attributes: One-storey construction; hipped roof; symmetrical massing; central entrance with transom and sidelights; entrance porch; fenestration; shutters.



557 Aylmer Street N

557 Aylmer Street N was constructed around 1925 for Arthur Harris, a local druggist. It is an interesting example of the shift towards Revival styles taking place in Peterborough during this period. While integrating features of the Edwardian classical front gable style, this property has a smaller gable, a entrance porch with paired columns and a tripartite front window which signal the changing architectural tastes of the mid-1920s. It is a contributing feature to the historic character of the turn of the century neighbourhood on the section of Aylmer Street N north of McDonnell Street.

Heritage attributes: Two-storey red brick construction; hipped roof; chimney; projecting gable with shingles and window; banked windows; fenestration; asymmetrical massing; offset entrance; entrance porch; brick piers; grouped columns; entablature.



559 Aylmer Street N

559 Aylmer Street N is a unique example of a turn-of-the-century residence in Peterborough. The design makes use of classical features that were becoming popular during this period including the hipped roof with small dormer that became a key feature of Edwardian and Revival styles, a shallow two storey bay and an arched recessed entrance with a keystone. It is a unique property in Peterborough and a contributing feature to the historic character of the turn of the century neighbourhood on the section of Aylmer Street N north of McDonnell Street.

Heritage attributes: Two-storey red brick construction; hipped roof; central dormer chimney; two-storey bay; fenestration; lintels; lug sills; rustication; recessed entrances with arch and keystone; stone foundation.



253 Bethune Street

253 Bethune Street is a good example of vernacular worker's housing from the late nineteenth century. It was constructed around 1888 and occupied by Richard Waram who worked as a car repairman for the Grand Trunk Railway which was located nearby. It has an important relationship to the historic landscape and rail history of Bethune Street through its early occupant.

Heritage attributes: One-and-a-half-storey brick construction; gable roof; fenestration; entrance with transom; verandah; bowling pin columns; brick piers.



257 Bethune Street

253 Bethune Street is a good example of vernacular worker's housing from the late nineteenth century. It was constructed around 1888 and occupied by Alexander McNeilly who worked as a conductor for the Grand Trunk Railway which was located nearby. It has an important relationship to the historic landscape and rail history of Bethune Street through its early occupant.

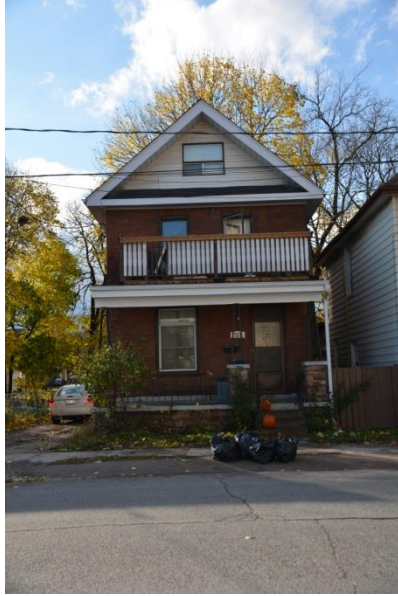
Heritage attributes: One-and-a-half-storey brick construction; gable roof; chimney; fenestration; entrance with transom; verandah; brick piers.



263 Bethune Street

This house was constructed prior to 1858 and was owned and occupied by Robert Robertson. Robertson was a carpenter, and may have constructed the house, but, by the mid-1870s, was working for William Hamilton Manufacturing Company. It is a good example of vernacular worker's housing from the mid-nineteenth century.

Heritage attributes: One-and-a-half-storey frame construction; gable roof; central gable; window with surround; fenestration; entrance with sidelights; entrance porch with decorative woodwork.



265 Bethune Street

265 Bethune Street is a good example of an Edwardian front gable house. Constructed in 1914, it was owned by a succession of working class occupants who were employed in local businesses. It is a contributing feature to the historic landscape of Bethune Street.

Heritage attributes: Two-storey red brick construction; gable roof; front gable with central window; fenestration; windows with transoms; entrance with transoms; verandah.



267 Bethune Street

267 Bethune Street was constructed in 1905 and was originally occupied by Alexander McIntosh, a labourer at the Central Milling Company, located relatively nearby at the corner of George Street North and Dalhousie Street. It is a good example of an early twentieth century worker's house and is a contributing feature to the overall landscape of Bethune Street.

Heritage attributes: Two-storey construction; hipped roof; fenestration; offset entrance.



273 Bethune Street

273 Bethune Street is a good example of a hipped roof vernacular dwelling constructed in the early twentieth century. Completed in 1911, it was originally occupied by William H. Anderson, a teamster, giving it an important connection to Bethune Street's railway history. It is a good example of working class housing in Peterborough during this time and is a contributing property to the overall streetscape.

Heritage attributes: Two-storey red brick construction; hipped roof; windows with transoms; fenestration; offset entrance; verandah; brick piers.



277 Bethune Street

277 Bethune Street was occupied by Joseph Buller, a member of the local militia, from at least 1865 to 1890. It was originally a frame building but was clad in brick when a rear addition was constructed, probably in the late nineteenth century. It is a good example of mid-nineteenth century vernacular housing.

Heritage attributes: Two-storey red brick construction; gable roof; fenestration; entrance with transom; hood above entrance with decorative woodwork; stone foundation.



293-303 Bethune Street

293-303 Bethune Street was constructed around 1894 and is a good example of late nineteenth century terraced housing. Primarily occupied by individuals and families employed in Peterborough industries and businesses during this period, its historic occupants reflects the overall demographic of this area of Peterborough and includes owner-occupants, renters and boarders. It is contributing property to the historic character of Bethune Street.

Heritage attributes: Two-storey red brick construction; hipped roof; fenestration; offset entrances in each unit; stone foundation.



307 Bethune Street

307 Bethune Street is a brick house constructed in the late 1880s as a rental unit for William Stevenson. It was occupied by William Brundette worked as the station agent for the Grand Trunk Railway as the station, at the time, was directly across the road. It is a good example of late nineteenth century housing with Italianate features, including the wide eaves and two-storey bay. It has an important relationship to the historic landscape and rail history of Bethune Street through its early occupant.

Heritage attributes: Two-storey buff brick construction; hipped roof; two-storey projecting bay; fenestration; stone foundation; wide eaves.



309 Bethune Street

This house was constructed around 1890 and owned by James Montgomery, a local carpenter. It is a good example of late nineteenth century vernacular housing and contributed to the overall historic streetscape of Bethune Street.

Heritage attributes: Two-storey buff brick construction; hipped roof; rounded upper storey windows; voussoirs; entrance with transom and sidelights; fenestration.



313-315 Bethune Street

313-315 Bethune Street is a good example of a late nineteenth century semi-detached dwelling constructed in the Italianate style. It was constructed for James Stevenson in the mid-1880s and rented out. It is notable for the return eaves and pebbledash finish on the gable ends of the two symmetrical bays. The pebbledash finish is actually made from pieces of porcelain which may have come from the nearby plant which manufactured porcelain housings from CGE, giving it an important connection to Peterborough's wider industrial history.

Heritage attributes: Two-storey red brick construction; hipped roof; projecting gables; return eaves; pebbledash finish; central windows; rounded upper storey windows; buff brick voussoirs; upper storey porch with decorative woodwork; central entrances; symmetrical massing; stone foundation; fenestration.



421 Bethune Street

421 Bethune Street was constructed around 1895 and its first occupant was Edward Graham who worked for the nearby Grand Trunk Railway. Its early occupant gives the property an important connection to Bethune Street's railway history. It is also a good example of a late nineteenth century house constructed in the Queen Anne style and is particularly notable for its window treatments which feature decorative surrounds and transoms.

Heritage attributes: Two-storey red brick construction; hipped roof; projecting gable; rounded windows; windows with stained glass transoms; fenestration; brackets; decorative brickwork; pilasters; offset entrance with transom; asymmetrical massing.



493 Bethune Street

493 Bethune Street was constructed between 1870 and 1875 as worker's housing. It is a good example of Victorian vernacular residential design and has important historical connections to the working class character of the Bethune Street neighbourhood.

Heritage attributes: One-storey frame construction; gable roof; chimney; central entrance; fenestration.



495 Bethune Street

495 Bethune Street was constructed between 1870 and 1875 as worker's housing. It is a good example of Victorian vernacular residential design and has important historical connections to the working class character of the Bethune Street neighbourhood. It also retains a very good example of trellis trim on its front verandah.

Heritage attributes: One-storey frame construction; gable roof; central entrance; fenestration; verandah; trellis trim.



499 Bethune Street

499 Bethune Street was built around 1870 for James Henry. It is a good example of nineteenth century worker's housing located in close proximity to historic local industries, including Toole's Planing Mill which was across the street; an advertisement for the sale of the property in 1876 identified its location near the planing mill as an important feature of the building.

Heritage attributes: One-and-a-half-storey frame construction; gable roof; fenestration; offset entrance; stone foundation.



501 Bethune Street

501 Bethune Street was constructed in 1894 for Tobias Fredenberg, the yard foreman for the Rathbun Lumbering Company in Peterborough. It is a good example of a late Victorian gable roofed vernacular residence. The property is a contributing feature to the historic landscape of Bethune Street.

Heritage attributes: One-and-a-half-storey frame construction; gable roof; fenestration; offset entrance; stone foundation; entrance porch.



505 Bethune Street

505 Bethune Street was constructed in 1895 for Tobias Fredenberg, the yard foreman for the Rathbun Lumbering Company in Peterborough, who sold his property next door at 501 Bethune Street and moved into this property. It is a good example of a late Victorian gable roofed vernacular residence. The property is a contributing feature to the historic landscape of Bethune Street.

Heritage attributes: One-and-a-half-storey red brick construction; gable roof; fenestration; offset entrance; stone foundation; entrance porch.



507 Bethune Street

507 Bethune Street was constructed in 1894 and is a good example of vernacular worker's housing from this period. The house displays the typical hipped roof, offset entrance and front verandah of this housing type. The property is a contributing feature to the historic landscape of Bethune Street.

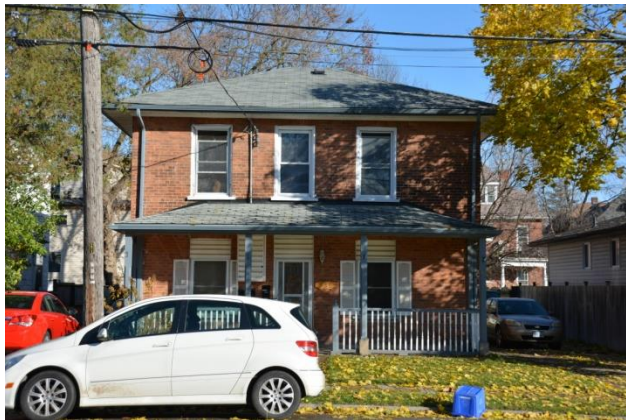
Heritage attributes: Two-storey red brick construction; hipped roof; fenestration; windows with transoms; offset entrance; stone foundation; verandah.



509 Bethune Street

509 Bethune Street was constructed around 1910 and is a typical hipped roof worker's house constructed in the late nineteenth and early twentieth centuries in Peterborough. It is a good example of vernacular residential design and features a hipped roof and verandah. The property is a contributing feature to the historic landscape of Bethune Street.

Heritage attributes: Two-storey construction; hipped roof; fenestration; windows with transoms; offset entrance; verandah.



538 Bethune Street

538 Bethune Street was constructed in 1883 as a rental property for William Yelland. When it was constructed it cost approximately \$1,200 and was completed by local contractor Thomas Thornton. It is a good example of late Victorian vernacular residential design.

Heritage attributes: Two-storey red brick construction; hipped roof; three-bay symmetrical plan; central entrance; fenestration; verandah.



542 Bethune Street

542 Bethune Street was likely constructed in the early 1880s. It is good example of a late nineteenth century Georgian style residence with a three-bay plan, hipped roof and brick quoins. It includes Classical details consistent with the Georgian style including pediments over the doors and ground floor windows.

Heritage attributes: Two-storey brick construction; hipped roof; three-bay symmetrical plan; fenestration; windows with pediments; central entrances with pediments; shutter; rusticated quoins.



543 Bethune Street

543 Bethune Street was constructed in 1908 and is a good example of an Edwardian front gable house. This housing type became very popular in Peterborough during the first decades of the twentieth century and this is a typical example of the style. Notable features include the front gable with central window and verandah. This property is a contributing feature to the historic, residential landscape of this section of Bethune Street.

Heritage attributes: Two-storey red brick construction; hipped roof; front gable with central window; fenestration; windows with transoms; entrance with transom verandah.



545 Bethune Street

545 Bethune Street was constructed in 1909 and occupied by John Johnston, a moulder at G.W. Green and Co. It is a good example of vernacular early twentieth century residential design, integrating elements from the Queen Anne style, including moulded brick work and brackets, into a basic gable front plan. This property is a contributing feature to the historic, residential landscape of this section of Bethune Street.

Heritage attributes: Two-storey red brick construction; gable roof; central window and surround; fenestration; windows with transoms; decorative brickwork; entrance with transom; verandah.



547 Bethune Street

547 Bethune Street was constructed in 1924 and occupied by Gordon Butcher who worked for the *Peterborough Examiner*. The house is a good example of an Edwardian Classical foursquare house and features the typical hipped roof, small central dormer, and front verandah of this type of residential building. This property is a contributing feature to the historic, residential landscape of this section of Bethune Street.

Heritage attributes: Two-storey red brick construction; hipped roof; central dormer; fenestration; offset entrance; verandah; brick piers; square columns; entablature.



548 Bethune Street

548 Bethune Street likely dates to the late 1860s and is of stacked plank construction, a construction method unique to Peterborough. It appears on the 1875 Bird's Eye View map of Peterborough and is a good example of vernacular residential design.

Heritage attributes: Two-storey stacked plank construction; hipped roof; three-bay plan; fenestration; entrance with transom.



549 Bethune Street

549 Bethune Street was constructed around 1907 for Joseph C. Barnard. It is a good example of an Edwardian Classical front gable house, a popular housing type in Peterborough during the early twentieth century. It has the front gable with central window and verandah with columns typical of this housing type. The property is a contributing feature to the historic, residential landscape of this section of Bethune Street.

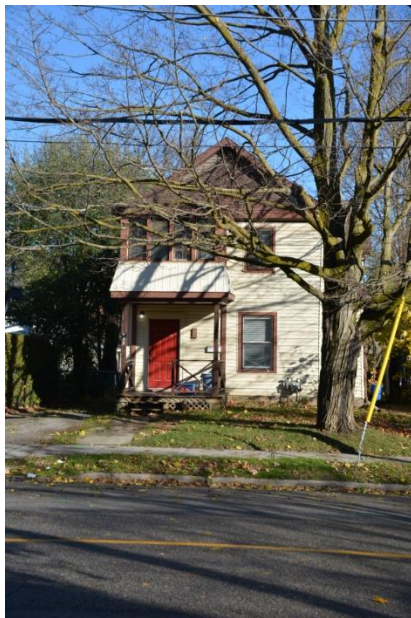
Heritage attributes: Two-storey red brick construction; hipped roof; front gable; tripartite window and moulding; fenestration; entrance; verandah; columns; entablature.



551 Bethune Street

551 Bethune Street was constructed around 1907 and was the home of Joseph Sherwood, a mason, who likely built the house. It is a good example of an early twentieth century vernacular hipped roof house and displays the key characteristics of this popular housing type. These features include its hipped roof, verandah and offset entrance. The property is a contributing feature to the historic, residential landscape of this section of Bethune Street.

Heritage attributes: Two-storey red brick construction; hipped roof; fenestration; windows with transoms; entrance with transom; verandah.



552 Bethune Street

This house was likely constructed prior to 1860 for Charles Stapleton, a local bailiff. It is listed on the 1860 Assessment rolls as being of stacked plank construction. The stacked plank method of construction was used widely in Peterborough during the middle of the nineteenth century due to the large amount of timber being processed by the lumber industry in Peterborough at this time. While relatively common in Peterborough, it is rare elsewhere and 552 Bethune Street is important as an example of this construction method. The property is also an important part of the historic landscape of Bethune Street.

Heritage attributes: Two-storey stacked plank construction; hipped roof front gable; fenestration; sleeping porch; verandah; offset entrance.



555 Bethune Street

555 Bethune Street was constructed in 1907 and occupied by Robert Cook, a machinist and the Hamilton foundry. It is a good example of a vernacular resident from the early twentieth century that integrates some elements of the Queen Anne style into a relatively simple design. These include the asymmetrical massing, entrance porch and dog tooth brick decoration. The property is a contributing feature to the historic, residential landscape of this section of Bethune Street.

Heritage attributes: Two-storey red brick construction; hipped roof; front gable; bargeboard; central window; dog tooth course; fenestration; window with transom; entrance; entrance porch.



559 Bethune Street

559 Bethune Street was constructed in 1904 and is a good example of a hipped roof vernacular worker's house from this period. This housing type was popular in Peterborough in the early twentieth century and its key features include a hipped roof, verandah and offset entrance. The property is a contributing feature to the historic, residential landscape of this section of Bethune Street.

Heritage attributes: Two-storey construction; hipped roof; fenestration; windows with transoms; verandah.