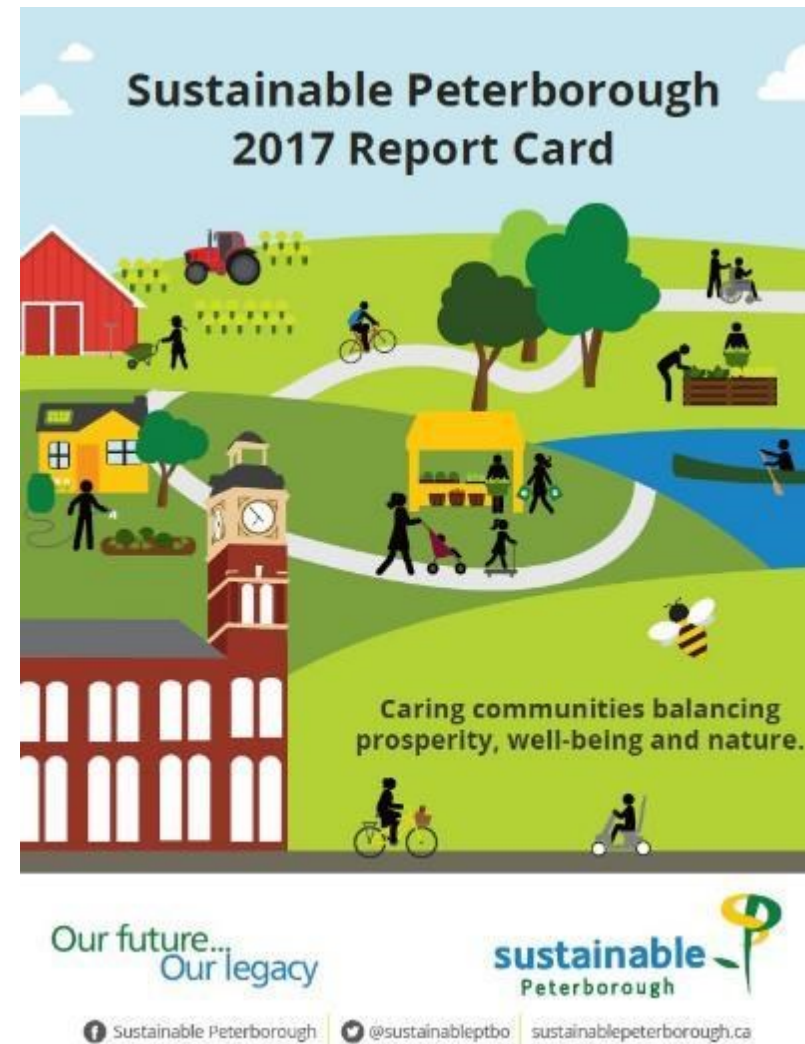


sustainable Peterborough



Annual Report Cards

The 2017 Report Card is our 6th Report Card!



Sustainable Peterborough 2017 Overview



154
Partners

7
Working
Groups

3
Staff
Members

Climate Change Action Plan
updated baseline inventory for 2012-
2015 municipal and community actions
launched **toolbox of resources**

3rd annual
SP Partnership Recognition Event and Awards
held at the Lang Pioneer Village Museum's
Peterborough County Agricultural Heritage
Building

47 Greater
Peterborough Area
residents signed
the CCAP pledge
to reduce their
greenhouse gases.

**Healthy Kids
Community
Challenge**
wrapped up Theme 2,
"Water Does
Wonders", and ran
Theme 3, "Choose to
Boost Veggies and
Fruit"



City of Peterborough's 2017 Key Accomplishments

- City Council enacted two new tree by-laws to regulate the injury or destruction of healthy trees or woodland on private property through a permitting process
- LED retrofit at the Memorial Centre
- Adding more landfill gas collection wells at the landfill
- Launched a free on-line pilot Waste and Consumption Zero Heroes program for elementary school classes



Agriculture and Local Food



Peterborough Pollinators' new initiative, "What a Grocery Store Looks Like Without Bees", at the **Purple Onion Festival**, to raise awareness of the importance of pollinators



Curve Lake First Nation established **2** new community gardens.



11 farmers' markets in the Greater Peterborough Area

48 Student Nutrition Programs

in Peterborough City and County received equipment and fresh produce, helping provide nearly **16,000** students with fresh fruit and vegetables.



Cultural Assets



The County of Peterborough received the Martha Kidd Award from the Peterborough Historical Society for the Jail Park Project.





Economic Development & Employment



sells the work of 26 local artists, and many items made in-house, including blacksmithing items, knitted and crochet wear, honey and beeswax candles



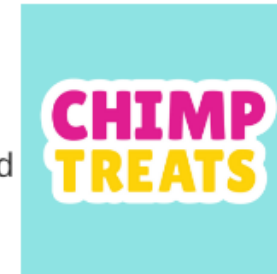
ECONOMIC DEVELOPMENT

won a provincial award from Economic Developers Council of Ontario for its video series that promoted the local food and agriculture sector.

Kawartha Local Marketplace only sells products where the company, manufacturing and materials are located within a **50-kilometer radius from Peterborough.**



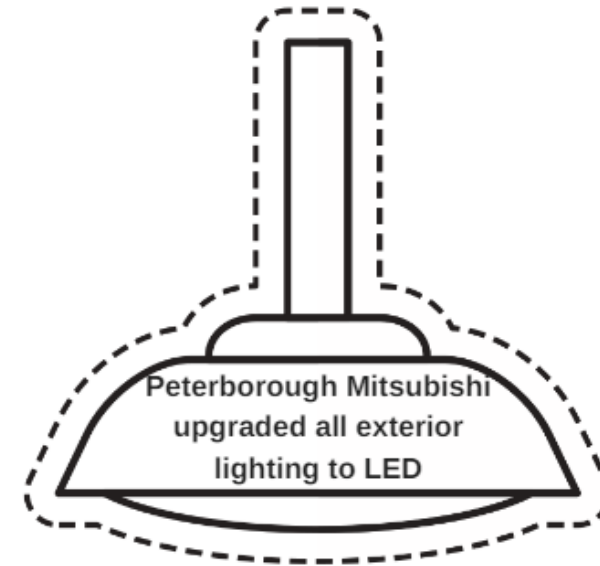
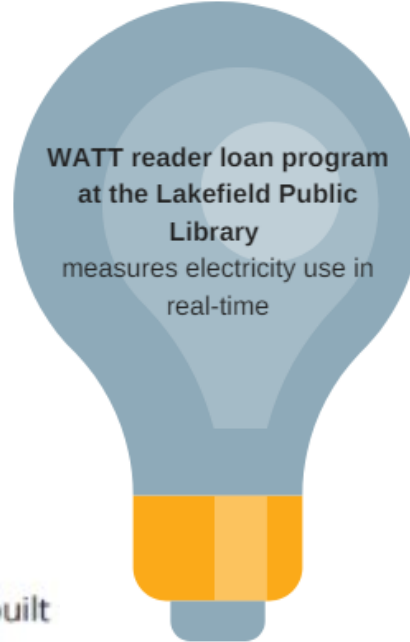
Held a job fair providing jobs for three individuals with intellectual and developmental disabilities.



Energy



WATT reader loan program
at the Lakefield Public
Library
measures electricity use in
real-time



In partnership with
Ryerson University,
Endeavour Centre built
Zero House - a home
that featured **zero**
net energy use, carbon
footprint, fossil fuel use, toxins
and construction waste!

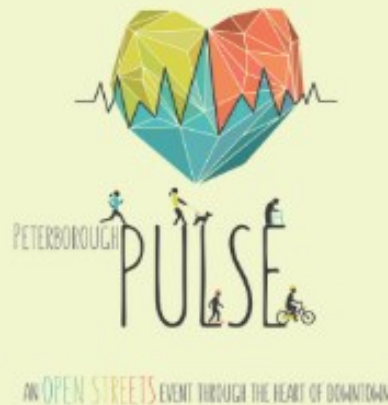


Healthy Communities



over 2,000 people attended!

Over 10,000
people
participated
in
Peterborough
Pulse!



Over 20 First Nations and Non First Nations youth participated in a 6 day canoe trip organized by Camp Kawartha and the Rotary Club of Peterborough- Kawartha, learning about First Nations history and fostering cross cultural understanding



34 educators

30 Childcare Supervisors trained in the You're the Chef program
over 100 children participated

Land Use Planning



City of
Peterborough

Official Plan Review



The Municipality of Trent Lakes purchased a vacant lot in the centre of Buckhorn on the shoreline of Buckhorn Lake and Lock 31, to be preserved as parkland.



New Official Plan



Natural Assets



25 Monarch butterflies were reared, tagged and released at GreenUP's Ecology Park



Three Sisters created over **30** bee hotels made with 100% re-purposed materials



KAWARTHA LAND TRUST
protected **2** new properties and planted **2** acres of pollinator habitat

Transportation

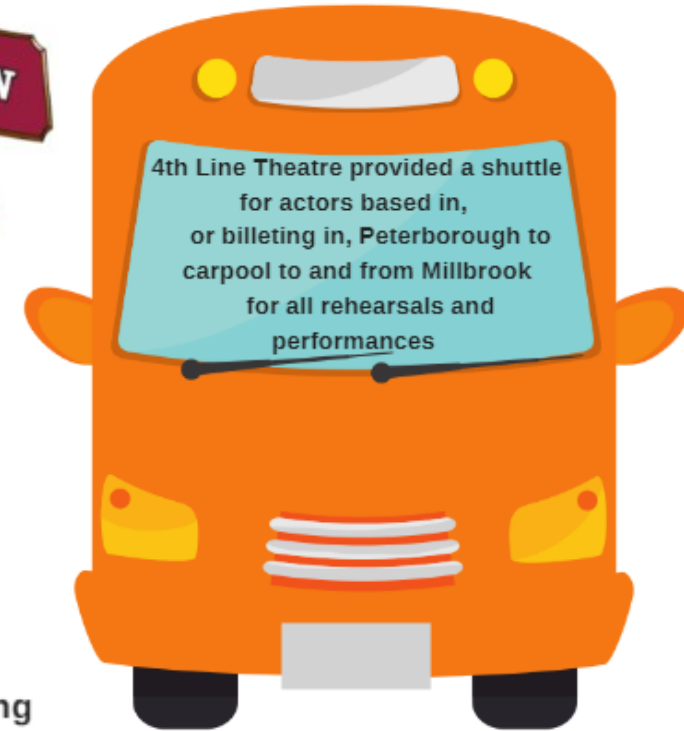
The Township of Otonabee-South Monaghan installed a sidewalk connecting Monaghan Court senior apartments to the commercial district in Keene.



initiated Safe Travels program



755 youth participated in bike riding skills programs offered by BIKE and GreenUP



Waste

Through their recycling and waste diversion programs, such as the new clear bag program, the **Municipality of Trent Lakes** **reduced its garbage by 651 tonnes or 35%** in 2017 from 2016.



Whistle Stop Café installed a Sanimax tank so that old cooking oil is now recycled and repurposed into various products.



Water



Started re-using heat exchange water
from the first brew for the second
brew



provided a free water refill
station



installed 8 rain gardens in partnership with homeowners
and the City of Peterborough, Basterfield and Associates
Landscape Architects, Green Communities Canada
(funded by Ontario Trillium Foundation)

SIEMENS

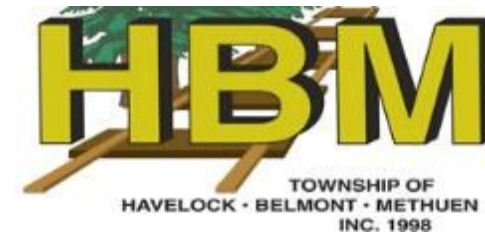
decreased water consumption by 72% by installing a
closed loop system that re-circulates chilled water to
cool production equipment, replacing an open-ended
system



2017 Sustainable Peterborough Coordinating Committee



ECONOMIC DEVELOPMENT



Annual Sustainable Peterborough Partnership Recognition Awards

Agriculture and Local Food – **Locavorest**

Climate Change – **Endeavour Centre**

Cultural Assets – **New Canadians Centre**

Economic Development & Employment – **Lansdowne Place**

Energy – **Township of Selwyn**

Healthy Communities – **Age-friendly Ptbo Advisory Committee**

Land Use Planning – **The Mount Community Centre**

Natural Assets – **Peterborough Pollinators**

Transportation – **Curve Lake First Nation**

Waste – **Whistle Stop Café**

Water – **Siemens Canada Limited, Peterborough**



Greater Peterborough Area Climate Change Action Plan



Sustainable Peterborough
CLIMATE CHANGE ACTION PLAN

All 12 of our partners have adopted their Corporate and Community Targets and Local Action Plans, completing Milestones 2 and 3 of FCM's PCP Program.

Next Steps are completion of Milestones 4 and 5.

Climate Change Coordinator to lead mitigation and adaption initiatives across the GPA.

Summary of Community GHG Reduction

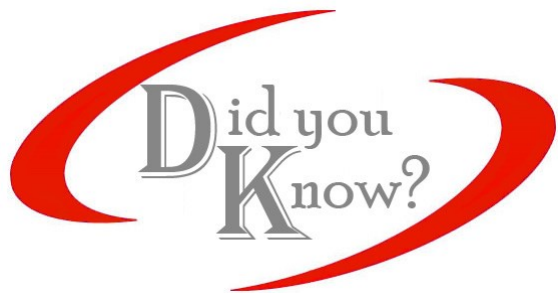
Municipality/ First Nation	2012-2015 Community Actions	Impact of Phase out of Coal on 2011 data	Total GHG Reduction to 2015	Community Target 2031
City of Peterborough	5%	9%	14%	30%
County of Peterborough	5.3%	8%	13.3%	31%
Asphodel-Norwood	3%	5%	8%	25%
Cavan Monaghan	3%	7%	10%	31%
Douro-Dummer	3%	6%	9%	29%
Havelock-Belmont-Methuen	4%	12%	16%	31%
North Kawartha	8%	14%	22%	25%
Otonabee-South Monaghan	5.1%	6%	11.1%	25%
Selwyn	7%	10%	17%	39%
Trent Lakes	12%	12%	24%	39%
Curve Lake First Nation	0%	11%	11%	15%
Hiawatha First Nation	0%	11%	11%	15%

Summary of Corporate GHG Reduction

Municipality/ First Nation	2012-2015 Corporate Actions	Impact of Phase out of Coal on 2011 data	Total GHG Reduction to 2015	Corporate Target 2031
City of Peterborough	0.1%	11%	11.1%	30%
County of Peterborough	0.1%	6%	6.1%	26%
Asphodel-Norwood	0%	19%	19%	28%
Cavan Monaghan	0%	10%	10%	29%
Douro-Dummer	1.2%	17%	18.2%	32%
Havelock-Belmont-Methuen	1.1%	11%	12.1%	40%
North Kawartha	0%	10%	10%	20%
Otonabee-South Monaghan	0.3%	11%	11.3%	25%
Selwyn	1.1%	12%	13.1%	40%
Trent Lakes	0%	4%	4%	26%
Curve Lake First Nation	0%	15%	15%	15%
Hiawatha First Nation	0%	15%	15%	15%

Climate Change Projects

- March 2018 AMO LAS Municipal Energy Train the Trainer Program;
- Update CCAP inventory to include 2016 data for all 12 partners;
- Support municipalities on Municipal GHG Challenge Fund Applications;
- 2019 Green Energy Act Conservation Demand Management Plan;
- Support Corporate Green Teams; and
- Consider engaging IESO funded Energy Conservation Manager for City, County, Township and First Nation Facilities.



That our climate change targets
only go until 2031?

Calculating GHG Emissions

Ontario Climate Change Action Plan			
* Year	Ontario Population	Targeted GHG Emissions (tCO ₂ e)	Average Annual Per Capita Emissions (tCO ₂ e)
1990	10,295,832	182,000,000	17.7
2013	13,556,200	171,000,000	12.6
2020	14,980,400	146,000,000	9.7
2030	16,658,300	115,000,000	6.9
2050 est.	19,754,035	36,400,000	1.8

Greater Peterborough Area Climate Change Action Plan			
Year	City Population	Estimated GHG Emissions (tCO ₂ e)	Average Annual Per Capita Emissions (tCO ₂ e)
1991	68,371	416,692	6.1
2011	78,698	349,743	4.4
2021	81,150	314,769	3.9
2031	81,385	244,820	3
2050 est.			

Ontario
50% - 2020
37% - 2030
80% - 2050

City
30% - 2031

* MOECC Guideline on Community Emissions Reduction Planning

Thank you!

Questions/Comments?

Contact Information

705-743-0777 Ext. 2159
info@sustainablepeterborough.ca
www.sustainablepeterborough.ca
Twitter @sustainableptbo
Facebook Sustainable Peterborough