



PTBO PLAN

Official Plan Working Group
Community Design Charrette – Summary of Results
September 17, 2018



Charrette Agenda

Date: **June 4-7, 2018** Location: **Peterborough Square, 340 George Street North** (lower level)

Nodes, Corridors, Neighbourhoods		Downtown	
Monday, June 4	Tuesday, June 5	Wednesday, June 6	Thursday, June 7
Kick-off & Design Day	Design Day	Kick-off & Design Day	Design Day & Wrap Up
Kick-off Presentation Design Session 1 <div>South</div> <ol style="list-style-type: none"> Landsdowne - West Landsdowne - Memorial Landsdowne - Ashburnham Clonsilla - Sherbrooke 	Design Session 3 <div>North</div> <ol style="list-style-type: none"> Trent Chemong Parkhill/Armour Parkhill/Water 	Kick-off Presentation Design Session 5 <div>Downtown Districts</div> (built form, public realm, circulation) <ul style="list-style-type: none"> North Central South East 	Design Session 7 Design, Review, Reconsider, & Revise 4 Downtown Districts
Lunch	Lunch	Lunch	Lunch
Design Session 2 <div>North</div> <ol style="list-style-type: none"> Trent Chemong Parkhill/Armour Parkhill/Water 	Design Session 4 <div>South</div> <ol style="list-style-type: none"> Landsdowne - West Landsdowne - Memorial Landsdowne - Ashburnham Clonsilla - Sherbrooke 	Design Session 6 <div>Downtown Districts</div> (built form, public realm, circulation) <ul style="list-style-type: none"> North Central South East 	Design Session 8 Design, Review, Reconsider, & Revise 4 Downtown Districts
Designers' Drawing Preparation for Pin Up	Designers' Drawing Preparation for Pin Up	Designers' Drawing Preparation for Pin Up	Prepare Material for Wrap Up Presentation
Plenary, Pin Up & Discussion 8 Concepts	Plenary, Pin Up all Concepts & Discussion 2 Concepts for Each Node/Corridor/Neighbourhood	Plenary, Pin Up & Discussion 4 Downtown Districts	
Public Open House/ Drop In	Public Open House/ Drop In	Public Open House/ Drop In	Charrette Wrap Up Presentation and Open House
Review Results of Charrette Day 1	Review Results of Charrette Day 2	Review Results of Charrette Day 3	

4

Days

4

Evening open houses

6

Designers

8

City Planning staff in attendance

180

—

Invitations extended

Nodes, Corridors, Neighbourhoods

South

- 1 Landsdowne - West
- 2 Landsdowne - Memorial
- 3 Landsdowne - Ashburnham
- 4 Cionsilla - Sherbrooke

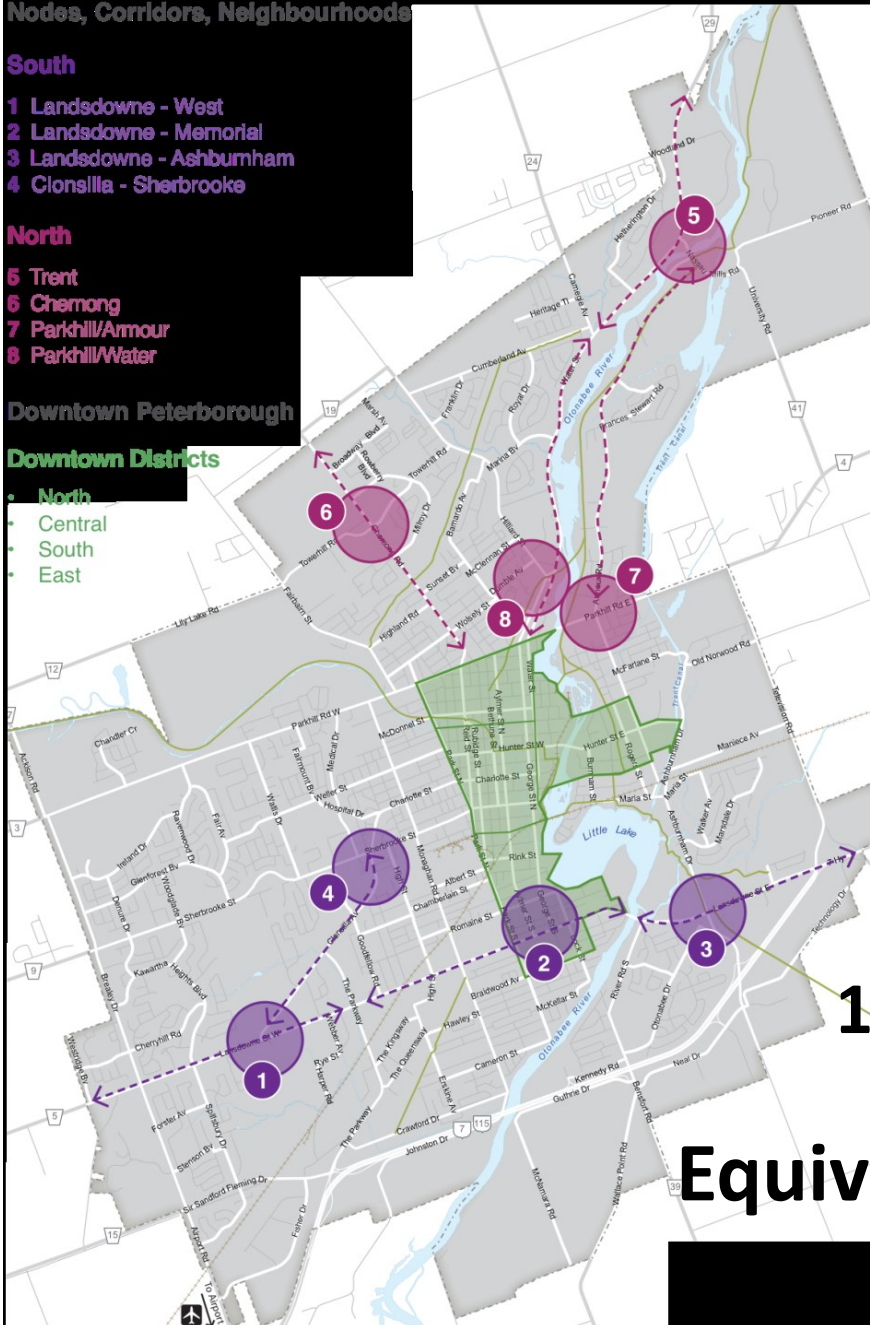
North

- 5 Trent
- 6 Chamong
- 7 Parkhill/Armour
- 8 Parkhill/Water

Downtown Peterborough

Downtown Districts

- North
- Central
- South
- East



Day 1 Nodes and Corridors

55 people = 440 hours

Day 2 Nodes and Corridors

40 people = 320 hours

Day 3 Downtown

60 people = 480 hours

Day 4 Downtown

30 people = 150 hours

4, 5 and 6 designers

240 hours

1080 hours = 217 days of work

Equivalent of 43 weeks of work
for one person

Summary of Charrette Results

1 poster for each of 8 Nodes and 4 posters for Downtown

1 summary report for all:

- Demonstration plan for each node and downtown
- Public realm, built form and mobility guidelines for each node and downtown
- Enhanced built form, character area and heritage guidelines for downtown

Nodes and Corridors

Nodes, Corridors, Neighbourhoods

South

- 1 Lansdowne - West
- 2 Lansdowne - Memorial
- 3 Lansdowne - Ashburnham
- 4 Clonsilla - Sherbrooke

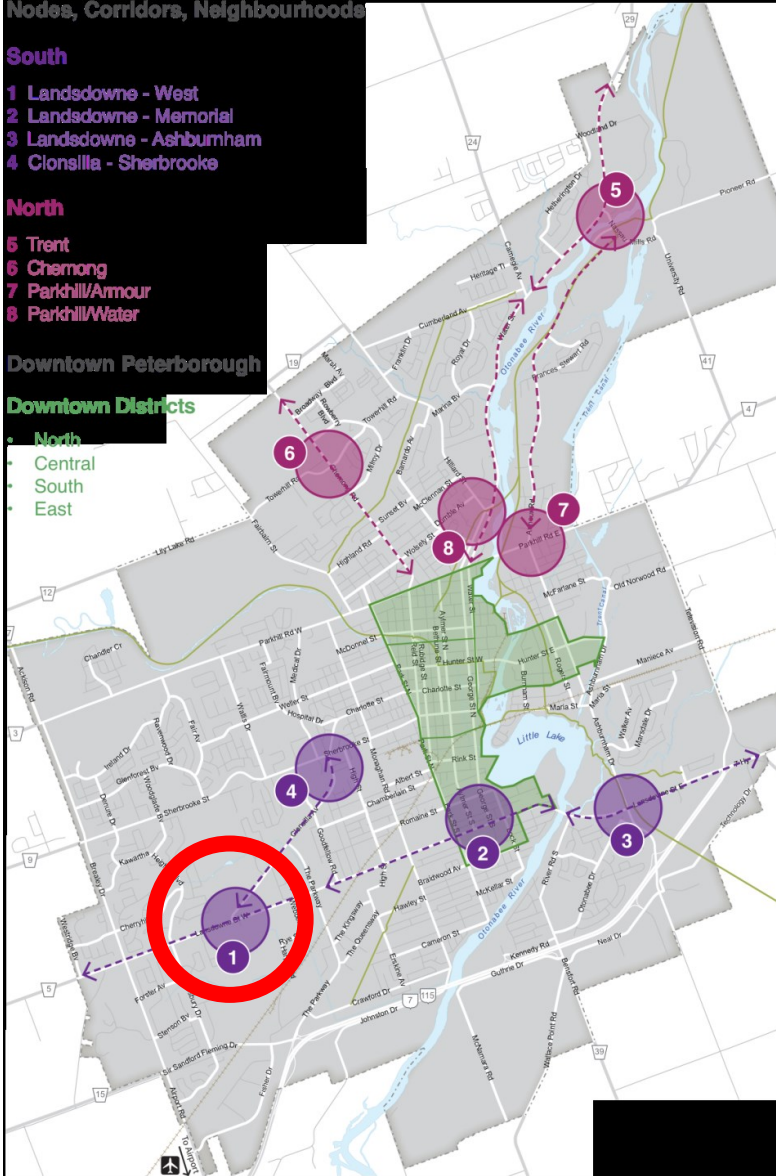
North

- 5 Trent
- 6 Chemong
- 7 Parkhill/Armour
- 8 Parkhill/Water

Downtown Peterborough

Downtown Districts

- North
- Central
- South
- East



1

Lansdowne and Clonsilla

1. Lansdowne and Clonsilla



1. Lansdowne and Clonsilla



Transformed neighbourhood

1. Lansdowne and Clonsilla



Multi-modal movement along Lansdowne

1. Lansdowne and Clonsilla



Greenway along Clonsilla

Nodes, Corridors, Neighbourhoods

South

- 1 Lansdowne - West
- 2 Lansdowne - Memorial
- 3 Lansdowne - Ashburnham
- 4 Clonsilla - Sherbrooke

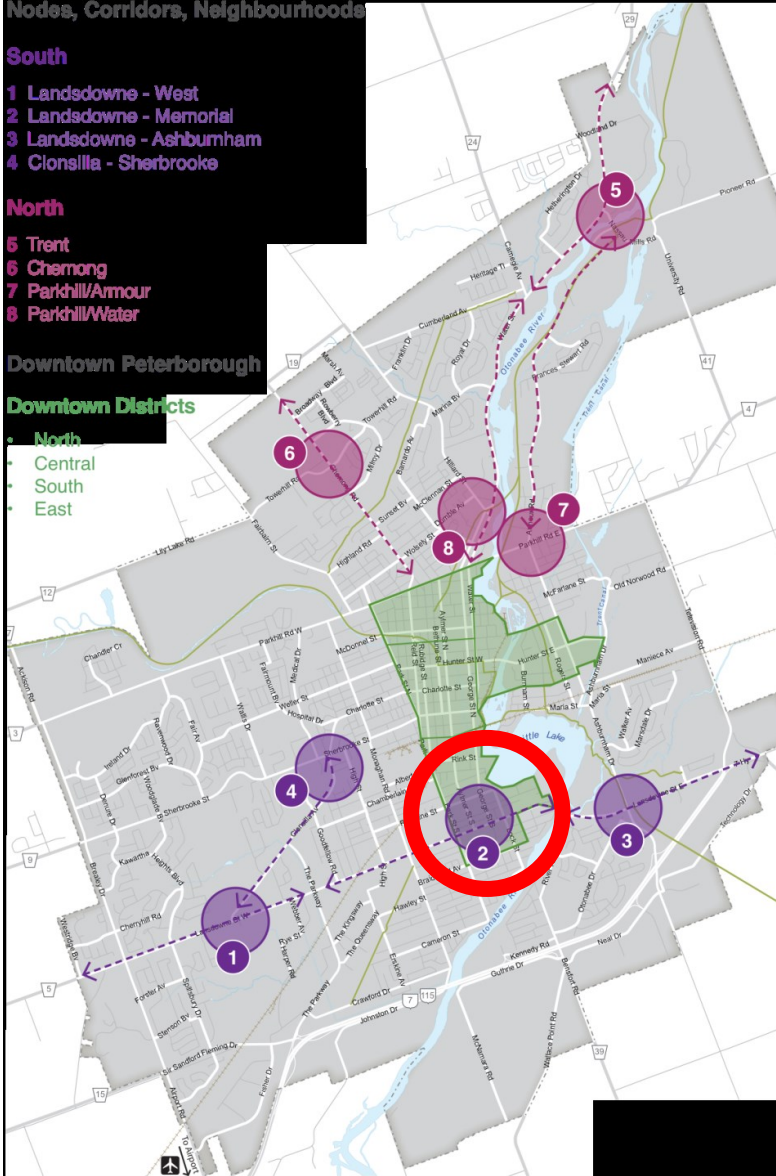
North

- 5 Trent
- 6 Chemong
- 7 Parkhill/Armour
- 8 Parkhill/Water

Downtown Peterborough

Downtown Districts

- North
- Central
- South
- East



2

Lansdowne and George

2. Lansdowne and George

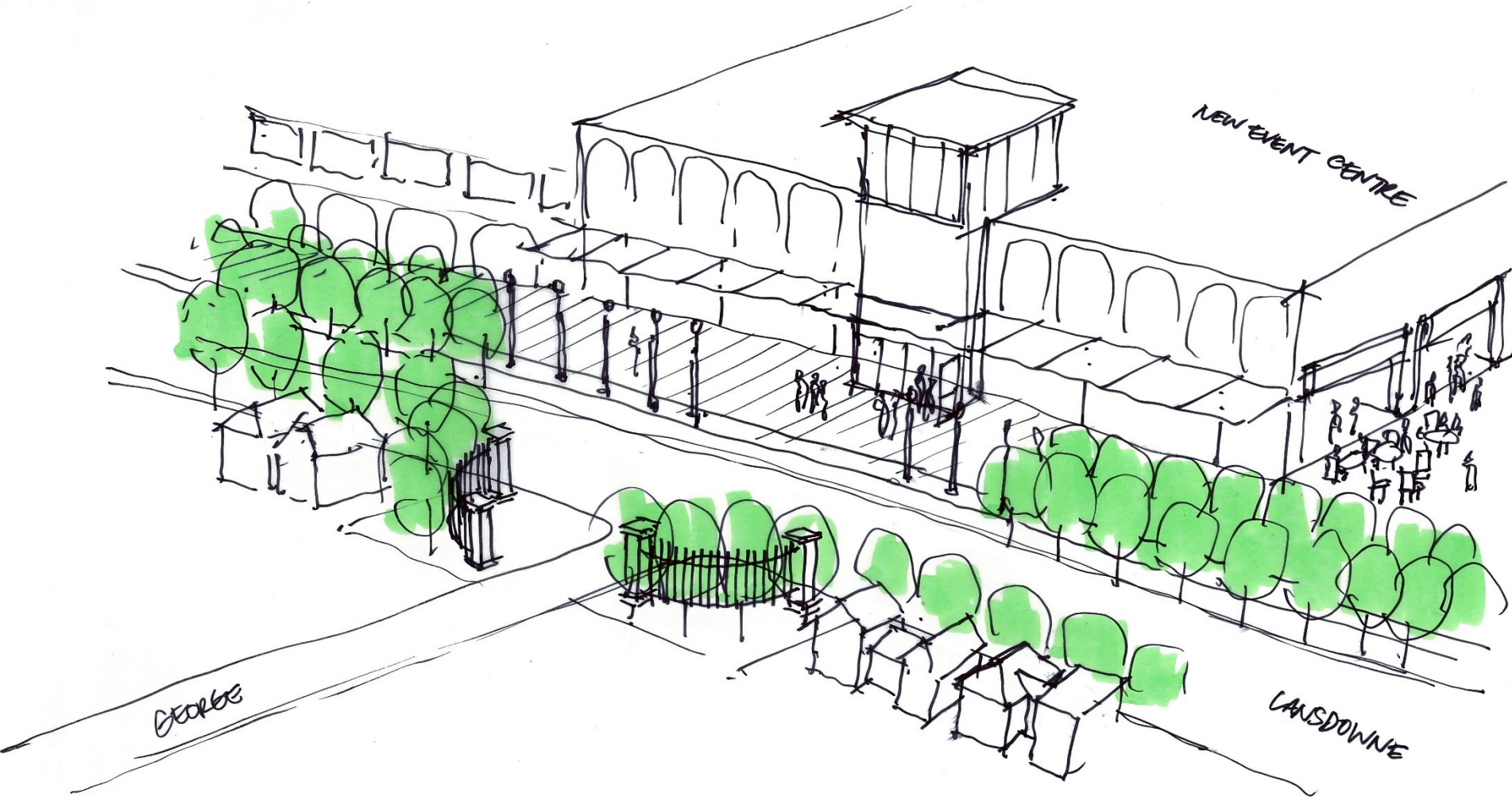


2. Lansdowne and George



Gateway, Trail Connections

2. Lansdowne and George



Event Centre Gateway

Nodes, Corridors, Neighbourhoods

South

- 1 Landsdowne - West
- 2 Landsdowne - Memorial
- 3 Landsdowne - Ashburnham
- 4 Clonsilla - Sherbrooke

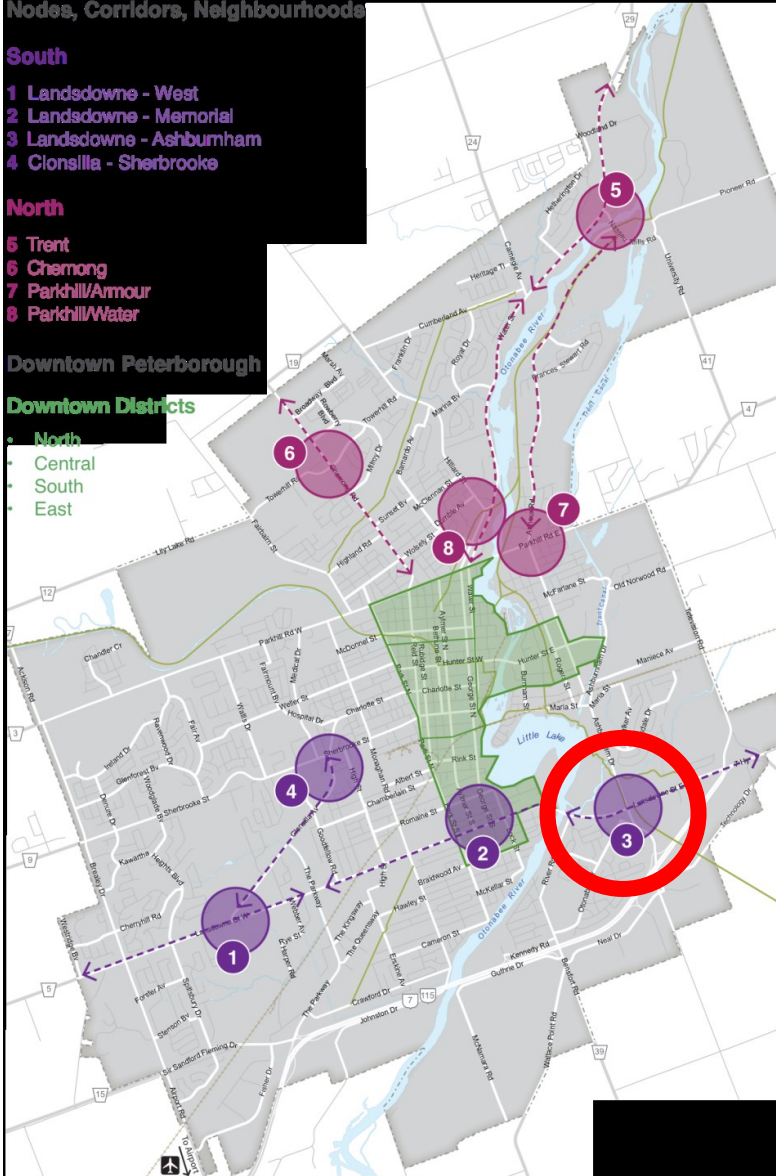
North

- 5 Trent
- 6 Chemong
- 7 Parkhill/Armour
- 8 Parkhill/Water

Downtown Peterborough

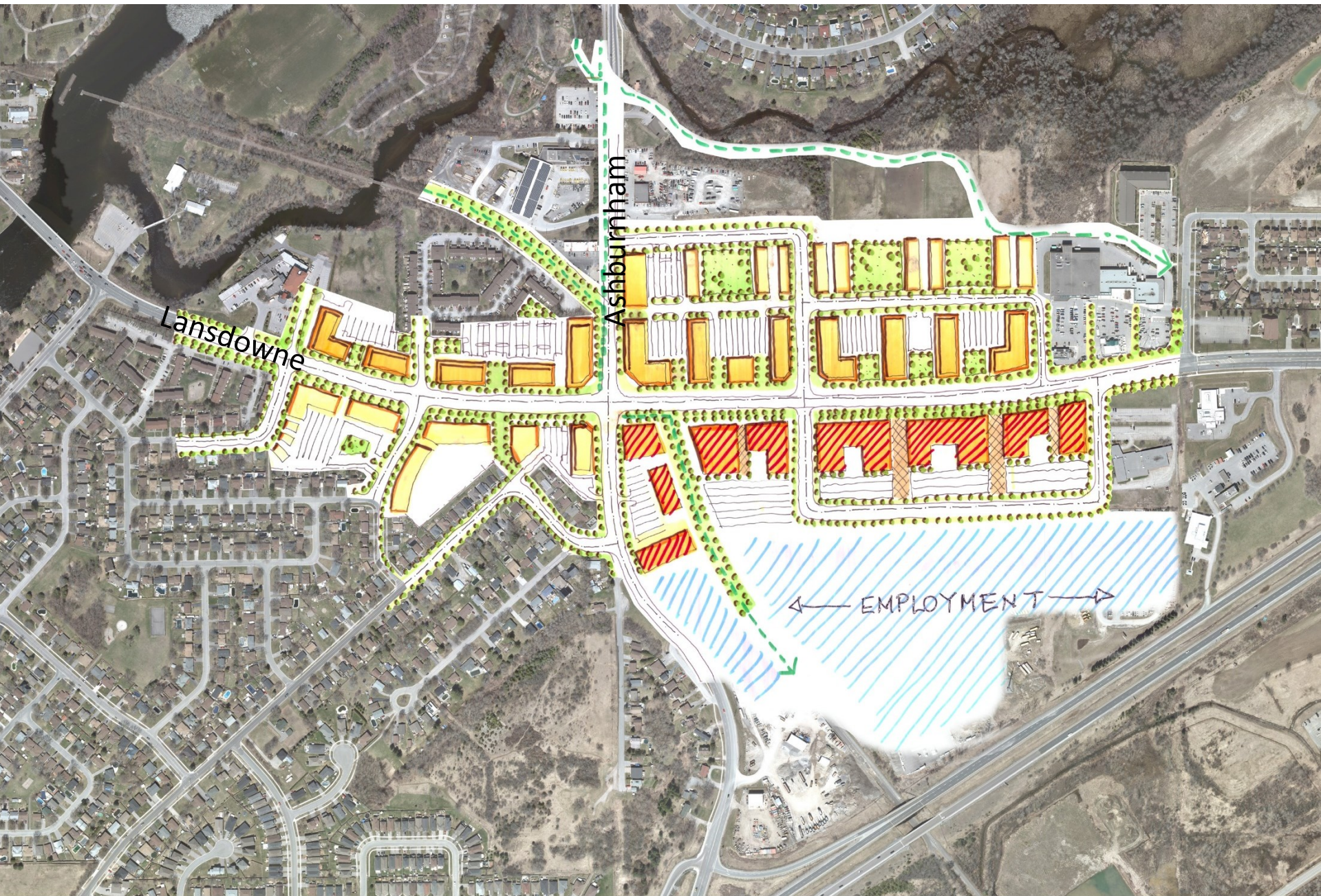
Downtown Districts

- North
- Central
- South
- East



3 Landsdowne and Ashburnham

3. Lansdowne and Ashburnham



3. Lansdowne and Ashburnham



Multi-modal movement along Lansdowne

3. Lansdowne and Ashburnham



Mixed use

Nodes, Corridors, Neighbourhoods

South

- 1 Landsdowne - West
- 2 Landsdowne - Memorial
- 3 Landsdowne - Ashburnham
- 4 Clonsilla - Sherbrooke

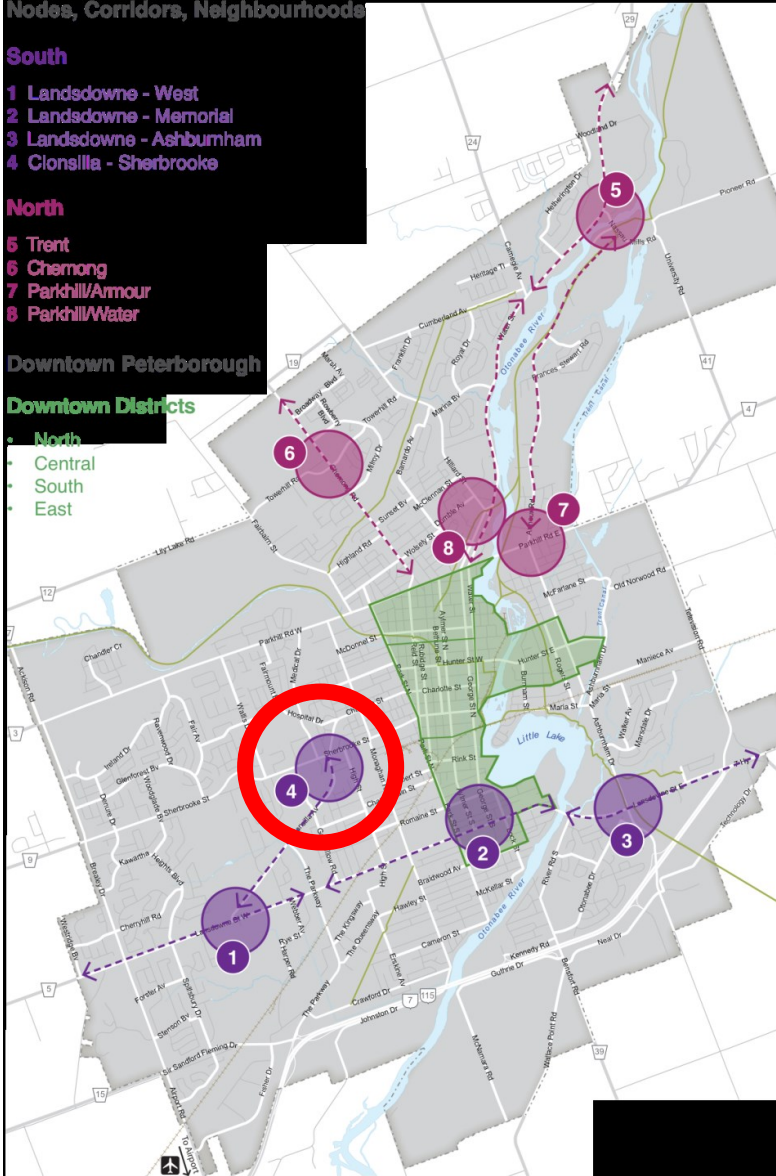
North

- 5 Trent
- 6 Chemong
- 7 Parkhill/Armour
- 8 Parkhill/Water

Downtown Peterborough

Downtown Districts

- North
- Central
- South
- East



4

Clonsilla and Sherbrooke

4. Clonsilla and Sherbrooke



4. Clonsilla and Sherbrooke



Intensification along major roads

4. Clonsilla and Sherbrooke



Placemaking in new neighbourhoods

Nodes, Corridors, Neighbourhoods

South

- 1 Landsdowne - West
- 2 Landsdowne - Memorial
- 3 Landsdowne - Ashburnham
- 4 Clonsilla - Sherbrooke

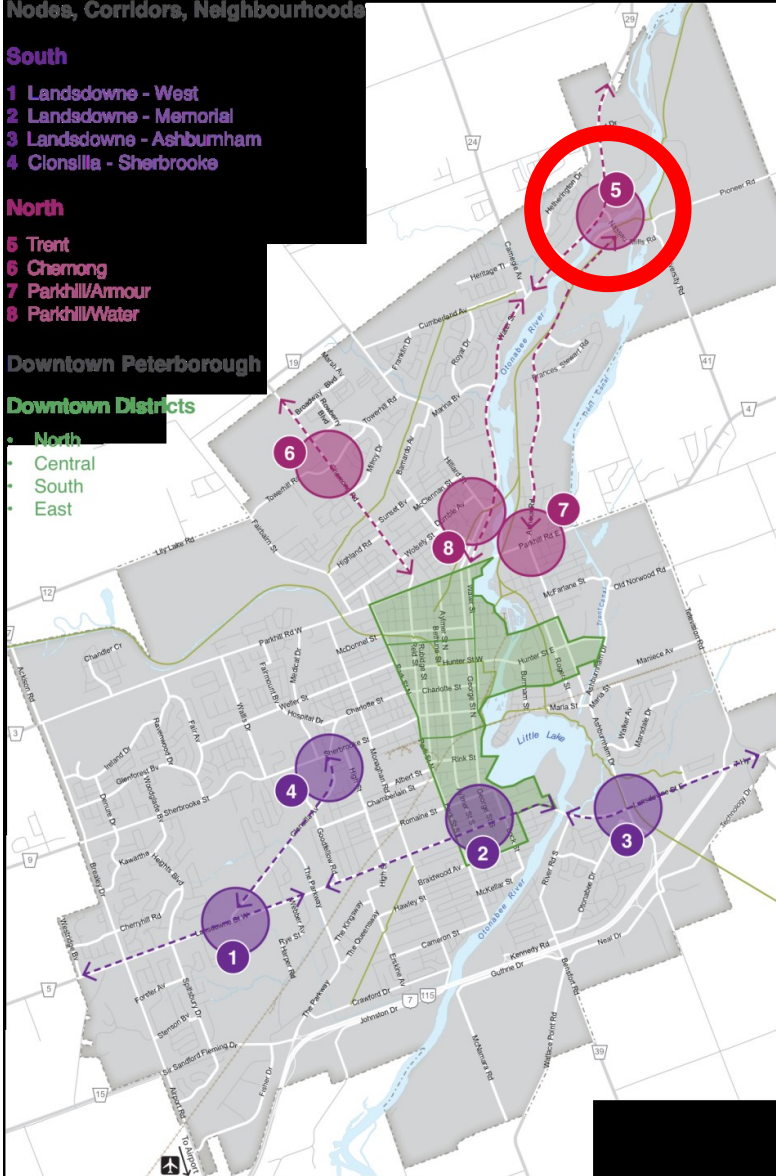
North

- 5 Trent
- 6 Chemong
- 7 Parkhill/Armour
- 8 Parkhill/Water

Downtown Peterborough

Downtown Districts

- North
- Central
- South
- East



5

Armour and Nassau Mills

5. Armour and Nassau Mills



5. Armour and Nassau Mills



Comprehensive planning for sustainable communities

Nodes, Corridors, Neighbourhoods

South

- 1 Landsdowne - West
- 2 Landsdowne - Memorial
- 3 Landsdowne - Ashburnham
- 4 Clonsilla - Sherbrooke

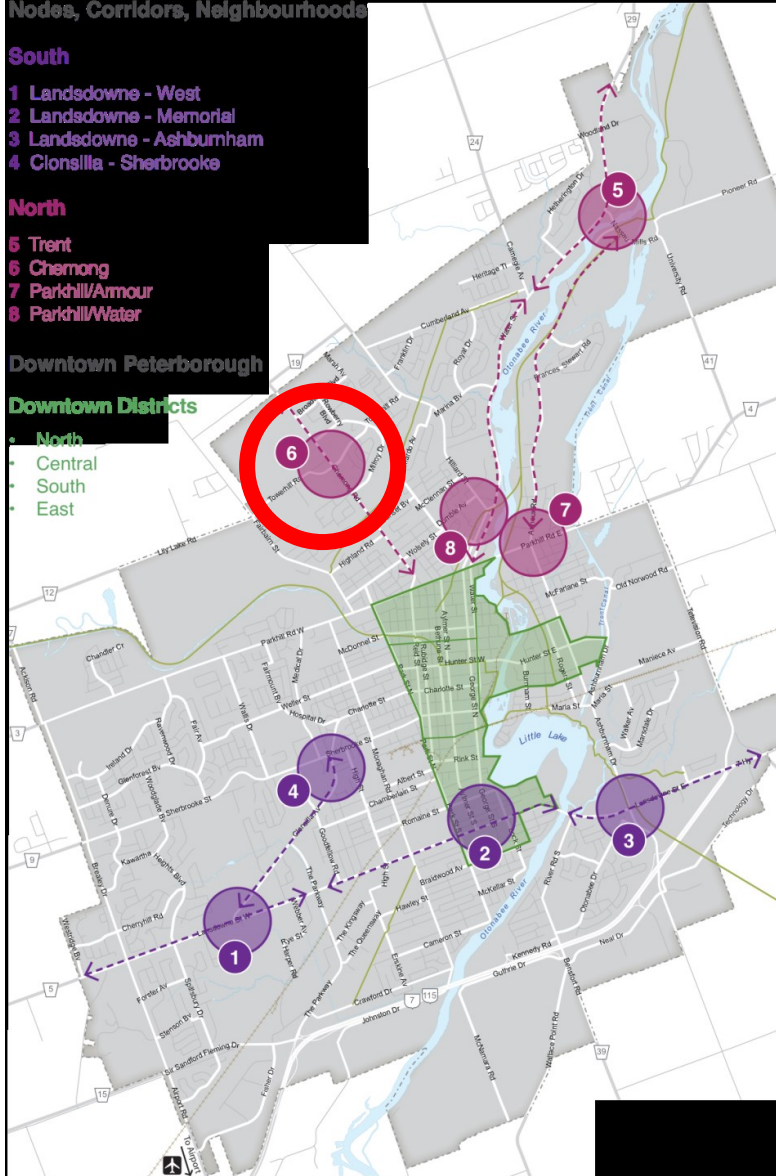
North

- 5 Trent
- 6 Chemong
- 7 Parkhill/Armour
- 8 Parkhill/Water

Downtown Peterborough

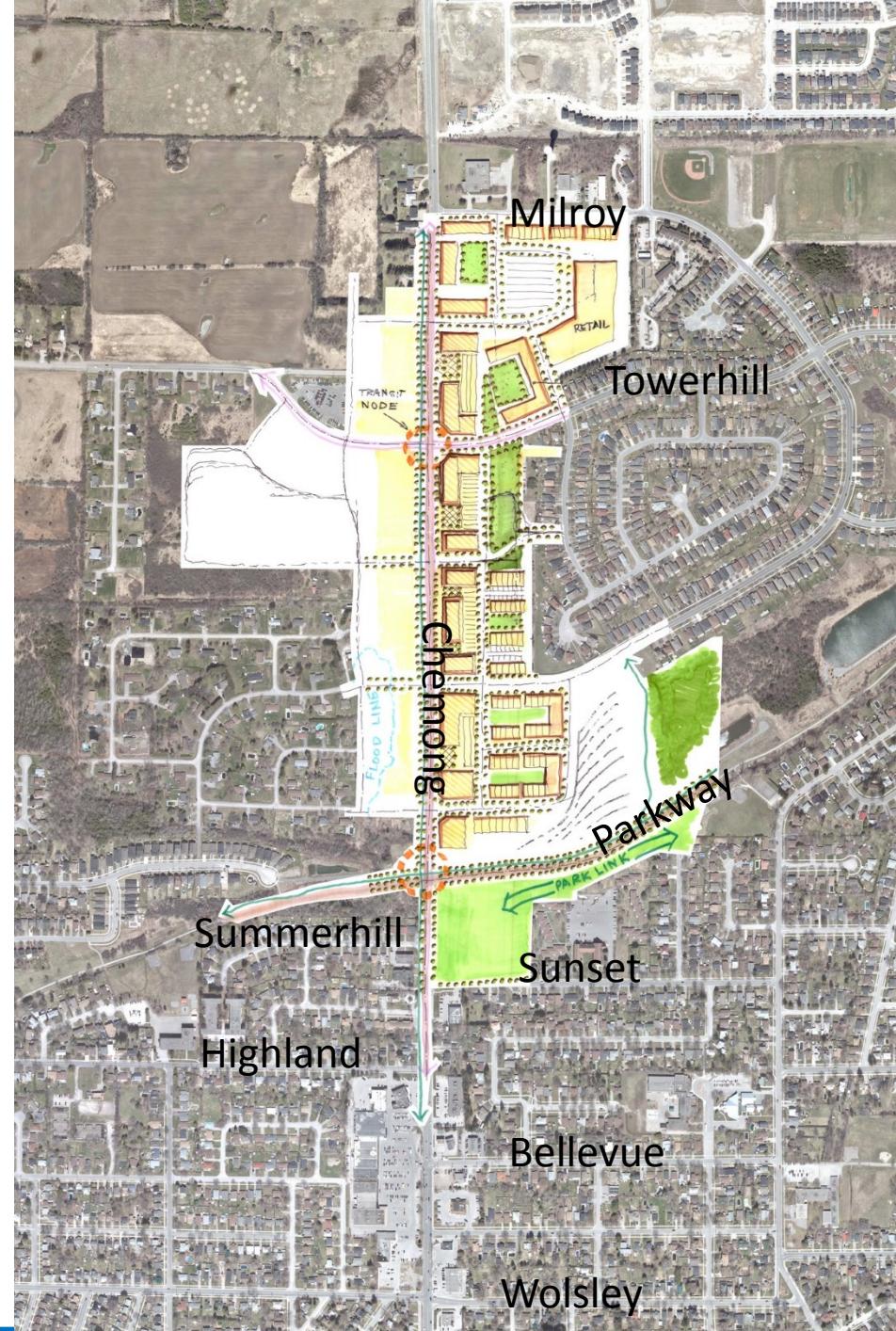
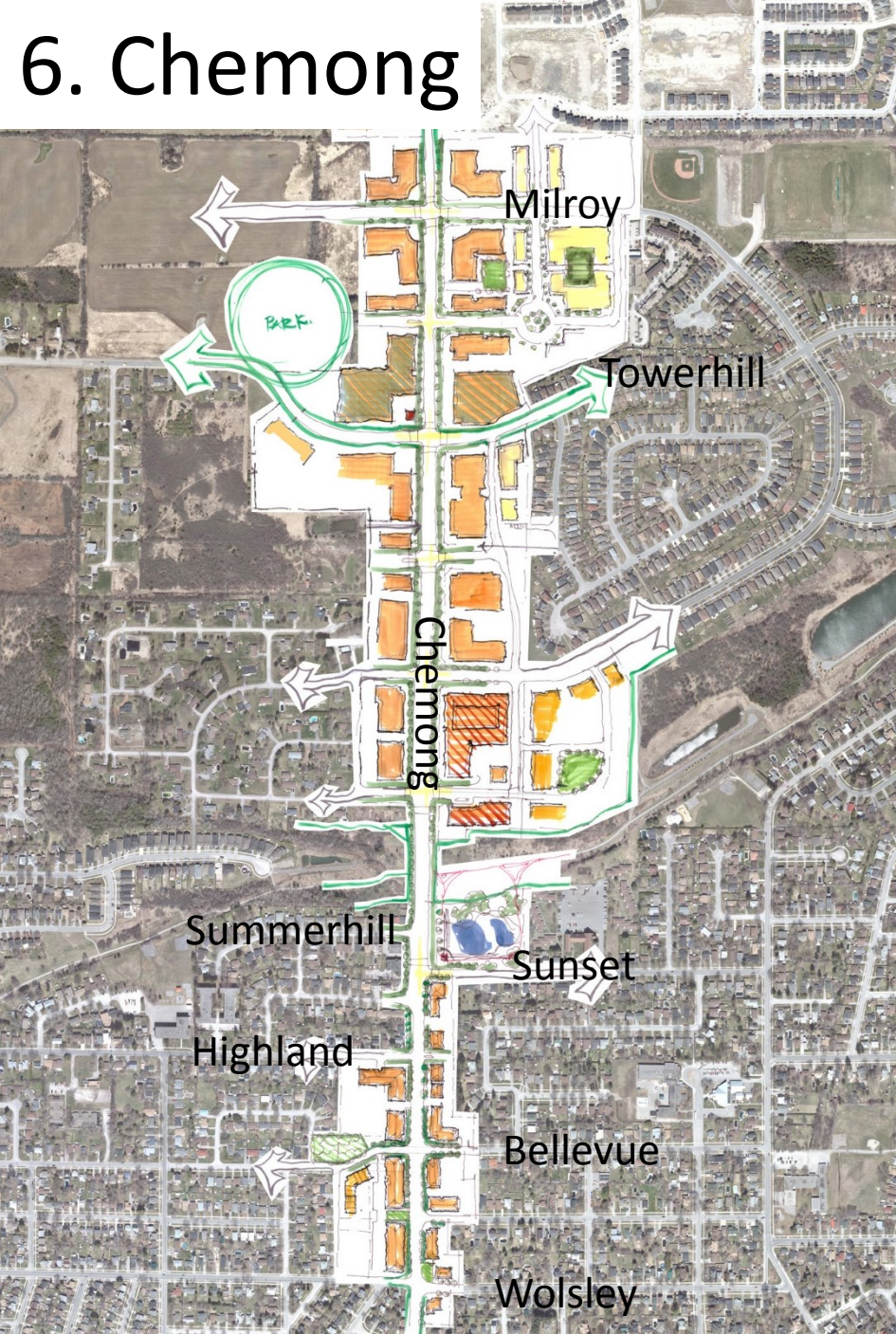
Downtown Districts

- North
- Central
- South
- East

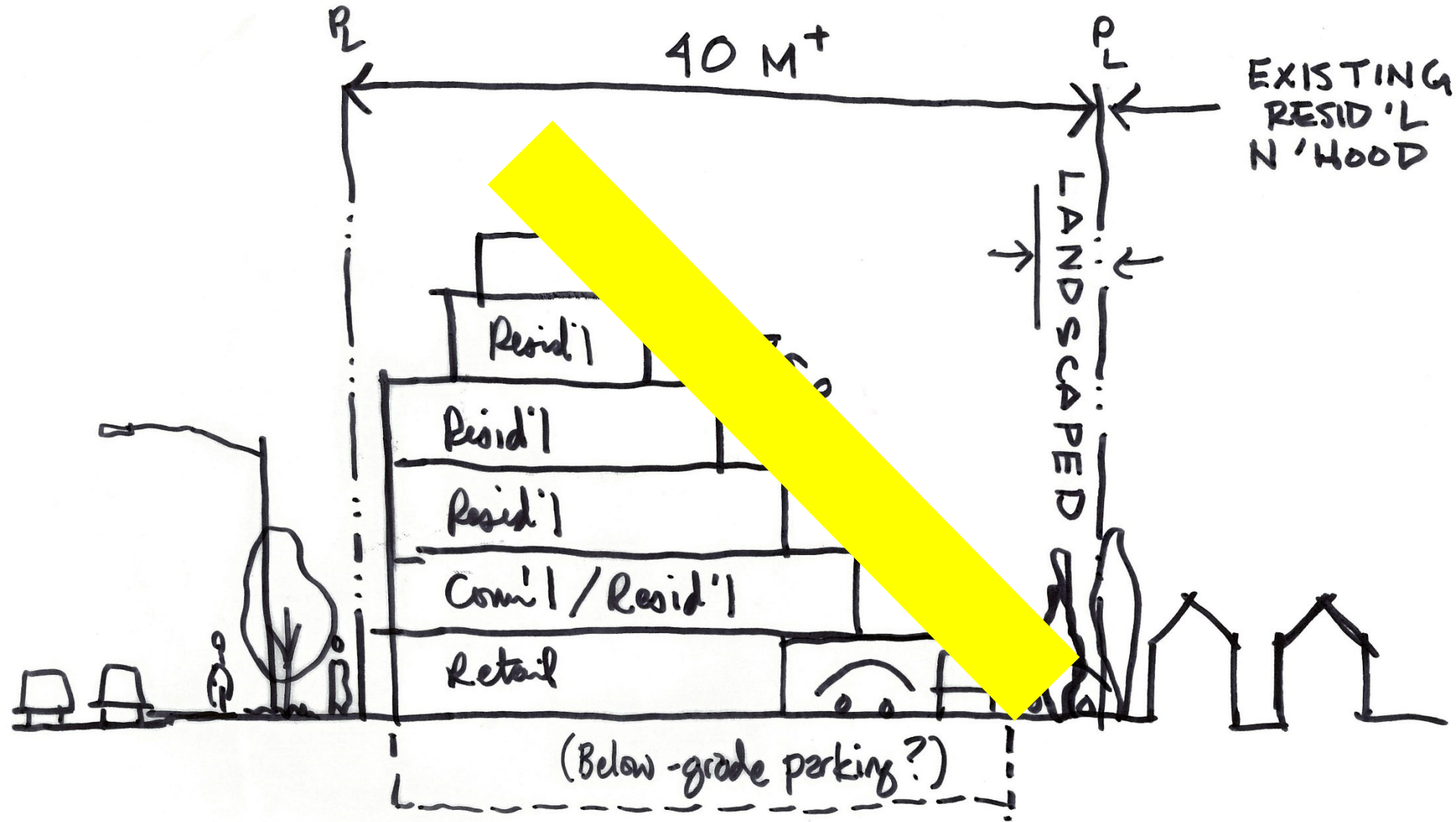


6 Chemong

6. Chemong



6. Chemong



Transition to existing residential

Nodes, Corridors, Neighbourhoods

South

- 1 Landsdowne - West
- 2 Landsdowne - Memorial
- 3 Landsdowne - Ashburnham
- 4 Clonsilla - Sherbrooke

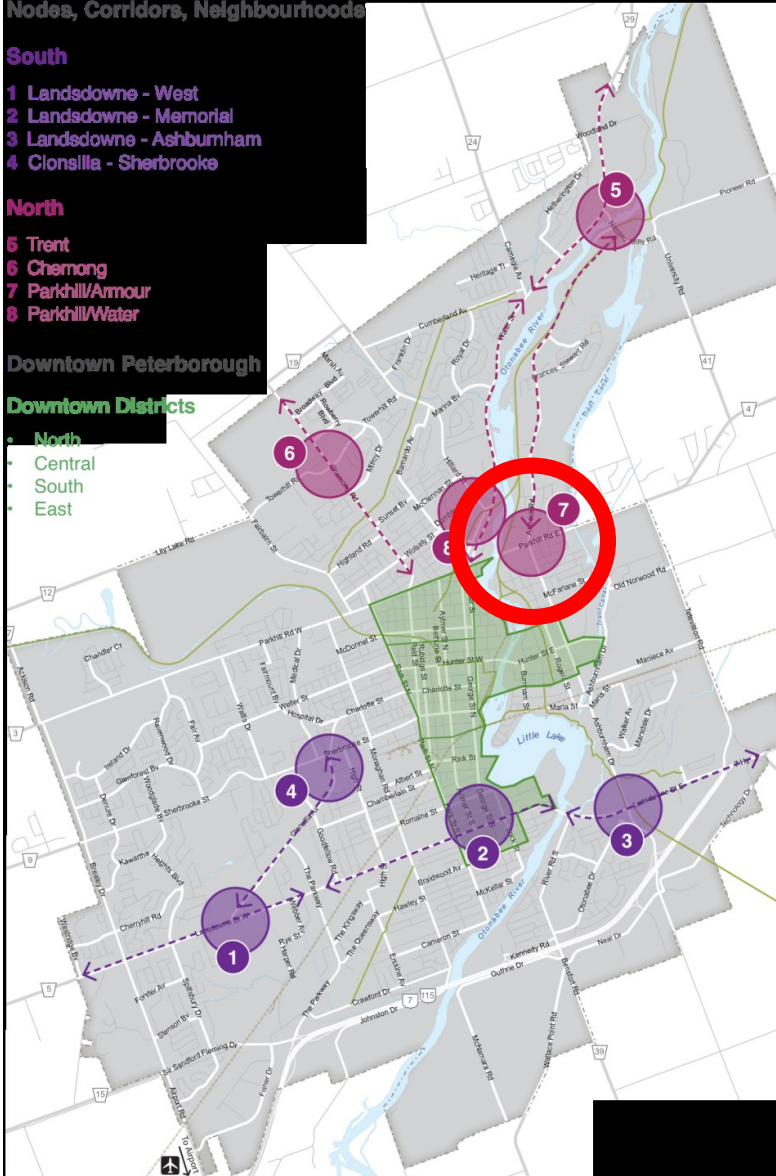
North

- 5 Trent
- 6 Chemong
- 7 Parkhill/Armour
- 8 Parkhill/Water

Downtown Peterborough

Downtown Districts

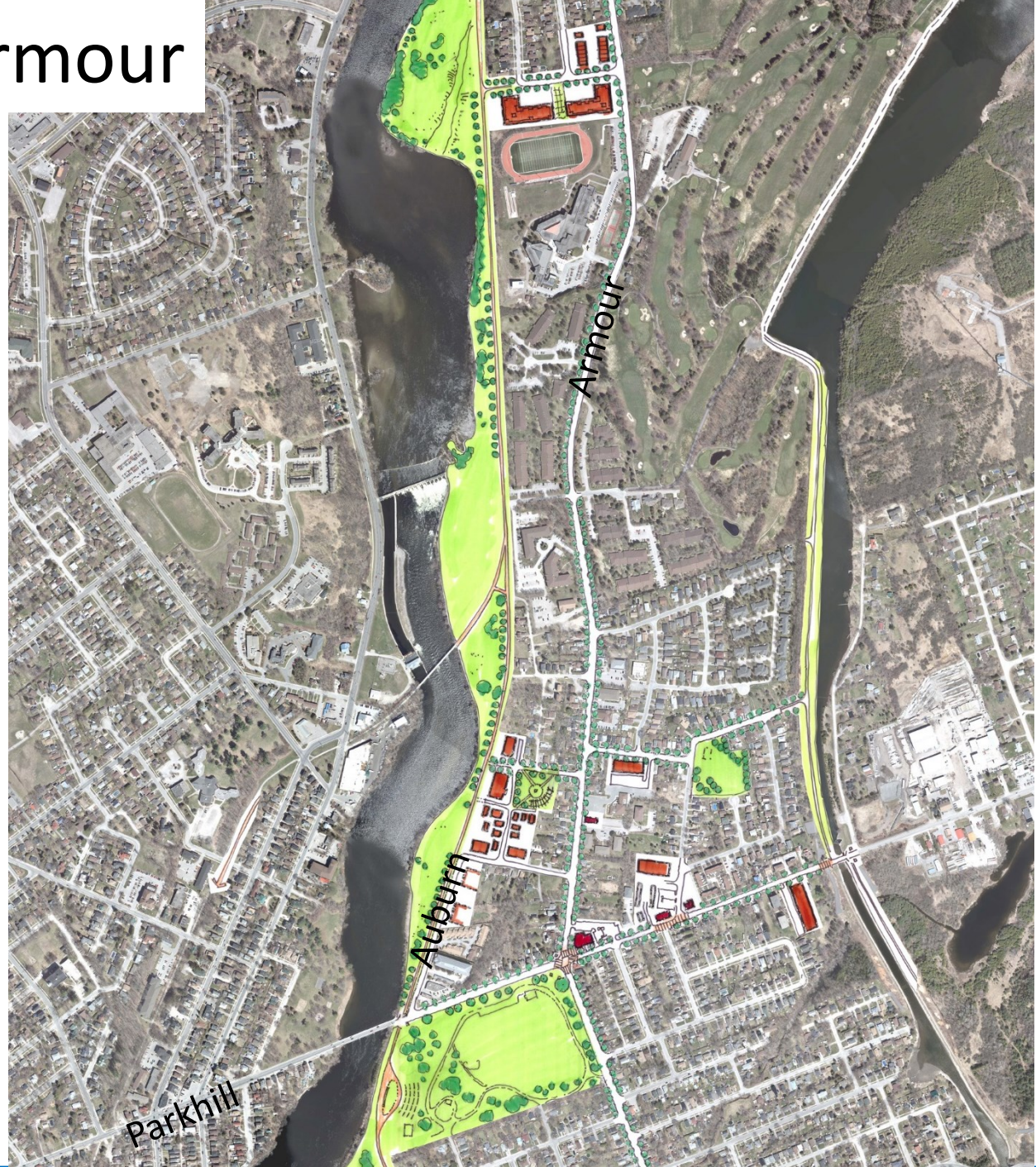
- North
- Central
- South
- East



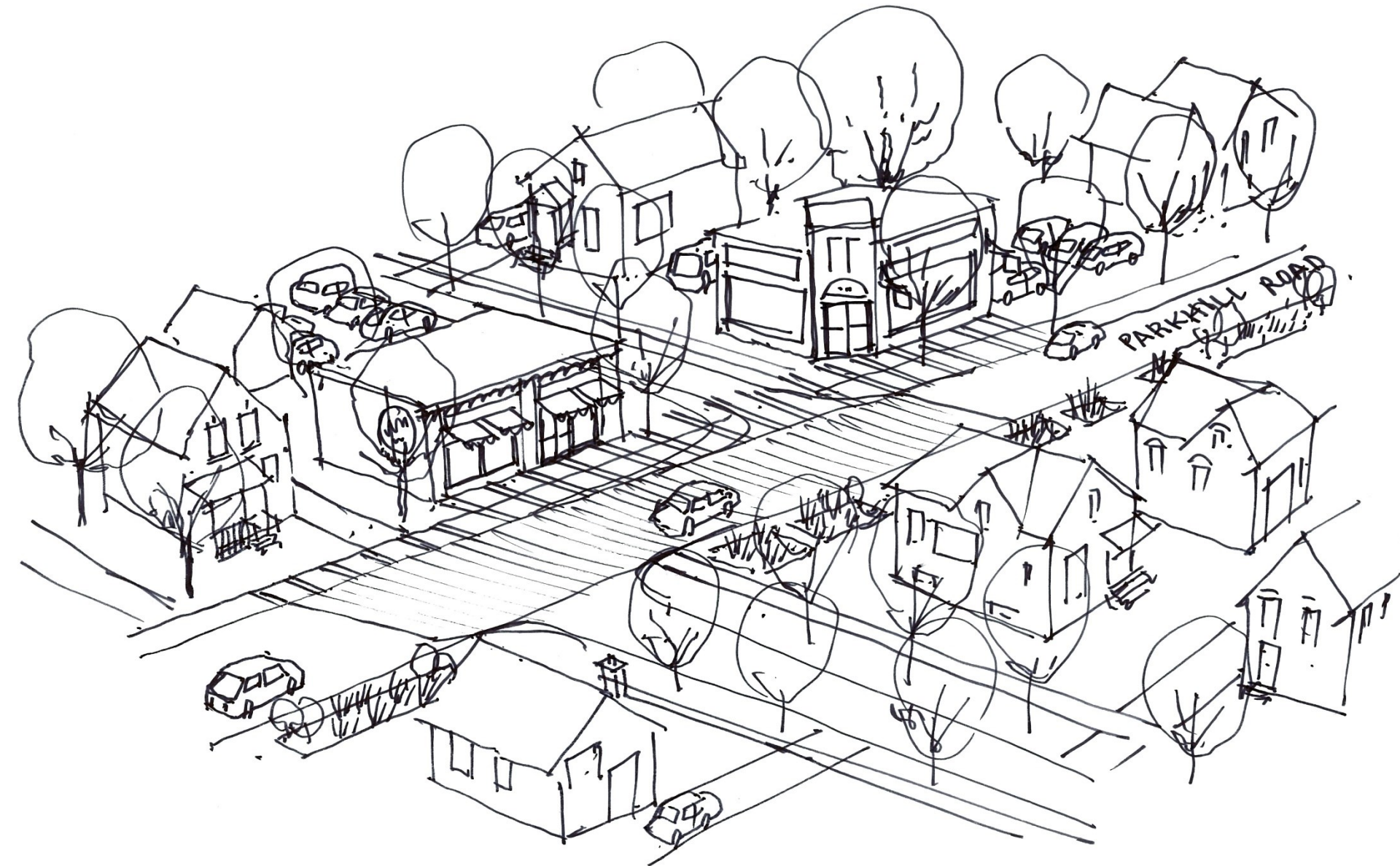
7

Parkhill and Armour

7. Parkhill and Armour



7. Parkhill and Armour



Parkhill Road street improvements

7. Parkhill and Armour



Compatible infill

Nodes, Corridors, Neighbourhoods

South

- 1 Landsdowne - West
- 2 Landsdowne - Memorial
- 3 Landsdowne - Ashburnham
- 4 Clonsilla - Sherbrooke

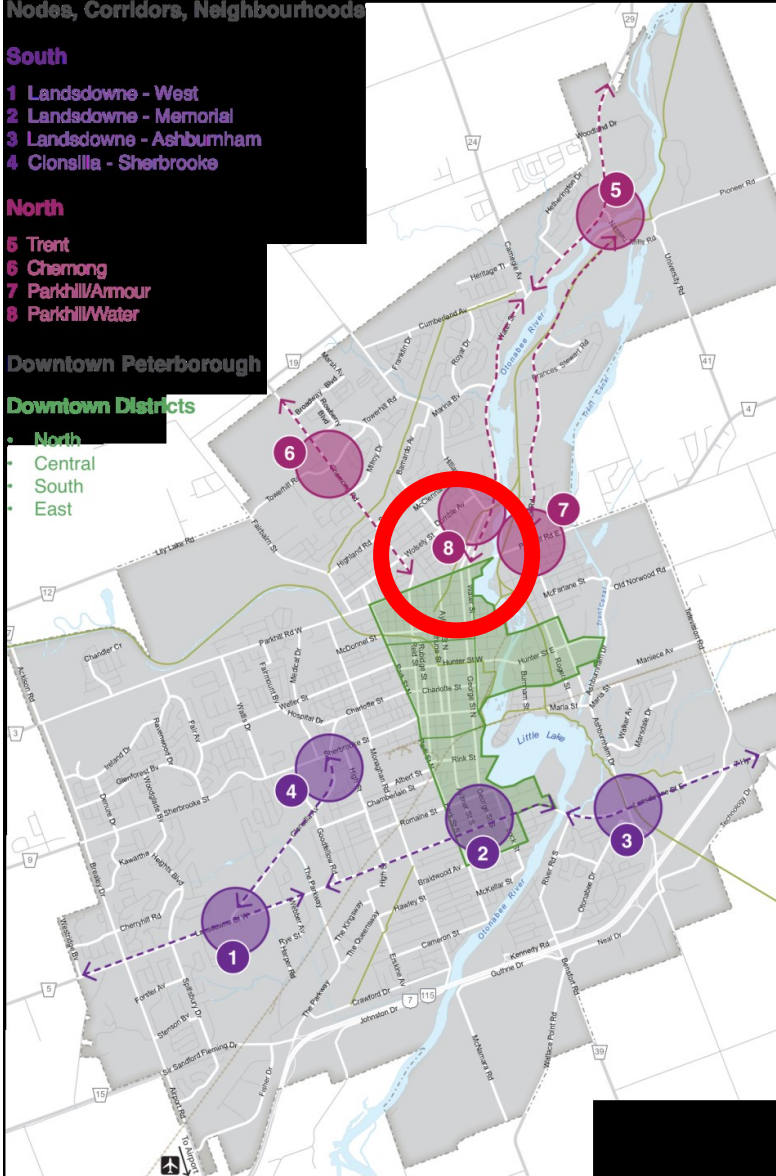
North

- 5 Trent
- 6 Chemong
- 7 Parkhill/Armour
- 8 Parkhill/Water

Downtown Peterborough

Downtown Districts

- North
- Central
- South
- East



8

Parkhill and Water

8. Parkhill and Water



8. Parkhill and Water



Windows to the river

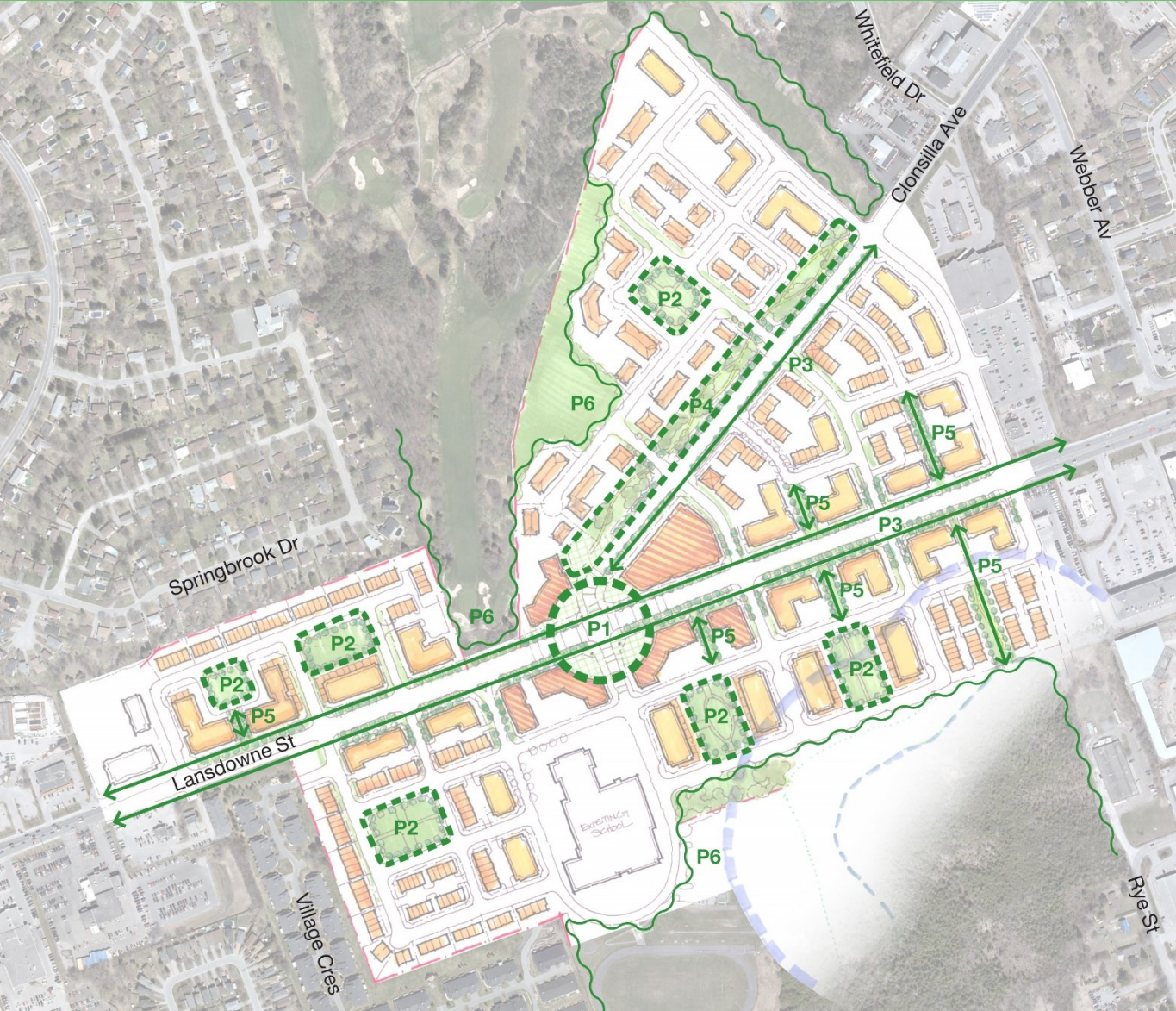
8. Parkhill and Water



Mixed use infill – local centre

Urban Design Frameworks

Public Realm



- Gateways: streets, built form & landscape
- Parks: neighbourhood focus
- Special features: greenways, boulevards
- Mid-block connections
- Community edges
- Public realm network: streets, open spaces, sidewalks, street trees

Urban Design Frameworks

Built Form



- Buildings reinforce streets
- Ground level design
- Mixed uses
- Height/density structure: transition, compatibility
- Variety: type, height, tenure, use
- Parking screened

Urban Design Frameworks

Mobility



- Fine-grain connected network
- Short blocks for permeability
- Balance all modes of travel
- Cycling routes
- Streets are windows to open space
- Transit, land use and density are linked
- Accessible network

Nodes, Corridors, Neighbourhoods

South

- 1 Landsdowne - West
- 2 Landsdowne - Memorial
- 3 Landsdowne - Ashburnham
- 4 Clonsilla - Sherbrooke

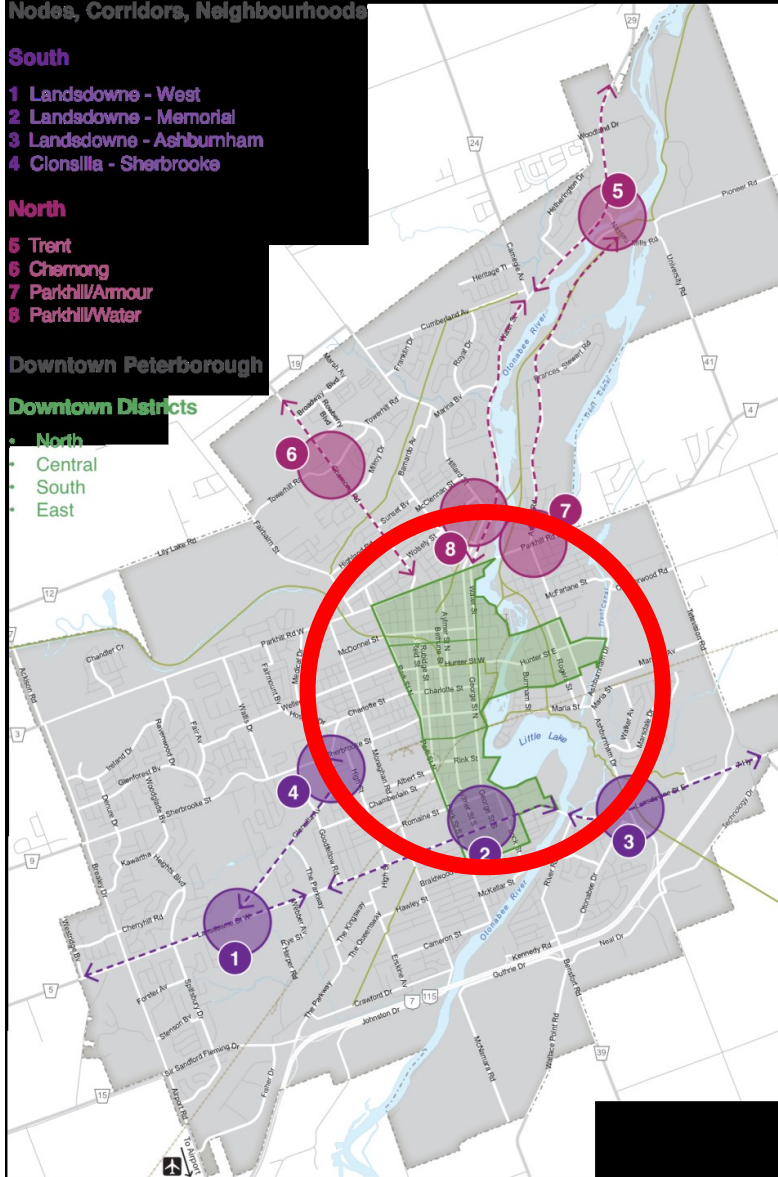
North

- 5 Trent
- 6 Chemong
- 7 Parkhill/Armour
- 8 Parkhill/Water

Downtown Peterborough

Downtown Districts

- North
- Central
- South
- East

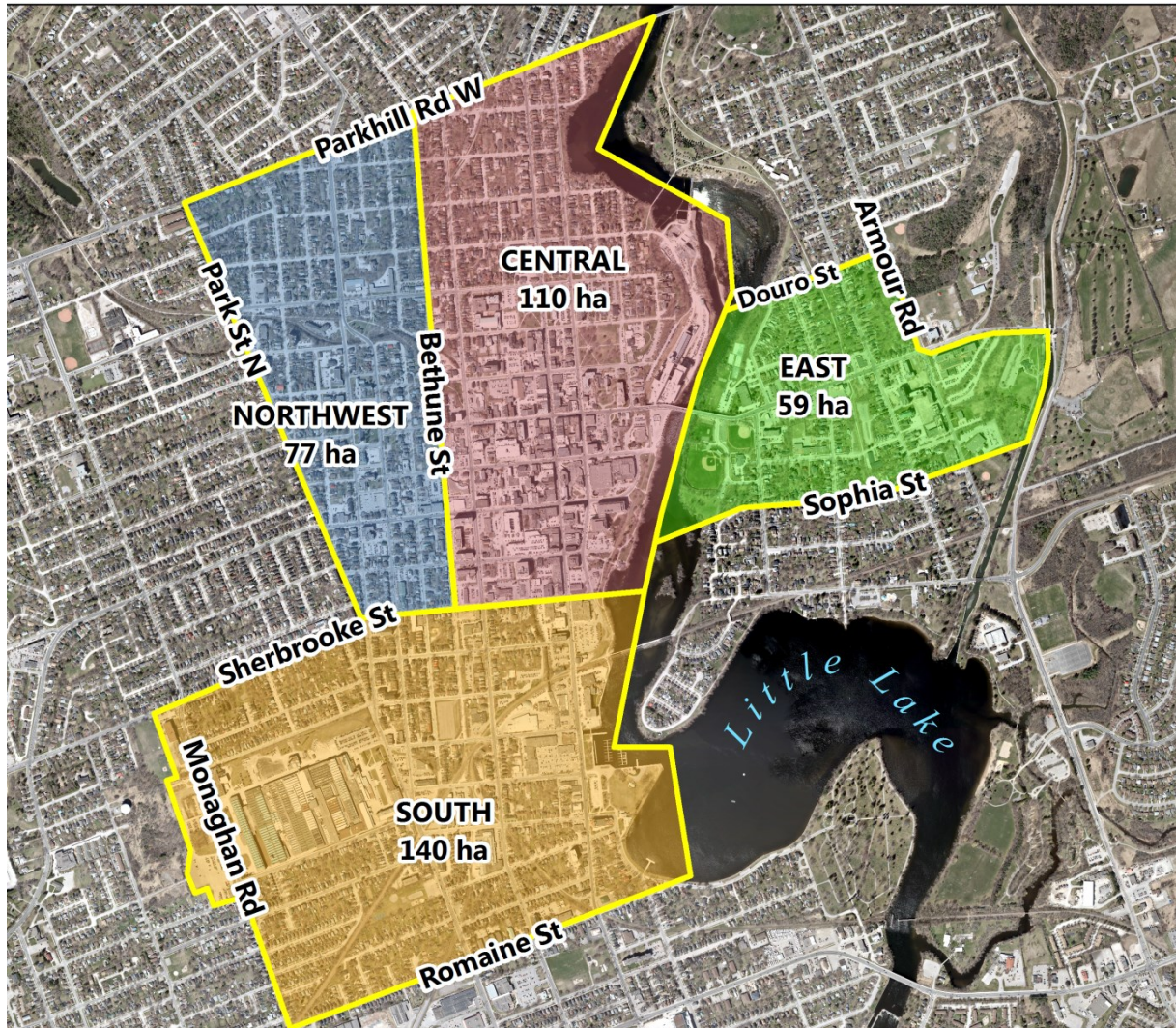


Downtown

Downtown



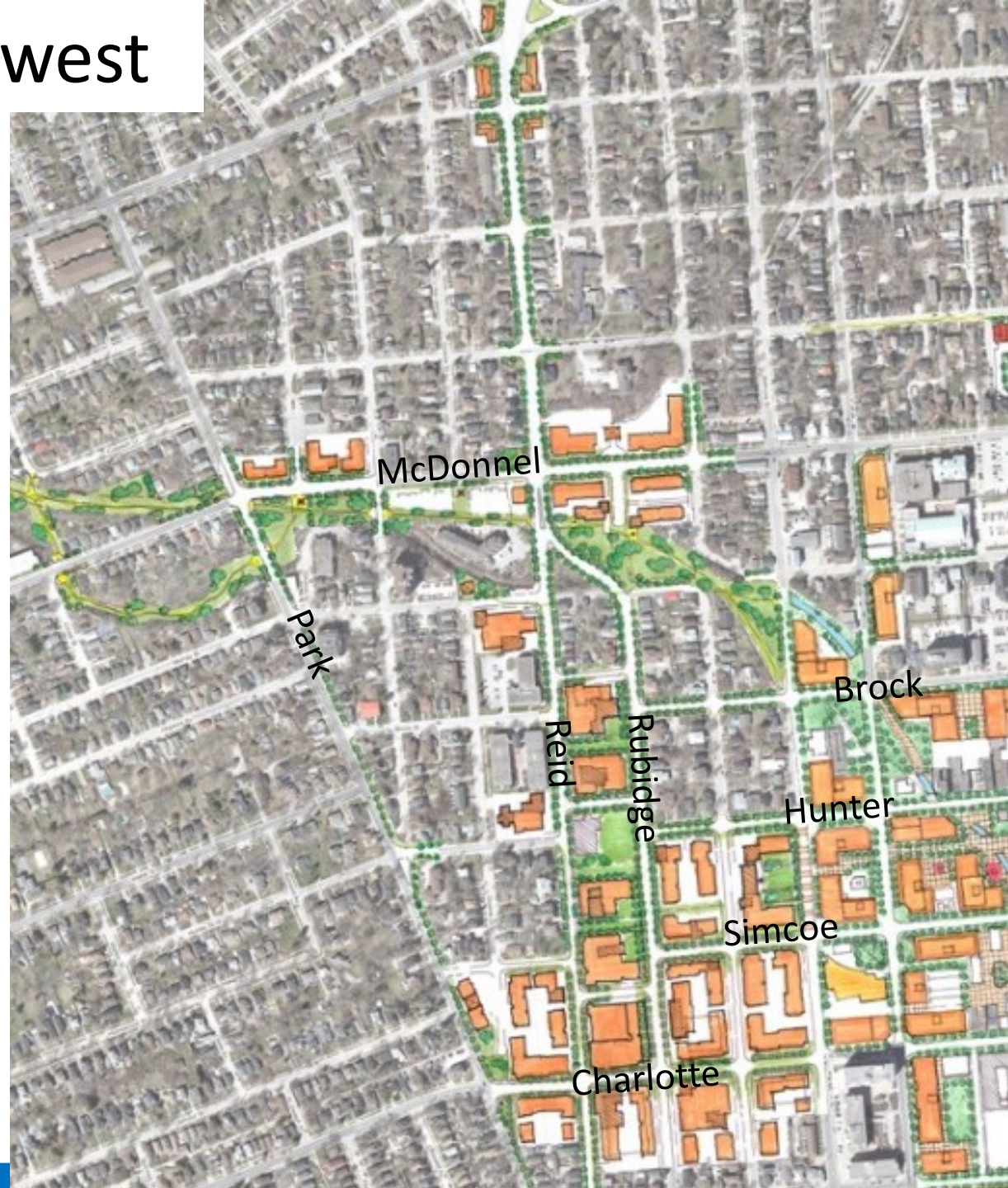
Downtown Areas of Interest



Northwest
Central
East
South

Downtown Northwest

- Charlotte Street is the anchor
- Churches are important civic/heritage resources
- 4-6 storey infill opportunities
- Greater intensification towards central downtown

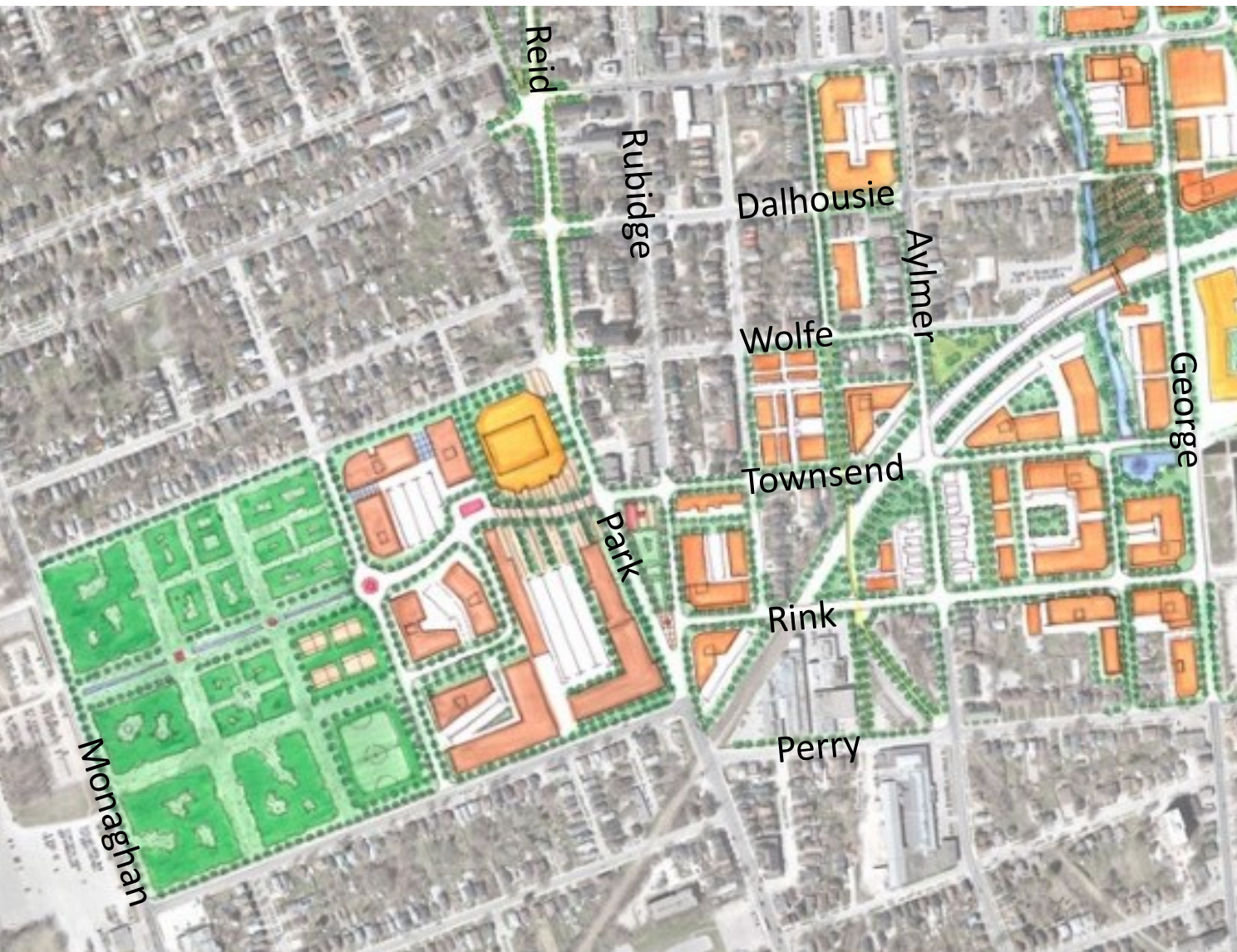


Downtown Central

- Heart of downtown – George & Water
- 6-8 storeys, potential for taller
- Public amenities with increased intensification



Downtown South



- Significant capacity for intensification
- 6 -8 storeys, potential for taller
- New streets
- George Street corridor

East City

- All change reinforces existing character
- Potential for 4 to 6 storeys on Hunter
- Greater potential on Armour



Downtown



New public spaces and streets

Downtown



New public spaces, Daylight Jackson Creek

Downtown



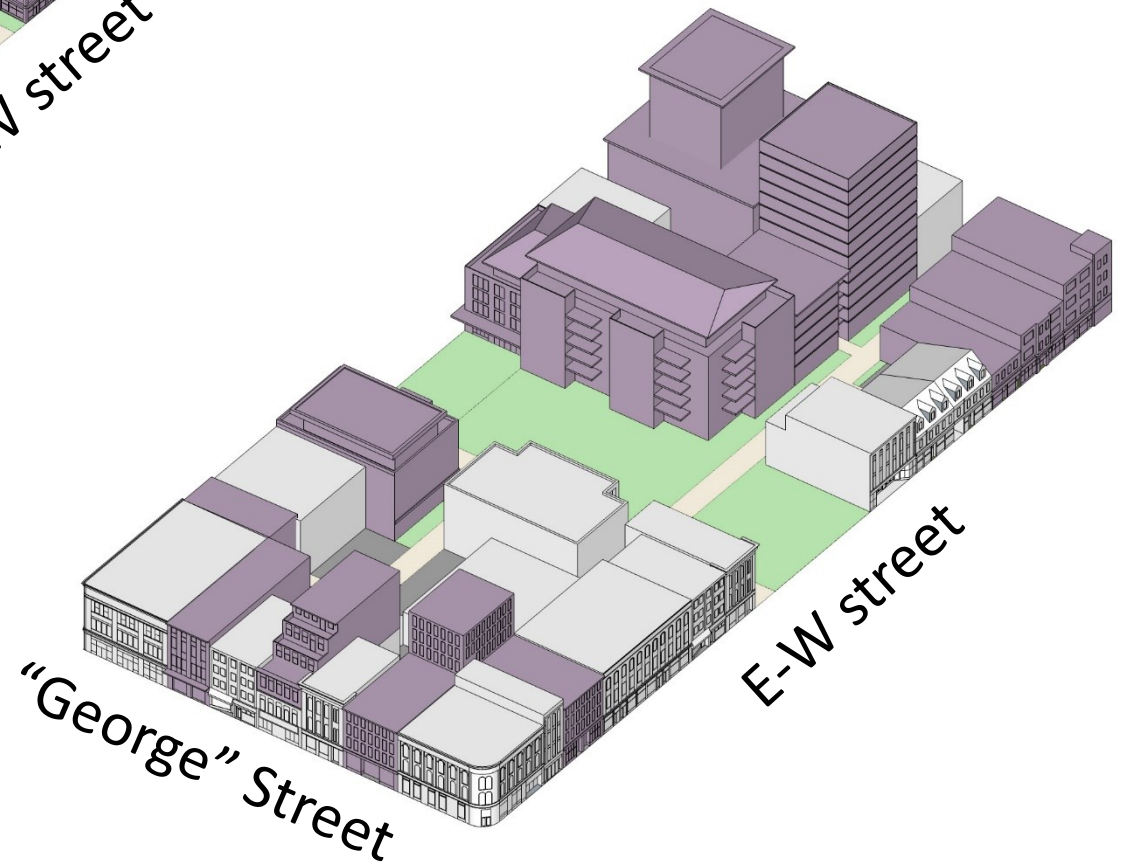
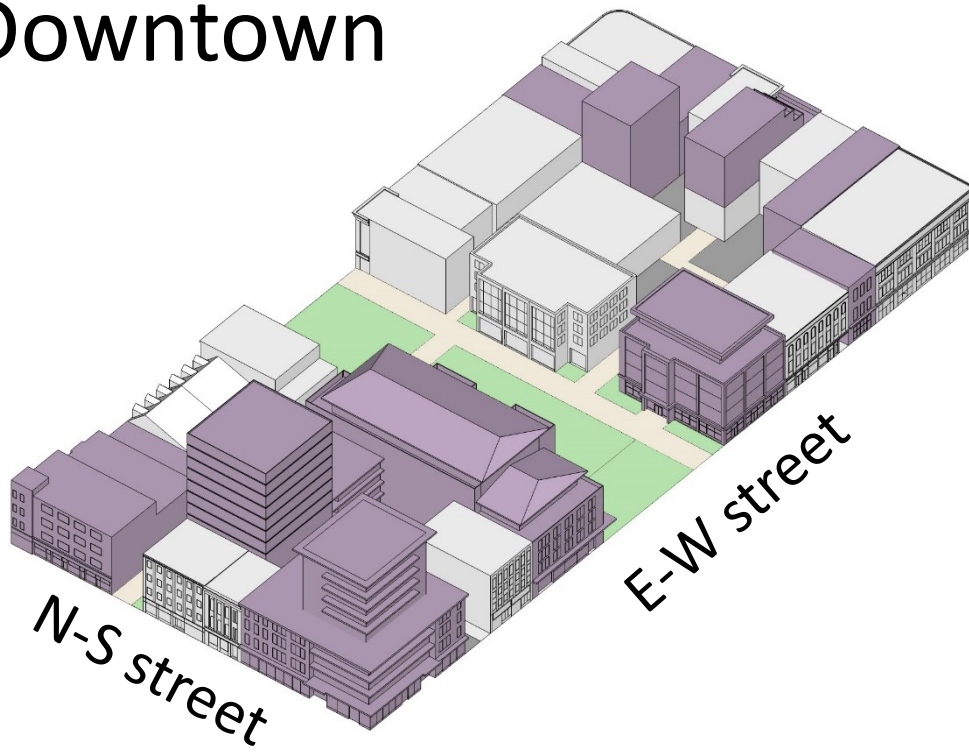
Massing of potential new development

Downtown



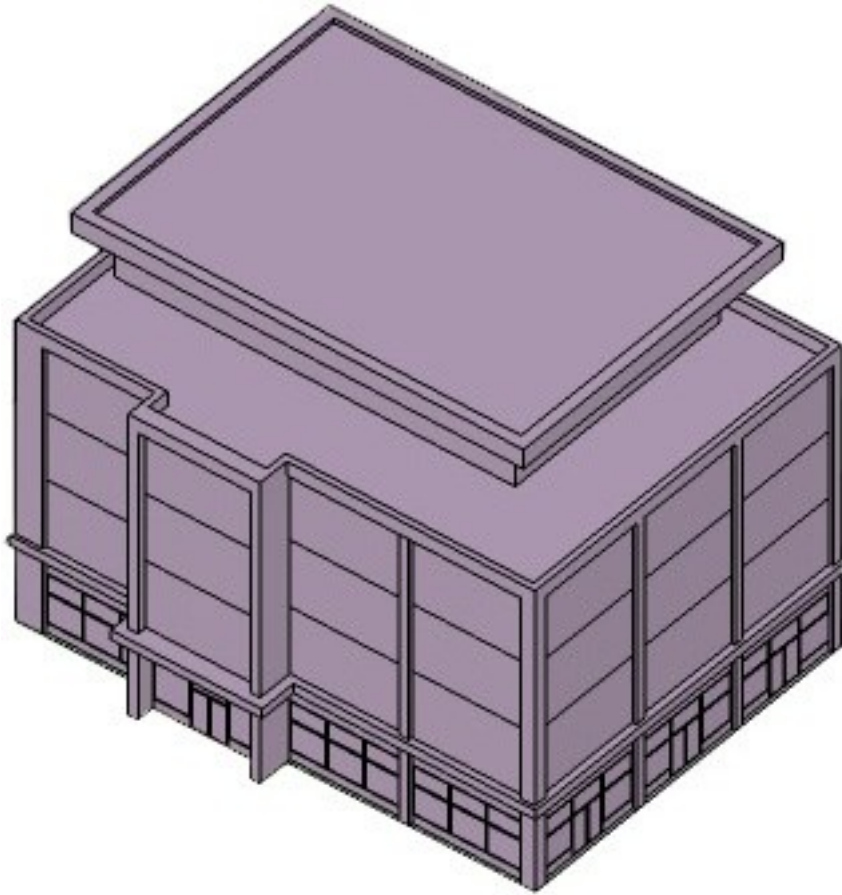
Significant capacity in south downtown

Downtown

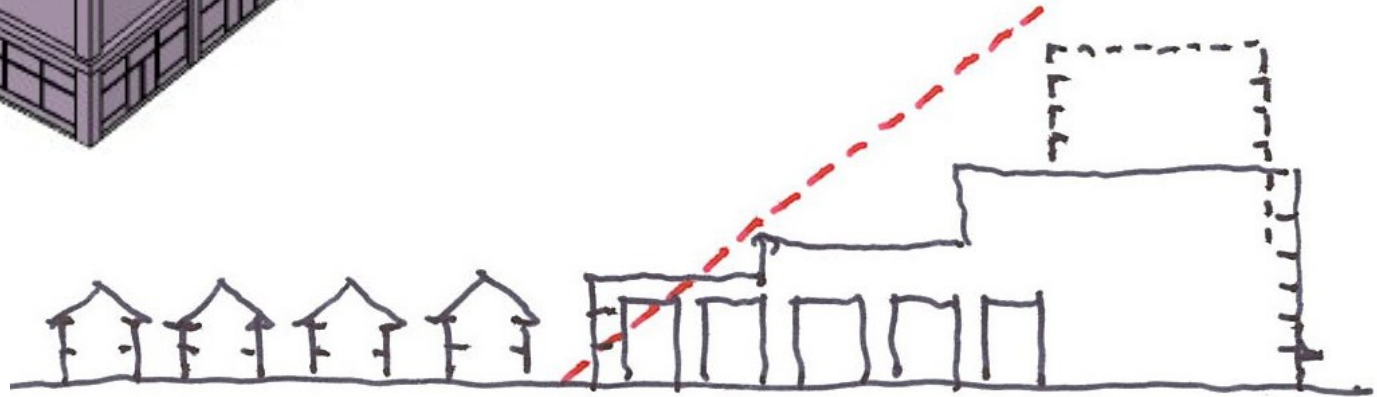


Demonstration of typical block

Downtown



Corners
Prominent Locations
Transitions
Street Wall
Ground floor design
Base-Middle-Top
Entrances
Parking & Servicing



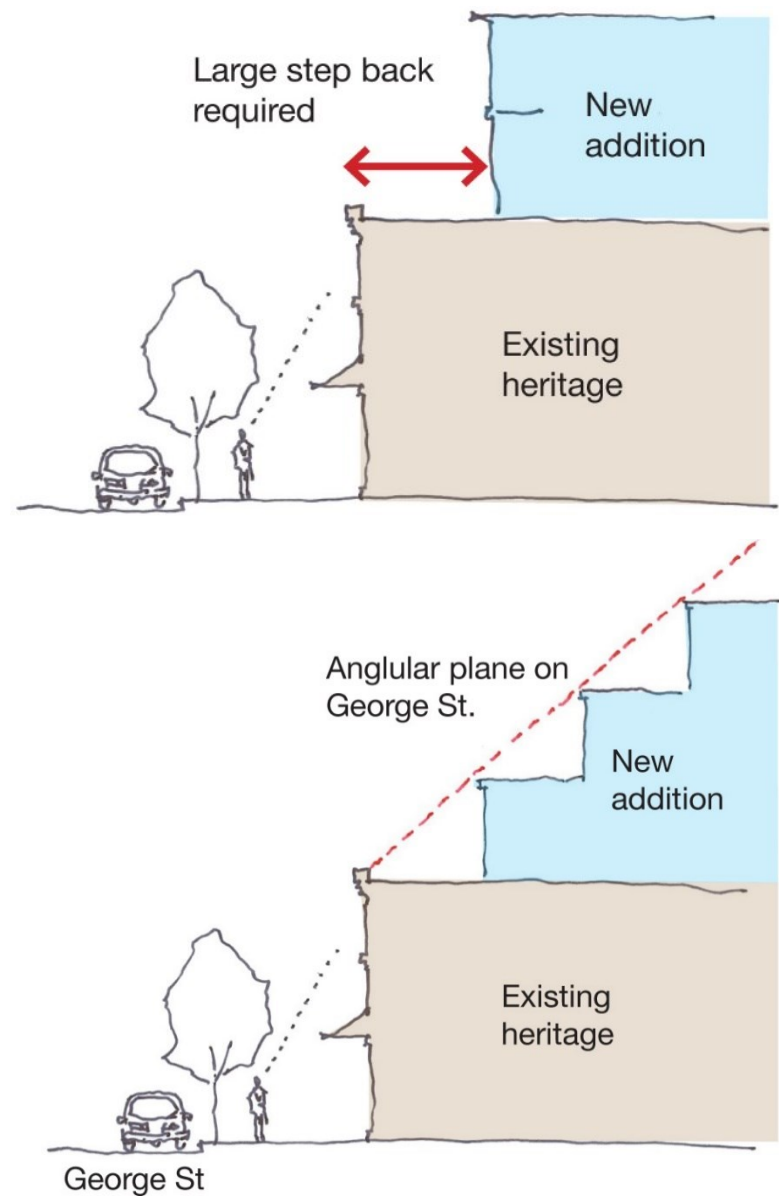
Built form guidelines

Downtown

Neighbourhood Streets

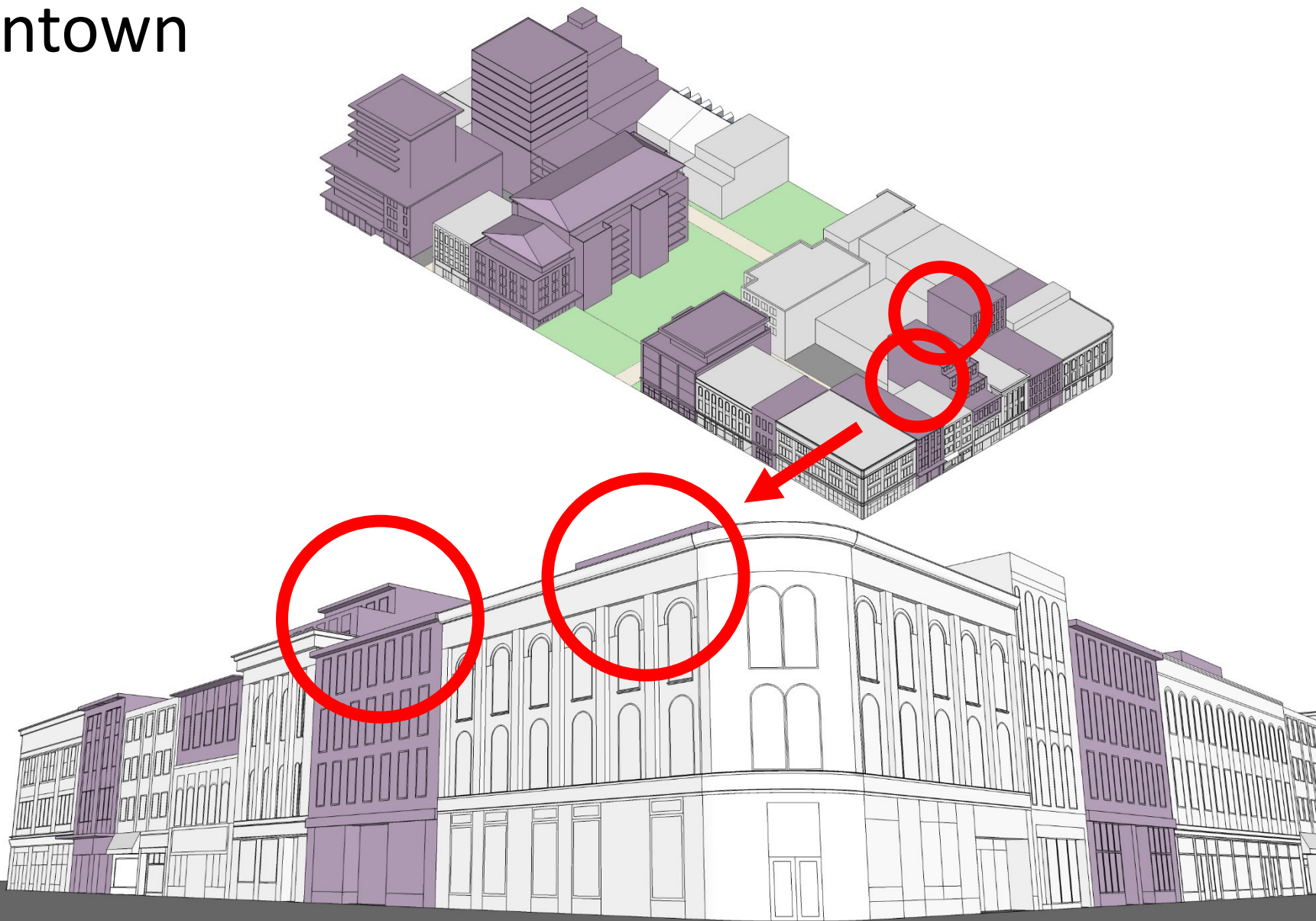


Urban Streets



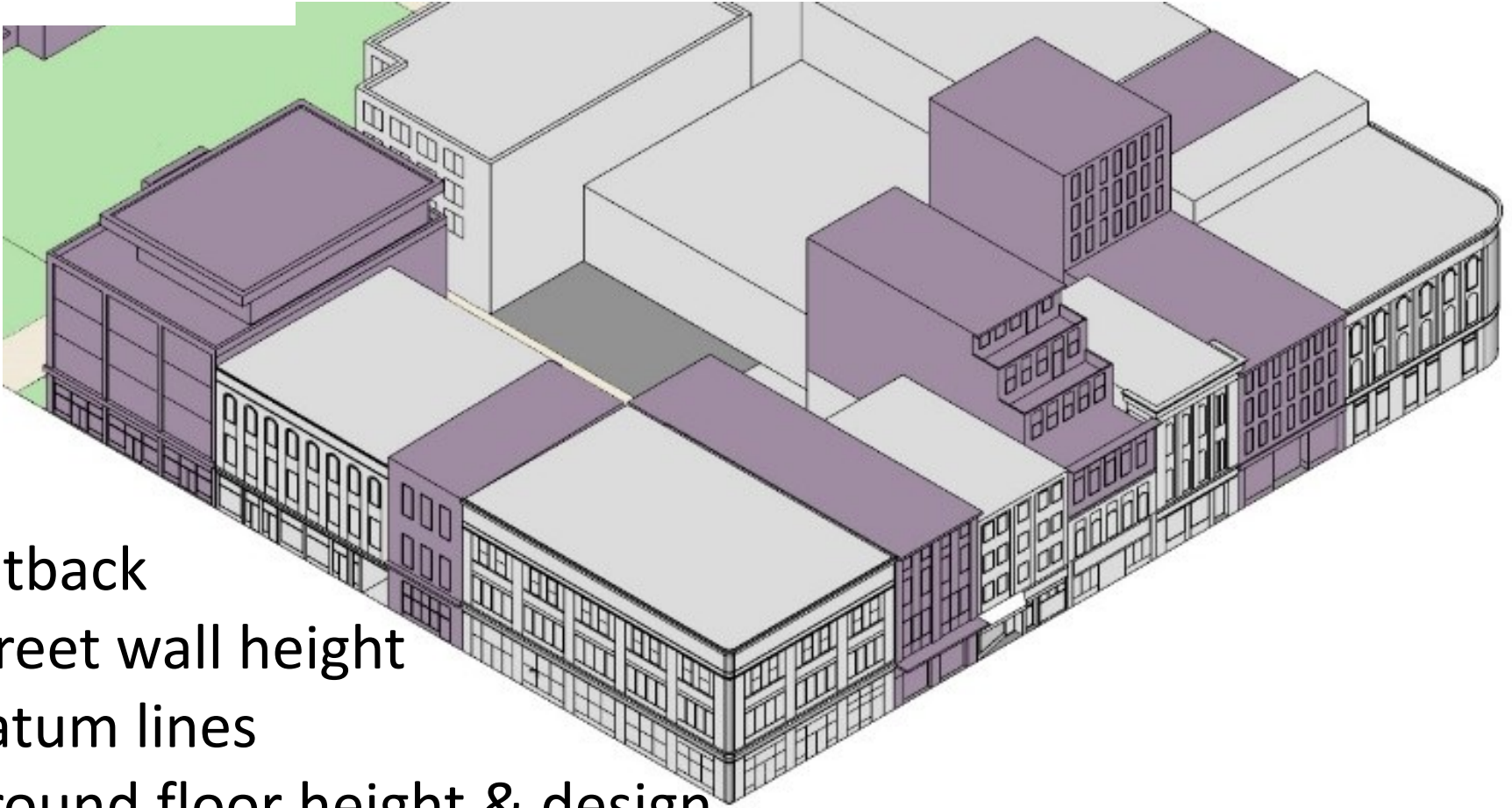
Character areas

Downtown



Character area guidelines

Downtown



Setback

Street wall height

Datum lines

Ground floor height & design

Step back

Integrated development

Prominent features

Heritage Guidelines

Downtown



Heritage guidelines

**Thank you to Peterborough residents who participated
in the Design Charrette to help build a
solid foundation for the Urban Design Guidelines and direction
for the Official Plan**

