

THE CORPORATION OF THE CITY OF PETERBOROUGH

BY-LAW NUMBER 10-(Clerk's office will assign the number)

BEING A BY-LAW TO AMEND THE ZONING BY-LAW FOR THE  
PROPERTIES AT 1800 TELEVISION ROAD, 450, 490 AND 520 LAURIE  
AVENUE

THE CORPORATION OF THE CITY OF PETERBOROUGH BY THE COUNCIL  
THEREOF HEREBY ENACTS AS FOLLOWS:

1. **Map 19** forming part of Schedule 'A' to By-law 97-123 is amended by changing the area shown on the sketch attached hereto as Schedule 'A' from **A2 (Otonabee), HL (Otonabee) and D.1 to R.1-162-"H"; from A2 (Otonabee) to R.1, 10a-162-"H"; from D.1, HL (Otonabee) and A2 (Otonabee) to R.1,4h-162-"H"; from D.1 and A2 (Otonabee) to R.1,4j,10a-162-"H"; from D.1, HL (Otonabee) and A2 (Otonabee) to R.1,1r,4h-162-"H"; from A2 (Otonabee) to R.1,1r,10a-162-"H"; from D.1 and A2 (Otonabee) to R.1,1r,4j-162-"H"; from HL (Otonabee) and A2 (Otonabee) to OS.1; and from D.1, HL (Otonabee) and A2 (Otonabee) to OS.2.**
2. The "H" – Holding Symbol will be removed upon registration of the Plan of Subdivision in the Land Registry Office.

By-law read a first, second and third time this     day of \_\_\_\_\_, 2010.

---

D. Paul Ayotte, Mayor

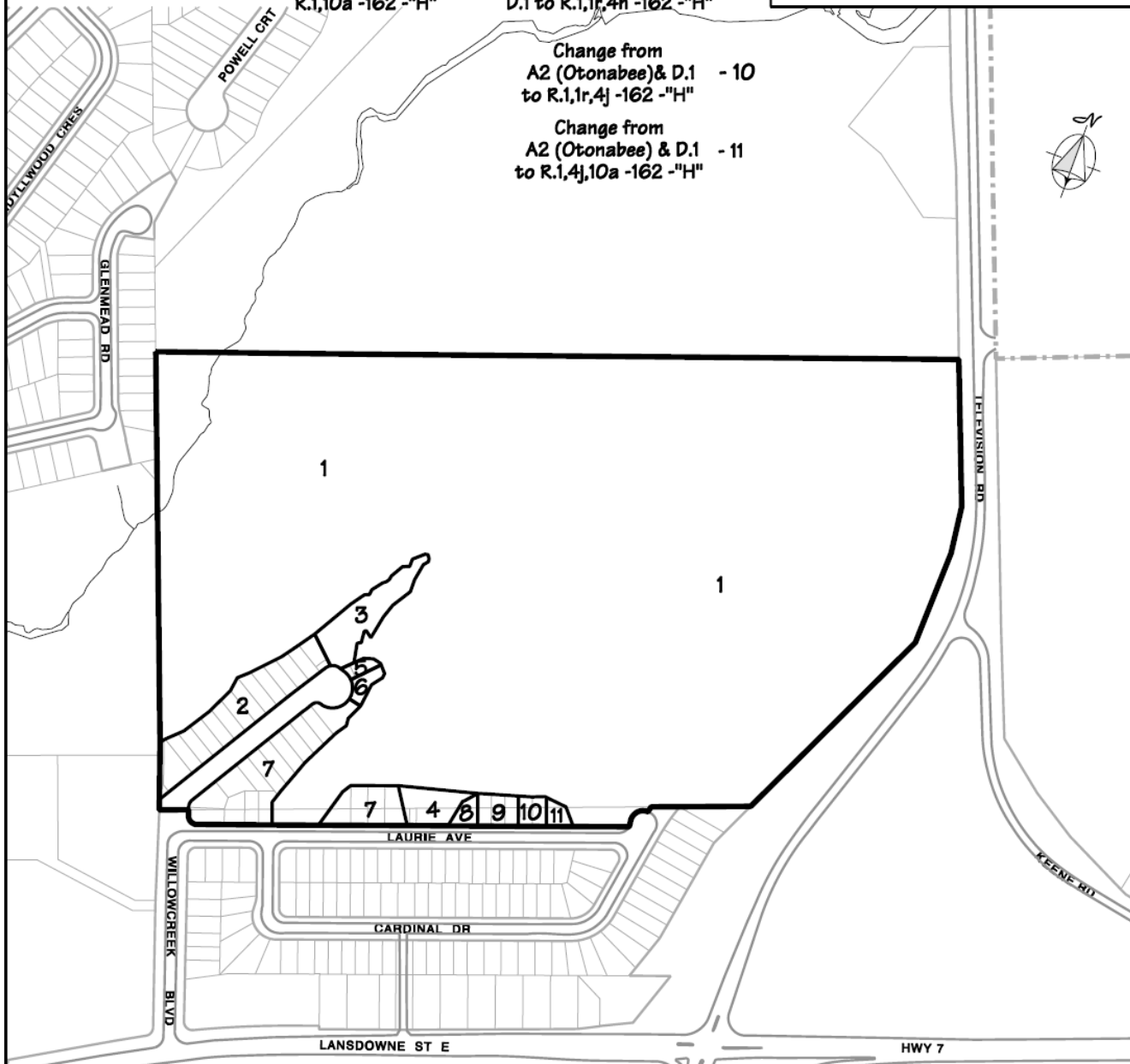
---

Nancy Wright-Laking, City Clerk

# Exhibit E Sheet 2 of 2

- |   |   |  |
|---|---|--|
| Change from<br>HL & A2 (Otonabee) - 1<br>to OS.1      | Change from<br>A2 & HL (Otonabee) - 4<br>& D.1 to OS.2          | Change from<br>A2 (Otonabee) & D.1 - 7<br>to R.1 - 162 -"H"            |
| Change from<br>A2 (Otonabee) - 2<br>to R.1 - 162 -"H" | Change from<br>A2 (Otonabee) - 5<br>to R.1,1r,10a<br>- 162 -"H" | Change from<br>A2 & HL (Otonabee) - 8<br>& D.1 to R.1,4h<br>- 162 -"H" |
| Change from<br>A2 (Otonabee) - 3<br>to OS.2           | Change from<br>A2 (Otonabee) to - 6<br>R.1,10a - 162 -"H"       | Change from<br>A2 & HL (Otonabee)& - 9<br>D.1 to R.1,1r,4h - 162 -"H"  |
|   |   | Change from<br>A2 (Otonabee)& D.1 - 10<br>to R.1,1r,4j - 162 -"H"      |
|   |   | Change from<br>A2 (Otonabee) & D.1 - 11<br>to R.1,4j,10a - 162 -"H"    |

SCHEDULE 'A' TO  
BYLAW 2010 -  
PASSED THE DAY  
OF 2010  
MAYOR  
CLERK



City of  
**Peterborough**

The "City of Peterborough," its employees, or agents, do not undertake to guarantee the validity of the contents of this digital or hardcopy mapfile, and will not be liable for any claims for damages or loss arising from their application or interpretation, by any party. It is not intended to replace a survey or to be used for legal description.

File: z1003sb Scale: 1:5000