

**THE CORPORATION OF THE CITY OF PETERBOROUGH**

**BY-LAW NUMBER 10-(Clerk's office will assign the number)**

**BEING A BY-LAW TO AMEND THE ZONING BY-LAW TO REMOVE A  
HOLDING SYMBOL FROM BLOCKS 81, 82, 83, 99 TO 104 AND LOTS  
1 TO 80, REGISTERED PLAN OF SUBDIVISION 45M-232 AND FROM  
BLOCK 42, REGISTERED PLAN OF SUBDIVISION 45M-221**

**WHEREAS** pursuant to Section 36 of the Planning Act, R.S.O., 1990, c.P.13, a Holding Symbol was applied to the above lands by By-law;

**AND WHEREAS**, in the opinion of Council, the condition for the removal of the Holding Symbol has been satisfied;

THE CORPORATION OF THE CITY OF PETERBOROUGH BY THE COUNCIL  
THEREOF HEREBY ENACTS AS FOLLOWS:

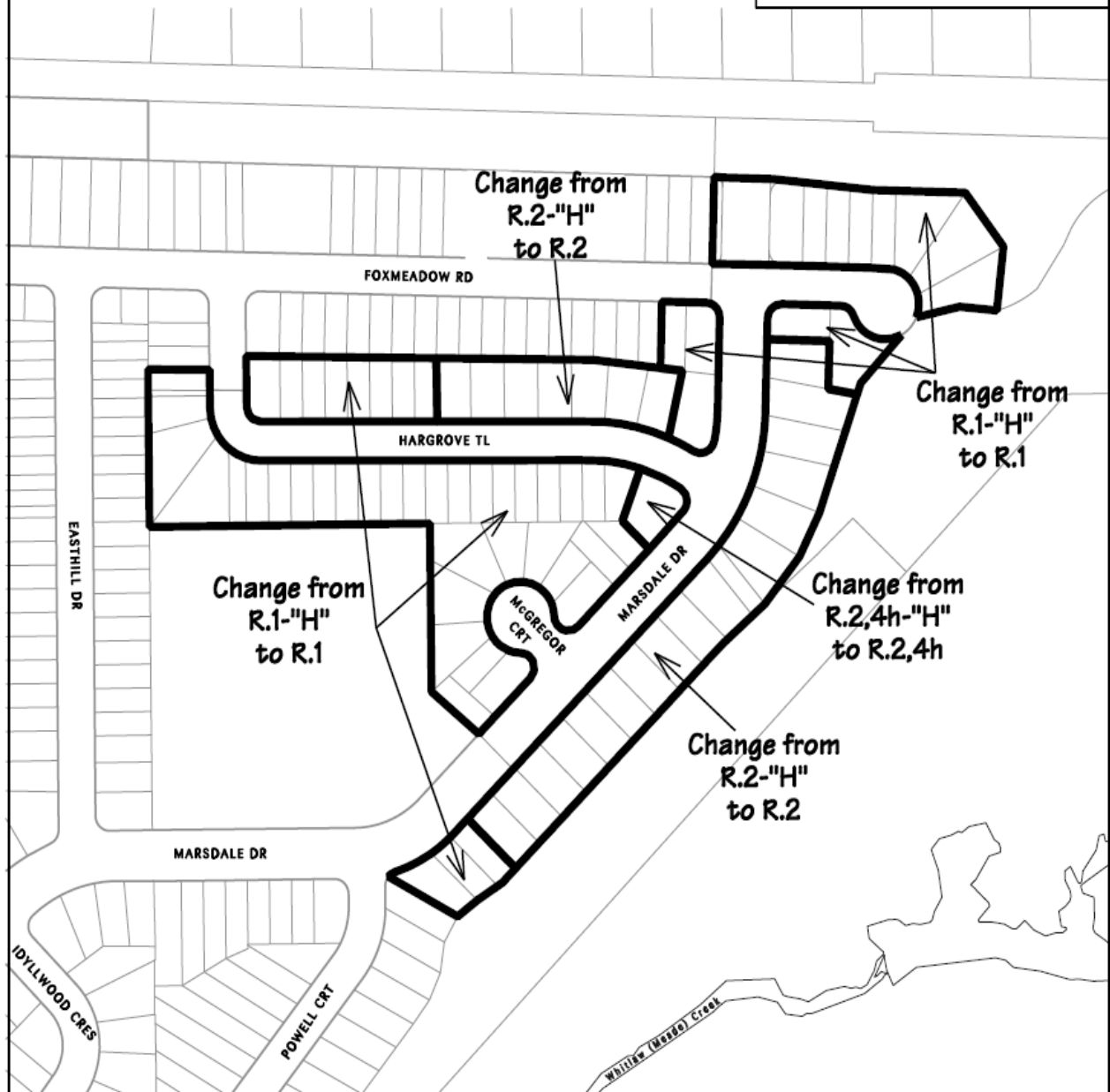
**Map 19** forming part of Schedule "A" to By-law 97-123 is amended by changing the area shown on the sketch attached hereto as Schedule "A" from **R.1 – "H"; R.2 – "H"; and R.2, 4h – "H" to R.1; R.2; and R.2, 4h.**

By-law read a first, second and third time this     day of \_\_\_\_\_, 2010.

\_\_\_\_\_  
D. Paul Ayotte, Mayor

\_\_\_\_\_  
Nancy Wright-Laking, City Clerk

SCHEDULE 'A' TO  
BYLAW 2010 -  
PASSED THE DAY  
OF 2010  
MAYOR  
CLERK



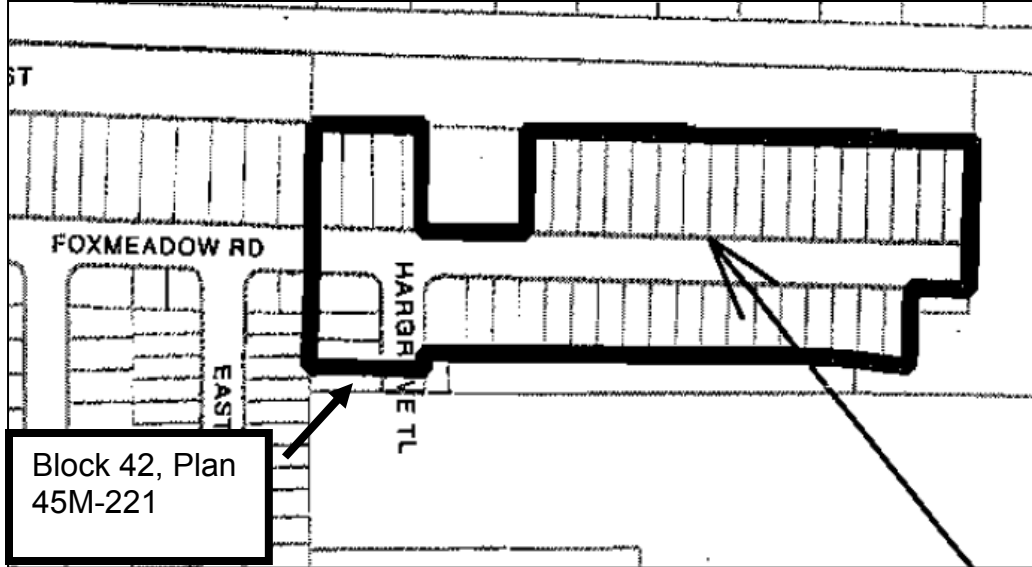
City of  
Peterborough

The "City of Peterborough," its employees, or agents, do not undertake to guarantee the validity of the contents of this digital or hardcopy mapfile, and will not be liable for any claims for damages or loss arising from their application or interpretation, by any party. It is not intended to replace a survey or to be used for legal description.

File: z0803sb, z0306sb  
and z0008sb

Scale: 1:3000

**Excerpt from Schedule A to Zoning By-law 08-034, A By-law to Remove a Holding Symbol from Plan of Subdivision 45M-221**



**Excerpt from Plan of Subdivision 45M-232 Showing Relationship between Block 81 and Block 42, 45M-221**

