

Land Use Map

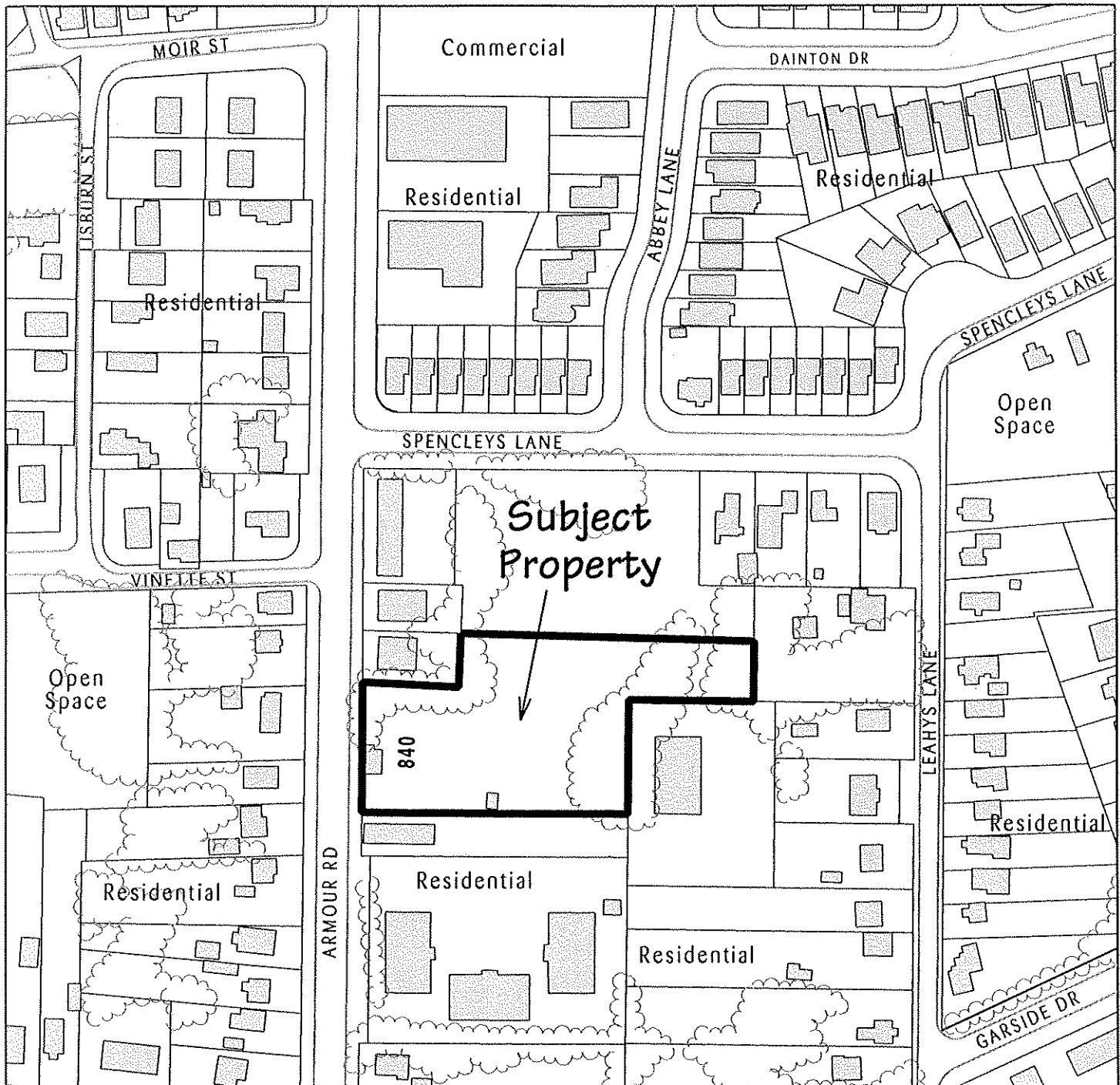
Exhibits - PLPD09-068

Page 1 of 7

EXHIBIT A
SHEET 1 OF 1

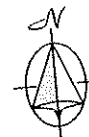
File # z0904

Property Location: 840 Armour Rd

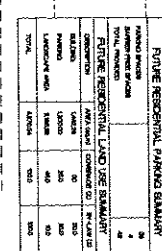


The City of Peterborough Planning Division

The "City of Peterborough," its employees, or agents, do not undertake to guarantee the validity of the contents of this digital or hardcopy mapfile, and will not be liable for any claims for damages or loss arising from their application or interpretation, by any party. It is not intended to replace a survey or to be used for legal description.



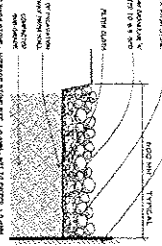
Date - October 2009
Dwg. by - CBerry
Scale - 1:2000



NOTES:

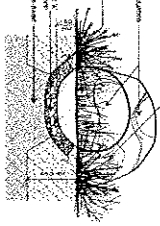
[illegible]EXHIBIT
SHEET.

B
4



VER WASH STONE

N.T.S.



ADDER & PLANTING * **N.T.S.**

N.T.S.

PETERBOROUGH
CHRISTIAN
FELLOWSHIP
CHURCH

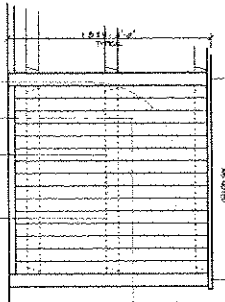
LANDSCAPE PLAN

| SCALE | PROJECT NO. | DATE | LAST REVISED | DWG NO. | OF |
|-------|-------------|----------|--------------|---------|----|
| 1:300 | 2911 | JUNE, 09 | JUNE, 09 | 1-1 | 1 |

WIND TOWER

 The Wind Tower Group, Inc. • 10000 Wind Tower Road • Suite 100 • Dallas, Texas 75243 • (214) 343-1111

MICHAEL B. MCGUIRE
1. APTED/CARE
2. APTED/CARE
3. APTED/CARE
4. APTED/CARE
5. APTED/CARE
6. APTED/CARE
7. APTED/CARE
8. APTED/CARE
9. APTED/CARE
10. APTED/CARE
11. APTED/CARE
12. APTED/CARE
13. APTED/CARE
14. APTED/CARE
15. APTED/CARE
16. APTED/CARE
17. APTED/CARE
18. APTED/CARE
19. APTED/CARE
20. APTED/CARE
21. APTED/CARE
22. APTED/CARE
23. APTED/CARE
24. APTED/CARE
25. APTED/CARE
26. APTED/CARE
27. APTED/CARE
28. APTED/CARE
29. APTED/CARE
30. APTED/CARE
31. APTED/CARE
32. APTED/CARE
33. APTED/CARE
34. APTED/CARE
35. APTED/CARE
36. APTED/CARE
37. APTED/CARE
38. APTED/CARE
39. APTED/CARE
40. APTED/CARE
41. APTED/CARE
42. APTED/CARE
43. APTED/CARE
44. APTED/CARE
45. APTED/CARE
46. APTED/CARE
47. APTED/CARE
48. APTED/CARE
49. APTED/CARE
50. APTED/CARE
51. APTED/CARE
52. APTED/CARE
53. APTED/CARE
54. APTED/CARE
55. APTED/CARE
56. APTED/CARE
57. APTED/CARE
58. APTED/CARE
59. APTED/CARE
60. APTED/CARE
61. APTED/CARE
62. APTED/CARE
63. APTED/CARE
64. APTED/CARE
65. APTED/CARE
66. APTED/CARE
67. APTED/CARE
68. APTED/CARE
69. APTED/CARE
70. APTED/CARE
71. APTED/CARE
72. APTED/CARE
73. APTED/CARE
74. APTED/CARE
75. APTED/CARE
76. APTED/CARE
77. APTED/CARE
78. APTED/CARE
79. APTED/CARE
80. APTED/CARE
81. APTED/CARE
82. APTED/CARE
83. APTED/CARE
84. APTED/CARE
85. APTED/CARE
86. APTED/CARE
87. APTED/CARE
88. APTED/CARE
89. APTED/CARE
90. APTED/CARE
91. APTED/CARE
92. APTED/CARE
93. APTED/CARE
94. APTED/CARE
95. APTED/CARE
96. APTED/CARE
97. APTED/CARE
98. APTED/CARE
99. APTED/CARE
100. APTED/CARE

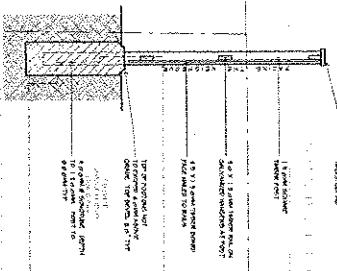


NOTE:

- All studies that have shown a strong physical relationship between the two variables are marked with a (+) and a weak relationship with a (-).
- All arrows to be made in the opposite direction of the arrow.
- All arrows to be made in the opposite direction of the arrow.

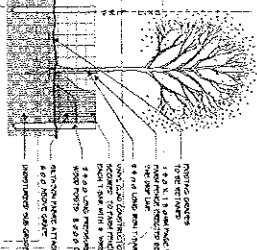
TIMBER PRIVITY SCREEN

SIN

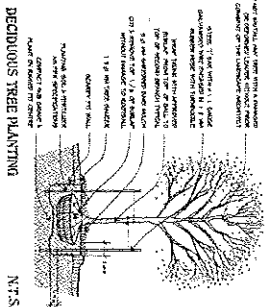
[illegible]

TREE PRESERVATION BOARD

34.7.5.

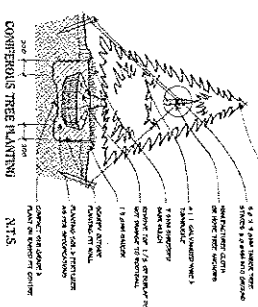


THE SCHEDULE OF PLANTS

[illegible]

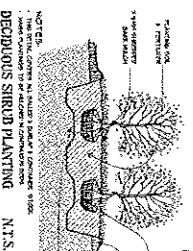
DECIDUOUS TREE PLANTING

N.T.S.



CONFIDENTIAL TREE PLANTING

NYT5.



- THIN PETITE, CORTINA MIL
- JAMES CAGNEY TO GET A

DECIDUOUS SH

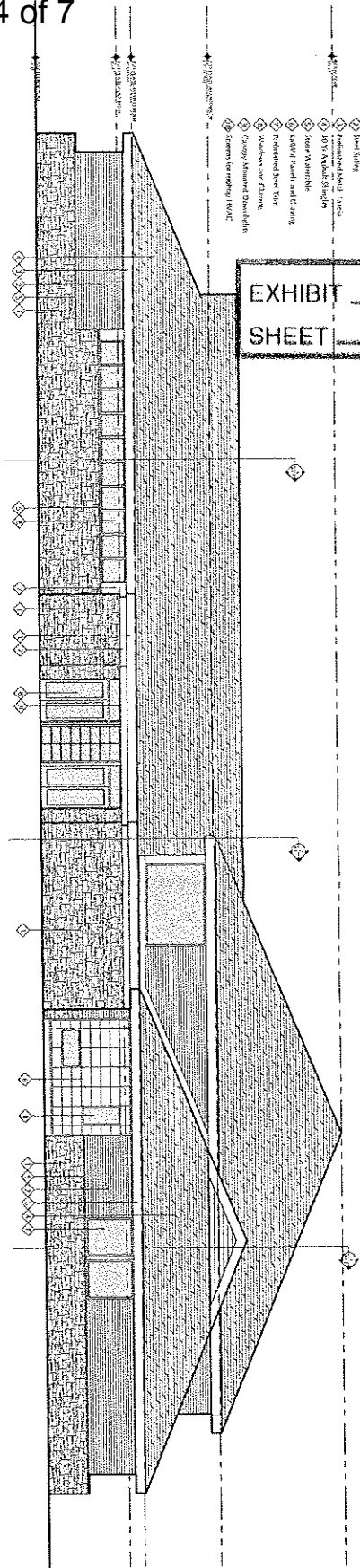
N.Y.S.



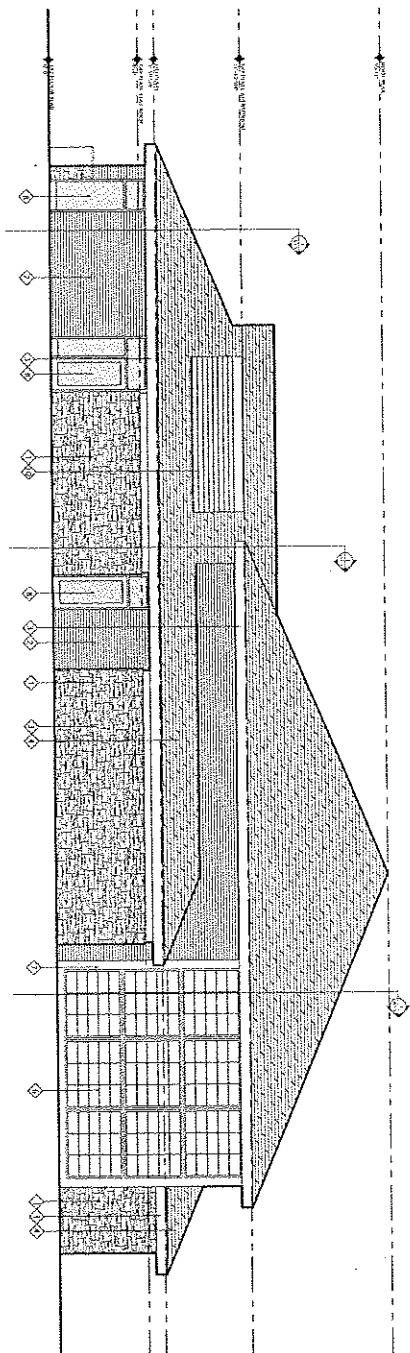
WIND TOWER
The Wind Tower is a unique, modern, and elegant structure that provides a perfect blend of style and functionality. It is designed to withstand the harshest weather conditions, ensuring your investment is protected for years to come. The tower's sleek, aerodynamic design allows for easy installation and maintenance, making it a hassle-free choice for your business. The tower's interior is spacious and well-lit, providing a comfortable environment for your business. The tower's exterior is made of high-quality materials, ensuring it looks as good as it performs. The tower's design is both functional and aesthetically pleasing, making it a perfect addition to any business. The tower's construction is solid and durable, ensuring it can withstand the harshest weather conditions. The tower's design is both functional and aesthetically pleasing, making it a perfect addition to any business. The tower's construction is solid and durable, ensuring it can withstand the harshest weather conditions.

- Coloured Stone
- Stone Siding
- Industrial Metal Pipes
- 30" x 30" Square Grilles
- Steel Axminster
- Exterior Paint and Cladding
- Painted Steel Trim
- Windows and Doors
- Ceiling Mounting Brackets
- Screens for Roofing HVAC

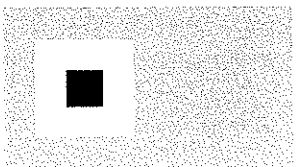
EXHIBIT B
SHEET 3 OF 4



EAST ELEVATION



SOUTH ELEVATION



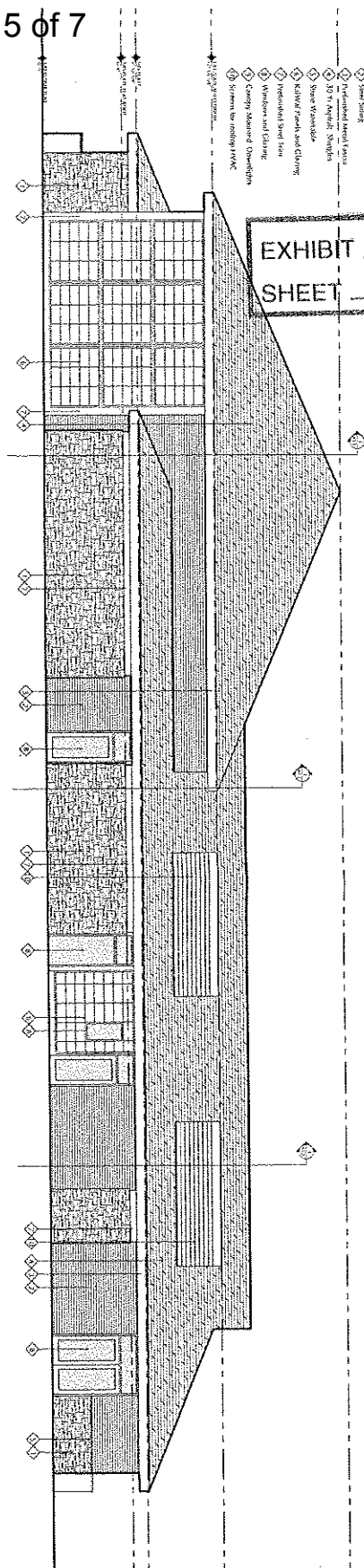
new ARCHITECTURE
208 - 311 George Street N
Peterborough, ON
K9J 3H3
705.741.5330 office
705.749.2534 fax
www.newarchitecture.ca

| NO. | REVISIONS | DATE |
|------|----------------------------|------------|
| 1. | ISSUED FOR PERMIT | 2009-04-14 |
| 2. | REVISED TO REFLECT CHANGES | 2009-04-14 |
| 3. | REVISED TO REFLECT CHANGES | 2009-04-14 |
| 4. | REVISED TO REFLECT CHANGES | 2009-04-14 |
| 5. | REVISED TO REFLECT CHANGES | 2009-04-14 |
| 6. | REVISED TO REFLECT CHANGES | 2009-04-14 |
| 7. | REVISED TO REFLECT CHANGES | 2009-04-14 |
| 8. | REVISED TO REFLECT CHANGES | 2009-04-14 |
| 9. | REVISED TO REFLECT CHANGES | 2009-04-14 |
| 10. | REVISED TO REFLECT CHANGES | 2009-04-14 |
| 11. | REVISED TO REFLECT CHANGES | 2009-04-14 |
| 12. | REVISED TO REFLECT CHANGES | 2009-04-14 |
| 13. | REVISED TO REFLECT CHANGES | 2009-04-14 |
| 14. | REVISED TO REFLECT CHANGES | 2009-04-14 |
| 15. | REVISED TO REFLECT CHANGES | 2009-04-14 |
| 16. | REVISED TO REFLECT CHANGES | 2009-04-14 |
| 17. | REVISED TO REFLECT CHANGES | 2009-04-14 |
| 18. | REVISED TO REFLECT CHANGES | 2009-04-14 |
| 19. | REVISED TO REFLECT CHANGES | 2009-04-14 |
| 20. | REVISED TO REFLECT CHANGES | 2009-04-14 |
| 21. | REVISED TO REFLECT CHANGES | 2009-04-14 |
| 22. | REVISED TO REFLECT CHANGES | 2009-04-14 |
| 23. | REVISED TO REFLECT CHANGES | 2009-04-14 |
| 24. | REVISED TO REFLECT CHANGES | 2009-04-14 |
| 25. | REVISED TO REFLECT CHANGES | 2009-04-14 |
| 26. | REVISED TO REFLECT CHANGES | 2009-04-14 |
| 27. | REVISED TO REFLECT CHANGES | 2009-04-14 |
| 28. | REVISED TO REFLECT CHANGES | 2009-04-14 |
| 29. | REVISED TO REFLECT CHANGES | 2009-04-14 |
| 30. | REVISED TO REFLECT CHANGES | 2009-04-14 |
| 31. | REVISED TO REFLECT CHANGES | 2009-04-14 |
| 32. | REVISED TO REFLECT CHANGES | 2009-04-14 |
| 33. | REVISED TO REFLECT CHANGES | 2009-04-14 |
| 34. | REVISED TO REFLECT CHANGES | 2009-04-14 |
| 35. | REVISED TO REFLECT CHANGES | 2009-04-14 |
| 36. | REVISED TO REFLECT CHANGES | 2009-04-14 |
| 37. | REVISED TO REFLECT CHANGES | 2009-04-14 |
| 38. | REVISED TO REFLECT CHANGES | 2009-04-14 |
| 39. | REVISED TO REFLECT CHANGES | 2009-04-14 |
| 40. | REVISED TO REFLECT CHANGES | 2009-04-14 |
| 41. | REVISED TO REFLECT CHANGES | 2009-04-14 |
| 42. | REVISED TO REFLECT CHANGES | 2009-04-14 |
| 43. | REVISED TO REFLECT CHANGES | 2009-04-14 |
| 44. | REVISED TO REFLECT CHANGES | 2009-04-14 |
| 45. | REVISED TO REFLECT CHANGES | 2009-04-14 |
| 46. | REVISED TO REFLECT CHANGES | 2009-04-14 |
| 47. | REVISED TO REFLECT CHANGES | 2009-04-14 |
| 48. | REVISED TO REFLECT CHANGES | 2009-04-14 |
| 49. | REVISED TO REFLECT CHANGES | 2009-04-14 |
| 50. | REVISED TO REFLECT CHANGES | 2009-04-14 |
| 51. | REVISED TO REFLECT CHANGES | 2009-04-14 |
| 52. | REVISED TO REFLECT CHANGES | 2009-04-14 |
| 53. | REVISED TO REFLECT CHANGES | 2009-04-14 |
| 54. | REVISED TO REFLECT CHANGES | 2009-04-14 |
| 55. | REVISED TO REFLECT CHANGES | 2009-04-14 |
| 56. | REVISED TO REFLECT CHANGES | 2009-04-14 |
| 57. | REVISED TO REFLECT CHANGES | 2009-04-14 |
| 58. | REVISED TO REFLECT CHANGES | 2009-04-14 |
| 59. | REVISED TO REFLECT CHANGES | 2009-04-14 |
| 60. | REVISED TO REFLECT CHANGES | 2009-04-14 |
| 61. | REVISED TO REFLECT CHANGES | 2009-04-14 |
| 62. | REVISED TO REFLECT CHANGES | 2009-04-14 |
| 63. | REVISED TO REFLECT CHANGES | 2009-04-14 |
| 64. | REVISED TO REFLECT CHANGES | 2009-04-14 |
| 65. | REVISED TO REFLECT CHANGES | 2009-04-14 |
| 66. | REVISED TO REFLECT CHANGES | 2009-04-14 |
| 67. | REVISED TO REFLECT CHANGES | 2009-04-14 |
| 68. | REVISED TO REFLECT CHANGES | 2009-04-14 |
| 69. | REVISED TO REFLECT CHANGES | 2009-04-14 |
| 70. | REVISED TO REFLECT CHANGES | 2009-04-14 |
| 71. | REVISED TO REFLECT CHANGES | 2009-04-14 |
| 72. | REVISED TO REFLECT CHANGES | 2009-04-14 |
| 73. | REVISED TO REFLECT CHANGES | 2009-04-14 |
| 74. | REVISED TO REFLECT CHANGES | 2009-04-14 |
| 75. | REVISED TO REFLECT CHANGES | 2009-04-14 |
| 76. | REVISED TO REFLECT CHANGES | 2009-04-14 |
| 77. | REVISED TO REFLECT CHANGES | 2009-04-14 |
| 78. | REVISED TO REFLECT CHANGES | 2009-04-14 |
| 79. | REVISED TO REFLECT CHANGES | 2009-04-14 |
| 80. | REVISED TO REFLECT CHANGES | 2009-04-14 |
| 81. | REVISED TO REFLECT CHANGES | 2009-04-14 |
| 82. | REVISED TO REFLECT CHANGES | 2009-04-14 |
| 83. | REVISED TO REFLECT CHANGES | 2009-04-14 |
| 84. | REVISED TO REFLECT CHANGES | 2009-04-14 |
| 85. | REVISED TO REFLECT CHANGES | 2009-04-14 |
| 86. | REVISED TO REFLECT CHANGES | 2009-04-14 |
| 87. | REVISED TO REFLECT CHANGES | 2009-04-14 |
| 88. | REVISED TO REFLECT CHANGES | 2009-04-14 |
| 89. | REVISED TO REFLECT CHANGES | 2009-04-14 |
| 90. | REVISED TO REFLECT CHANGES | 2009-04-14 |
| 91. | REVISED TO REFLECT CHANGES | 2009-04-14 |
| 92. | REVISED TO REFLECT CHANGES | 2009-04-14 |
| 93. | REVISED TO REFLECT CHANGES | 2009-04-14 |
| 94. | REVISED TO REFLECT CHANGES | 2009-04-14 |
| 95. | REVISED TO REFLECT CHANGES | 2009-04-14 |
| 96. | REVISED TO REFLECT CHANGES | 2009-04-14 |
| 97. | REVISED TO REFLECT CHANGES | 2009-04-14 |
| 98. | REVISED TO REFLECT CHANGES | 2009-04-14 |
| 99. | REVISED TO REFLECT CHANGES | 2009-04-14 |
| 100. | REVISED TO REFLECT CHANGES | 2009-04-14 |

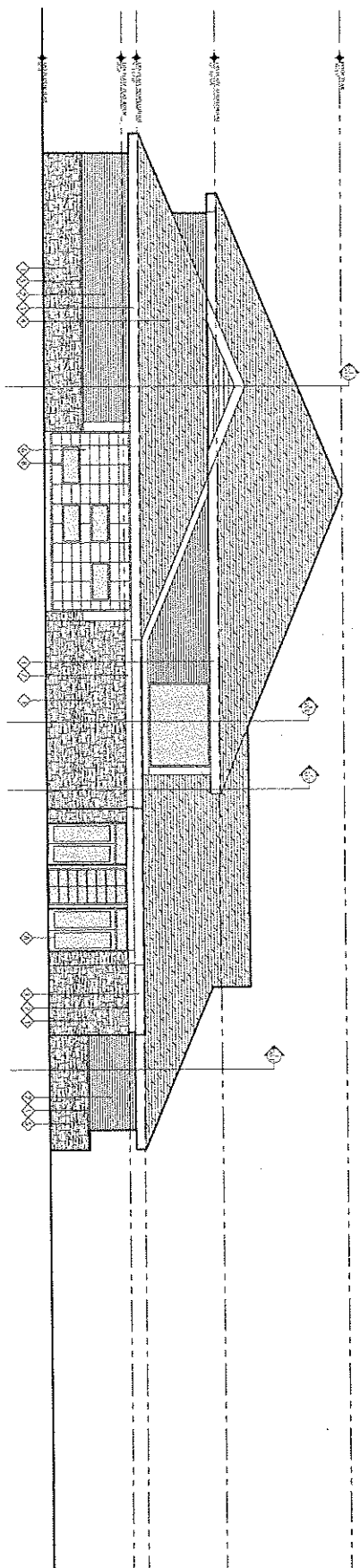
CLIENT: WIND TOWER
15, 4TH STREET
PETERBOROUGH, ON
PROJECT: PETERBOROUGH CHRISTIAN FELLOWSHIP CHURCH
445 ARTHUR ROAD
PETERBOROUGH, ONTARIO
OWNER: WIND TOWER
EVP: WIND TOWER
PROJECT NO: 08-12
DRAWING NO: A-2.1

- 1 Customized Service
- 2 Speed of Service
- 3 Performance Match Factor
(as measured by the
customer)
- 4 30-70 Amphib. Shovels
- 5 Stone Washdown
- 6 Natural Pumps and Churns
- 7 Presidential Steel Ties
- 8 Workforce and Clientele
- 9 Company Absence of Overtyping
- 10 Screens for roofing PVCAC

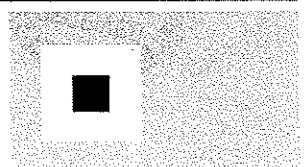
EXHIBIT B
SHEET 4 OF 4



WEST ELEVATION
SCALE: 1/8" = 1'-0"



2
NORTH ELEVATION
SCALE 3/16" = 1'-0"

new
ARCHITECTURE

208 - 311 George Street N
Peterborough, ON
K9A 1A2

NY 373

705.741.6330 office
705.749.2534 fax

www.newarchitecture.ca

| NO. | REVISIONS | DATE |
|-----|-----------|------|
|-----|-----------|------|

[illegible]

| NO. | ISSUED | DATE |
|-----|---------------------------------|---------|
| 1. | RECEIVED FROM CLIENT FOR REPAIR | 2009-03 |
| 2. | RECEIVED FROM CLIENT FOR REPAIR | 2009-03 |
| 3. | RECEIVED FROM CLIENT FOR REPAIR | 2009-03 |
| 4. | RECEIVED FROM CLIENT FOR REPAIR | 2009-03 |

WIND TOWELS
10-4TH STREET
Fenton Falls, ON

PETERBOROUGH CHRISTIAN
FELLOWSHIP CHURCH

840 ARMOUR ROAD
PETERBOROUGH, ONTARIO

BUILDING
ELEVATIONS

| | |
|-----------------------|----------------------|
| DEVELOPED BY EWM | CONDUCTED BY EWM |
| BOEING 3150-1-1-07 | PROJECT NO. OS-12 |

A-2.2.2

| | |
|---------|--------|
| EXHIBIT | C |
| SHEET | 1 OF 2 |

THE CORPORATION OF THE CITY OF PETERBOROUGH

BY-LAW NUMBER 09-_____

BEING A BY-LAW TO AMEND THE ZONING BY-LAW
FOR 840 ARMOUR ROAD

THE CORPORATION OF THE CITY OF PETERBOROUGH BY THE COUNCIL
THEREOF HEREBY ENACTS AS FOLLOWS:

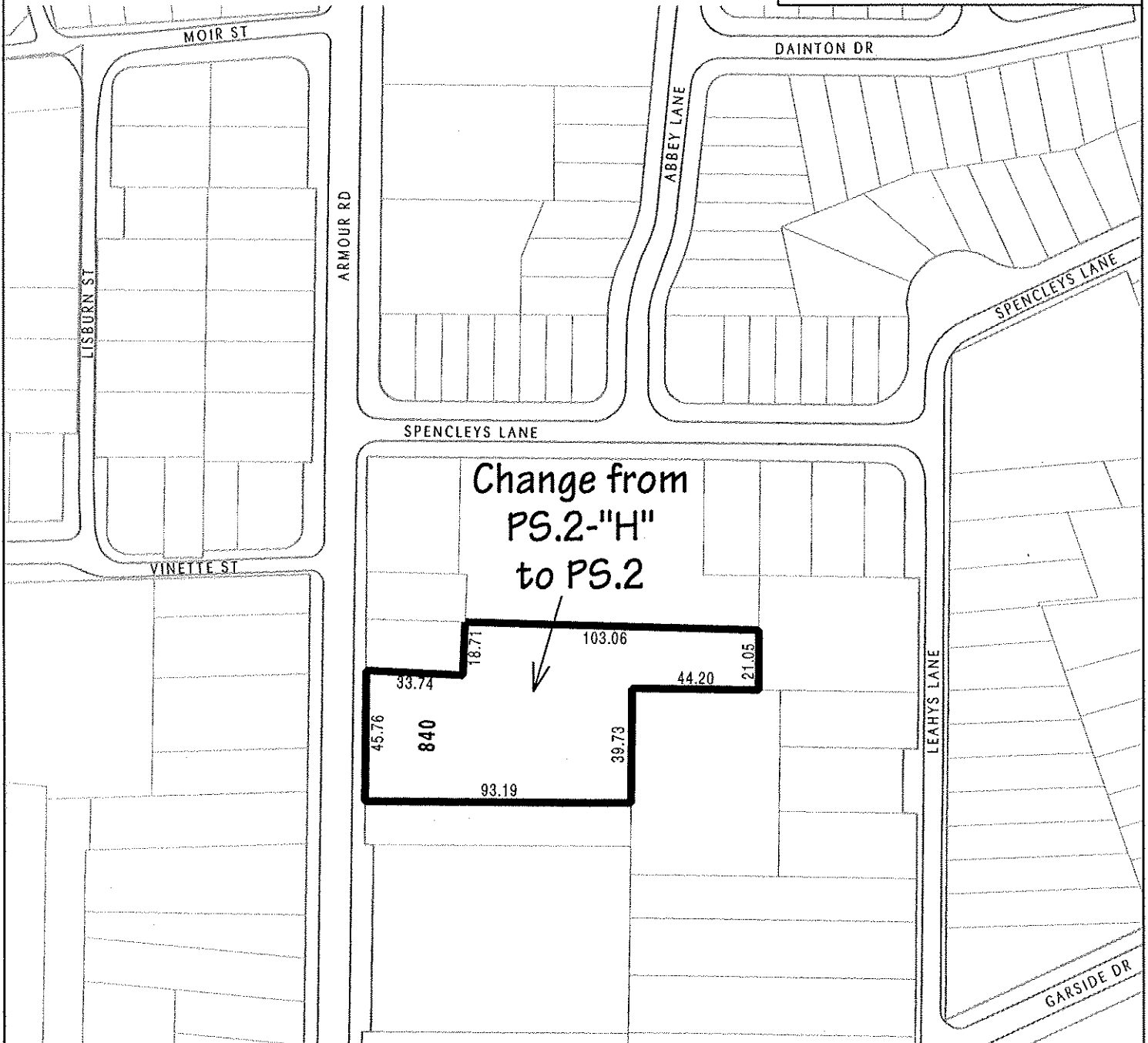
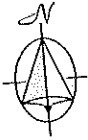
1. **Map 8b** forming part of Schedule "A" to By-law 97-123 is amended by changing the area shown on the sketch attached hereto as Schedule "A" from PS.2 – "H" to PS.2.

By-law read a first, second and third time this 16th day of November, 2009.

D. Paul Ayotte, Mayor

Nancy Wright-Laking, City Clerk

SCHEDULE 'A' TO
BYLAW 2009 -
PASSED THE DAY
OF 2009
MAYOR
CLERK



City of
Peterborough

EXHIBIT C
SHEET 2 OF 2