

*Peterborough Historical Society**370th Bulletin**September 2010*

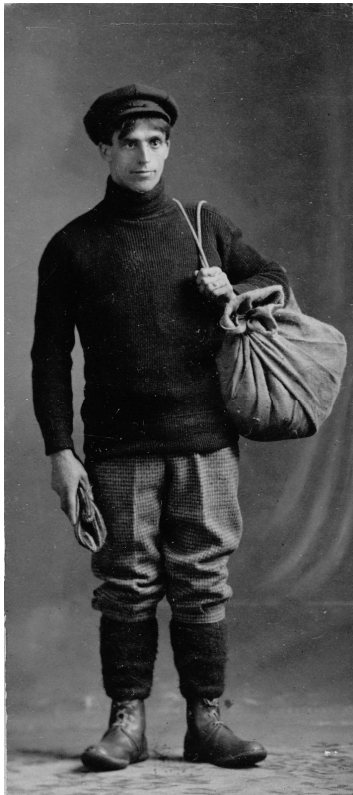
ISSN 1494-5983



PHS Meeting,
Tuesday September 21, 2010
at 7:30 pm
Peterborough Public Library
Lower Level Auditorium
Aylmer Street, Peterborough
Lumberjack in the Courthouse
by Joe Wearing

Our speaker, Joseph Wearing Jr., son of Judge Wearing, was born in London, Ontario and is a graduate of the universities of Western Ontario, Toronto and Oxford. In 1967 he was appointed a professor in the Department of Politics at the new Trent University. Now a Professor Emeritus, he taught at Trent for thirty years.

Mary Lavery



The Peterborough Historical Society is pleased to present Joseph Wearing Jr., recounting the remarkable career of his father, Judge Joseph Wearing.

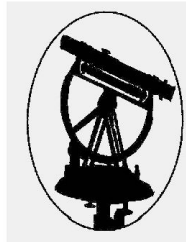
Judge Joseph Wearing (1879-1947) was born into a working class family in Liverpool with only minimal English primary education. He put himself through high school and University in Canada by working summers as a lumberjack and later as an instructor for Frontier College. After graduating from McMaster University he was called to the bar in 1913. He

practiced law in Peterborough, established a family and was very active in community affairs

Joseph Wearing – “Lumberjack”
 Credit – W. J. Boyd, Parry Sound,

until 1930 when he was appointed to the bench in London Ontario. The Mackenzie King Papers provide interesting material on the politics surrounding his ap-

Peterborough Historical Society Book Sale



Saturday September 18th
9am to 1pm

In conjunction with
Hutchison House Plant Sale

Call - 740 - 2600
for pick-up of your books

President's message.....

I can't believe this gorgeous summer is coming to an end. Your Board of Directors has continued to work hard for you. The most successful and enjoyable Bus/Cruise trip to Rice Lake in June raised over \$2,500.00 to support our activities.

Two more fund raising activities are planned for this fall - a PHS Book Sale in conjunction with the Hutchison House plant sale on September 18 from 9 am to 1 pm.

Save Friday November 19 for a turkey dinner at Princess Gardens in conjunction with an entertaining dialogue, portrayed by Dennis Carter-Edwards and Don Willcock portraying the "ups and downs" of the Building of the Liftlock. More details to follow!

Mary Lavery

Time to Renew Your PHS Membership

Response to the PHS membership drive has been terrific so far. Since the letters were mailed a couple of weeks ago, nearly one-third have already renewed their memberships and a total of close to \$3,000 has been donated above the membership fee toward PHS and museum operations.

To help meet rising costs, PHS has increased its annual membership fees: from \$30.00 to \$40.00 for individuals; and from \$35.00 to \$45.00 for families. We have also introduced a Life Membership option for a one-time fee of \$500.00,

Membership fees are an important part of our overall budget. Close to 50 per cent goes to cover the cost of producing and mailing the monthly Bulletin and your complimentary copy of the Occasional Paper. The rest helps to support the operations of Hutchison House Museum, the monthly meetings at the Public Library, our annual community Heritage Awards and school History Awards and our Heritage Plaques program.

Thanks for your continued support.

Barbara McIntosh

The Great Debate: The Resurrection of R.B. Rogers and the Lift Lock Legacy ?

In February 1906 R.B. Rogers, the Superintending engineer responsible for the design and construction of the Peterborough Lift Lock sat down at his desk and penned a letter of resignation from the job he dearly loved and held for over 20 years. Leaks at both the Kirkfield and Peterborough lift lock prompted allegations of incompetence and mismanagement of the projects by Rogers. The government appointed a commissioner William Holgate to investigate the allegations. The Holgate Report was highly critical of Rogers and led directly to his resignation. But were these charges justified? The battle for the honour and reputation of R.B. Rogers will be fought again by the two principal characters involved, William Holgate and R.B. Rogers, (aka Dennis Carter-Edwards and Don Willcock). **The Great Lift Lock Debate** is sponsored by the Peterborough Historical Society as an entertaining and informative evening of history, political skulduggery and lively exchanges between two skilled debaters.

Please mark your calendar for November 19 and watch for further details in our Bulletin.

Dennis Carter-Edwards



June
Bus
and
Boat
tour

Trillium Antiquarian Books

William Van Nest

1285 Albertus Avenue

Peterborough ON Canada K9J 6A4

705-749-0461

trilliumbooks.ca

trilliumbooks@sympatico.ca

Member, IOBA

For Accessibility Renovations

Thanks to generous donations from members, PHS has reached its fundraising goal toward the cost of recent renovations to improve accessibility to Hutchison House Museum.

Last March, the Ontario Trillium Foundation awarded a grant of \$134,400 on the condition that the remaining costs would be raised from other sources. Work began in April and the entire project was completed on time and within the estimated budget.

Thank you to everyone who contributed to the success of this important project, whether by a cash donation or through donation of time and skills. It has been a remarkable success story.

New Accessible Parking Space

As part of recent renovations, a parking space has been created on the west side of the building that enables people with physical disabilities to more easily visit the museum. The parking space provides easy access to a ramp system that leads to the terrace and a new accessible door to the main floor. By 2010, it will be mandatory under provincial legislation for all facilities that are open to the public to offer this type of accessibility.

This parking space may not be used by anyone other than those with disabilities at any time that the museum is open to the public.



Curator, Gale Fewing's grand-daughter Poppy on the baby change table at Hutchison House

A Lasting Tribute To Michael Townsend

As a tribute to Michael Townsend's enormous contribution to PHS and Hutchison House Museum and his tireless leadership in promoting greater access for people with disabilities, the museum's new accessible ramp system will be dedicated to him. A bronze plaque reading The Michael Townsend Memorial Walkway

2010 has been ordered and will be installed on the walkway this fall.

Donations toward the cost of this plaque may be sent to PHS indicating that it is for Michael's plaque.



Hutchison House Report

As with all summers, it seems, this summer passed by in a flash. The Scottish Teas proved as popular as ever and the young junior volunteers kept the staff on their toes as usual. The end of the season is always bittersweet. Erin and I had the great pleasure of working with some fine students this year. Sincere thanks to Margot Kingender, Program Coordinator; Harleen Pandha, Junior Volunteer Coordinator; Sarah Carr, Programming Assistant; and Emily Walsh, Historic Interpreter. Special thanks to all of the volunteers junior and senior!

In addition to ongoing programs and events offered throughout the summer months, we also began some very special projects. In the spring when the excavators were digging at the back of the house for the accessible ramp they unearthed the remnants of an old well which had been used for broken china and discarded bottles, among other things such as a light bulb circa 1900 and a clay pipe circa 1846. We've had lots of fun researching the various objects. Loretta Terry and Emily Walsh have spent a great deal of time this summer researching the china shards we managed to rescue from the piles of dirt that were hauled out of the ground. Dr. Susan Jamieson, professor of archaeology at Trent University, has kindly loaned the museum some reference books that have proved invaluable for this purpose.

The Sir Sandford Fleming College Conservation students worked tirelessly as well. They rehoused and inventoried our archival collection of books, paper documents, photographs and slides. Over the course of the summer the students contributed hundreds of hours to the project. Many thanks to the students and their supervisors/instructors including Dorothy McCord, Cindy Colford, Deb Scott and Gayle McIntyre for overseeing what turned out to be a mammoth project. At the end of the project the students made presentations discussing their findings, the processes they used to rehouse the artifacts, and in some cases, recommendations regarding storage and additional projects that could be undertaken by museum staff. Museum staff and some of the volunteers sat in on the presentations and it was a great learning experience for all concerned.

Hutchison House staff are also conducting research for a virtual exhibit on Dr. Hutchison. Funding for the exhibit has been made possible through a grant from the Canadian Heritage Department of the Federal government.

Dr. John Hutchison arrived in North America at 20 years of age, after studying to be a surgeon in Scotland for 3 years. The early history of the Peterborough area can be told in part through the patient records of the doctor. He arrived in the area in 1818, a few years before the town of Peterborough was settled. He lived in Cobourg, Port Hope, Cavan, and Monaghan before moving into Peterborough in 1830. The exhibit will focus on the 'life and times' of Dr. Hutchison and his practice in the backwoods of Upper Canada.

Some of his patients would become quite well known in the history of Upper Canada. Susanna Moodie and husband John Dunbar Moodie, Thomas and Catharine Parr Traill, as well as Catharine and Susanna's brother Samuel Strickland were patients of the doctor. Thomas A. Stewart, his wife Frances and their family, counted on the doctor's friendship and medical services. The letters of Susanna Moodie, Catharine Parr Traill, and Frances Stewart are valuable resources to be used in this exhibit.

The exhibit will tell the story of Dr. Hutchison's life in Upper Canada through his relationships with others. While the doctor himself did not leave behind a diary, or very much in the way of correspondence, some of his patients often referred to him in their writing. The doctor's Birth Registry 1817-1846 and some of his patient ledgers (1830-1838) have survived and are among the artifacts belonging to the Hutchison House Museum collection. They offer a valuable glimpse into the doctor's practice in the Peterborough area.

In 1845 Dr. Hutchison's second cousin, Sandford Fleming, came to live with the family in Peterborough. Fleming would go on to make his mark in history. Sir Sandford Fleming kept a journal throughout his adult life. When he arrived in Peterborough at the age of 18, he wrote about his early impressions of the community and noted many of his day-to-day activities. The exhibit will include some of Fleming's experiences in the community through excerpts from that time, especially

ones that pertain to the doctor in particular.

The exhibit will include drawings and photographs of the early community that will help illustrate the way of life and development of the town. Archival material from local museum and archival collections, and interviews with local historians are to be conducted and included as well.

I am happy to report that most of the renovation work is behind us for the time being. Visitors and volunteers alike have commented favourably on the accessible entrance to the building and the interior improvements as well. We are now in the process of creating an audio/visual tour of the museum to enable those with mobility issues to view the house without having to physically go up the stairs. It has been no small feat to take on such a large project, but in the end the volunteers and staff who were involved with the planning and implementation believe it was worth it.

Gale Fewings



Junior guides Chelsea Haemel and Ryan O'Byrne



Junior volunteers Megan O'Byrne and Charlotte Dempsey serving tea



Harleen Pandha, Junior Volunteer Coordinator; Sarah Carr, Programming Assistant; Margot Kingender, Program Coordinator;



Emily Walsh, Historic Interpreter

Hutchison House Museum

**Owned & operated by the
Peterborough Historical Society
270 Brock Street
Peterborough Ontario
K9H 2P9
Phone 705- 743-9710
email: info@hutchisonhouse.ca**

**Curator: Gale Fewings
Management Committee:
Members: Edith Butler
Bill Carson
Bill Corbett
Barb Earle
Betty Hinton
Michael Peterman
Debra Taylor**

Board of Directors

**President: Mary Lavery
Past President:
First VP: Dennis Carter-Edwards**

**Directors: Gail Corbett
Bob Green
Linda Lumsden
Enid Mallory
Barbara McIntosh**

**The Trust Funds Trustees:
Chairperson: David Bate
Peter Darling
Lois Davidson
Don Earle
Marilyn MacNaughton**

Website:

www.peterboroughhistoricalsociety.ca

Mark your Calendars**PHS Fall Events**

Saturday September 18, 2010 Book Sale in conjunction with Hutchison House Plant Sale.

Tuesday, September 21, 2010 Topic: Judge Joseph Wearing, Speaker: Joe Wearing

Tuesday, October 19, 2010 Topic: Asylums in Ontario, Speaker: Janet Miron

Tuesday, November 16, 2010 Topic: Curve Lake and Whetung Family, Speaker: Mae Whetung

Friday November 19, 2010 Fundraising Turkey dinner Topic: "ups and downs" of the Peterborough Liftlock.

Hutchison House Plant Sale

Saturday September 18, 2010 Plant Sale, Scissors Sharpening, Plants 9 – 11 am. Sharpening & Books 9 am. – 1 pm. Donations of plants or books may be dropped off at Hutchison House up to and including Friday, September 17.

Peterborough Historical Society

270 Brock Street K9H 2P9

Phone 705 - 740-2600

email info@peterboroughhistoricalsociety.ca

Bookkeeper, Administrative Assistant

Diane Ostrom,

The Bulletin

Editor **Linda Lumsden**

Publisher **Marilyn MacNaughton**

Photographer **Doug Lavery**

Bulletin submissions for the October issue due by Wednesday, September 22, 2010 (day after meeting)

Eail addresses

Hutchison House info@hutchisonhouse.ca

PHS info@peterboroughhistoricalsociety.ca