

Sustainable Peterborough 2016 Report Card



*Caring communities
balancing prosperity,
well being and nature*



sustainable
Peterborough 
Our future...
Our legacy

Our Reach

Sustainable Peterborough now serves as a small “r” regional Advisory Committee that coordinates and translates

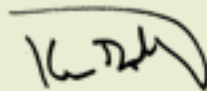
community sustainability concerns and aspirations to 10 municipalities and 2 First Nations across the Peterborough area.

Unlike many of our municipal colleagues, our activities are discretionary and are not provincially or federally mandated or regulated. We have no legal or financial obligation to undertake projects within a specified time or budget, unless it is a condition of external funding.

Some find this reality frustrating; I find it invigorating! It allows us to conduct our activities through community development and strategic planning processes. We can engage the community

broadly and creatively. Collectively, we can critically assess where we are now and — more importantly — where we would like to be at some future point.

We know that our ability to progress depends on the convergence of political will and community expectations as budgets permit. But, this still allows us to dream of an even better quality of life for our residents and visitors. In this process, our reach should always exceed our grasp!



Ken Doherty, Chair
Sustainable Peterborough
Coordinating Committee

2016 Highlights

2016 was such a successful year in our community! There were so many sustainable projects that we can only highlight some of the achievements. For a list of all the 2016 accomplishments reported by our partners please visit our website.

Note: Bolded names throughout this Report Card denote Sustainable Peterborough (SP) partner organizations. To become a SP partner please contact us.

Agriculture & Local Food

Eating local foods encourages sustainable agriculture, supports local food growers, benefits the local economy and reduces GHG emissions.

A collaboration between **TRACKS** and **Farms at Work**, The Flint Corn Community Project is a Three-Sisters style learning garden that grows food for community use and teaches the local community about Indigenous agriculture, soil health and pollination systems.

Transition Town Peterborough held the 6th annual Purple Onion Festival in September, Local Food Month.



Farms at Work surveyed populations of beneficial insects and pest insects on local farms. This work supports research on integrated pest management strategies that reduce pesticide use.

Through **YWCA's** Gleaning Program, 52 participants took 34 trips to local farms to pick over 14,000 lbs of fresh local food worth over \$21,000, at no cost.

The Mount Community Centre and **Trent University** hosted a community research project on developing rooftop, accessible and community gardens.

The New Canadians Centre ran a community garden where clients grew vegetables and learned how to start and maintain a small garden at home.



What you can do:

Plant a garden, shop at local farmers' markets, join a local Community Supported Agriculture (CSA) program.



Climate Change

Reducing our contribution to climate change while increasing our ability to adapt to climate change conditions will contribute to a sustainable and resilient community.

4RG (For Our Grandchildren)

partnered with local organizations to create the Peterborough Leap Chapter, which held 5 public forums in 2016.

The **Township of Douro-Dummer** is working on an adaptation project training staff and local agricultural operators on how to adapt and respond to climate change.

What you can do:

Reduce your energy usage, buy local food, plant trees, drive less.



Greater Peterborough Area adopts Climate Change Action Plans (CCAP)

All ten municipalities within the Greater Peterborough Area have completed Milestone 2 & 3 of the Partners for Climate Protection Program by adopting their greenhouse gas emissions (GHG) reduction targets (both community and corporate sectors) and climate change action plans. Curve Lake First Nation and Hiawatha First Nation's plans will be finalized shortly. Get involved by reducing your GHG emissions, track your actions, and let us know.

Contact the CCAP Implementation Coordinator, Kaitlyn Ittermann, at 705-743-0380 Ext. 2507 or KIttermann@ptbocounty.ca



@ClimatePtbo

Planet Protector Academy Climate Action Program

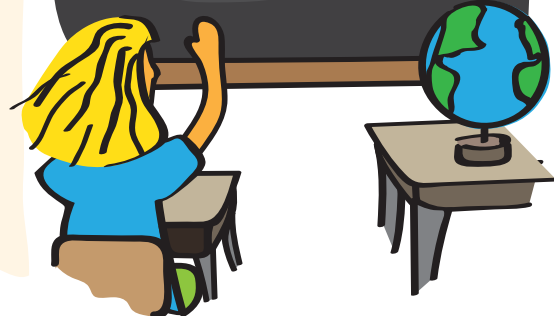
Engaged **159** elementary students and their families (**744** hours of enviro ed) to take action on climate change.



55% of families switching off lights more, **56%** taking shorter showers, **54%** driving less



Projected savings of **23,427kg** CO₂e and **\$5,470.46** over the next 3 years



Cultural Assets

Preserving and protecting our history, heritage and diverse local cultures is a necessary foundation for building sustainable communities.

Curve Lake First Nation hosted its 60th Annual Pow Wow!

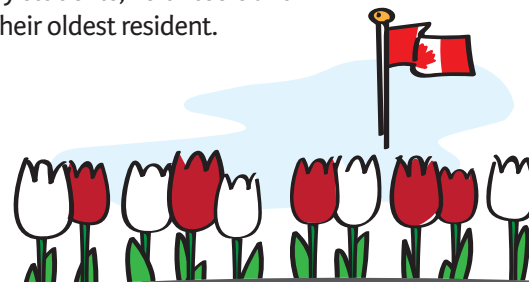
Lang Pioneer Village, in partnership with Trent Community Research Centre, created a 300 page manual that documents the history, operations and maintenance for the 170-year-old Lang Grist Mill to ensure its future sustainability.

The **Township of Otonabee-South Monaghan** Historical Society started the 150 barns project by collecting aerial photos of local farms.

Hiawatha First Nation hosted their 22nd Pow Wow and the gathering of the Mississaugi Chiefs and Councils as they reaffirmed their commitment to one another and the Mississaugi people.

Doors Open Peterborough featured a mix of sites that explored the role of heritage in building sustainable communities.

In preparation for Canada's 150th birthday, the **Township of Otonabee-South Monaghan** created the 150 Garden in Keene. 1,000 red and white tulip bulbs were planted by students, volunteers and their oldest resident.



What you can do:

Visit local libraries, galleries and museums, attend a First Nation's Pow Wow.



Sustainable Peterborough



@sustainableptbo

Economic Development & Employment

Supporting existing local businesses, attracting new businesses, maintaining and growing local employment are all critical in building a strong, sustainable, resilient community.

Hiawatha First Nation held the “Know Your Path” Career and Education Symposium.

A group of **Trent University** students won first place in the entrepreneurial challenge by building and selling bat boxes using only \$5 in seed money.

Kawartha Local is a small box store that only sells goods made in Peterborough and the surrounding region.

Locavorest is a local online farmers’ market that connects consumers and local food producers.

Work began on the Evergreen pilot project. A collaborative initiative between the **City of Peterborough, Peterborough Economic Development, Community Foundation of Greater Peterborough, Peterborough Chamber of Commerce** and Evergreen Foundation, Evergreen is focused on advancing Peterborough’s growth as a mid-sized city with the focus on green economy.

The **Township of Cavan Monaghan**, in collaboration with **Peterborough Economic Development**, hosted the “Selling Food to Ontario” workshop designed for local producers.

The **Lang Pioneer Village Museum** shop sells the work of 26 local artists, and offers many items made in-house, including blacksmithing items, knitted and crochet wear, honey and beeswax candles.



What you can do:

Shop local, use Kawartha Loons, attend Local Food Month events in September.



Energy

It is important to reduce our energy consumption and maximize the production of renewable energy to reduce our impact on climate change.

Torbram Electric Supply provides free lighting audits to encourage customers to switch to energy efficient lights and save money.

Mortlock Construction completed the construction of the Uplands Residence at Lakefield College School, a certified LEED Gold project.

Peterborough Museum and Archives upgraded the main building exterior cladding, windows and doors for energy efficiency.

The **Township of North Kawartha** converted the interior and exterior

lighting at the Glen Alda Community Centre to LED.

The **Township of Asphodel-Norwood** installed solar panels on their Community Centre rooftop.

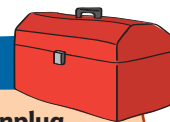
The **Municipality of Trent Lakes** completed construction of their new energy efficient fire station.

The **Township of Havelock-Belmont-Methuen** replaced the arena ice surface lighting with new LED lighting.

The **Township of Douro-Dummer** converted all Christmas decorations and community centres’ exterior lighting to LED.

What you can do:

Turn off lights and unplug electronics, use LED lightbulbs, install a programmable thermostat.



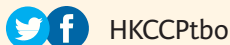
Healthy Communities

A sustainable community is one where everyone has the opportunity and support to achieve their physical, social, mental, emotional and spiritual potential.



Funded by the Ministry of Health and Long-Term Care 2015-2018, the Healthy Kids Community Challenge (HKCC) supports community-driven activities focusing on physical activity and healthy eating for children. Different “themes” run over 9-month periods. In 2016, HKCC promoted two themes, “Run. Jump. Play. Every Day.” and “Water Does Wonders”.

For more information contact the Project Manager at 705-743-1000 ext. 355



Services by a Traditional Healer are offered monthly to **Curve Lake First Nation** community members.

Seeds of Change developed a Sensory Garden in partnership with the Canadian Council of the Blind.

Peterborough-Kawartha-Haliburton has been designated as a Regional Centre of Expertise on Education for Sustainable Development by the United Nations University.

The **Township of Asphodel-Norwood** installed accessible picnic tables at all township parks.

ReFrame Film Festival screened “Fractured Land”, a documentary that addresses environmental, aboriginal and community issues.



HKCC purchased and installed **20** new water stations across the GPA



Fleming College received a silver STARS designation from the international Association for the Advancement of Sustainability in Higher Education. They also recognized **Fleming** as the only Canadian College to become a Centre for Sustainability across the Curriculum.

The **Township of Cavan Monaghan's** Fire Department and Parks and Facilities Department delivered a drowning prevention program to grade 3 students.

What you can do:

Teach children environmental literacy and stewardship skills, use green cleaning supplies, pick up litter.



Land Use Planning

Planning policies and decisions must preserve the environment while also supporting the building of sustainable, healthy and diverse communities.

The **City of Peterborough** finalized a Complete Streets road reconstruction project on Ashburnham Road, including an improved multi-use trail, a sidewalk, and bike lanes.

Part of the Depave Paradise project, **GreenUP** removed 50 m2 of asphalt

at the corner of Park St. and Brock St. in Peterborough and installed a rain garden with over 50 native plants and shrubs.

The **Municipality of Trent Lakes** partnered with the **Township of Selwyn** to develop a Community Improvement Plan for Buckhorn.

What you can do:

Get involved in community improvement planning, provide feedback into municipal official plans.



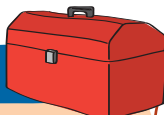
Natural Assets

Preserving, enhancing and restoring natural assets is essential in maintaining ecological health.

Camp Kawartha, in collaboration with Cathy Hooper, established a permaculture garden at their Environment Centre and offered workshops on how to create a backyard permaculture garden.

Otonabee Conservation planted over 8,000 native trees and shrubs throughout the watershed to increase biodiversity, provide shade, protect water quality and enhance habitat.

What you can do:



Boost the biodiversity of your yard by planting native trees and plants, plant a pollinator-friendly garden, become a beekeeper.

Holy Cross Secondary

School hosts a beehive as part of **GreenUP's** Community Bee Keeping Programme.

Otonabee Conservation and the Peterborough Horticultural Society planted pollinator gardens at 3 schools.

Three Sisters is a social enterprise that creates natural landscapes, including pollinator-friendly, herb and butterfly gardens for homeowners.

The **Avant-Garden Shop** sells neonicotinoid and GMO-free bird food.

Kawartha Land Trust created a new 10 km trail network on the North Shore of Stony Lake.



Transportation

A sustainable community has an accessible transportation network that places priority on active and efficient modes of transportation, and availability of EV chargers, to help reduce emissions associated with driving.

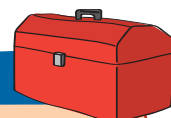
BIKE's Earn-A-Bike program provided 18 people with bicycles free of charge.

The **County of Peterborough** opened a west end Paramedics base to improve

ambulance response times and reduce travel times for the south and west of the City and County.

The **City of Peterborough** added 3.5 km of new cycling lanes and 2 km of new multi-use paths along roads.

What you can do:

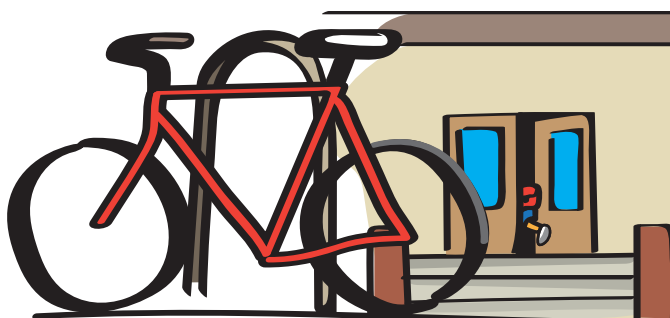


Carpool, cycle, walk, use public transit when possible.

There are

18

Electrical Vehicle
Charging Stations
in the GPA



With funding from the HKCC, **GreenUP** distributed **25** bike racks to **13** schools = **375** new bike parking spots.

Appendix A

Waste

Waste management practices need to better reflect processes found in nature; we must reduce the amount of waste we generate by repairing, reusing, repurposing and maximizing waste diversion.

The Whistlestop Café installed a Sanimax Eco Tank that collects used cooking oil for repurposing.

Belmont Lake Brewery sells their beer in reusable medicine bottles and growlers and their only waste product, the mash grain, is given to a local farmer to feed his pigs.

Cambium added a used battery recycling program at all locations.

What you can do:

Install a backyard composter, repair and repurpose, reduce consumption.

County of Peterborough Waste Management installed composters at 26 houses through their Garbage to Garden program, thereby diverting 2.6 tonnes of organic waste from landfill.

Ecology Park had a record high year of compost sales — selling over **20,000 Gallons!**



Water

In a changing climate water is a precious resource and we must work collectively as a community to protect its quantity and quality by conserving the amount of water we use and protecting watersheds.

Circle Organic installed a water catchment “earthworks” system that collects rainwater through a series of swales flowing to a Ridgepoint dam; it is a permaculture design that assists with irrigation of their vegetable crops, reducing their impact on the aquifer and supporting water conservation.

Peterborough Utilities Group purchased an accessible mobile drinking water station. It has 8 fountains and 8 bottle refill stations and can be rented to provide tap water at events.

The **Township of North Kawartha** installed a water fountain and water bottle filling station at their Community Centre.

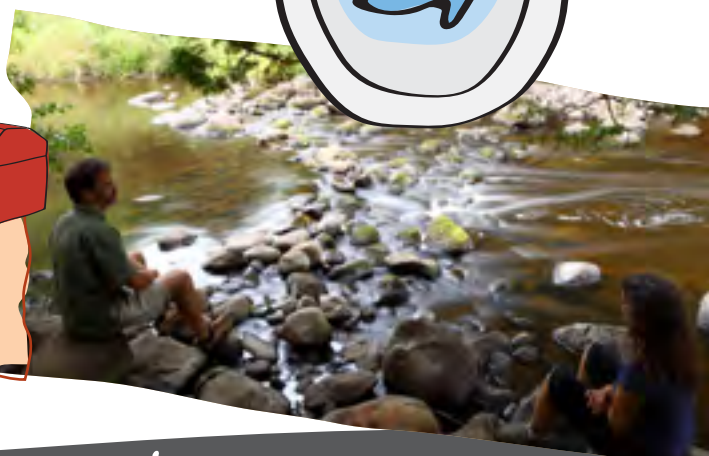
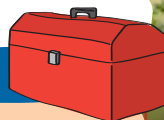
The **Township of Havelock-Belmont-Methuen** installed new water lines on King Street in the Village of Havelock, a project that will prevent water leaks.

The **Township of Selwyn** has implemented a storm sewer inspection program to increase efficiency of the Township’s lagoons and sanitary treatment system.

City of Peterborough approved **916** low flow toilet applications, saving **83,355** litres of water per year.

What you can do:

Install rain barrels, turn off the tap when brushing your teeth, install a low flow toilet, plant a rain garden.



What our partners are saying...

"The Food Forest is honoured to be a Sustainable Peterborough partner! The environmental impact of a business is exponential so it is important to have this initiative exist to encourage others to self-assess and make positive shifts. Being a SP partner inspired and pushed our own efforts further; it has brought awareness to other local initiatives and connected us with community businesses who share similar values. We are thankful to have SP in our community, their work is vital to the health of our community and our planet."

Katie Tuma and Adam Deck,
The Food Forest

"Mortlock Construction is passionate about the environment and committed to green building. We are active partners of Sustainable Peterborough, SP's Business Initiative Working Group, and the Canada Green Building Council. The environmental impacts of construction are significant and we need to do our part to mitigate the impacts of our day-to-day operation. Builders have a responsibility to the environment, and we are committed to changing the current construction paradigm."

Craig Mortlock,
Mortlock Construction

"As a partner of Sustainable Peterborough, we can participate in important multi-sector conversations and decisions that have a direct impact on the environmental, economic and human health of our communities, while creating leadership on sustainability issues."

Julie Cosgrove,
Kawartha World Issues Centre

"Sustainable Peterborough serves as a model for meaningful collaboration across jurisdictions and sectors. As a long-standing partner, our engagement with SP has helped GreenUP to foster more active working relationships with diverse local partners, and to act in concert with local municipalities and change-makers to address environmental issues. We're excited to continue as a part of this exciting collaborative."

Brianna Salmon,
GreenUP



No trees were harmed in the printing of this Report Card. Printed by **Peterborough this Week** on 100% recycled paper, using vegetable inks. Layout by **Medallist Design Inc.**

Photos throughout this Report Card courtesy of: **Camp Kawartha, Circle Organic, GreenUP, Kawartha Land Trust, Lang Pioneer Village, Municipality of Trent Lakes, Peterborough Economic Development, Township of Asphodel-Norwood**

Who we are...

