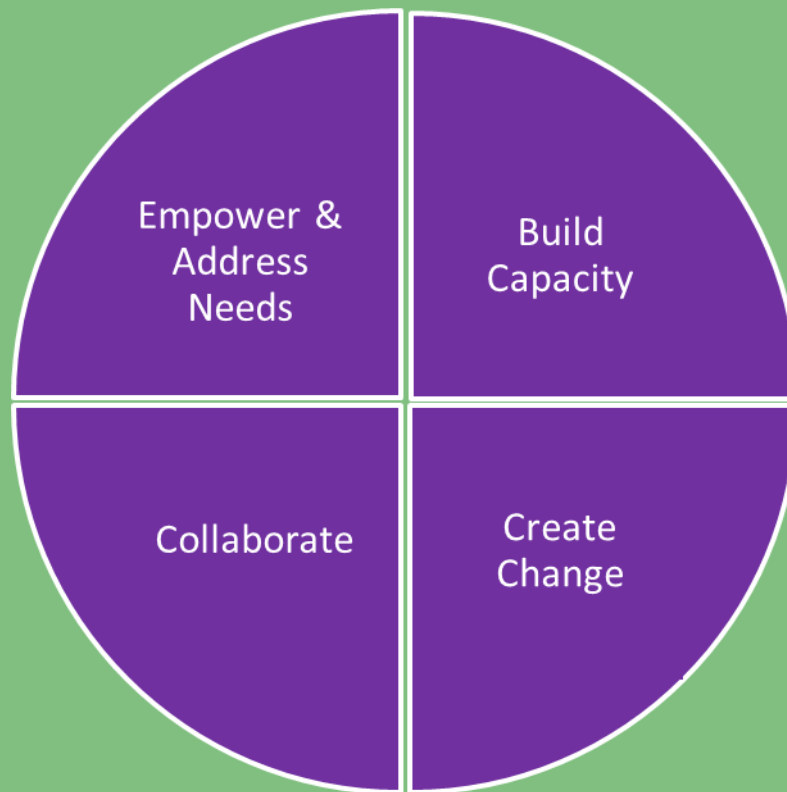




*"Too many people live in poverty in Peterborough  
and it's time for that to change!"*

# Our Plan for Poverty Reduction

**Poverty** *noun* [pov-er-tee]: *Poverty is hunger. Poverty is lack of safe and affordable shelter. Poverty is being sick and not being able to see a doctor. Poverty is not knowing how to read or count. Poverty is not having a living-wage job. Poverty is fear for the future. Poverty is living one day at a time.*



# About Us

**The Peterborough Poverty Reduction Network (PPRN)** Is a network of community groups, agencies, and individuals who are concerned about the impacts of poverty in our community. We strive to break the cycle of poverty by working collaboratively to empower people and create policy change.

## **The PPRN's Mission:**

To work collaboratively and inclusively in order to take local action and advocate for system and policy changes that address the root causes of poverty.

## **The PPRN values:**

- Equity and opportunity for all,
- Empowering people to reach their full potential,
- Building community through collaboration and a common agenda.

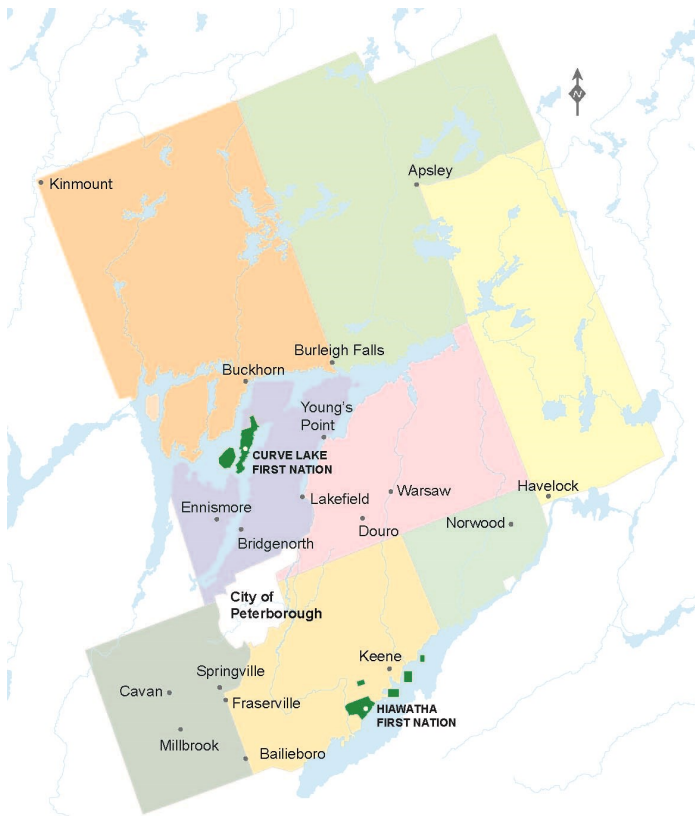


# About Poverty

**Poverty is a growing problem in Peterborough City and County.**

Over 16% of our population lives in poverty, and nearly 20% of children (CFGP Vital Signs 2014).

Map of Peterborough City and County



This situation not only hurts our community now, it has long-term economic and social costs.

The PPRN is working to reduce the impacts of poverty on our community. We want everyone to be able to reach their full potential.

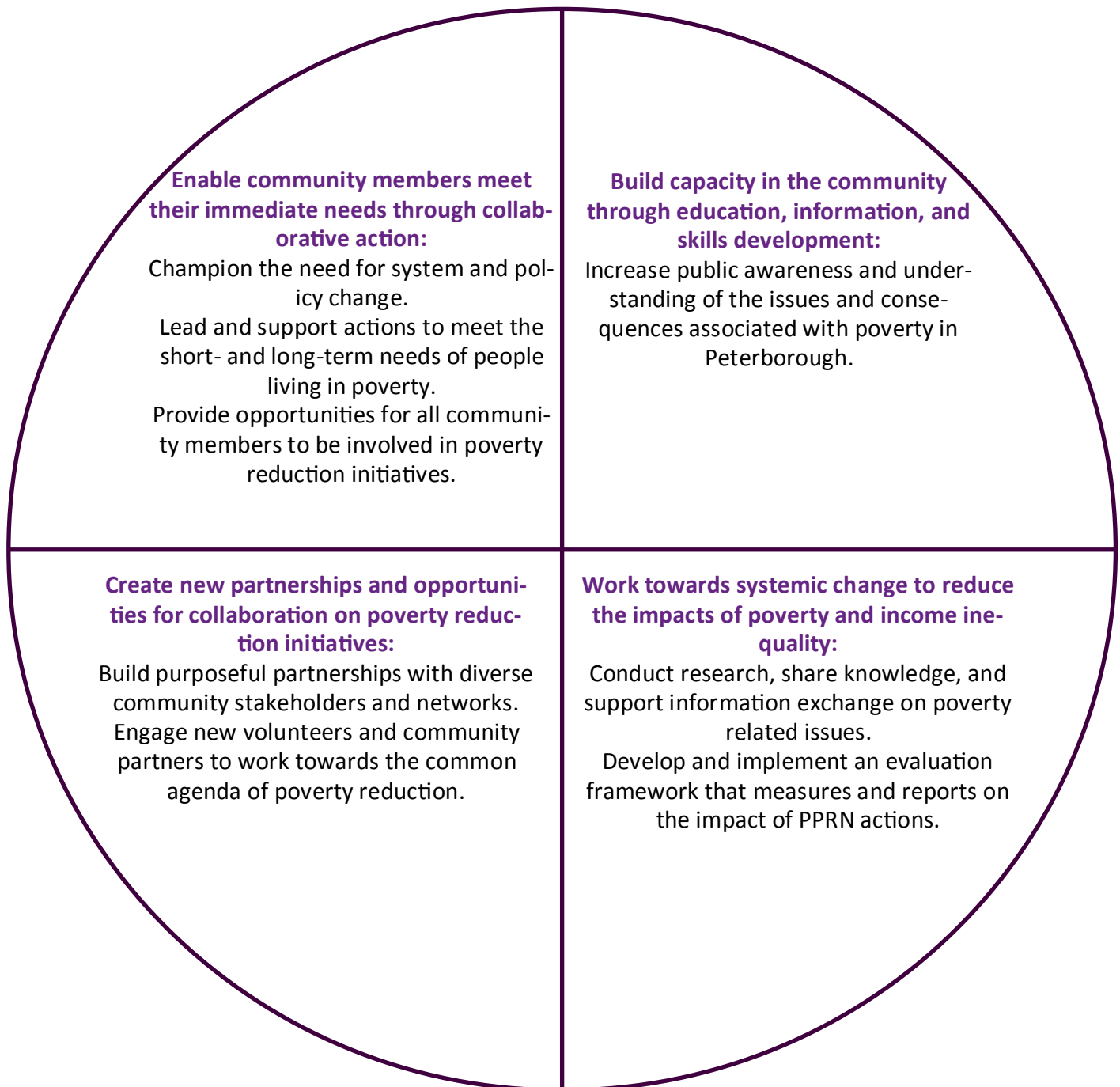
Unfortunately, the need for work on poverty reduction is growing. This is due to a variety of factors, including:

- Labour and employment trends (the rise of part-time and contract work),
- Stagnant wages and increasing cost of living (rents increased by an average of 3.9% from 2014-2015. For more, see the AHAC 2015 Housing is Fundamental report),
- The changing face of poverty (a job is no longer a ticket out of poverty. A large number of people living in poverty work, often more than 1 part-time job).

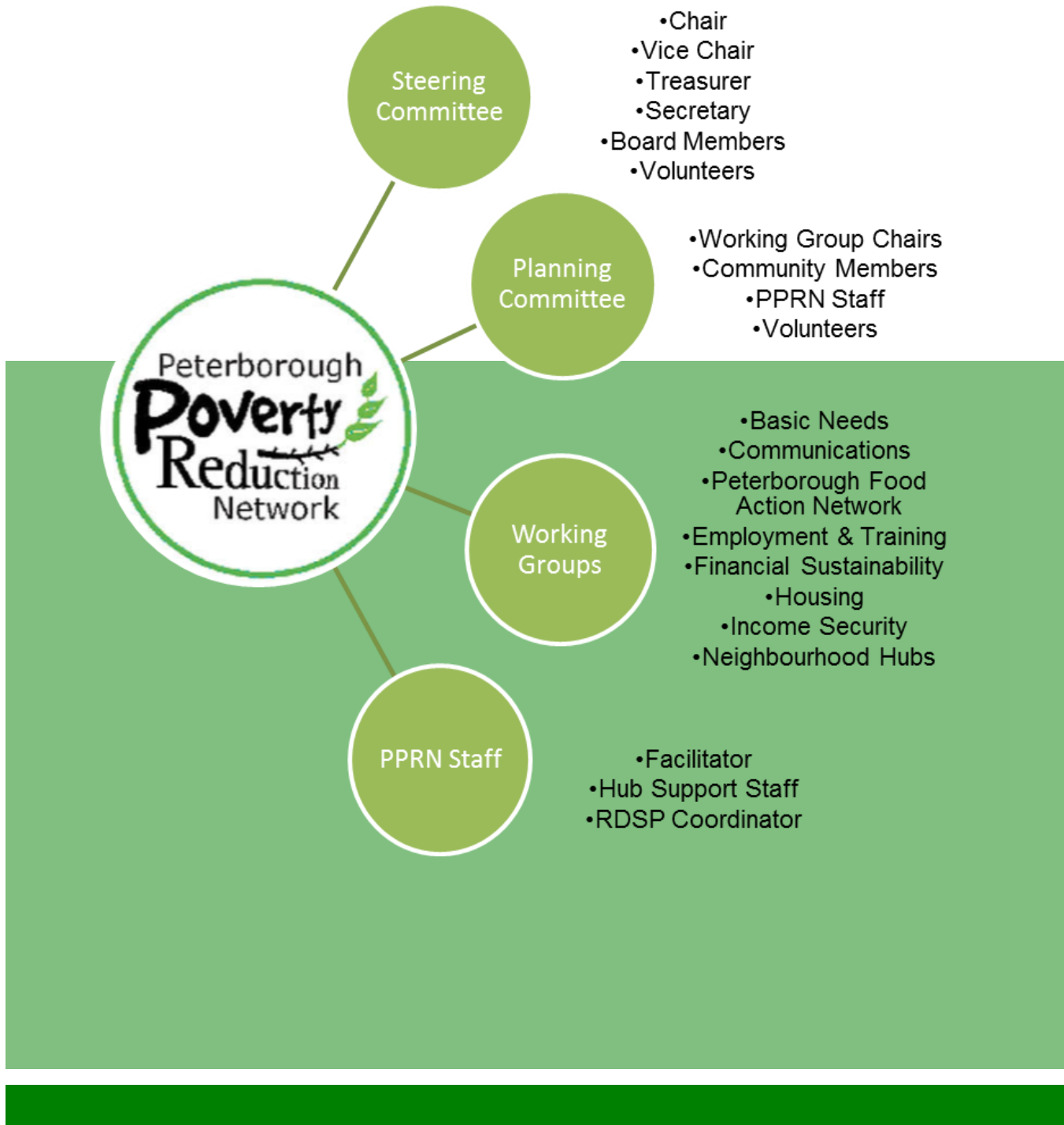
Locally, there are many organizations and agencies with plans and strategies that the PPRN will align with. These include:

- The United Way's Strategic Plan, which focuses on "from poverty to possibility";
- The City of Peterborough's 10 Year Housing and Homelessness Plan;
- The County-City Health Unit's 5 Year Strategic Plan;
- Peterborough Economic Development's recently released Strategic Plan;
- Sustainable Peterborough's Greater Peterborough Area Community Sustainability Plan,
- The Workforce Development Board's 2015-2016 Labour Market Plan.

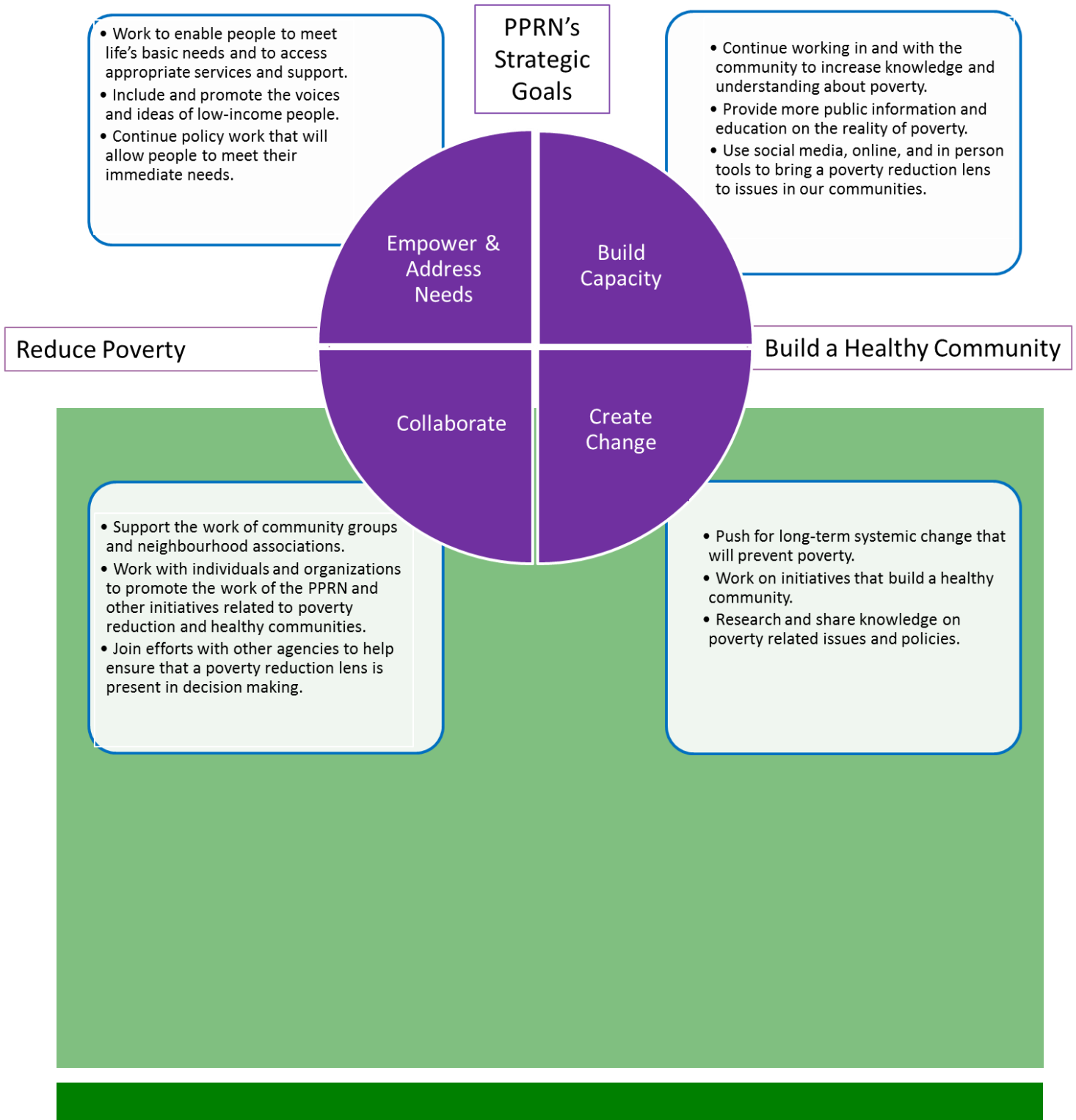
# Our Strategic Directions



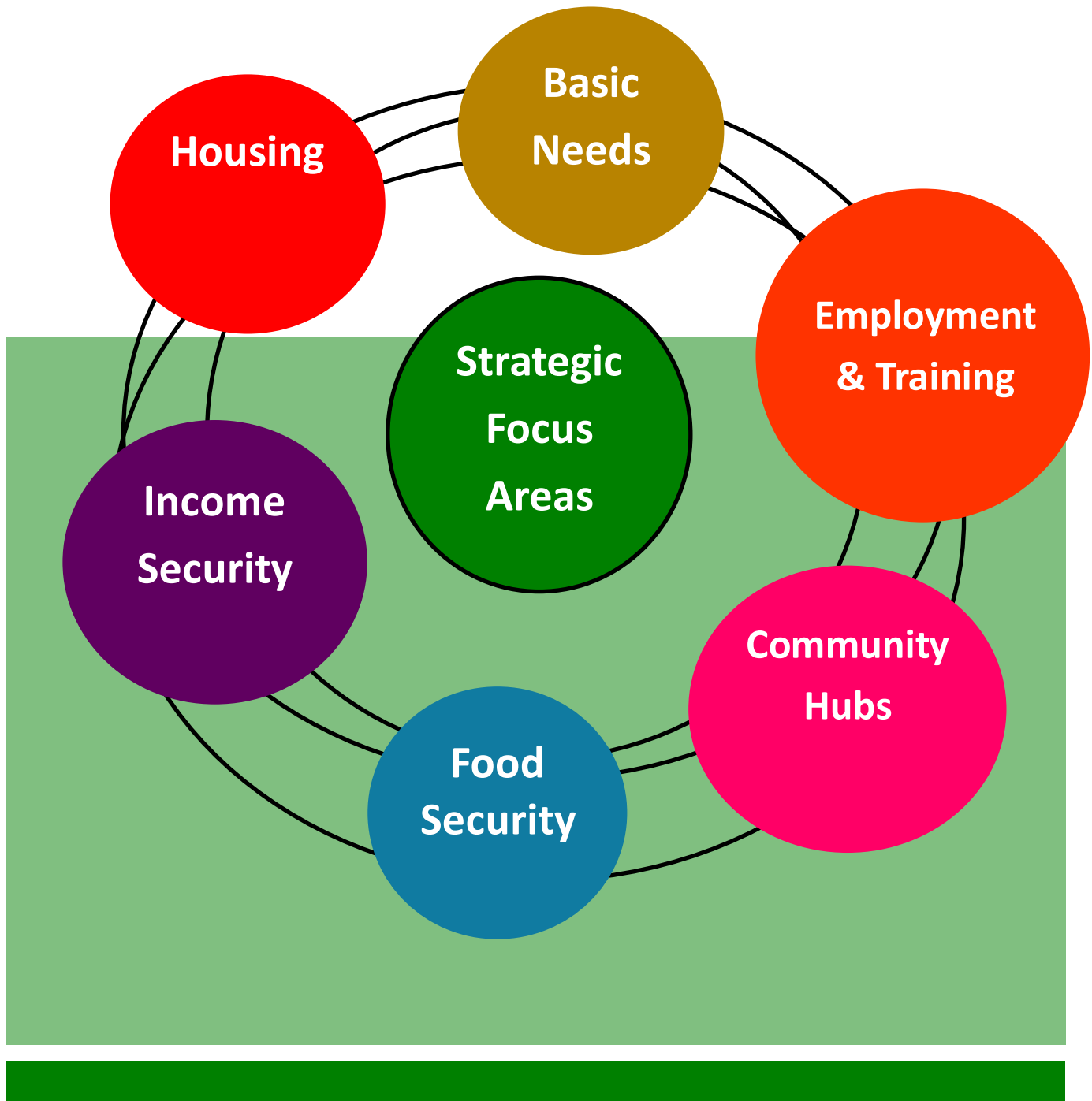
# PPRN's Structure



# Our Goals



**Making progress together:** The members of the PPRN have agreed to a shared agenda. We will reduce poverty in our community by focusing our efforts on areas where we can make an immediate difference, as well as long term, systemic change.





# Income Security

**Goal:** Everyone in Peterborough will have enough income to meet basic needs, achieve health and reach their full potential.

## How

### Empower & Address Needs:

- Advocate for increases to Ontario Works (OW) and Ontario Disability Support Program (ODSP) income support rates.
- Work towards a living minimum wage; make Peterborough a living wage community.
- Develop innovative and flexible opportunities to earn more income.
- Ensure adequate funding for housing stability and 'necessary' benefits; health, employment and children's recreation.
- Advocate for provincial pharmaceutical, vision and dental care for all people with low incomes.

### Build Capacity:

- Enable more people with lived experience to have a voice and contribute.
- Provide public education and information on income security needs and solutions.
- Improve opportunities for all people living with low incomes to save for their futures.
- Improve participation in the Registered Disability Savings Plan (RDSP) and the Canada Learning Bond (CLB).

### Collaborate:

- Contribute to local, provincial and federal initiatives to improve income security: Basic Income Guarantee (BIG), ODSP Action Coalition, Put Food in the Budget, Workers Action Centre.

## Create Change

- Work towards a Basic Income Guarantee.
- Contribute to effective social assistance reform.
- Increase community participation in the municipal budget process.

## Facts:

Over 19% of children in the Greater Peterborough live in poverty – nearly 1 in 5.

Nearly 50% of our communities population is in the Lower Half of the National income Distribution.

According to the 2011 National Household Survey, our community's median income is \$28,992.

ODSP caseloads in Peterborough have increased by 4.9% since 2012-2013.

The income for a single person on Ontario Works falls \$11,000 below the LICO; for a single person on ODSP it falls \$8,000 below.

## Partners:

Community Volunteers

Peterborough County-City Health Unit

Peterborough Community Legal Centre

Housing Resource Centre

Peterborough Health Coalition

Peterborough Social Planning Council

Peterborough Social Services

Peterborough LETS





# Peterborough Food Action Network (PFAN)

**Goal:** Ensure everyone in Peterborough has enough healthy food to eat.

The Peterborough Food Action Network uses a food security continuum to focus work in three areas:

- Need Food (short-term relief)
- Get Involved (build capacity)
- Create Change (system/policy change).

## How

### Empower & Address Needs:

- Increase the number of community gardens available in the City and County.
- Support community opportunities for food literacy development including growing, preparing, and preserving food.

### Build Capacity:

- Promote awareness of food security issues and local food producers.
- Increase access to food skill and food security related opportunities for community members.
- City and County Food Program map updated & available online.
- Educate and engage the community to address food and poverty issues.

### Collaborate:

- Ensure the fresh food is available at emergency food programs including food banks and community meals.
- Build linkages with stakeholders and partners to support community initiatives that address food security.

### Create Change:

- Address the root causes of hunger in our communities including advocacy for income and housing security.
- Support local food production that is affordable and accessible to all.
- Establish a network of places for food throughout the city and county through the Nourish Project.
- Support development of food policies (i.e. community garden policy).

## Facts:

A community enjoys food security when:

-All people at all times, have physical and economic access to nutritious, safe, personally and culturally appropriate foods, food is produced in ways that are environmentally sound, socially just and promote community self reliance, and food is provided in a manner that promotes human dignity.

Food insecurity is a local issue with 11.5% of people in Peterborough households reporting being food insecure. For 5% , the situation is severe.

## Members:

PFAN members participate at monthly meetings and through email updates/sharing. Members include community members and reps from health, social services, agriculture, education including:

YWCA Peterborough Haliburton

Nourish Peterborough

Peterborough Gleans

Peterborough Community Garden Network

Kawartha Food Share

Peterborough County-City Health Unit

Faith groups

Peterborough Social Services



# Basic Needs

**Goal:** Increase access to: accessible and affordable transportation, oral health care, and meeting the needs of the most hard-to-serve members of our community.

## How

### Empower & Address Needs:

- Secure more funding for the Dental Treatment Access Fund.
- Advocate for affordable transit passes and a ride-share network.

### Build Capacity:

- Provide more access to long term support services.
- Increased awareness about the free or low-cost health and dental services in Peterborough.

### Collaborate:

- Work to increase more funding for health and dental services.
- Create better transit and transportation systems between the City and County.

## Create Change:

- Build an advocacy network to identify and address issues and gaps for people who “fall through the cracks” in social supports and services.
- Ensure there is a comprehensive and sustainable model for providing accessible and affordable transportation.

## Facts:

43% of people in Peterborough City and County said that cost was a barrier to receiving dental treatment.

Peterborough's Dental Treatment Assistance Fund (DTAF) helps low-income people get the oral care they need.

The DTAF was created in 2007 to meet the emergency needs of adults and seniors in our communities.

## Partners:

Peterborough Social Planning Council

Victorian Order of Nurses (VON)

Peterborough Social Services

The MS Society

United Way of Peterborough and District

Peterborough County-City Health Unit

Peterborough and District Labour Council



# Employment & Training

**Goal:** Help un- and under-employed people build their skills and find work.

## How

### Empower & Address Needs:

- Provide accessible training opportunities for people of all ages and skill sets.
- Educate workers and business owners about rights and responsibilities under the Labour Standards Act.

### Build Capacity:

- Provide more access to free and non-intimidating skills development opportunities.
- Inform small business owners about the benefits of paying workers a living wage.

### Collaborate:

- Work across sectors and agencies to ensure that programs are meeting the needs of people in poverty.
- Create an Employment Bank, where people with specific skills can be linked up with employers.

## Create Change:

- Work to support the Living Wage campaign and Basic Income Guarantee.
- Educate people about the Economic Areas identified as sectors of future growth and opportunity.

## Facts:

25% of those in the labour force in Peterborough City and County are working part-time.

The occupations employing the most people in Peterborough are in the Service class (retail, food services, hospitality).

Service industry jobs are more likely to be part-time and low-wage.

Self-employed workers (entrepreneurs) account for the fastest growing source of jobs and income in Ontario.

### Partners:

Community Employment Resource Partnership (CERP)

Employment Planning and Counselling  
City of Peterborough

Worker's Action Centre

Peterborough Social Planning Council

Workforce Development Board



# Housing

**Goal:** Ensure everyone in Peterborough has a safe and affordable place to live.

## How

### Empower & Address Needs:

- Support ways to name & pressure landlords who ignore standards of safety and maintenance.
- Advocate for more affordable and Rent-Geared-to-income housing units.

### Build Capacity:

- Distribute important information to the community and those living in RGI units.
- Support AHAC in education all sectors about the 10 Year Housing and Homelessness Plan.
- Facilitate conversations to help people with high incomes understand the nature of poverty and the links to the high cost of housing.

### Collaborate:

- Engage church resources to be used for the common good.
- Ensure that agencies such as the Health Unit and Peterborough Green-Up are engaged in assisting housing developers provide safe, healthy accommodations.

## Create Change:

- Support key initiatives of the Peterborough 10-Year Housing And Homelessness Plan.

## Facts:

Over 1,500 people are on the Social Housing Wait List in Greater Peterborough.

More than 50% of renter households cannot afford the median renter shelter costs of \$850 monthly.

10,000 households in Greater Peterborough spend more than 30% of their income on rent or shelter costs.

### Partners:

City of Peterborough

County of Peterborough

The Mount Community Centre

YWCA

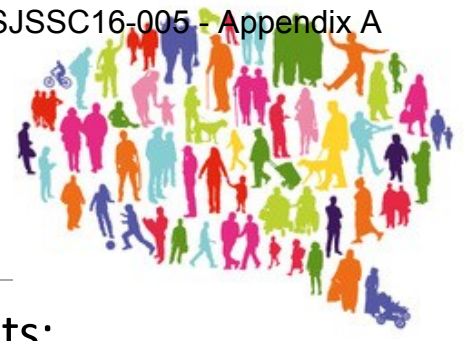
Housing Resource Centre

Local Churches and Faith Groups

Peterborough Social Planning Council

Habitat for Humanity

Peterborough County-City Health Unit



# Community Hubs

**Goal:** Support hub development, and engage residents in the neighbourhoods where they live.

## How

### Empower & Address Needs:

- Create connections with community groups, service providers, agencies, and governments to ensure that needs are being met.
- Act as a resource and catalyst for community hubs and neighbourhood groups.

### Build Capacity:

- Facilitate partnerships for group activities, programs and services at community hubs.
- Provide information about private and government grant opportunities.
- Act as a resource for new hubs.
- Engage and support residents at the neighbourhood level.
- Identify and evaluate changes as they occur at the hub and neighbourhood development level.

### Collaborate:

- Work with community members to determine the strengths and needs of the community and neighbourhood.
- Engage in robust and diverse partnerships to help support the needs of communities and neighbourhoods.
- Partner with local, provincial and federal hub and neighbourhood initiatives.

## Create Change:

- Foster inclusive, diverse hubs and neighbourhoods.

## Facts:

Across the province and around the world, community hubs have emerged as a policy solution and as an important way to meet critical needs and preserve community assets.

Community Hubs are one of those rare interventions driven by both the grassroots and by the “grasstops” ~ Community Hubs in Ontario: A Strategic Framework and Action Plan (pg.63)

### Partners:

City of Peterborough

County of Peterborough

The Mount Community Centre

Local School Boards

Housing Resource Centre

Local Churches and Faith Groups

Community Foundation of Greater Peterborough

Peterborough Family Resource Centre

YMCA

Employment Planning and Counselling

United Way of Peterborough and District

# Moving Forward:

---

PPRN's Working Groups will focus on the items outlined in this plan. However, we also have many other ideas and areas of action.

For more detailed information, you can refer to the Work Plans, which are attached as Appendix A-D on our website ([www.ptbopovertyreduction.com](http://www.ptbopovertyreduction.com)).

The Work Plans provide more detail about the objectives, activities, and indicators used by the Working Groups.

To contact Working Group chairs, please email us and we will put you in touch.

## Continued Evaluation:

As we implement our Plan, we will work to make sure that our activities and ideas are making an impact and helping people move out of poverty.

A key component of this will be ongoing evaluation. PPRN will be working with a variety of community partners, individuals, and organizations to conduct thorough evaluation of the components mentioned in this plan.

## Role for the community:

The PPRN will continue to engage the community so that we can work toward achieving our goals together. PPRN welcomes public participation in many forms—including social media and newsletters, our Working Groups, and through the development of Community Hubs across the City and County.

**Together, we will reduce poverty in our community!**

## Notes



## Connect with us:

Website: [www.ptbopovertyreduction.com](http://www.ptbopovertyreduction.com)

Phone: 705-874-7322

Email: [info@pprn.ca](mailto:info@pprn.ca)

Twitter: [@ptbopovertyreduction](https://twitter.com/ptbopovertyreduction)