



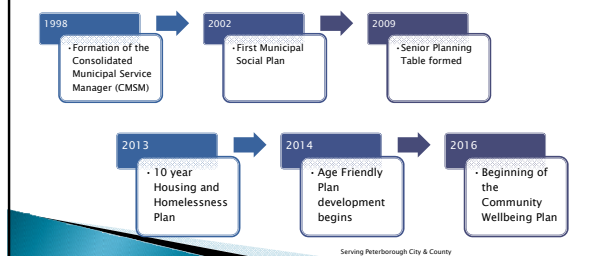
Peterborough Community Wellbeing Plan

"Community wellbeing is the combination of social, economic, environmental, cultural, and political conditions identified by individuals and their communities as essential for them to flourish and fulfill their potential."

Wiseman and Brasher

Serving Peterborough city and county

Looking back



Municipal mandates and areas of interest



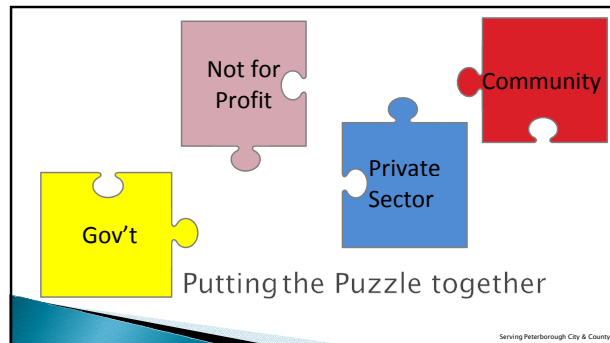
Strategic Directions



Goals

1. Set municipal priorities to improve the quality of life for Peterborough City and County residents.
2. Provide a framework for progress reports and outcome measurement of wellbeing.
3. Improve community engagement between residents and local government.

Serving Peterborough City & County



Community Vitality - happening in our neighbourhoods, how safe we feel, and whether or not we are engaged in community activities or becoming socially isolated

Democratic Engagement - citizens freely participate in political activities, express their political views, and share political knowledge; where governments build relationships, trust, and encourage citizen participation; and, where democratic values are promoted by citizens, civic organizations and all levels of government

Education - focuses on school-based learning and education rather than informal learning. Societies that thrive encourage a thirst for knowledge at every age and stage, so includes both traditional indicators of educational achievement along with some less conventional indicators of education across the life span.

Environment - explores natural assets available to Canadians, the flow of these resources over time, and some of the impacts of human activity on the environment.

<https://uwaterloo.ca/canadian-index-wellbeing/what-we-do/domains-and-indicators>

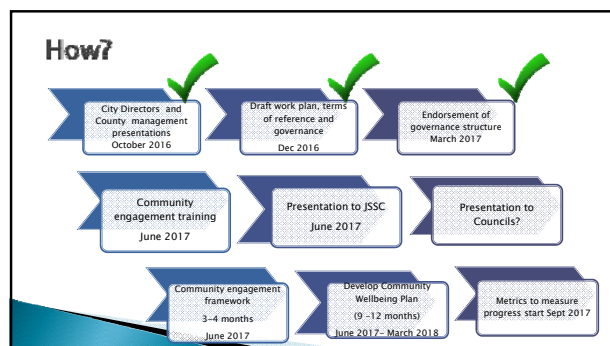
Healthy Population - assess whether different aspects of our health are improving or deteriorating.

Leisure and Culture - participation and engagement with the arts, culture, and recreation. Participation in these activities can be highly beneficial to wellbeing by contributing to better physical and mental health, and creating opportunities for socializing, relaxation, and learning new things.

Living Standards - the level and distribution of Canadians' income and wealth by monitoring poverty rates, income fluctuations, labour market security and job quality. It also considers basic necessities such as food security and affordable housing.

Time Use - how Canadians spend their time, how we experience time, what factors control our time use, and how time use effects our wellbeing.

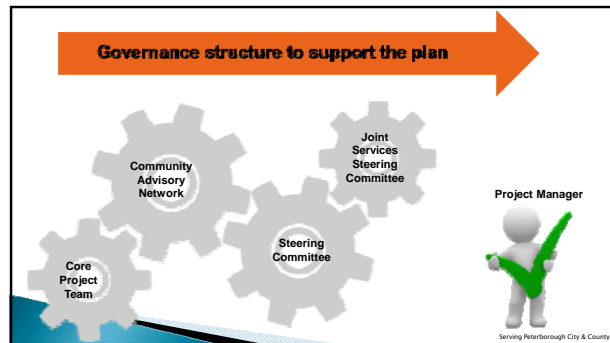
<https://uwaterloo.ca/canadian-index-wellbeing/what-we-do/domains-and-indicators>



Engagement Training

- 25 City and County staff from 16 different Divisions attended the first 1.5 days of training
- Next training scheduled for late June and includes addition staff from the City, County, Police, Health Unit and community agencies.

Serving Peterborough City & County



Steering Committee

Duties:

- Oversee and approve scope, resources, timelines, and deliverables of the project
- Approve any variance to budget
- Provide resources required to complete project
- Make decisions regarding issues raised on the project
- Accountable to JSSC

Members:

- Chair of the Community Advisory Network
- Ken Doherty
- Jeffery Humble
- Brian Weir
- Sandra Clancy
- Linda Mitchelson
- Project manager

Serving Peterborough City & County

Project Team

Duties:

- Facilitates the project and makes day-to-day/operational level decisions about the project
- Develop project documents
- Assign tasks
- Identify and develop solutions for issues encountered during project
- Complete project tasks as assigned
- Lead/coordinate project work groups – thinking about consulting in focus areas but concerned we will miss the gaps

Serving Peterborough City & County

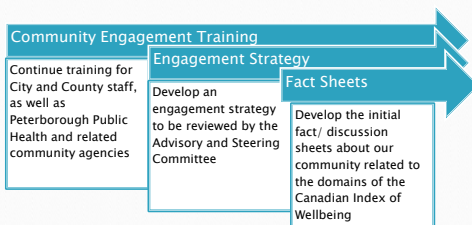
Community Advisory Network

Duties:

- An advisory network to the Community Wellbeing Steering Committee.
- Represent the interest related to the wellbeing of the community
- 2 year term with review at end of this period
- Commit in-kind (e.g. time)

Serving Peterborough City & County

Next steps



Questions

Serving Peterborough City & County