

Allan Seabrooke
Chief Administrative Officer
March 27, 2017

2016 YEAR IN REVIEW

Your Budget Dollars at Work



City of
Peterborough

Day to Day Business

- Provided instructional recreation programs to 1,937 participants; recreational subsidy for 1,248 recreational opportunities; and 59 recreational opportunities through Canadian Tire Jumpstart
- Provided services at the Peterborough Sport and Wellness Centre to 3,000 active members and registered programs for 10,495 participants (242,982 total member scans for 2016)
- Provided Museum and Archives experiences for 34,568 visitors; interpreted 487 artifacts through 53 displays; cleaned and prepared 400 artifacts for storage; created, updated and enriched 16,227 database records; mentored 83 professionals-in-training; and supported 130 volunteers who provided 3,840 hours of volunteer service
- Hosted 61 seasonal boaters and 631 transient boaters at the Peterborough Marina (16% increase in occupancy over 2015)

Day to Day Business

- Maintained 952 lane kilometres of roads, 839 kilometres of wastewater pipe, 389 kilometres of sidewalks, 367 hectares of park, 33 kilometres of trails, 30 kilometres of bike lanes, 17,300 wastewater structures, 13,640 traffic signs, and 2,282 on/off street parking spaces
- Carried 3.9 million passenger trips on public transit
- Operated 126 traffic signals and provided crossing guards at 36 school crossings
- Treated 14,600,000 cubic metres of sanitary waste (equivalent to 5,840 Olympic swimming pools)
- Peterborough Airport facilitated 59,583 aircraft movements (10% increase from 2015), is home to 23 businesses employing 380 people (20% increase from 2015), and contributes approximately \$50 million annually to the local economy

Day to Day Business

- Hosted 116 event days at the Peterborough Memorial Centre; 107 event days at the Morrow Building; 138 event days at the Evinrude & Kinsmen Centres; 28 tournaments; 11 sports camps and schools; 12,200 public skating participants; sold 176,781 tickets through the Peterborough Memorial Centre Box Office; and facilitated 16,893 hours of ice rentals
- Approved 916 Low Flow Toilet Rebate applications in 2016, replacing 1,000 toilets and saving approximately 83,355 litres of water (the amount of water in an average sized rectangular swimming pool)
- Served 31,252 customers through the Provincial Offences office (10,016 over the phone, and 21,236 at the front counter) and processed 26,783 charges
- Served over 6,000 people per month in Ontario Works and almost 1,000 families through the child care fee subsidy program (completed 20,377 Social Services appointments in 2016)

Day to Day Business

- Peterborough Fire Services reached and educated over 5,100 homes through their door to door smoke alarm program; participated in over 550 public education events; and welcomed over 1,000 visitors to tour the fire station and learn about fire safety and prevention
- Issued 794 Residential building permits (creating 256 new residential units) and 194 Industrial/Commercial/Institutional sector building permits (total construction value of \$145,000,000, a 33% increase over 2015)
- Planted/maintained 60 flower beds, 35,000 bulbs and annuals, 110 hanging baskets and planters, and 505 trees (replacement and subdivision trees)
- Maintained over 200 outdoor sports and recreation facilities (courts, fields, wading pools, splash pads, neighbourhood rinks, playgrounds etc.)
- Through the Community Grants program, helped 88 non-profit, community-based organizations provide direct programs, services, and activities that enhance the quality of life for Peterborough residents (\$1,283,012 in Community Grants provided)

Day to Day Business

- Provided IT support to more than 70 business driven projects and over 1,000 desktops/laptops, 600 mobile devices, 100 applications, 100 databases, 160 servers, and processed more than 7 million inbound email
- Managed 28,458 property taxation accounts and processed 26,346 purchasing card transactions; 3,154 accounts payable cheques; 5,910 direct deposits; and issued 52,818 payroll payments
- Conducted 133 meetings of Council and various Committees
- Commissioned 800 documents, adopted 174 by-laws, processed 107 freedom of information requests, and issued 546 marriage licenses, 1236 burial permits, 550 business licenses
- Performed 72 marriage ceremonies
- Recognized 112 people at the Civic Awards ceremony

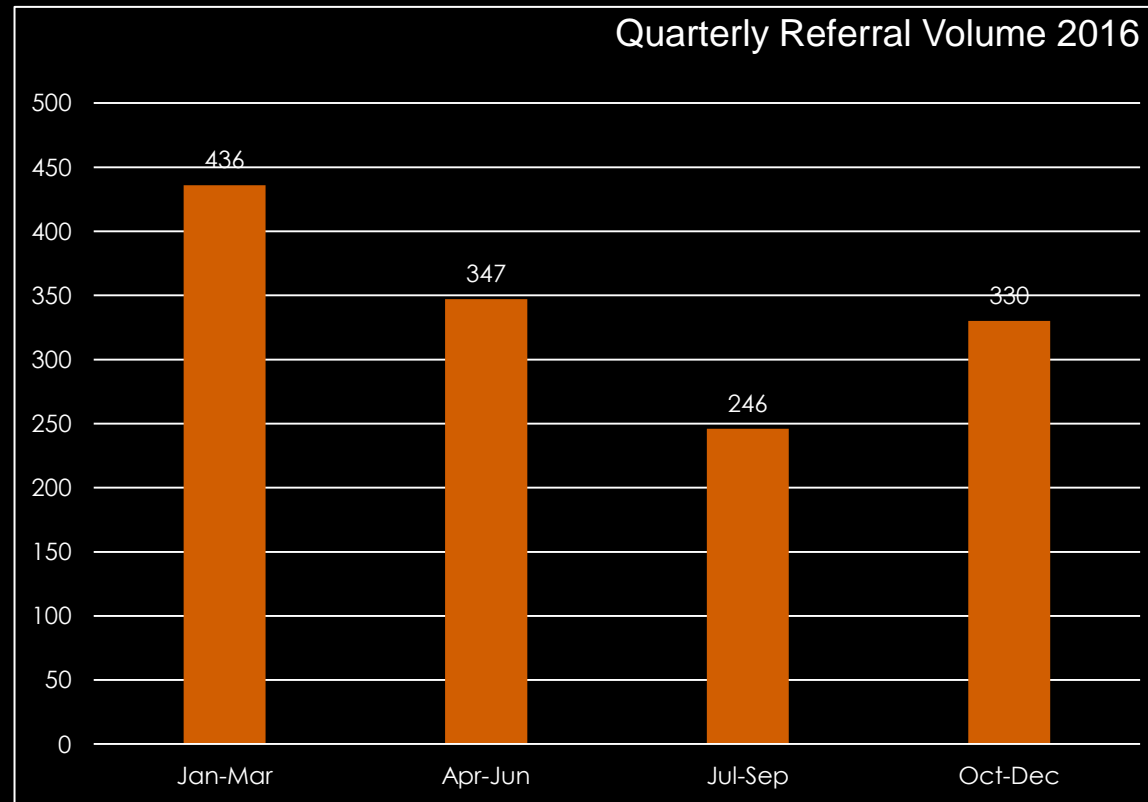
Achieving Through Partnerships



CERP Online Job Posting & Referrals System

2016 Referral Activity & Client Outcomes

- 1,359 referrals using the CERP system
- 16 agencies made and/or received referrals
- 2,290 clients served
- 1,620 clients employed



Partnership with the City and area employment organizations

Achieving Through Partnerships

WWTP BioGas Digester



- Capacity to produce 380 kilowatts of energy
- Surplus methane from waste water treatment process converted to heat & electricity
- Provides green power to approx. 360 homes
- Generates additional revenue for the City
- Reduces green house gases

Energy Generation Partnerships with Peterborough Utilities (PUI)

Kinsmen Solar Project



- Roof leased to PUI by City
- PUI paid for and owns the solar project (1,544 solar panels)
- Project able to produce 431 kilowatts of solar energy
- City will earn a portion of revenue from electricity generated

Achieving Through Partnerships

Ontario Works Self-Employment Program



- Partnership between the City and the Greater Peterborough Innovation Cluster
- Program for those receiving Social Assistance and are interested in starting their own business
- Participants work with GPIC over 60 weeks on all phases of starting their businesses
- Of the first 2 intakes, 14 of 18 participants have declared income from their businesses

2016 Program Cost Paid to GPIC - \$48,025
2016 Startup Costs Paid to Participants - 15,250

Achieving Through Partnerships

Events for Seniors

Peterborough Council On Aging Seniors' Summit



Event Sponsors/Supporters: Y-Lofts, Gardens of Peterborough, Shaw Communications, Trent Security, Peterborough Public Health, Community Care Peterborough, VON, Kawartha Regional Memory Clinic, Geriatric Health, Peterborough Housing Corp, Trent University, Fleming College, Elder Abuse Ontario, Affordable Housing Action Committee, and the City & County



Seniors Showcase 2016

- Event delivered in partnership with the Peterborough Council on Aging, Chamber of Commerce, & the City
- Organized by a committee of volunteers
- Attended by over 800 people
- Over 100 booths & displays by local businesses & organizations
- Cost covered through booth fees & sponsorships

Affordable Housing Opened in 2016

85 Households Moved into
New, Below-Market Rental
Apartments in 2016

The Mount Community Centre
www.themountpeterborough.ca

43 Units (8 Accessible)



2014 Funding Commitment
City Investment: \$2,059,040 Federal/Provincial: \$600,000

Knox Residence
Owner/Developer: Paul Millard

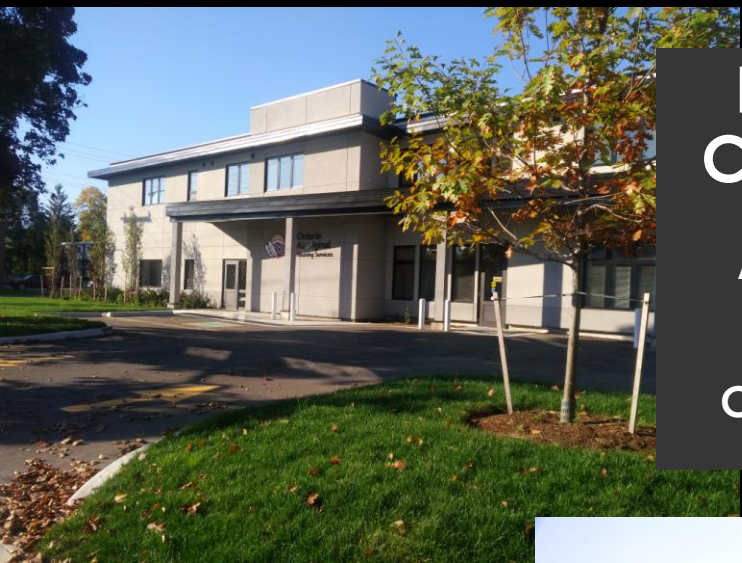
42 Units (5 Accessible)



2014 Funding Commitment
City Investment: \$1,757,573 Federal/Provincial: \$470,000

Affordable Housing Under Construction in 2016

47 Units for Low-Income Households Under Construction



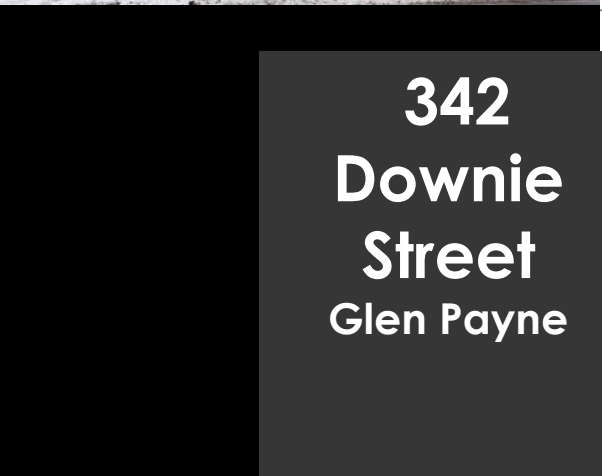
Firehall Complex
Ontario Aboriginal Housing Services Corporation



143 Rubidge Street
Canada Builds



188-189 Edinburgh Street
Moloney Project Development Group



342 Downie Street
Glen Payne



Building Community & Supporting Active Living

Park and Stride Program

(New addition to the Car Free Wednesdays School Program)

PARK AND STRIDE



- Cut traffic in school zone
- Meet up with friends
- Boost your energy
- Get more eyes on the street

ON **CAR FREE WEDNESDAYS!**

#WALKTHEBLOCK  

Program in partnership with Peterborough GreenUp, Bike, Student Transportation Services of Central Ontario, Kawartha Pine Ridge District School Board, Peterborough Police Service, Crossing Guards, and the City's Transportation Division.

Peterborough Pulse Open Streets Event Year 2



A community effort supported by 10 local private and not-for-profit organizations

Attendance doubled from Yr 1 to approx 9,400 people

Creating Great Spaces

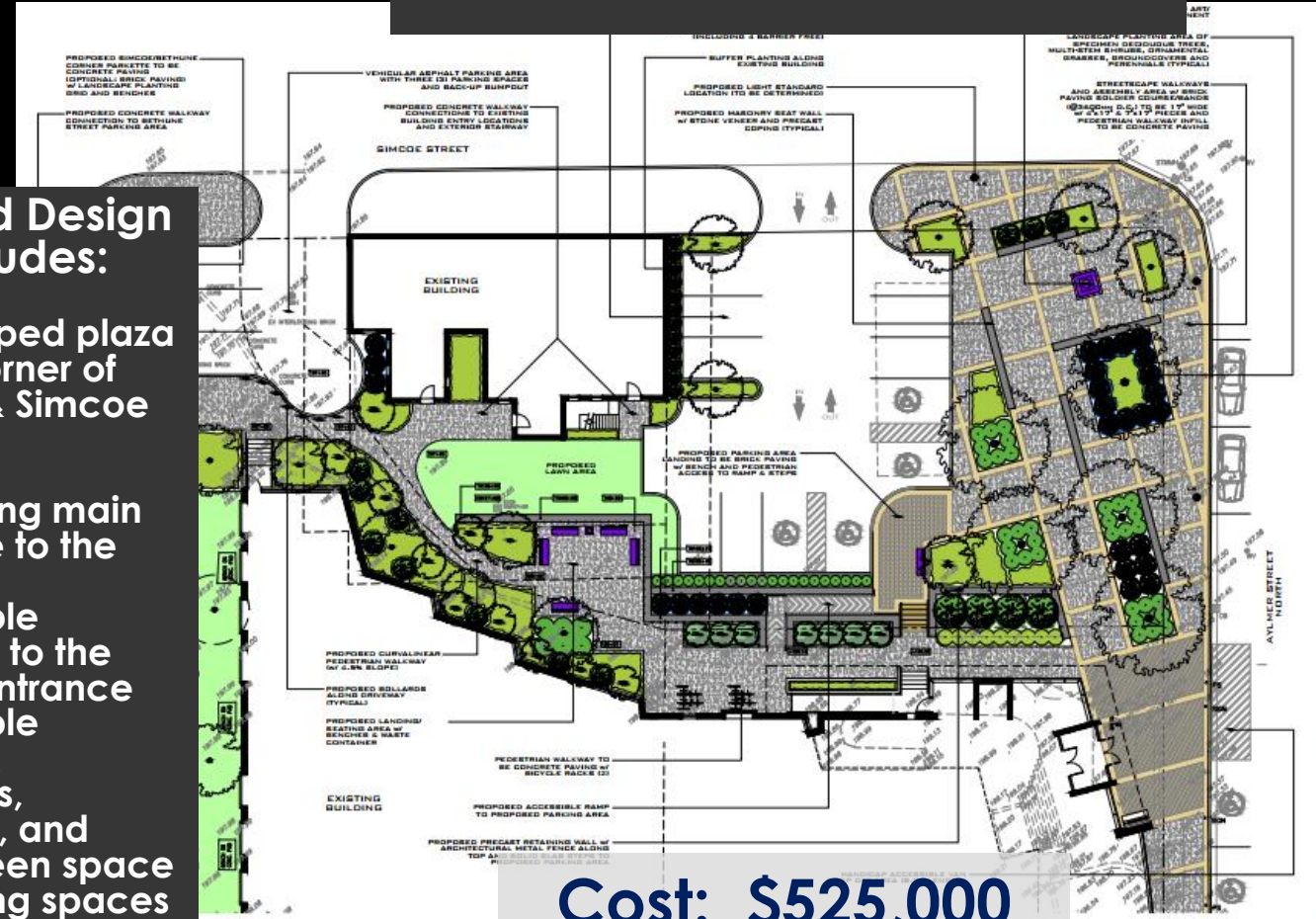
Aylmer Simcoe Plaza

Rendering of the design for the interior of the Library



Proposed Design Includes:

- Landscaped plaza at the corner of Aylmer & Simcoe Streets
- A more welcoming main entrance to the Library
- Accessible pathway to the Library entrance
- Accessible sidewalk upgrades, benches, and more green space
- 12 parking spaces



Cost: \$525,000

DANIEL J. OBRIEN & ASSOCIATES INC.
LANDSCAPE ARCHITECTS
LANDSCAPE DESIGN, CONSULTATION & PROJECT MANAGEMENT

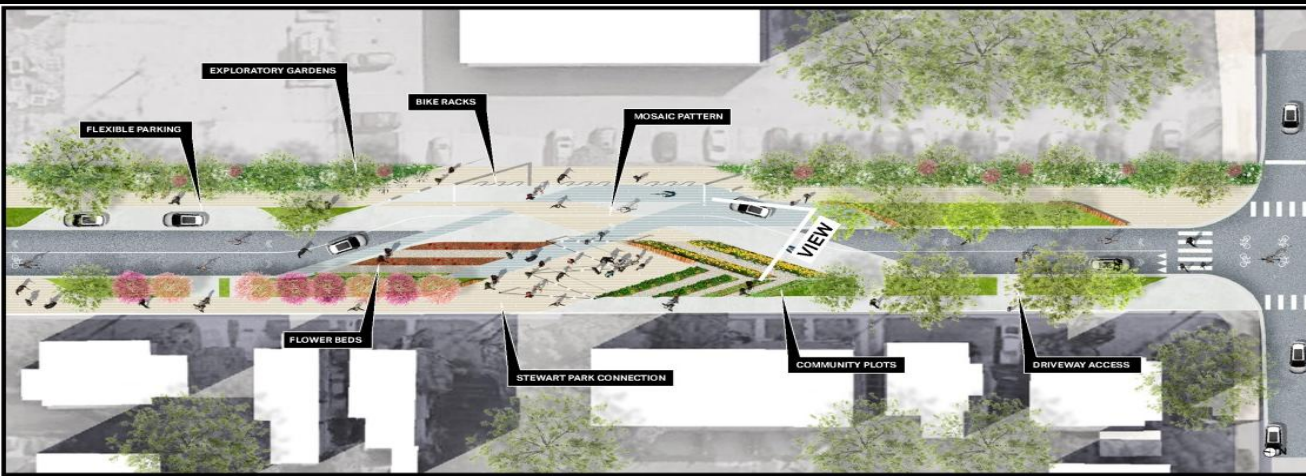
PETERBOROUGH PUBLIC LIBRARY
AYLMER ST. NORTH
PETERBOROUGH, ONT.

DATE: Sept. 2016
DRAWN BY: [Name]
CHECKED BY: [Name]
SCALE: 1:100
PROJECT NO.: 2015-10
SHEET NO.: 3 OF 7

Creating Great Spaces

Bethune Street Project 'Bethunescape'

Cost: \$1,364,546



Creating Great Spaces

Charlotte Street Urban Park Preliminary Design

Cost: \$90,000



CHARLOTTE STREET



THE ICE TRAIL (WINTER)



Creating Great Spaces

Public Art Projects

Downtown Mural Installation

Cost: \$19,808



Passing Clouds by Artist Alex Bierk
 First of a series of murals planned by the DBIA
 Installed at Simcoe & Queen Street

Photo provided by the Peterborough Examiner

Hunter Street Bridge Mural Project

Cost: \$30,000



Bloodroot by Artist Jill Stanton
 In the archway connecting
 James Stevenson Park & Quaker Park

Enhancing Accessible Services

Next Generation 911



Digital service that provides text capability with 9-1-1 services from people who are deaf, hard of hearing, or speech impaired



Fostering Inclusive Services

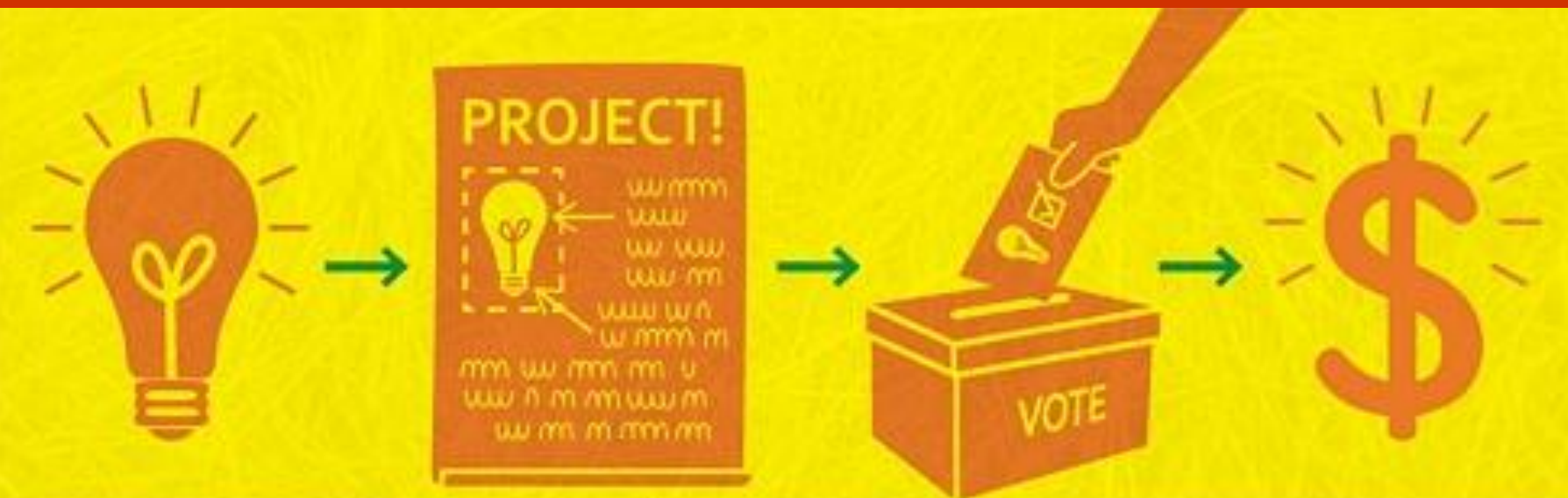


Social Services Diversity Working Group

- Providing awareness training to staff
- Distributing important diversity information
- Participating in community diversity events

Giving Tax Payers a Voice

- \$20,000 for each of City's five wards to be spent on neighbourhood improvement projects
- 901 votes received (98.7 % of votes were submitted online)
- 51 project ideas submitted
- 21 eligible projects
- 89% of PB survey respondents want PB to continue



My Peterborough

2016 Participatory Budgeting

Participatory Budgeting Pilot Program

Program Goals:

- Open Up Government
- Expand Civic Engagement
- Develop New Community Leaders
- Build Community

**Cost: \$4,782 admin budget
+ 1120 hours of staff time
(from existing complement)**

Growing Our Capacity

Corporate Sponsorship Program

Sponsorship - Enables the City to sustain and expand services & facilities without having to rely on increased tax revenues



Growing Our Economy

Airport Industrial Park (East of Airport Rd)



Total Project Cost 2015/2016: \$4.8 Million
City Investment: \$3.8 Million
Eastern Ontario Development Fund: \$1.0 Million



Growing Our Economy

Peterborough Economic Development Business Start Up Programs:

- **B.L.A.S.T. Pilot Program** – New pilot program targeted at assisting entrepreneurs over 30 with starting or expanding a business
- **Starter Company** – Provides support, guidance, & business training for entrepreneurs 18 & over
- **Summer Company** – Connect youth (ages 15 – 29) with money and support to run a summer business



Business Start-ups & Expansions

Peterborough Economic Development:

- **Assisted 122 business start-ups & expansions**
- **Connected 65 local entrepreneurs with a combined \$249,500 in funding to start & grow businesses**

Growing Our Economy

Cost: \$50,000

Trent Research & Innovation Park Draft Master Plan



Collaborative partnership between City, Peterborough Economic Development, & Trent University

Helping People with a Place to Live

Peterborough Renovates Program



Assisted 43 Households in 2016 with emergency repairs helping them to stay in their homes

72% increase from 2015 (25 Households assisted in 2015)

Total Cost: \$388,009 (Federal/Provincial)

Home Ownership Assistance Loan Program



Assisted 32 Households to move from renting to home ownership in 2016

220% increase from 2015 (10 to 32 Households)

Total Cost: \$332,400 (Federal/ Provincial)

Improving Access to Public Transit

Statutory Holiday Transit Service

Cost: \$127,000



Approx. 21,500 riders used the holiday service in 2016 (Approx. 2,200 riders each holiday)

Fleming Express

Startup Cost: \$150,000



Extended Hours of Service & Increased Service Frequency (110% increase in service hours)

Increase in monthly ridership during school yr: 30,700 to 53,000

New Buses

Cost: \$2.6 Million



5 New Fully Accessible Low Floor Buses

Improving Our Community

Community Improvement Plan (CIP) 2016 Grants



Central Area Community Improvement Plan
Municipal Incentive Grant Program

Municipal Incentive 2016 Grants totaled \$65,762



Central Area Community Improvement Plan
Residential Conversion and Intensification Grant Program

Residential Conversion & Intensification 2016 Grants totaled \$68,576



Central Area Community Improvement Plan
Facade Improvement Grant Program

Facade Improvement 2016 Grants totaled \$93,100

CIP grants programs provide financial incentives to stimulate private sector investment & revitalization of the Central Area.

Improving Our Efficiency Through Technology

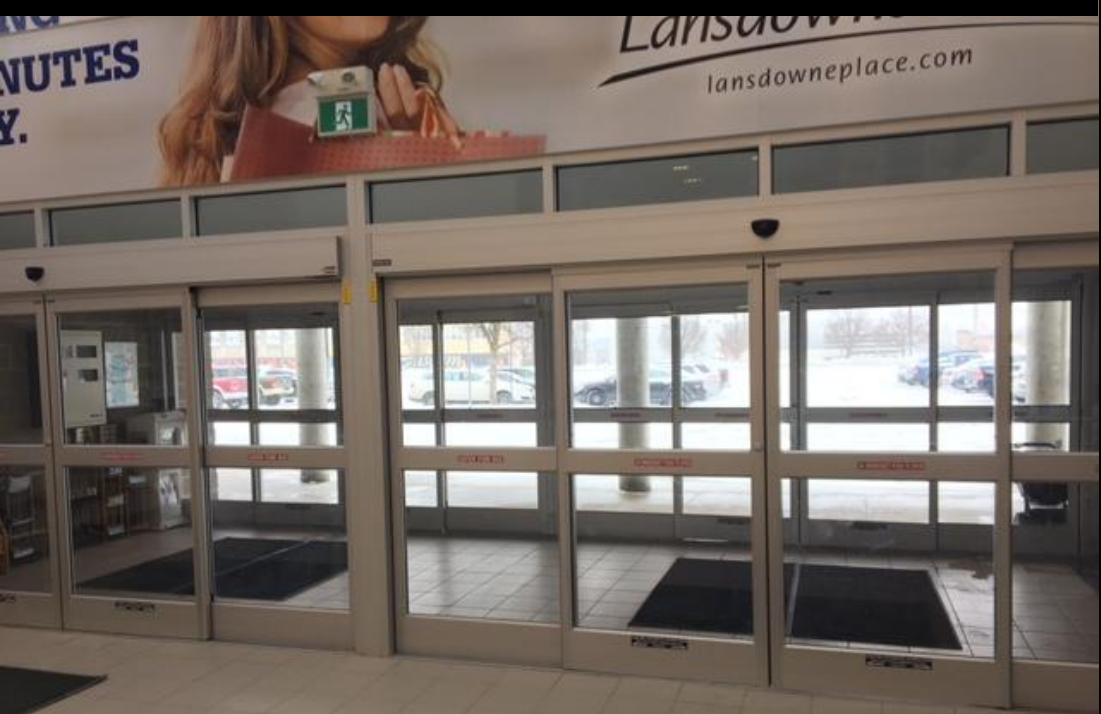
Multi-Year Roadmap to Modernize the City's Enterprise Software Investment



Efficiencies and Improved Services through Software Modernization

Improving Our Facilities

Evinrude Centre



**Front Door Replacement
Cost: \$61,855**

**Rear Exit Canopy & Enclosure
Cost: \$320,601**

King Street & Simcoe Street Parking Garages



Combined Cost: \$2.4 Million

Improving Our Facilities

Social Services Renovation Phase 2



Cost: \$1.1 Million

Transit Terminal Renovations



Cost: \$1.3 Million

Improving Our Infrastructure

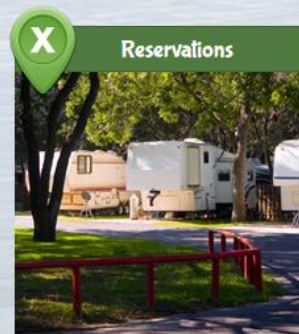
Beavermead Campground Improvements

PETERBOROUGH, ONTARIO
Beavermead
 CAMPGROUND

Park Location: 2011 Ashburnham Drive, Peterborough, Ontario.
 Beavermead Campground is open for camping from the weekend before Victoria Day in May until Thanksgiving weekend in October inclusive. Make your reservation today.
beavermead@otonabee.com or **705-742-9712** or **1-855-742-9712**

Otonabee
 CONSERVATION

HOME OUTDOOR ACTIVITIES RESERVATIONS PROMOTIONS FEES MAPS FEATURED EVENTS LOCAL ATTRACTIONS FAQ CONTACT



Improvements:

- Grading & drainage improvements
- New site driveways and fire rings
- 4 new accessible camp sites
- New primary electrical power wiring, transformers, disconnect switch & distribution panel
- Electrical & water supply to each site
- New asphalt trail across north & central campground area
- Tree replacement & additional tree plantings

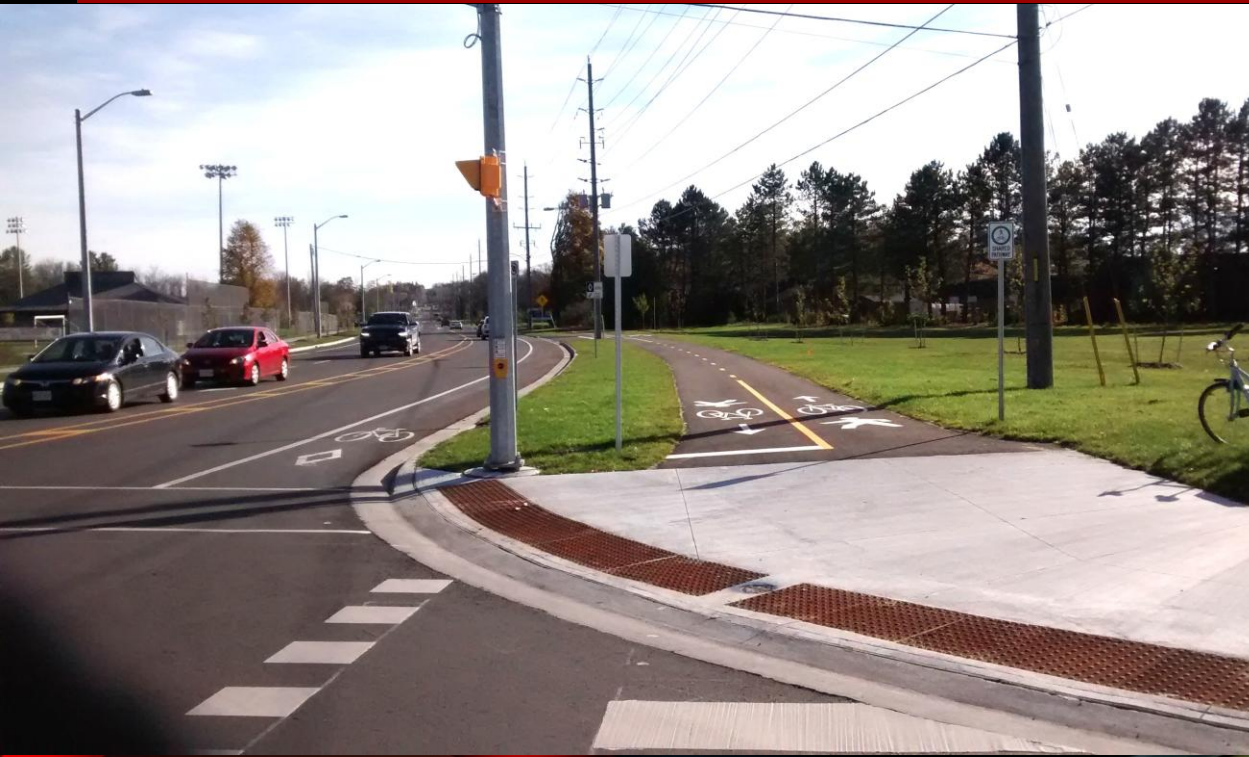
Cost: \$0.6 Million

Improving Our Infrastructure

Total Project Budget:
\$9.5 Million

Completion of Ashburnham Drive Reconstruction

Reconstruction to improve drainage, storm water quality, efficiency, and safer pedestrian crossings.



Installation of curb, gutter, storm sewers, and oil/grit separators. Installation of new traffic signals, off-road multi-use trail, on-road bicycle lanes, pedestrian sidewalks, pedestrian crossings, and new asphalt surface to improve driving conditions and reduce emissions.

Improving Our Infrastructure

Completion of Brealey Drive Reconstruction

Total Project Budget: \$6.1 Million



Reconstruction to improve drainage, storm water quality, efficiency, and safer pedestrian crossings. Installation of curb, gutter, storm sewers, and oil/grit separators. Installation of traffic signals, new off-road bicycle facility, pedestrian sidewalks, new signalized pedestrian crossings, new asphalt surface, and new multi-use trail to east side of Airport Road.

Improving Our Infrastructure

Total Project
Budget: \$9.0 Million

Completion of Parkhill Road West/ Wallis Drive Reconstruction



Reconstruction to improve drainage, storm water quality, efficiency, and safer pedestrian crossings. Installation of curb and storm sewers, large storm sewer box culvert and outlet, oil/grit separators, new traffic signals, new pedestrian sidewalks & multi-use trail for safer pedestrian & cycling uses. Improved vertical alignment and new asphalt surface to improve driving conditions and reduce emissions.

Improving Our Infrastructure

Total Project
Budget: \$3.0 Million

Completion of Riverside Drive Reconstruction



Reconstruction to improve drainage, flood protection, storm water quality, efficiency, and safer pedestrian travel. Installation of curb, gutter, 100 year storm sewer pipe and outlet with overland flow route, oil/grit separators, and new asphalt surface. Installation of pedestrian sidewalk on north side, traffic diversion, and cycling facilities.

Improving the Way We Do Things

Streamlined Parking Ticket Resolution Process



Resolution meetings now available for parking tickets instead of automatically proceeding to trial

97% reduction in # of parking tickets going to trial for Nov/Dec 2016 as compared to Nov/Dec 2015

Of the 43 parking tickets that would have gone to trial under the old process, only 13 will be going to trial

Frees up courtroom time to deal with more serious infractions more efficiently

Innovative Programming to Help Welcome Refugees

The Arts & Culture Welcome Refugees Initiative



Adult & Teen Art Workshop Series for Syrian Refugees

Workshops offered at the Art Gallery of Peterborough in partnership with the New Canadians Centre

Innovative Programming to Support Active Living



Exciting New Fitness Classes At the Peterborough Sport & Wellness Centre

Embrace your inner kangaroo!

LIVELIFEWELL

NEW
POWER JUMPS
CLASS

The Peterborough
Sport & Wellness
Centre

705.742.0050 | peterborough.ca/pswc

**Power Jumps Fitness Classes
Using Kangoo Jump Boots**

Keep calm and paddle on.

LIVELIFEWELL

NEW
SUP YOGA
CLASS

The Peterborough
Sport & Wellness
Centre

705.742.0050 | peterborough.ca/pswc

**SUP Yoga
Fitness Classes**

PSWC is also now offering off-site fitness & wellness programs:

- SUP Yoga at Rogers Cove
- Tai Chi in the Park
- School Fitness Programs
- Youth Sport Team Training
- Healthy Eating Education Programs
- Workplace Wellness Programs


Innovative Programming to Enhance Community Safety

Take the Pledge Program

Winning Poster for the Take the Pledge Program Contest



First Sound The Alarm contest winner awarded by Peterborough fire department

 By Clifford Skarstedt, Peterborough Examiner
Thursday, March 10, 2016 12:51:22 EST AM



Fire Chief Chris Shelsinger and public educator Amanda Nichols display a few of the prizes from the first fire safety package awarded to the first winner of Sound The Alarm contest Kelly Whetung on Wednesday March 9, 2016 at the Sherbrooke St. fire hall in Peterborough, Ont. Kelly completed the online Sound the Alarms Survey and told them about her smoke and carbon monoxide alarms work. With Daylight Savings time approaching this weekend, Sound the Alarms Program is the result of a successful partnership with the Geomatics Mapping Department and is a valuable educational tool to help raise awareness and increase knowledge about the importance of working smoke and carbon monoxide alarms in the community. The fire department's newest public education initiative is promoting their Sound the Alarms Program to encourage more residents to test and tell them they have working alarms on their website www.peterboroughfireservices.ca Clifford Skarstedt/Peterborough Examiner/Postmedia Network

When residents take an online pledge that their alarms are working, they get entered into a monthly prize draw

Innovative Programming to Foster Creative Play



Use of Natural Materials/ Environment in Day Care Programming

- Outdoor kitchen made from wooden pallets
- Raised vegetable garden beds
- Big magnifying glasses for exploring the outdoors
- Planks, tubes, rocks, tree cookies
- Plants & greenery for indoors

Funded through the Ministry of Education Special Purpose Funding

Innovative Programming

Repurposing of Lumber from Infected Ash Trees



Salvaged Ash lumber was:

- Auctioned to the public
- Donated to local schools for their woodshop



Cost: \$500

Innovative Public Education Program

Respect the Collect Program



Meet John.
 He collects our recyclables every week – it may be scorching hot, bitter cold, raining, snowing, or icy – he’s there for us.
Like all our dedicated collectors.

When your collector is great - tell us at respectthecollect@peterborough.ca or phone 705-742-7777 ext 1616

This message is brought to you by the City & County of Peterborough and Progressive Waste Solutions



Meet Jon.
 He collects your garbage every week. It’s a tough, dirty job, and the 6th most dangerous job in Canada.
Respect the Collect!

When your collector is great - tell us at respectthecollect@peterborough.ca or phone 705-742-7777 ext 1616

This message is brought to you by the City & County of Peterborough and Progressive Waste Solutions

- Program Results:**
- Improved set-outs by the public
 - Decrease in # of complaints received
 - Increased safety around collection vehicles

Other municipalities have requested to follow our program

Cost: \$3,500

Making it Easier to Bid on City Jobs

Biddingo.com
Paperless Bidding Technology

Savings to the City
Estimated at \$25,000

Peterborough

Business



You are here > [City Hall Bulletins](#) > [Business](#) > Competitive Bid Solicitation Process (Tenders, Quotes, Proposals)

Competitive Bid Solicitation Process (Tenders, Quotes, Proposals)

The City of Peterborough is now using Biddingo to advertise all competitive bid solicitations. To register or obtain more information about Biddingo and their services, visit them at www.biddingo.com or contact them via phone at 416-756-0955 or email info@biddingo.com.

Registered vendors will receive an email alert when any new solicitations are issued regarding City procurements that relate to the vendor's selected commodities. The Vendor is fully responsible for keeping their information up to date in the Biddingo database. All reasonable efforts to inform Biddingo registered vendors of relevant bid opportunities will be made, but neither Biddingo nor the City of Peterborough will be liable for any failure to do so.

Bid Opportunities

You can view the Open and Closed bid solicitations and related information, including addendum, Bid Record, Bid Award, through the links below:

[VIEW ALL OPEN](#)

[VIEW ALL CLOSED](#)

Terms, Conditions and General Information

[Terms, Conditions and General Information \(Attachment 1\)](#) is applicable to all bid solicitation documents issued by the Corporation of the City of Peterborough - with the exception of those issued by the City's Utility Services Department for infrastructure construction for roads, sewers, bridges. Each Bidder, Proponent or Respondent is obligated to confirm that they have read and understand this document, which is provided with each bid solicitation document.

Document and Resources

- [Terms, Conditions and General Information](#)
- [Direct Deposit Registration](#)
- [Purchasing Policy By-law 14-127](#)
- [Service Contractor Safety Program](#)

Construction Supplementary Information Package

- [A - Unit Price Supplemental Information Package](#)
- [B - Electrical Standard Specifications and Drawings](#)
- [C - City of Peterborough Quality Control Plan - Electrical](#)
- [D - Signs & Posts Standard Specifications & Drawings](#)
- [E - Pavement Markings Standard Specifications & Drawings](#)
- [F - Tree Planting Installation & Establishment](#)

Making it Easier to Find & Enjoy Our Parks, Recreation & Cultural Resources

Mapping Portals

Municipal Cultural Mapping Portal

A wealth of info about the City's cultural resources in an interactive format and in 1 convenient location

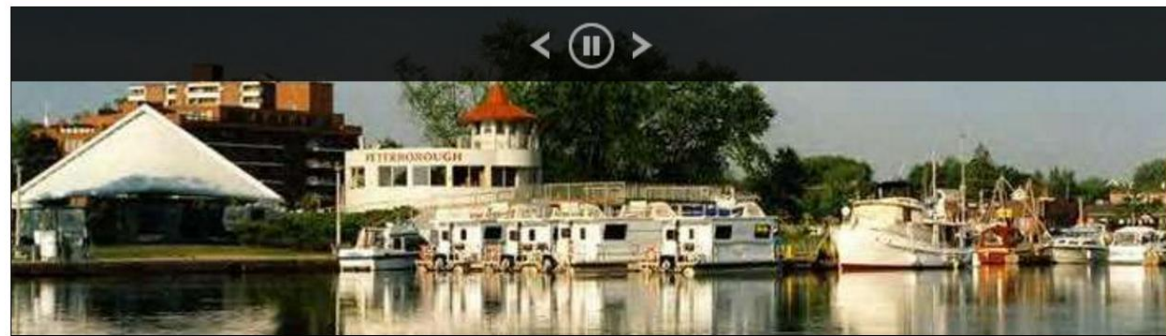
Recreation Layer Added to Community Services Map

Makes it easy to find: Arenas, Baseball Diamonds, Fields, Courts, Recreation Centres, Parks, Beaches, Splash Pads, Boat Launches, Service Clubs, Trails etc.

Municipal Cultural Mapping

Cost: \$10,999

- MCM Home
- Public Art
- Cultural Facilities and Spaces
- Cultural Organizations
- Heritage Resources
- Cultural Economy and Businesses
- Your Input



Welcome to the City of Peterborough's Cultural Maps. The Cultural Maps are a key component of the Municipal Cultural Plan - a plan that drew upon extensive community consultation in order to guide Peterborough's cultural planning and development activity. The City of Peterborough is home to a vibrant arts, culture and heritage community with levels of activity and creative energy far above those typically found in other communities of its size. It includes a wide variety of museums, an exciting music and

Municipal Cultural Planning

The strategic and integrated planning and use of cultural resources for economic and community development." (Municipal Cultural Planning

Community Services Map

Cost: \$1,500

- our services
- Home
 - Food Calendar
 - About Us
 - After Hours Service
 - What's NEW
 - Reports and Research
 - Brochures
 - Customer Service
 - Contact Us
 - Staff Access

- access online
- > After Hours Information
 - > Ontario Works Financial Assistance Application
 - > Community Food Calendar
 - > Download Forms
 - > Return to the City of Peterborough
 - > Return to the County of Peterborough
- AAA

Making it Easier to Get Around

2016 City Road Construction Map
City of Peterborough Road Construction Projects

Legend

City Construction Projects

Project Category

- Crack Seal
- Other
- Resurfacing
- Road - Reconstruction
- Sidewalk (Public Works) - Reconstruction
- Sidewalk/Trail - New Construction
- Subdivision

POWERED BY **esri** City of Peterborough

www.peterborough.ca/constructionmap

Interactive Construction Map

Shows location of road construction projects throughout the City

Provides details on work being performed, project contact, & anticipated completion dates

Identifies new subdivisions currently under development

Cost: \$3,500

Making it Even Easier to Recycle

Receive notices about waste collection days, snow delays etc.

Search the What Goes Where tool to find out how to dispose of up to 10,000 different items

Play "The Right Sort" game to test your recycling knowledge

Over 400 mobile app downloads

Cost for App + Game: \$4,500

When is collection day?
Find out your collection schedule. Search for your address to begin.

Example: 500 George St N, Peterborough

Download our new app

"City of Peterborough Waste"

GET IT ON Google Play Available on the App Store

Never forget your garbage day again!

Preparing Our Youth for the Future

- Program offered in collaboration with the Youth Job Connect Program and Credit Counseling and Resource Centre
- Topics covered include: opening a bank account, how to save, how loans and interest rates work, filing income tax, creating a budget, creating a good credit rating etc.
- Approx 15 – 25 participants at each monthly session



Money Talks Training Program



Training
Program for
Youth
Ages
18 - 25

Reducing Our Flood Risk

Maintaining Our Infrastructure



Remove over 240 tonnes of debris from pipes each year – the equivalent of 30 dump truck loads



- Clean & CCTV inspection of 50,000 m of sanitary sewer
- Clean 2,500 catch basins per year
- Repair on average 180 sanitary sewer laterals per year
- Clean & CCTV inspection of 5,500 m of leachate collection system pipes at City landfill
- Pressure test 7 km of force main from the landfill to City gravity sewers

Shaping Our City for the Future

City of Peterborough Strategic Framework

Consolidation of the Following Master/Strategic Plans:

- Central Area Master Plan (2009)
- Community Social Plan (2003)
- Comprehensive Transportation Plan (2012)
- Emergency Response Plan (2015)
- Flood Reduction Master Plan (2005)
- Greater Peterborough Area Sustainability Plan (2012)
- Housing and Homelessness Plan (2014)
- Morrow Park Master Plan (2011)
- Municipal Cultural Plan (2012)
- Official Plan Draft (2016)
- Realizing a High Performing Economy – Igniting the Transformation (2015)
- Strategic Downtown Parking Management Study (2007)
- Urban Forest Strategic Plan (2011)
- Vision 2010 (2007)
- Vision 2025 (2016)
- Waste Management Master Plan (2012)



Shaping Our City for the Future

Creation / Updating of Strategic Plans

Peterborough Agricultural Society Strategic Plan

A financially viable & sustainable plan to guide the direction & activities of the Peterborough Agricultural Society



Urban Forestry Strategic Plan (Update)

5 Year Update and Review of the 2011 Urban Forestry Strategic Plan



Vision 2025

10 Year Strategic Plan for
Recreation, Parks, Arenas &
Culture



Shaping Our City for the Future

Creation / Updating of Strategic Plans Cont'd

Updating of Asset Management Plan

The City of Peterborough

Capital Asset Management Plan
Corporate Assets
Asset Management

2016

Utility Services Department

Value of the City's Infrastructure in the Plan is \$2.5B

Sound infrastructure planning & investment contributes to a strong economy, job creation, and quality of life.

AMP has helped secure over \$20M in provincial/federal grants

Adoption of Climate Change Action Plan

CCAP will help the City:

- Reduce the use of fossil fuels
- Adapt to our changing climate
- Reduce our greenhouse gas emissions
- Lower our energy consumption

City's Annual Reduction Target is 30% = average amount of energy used by ____ homes

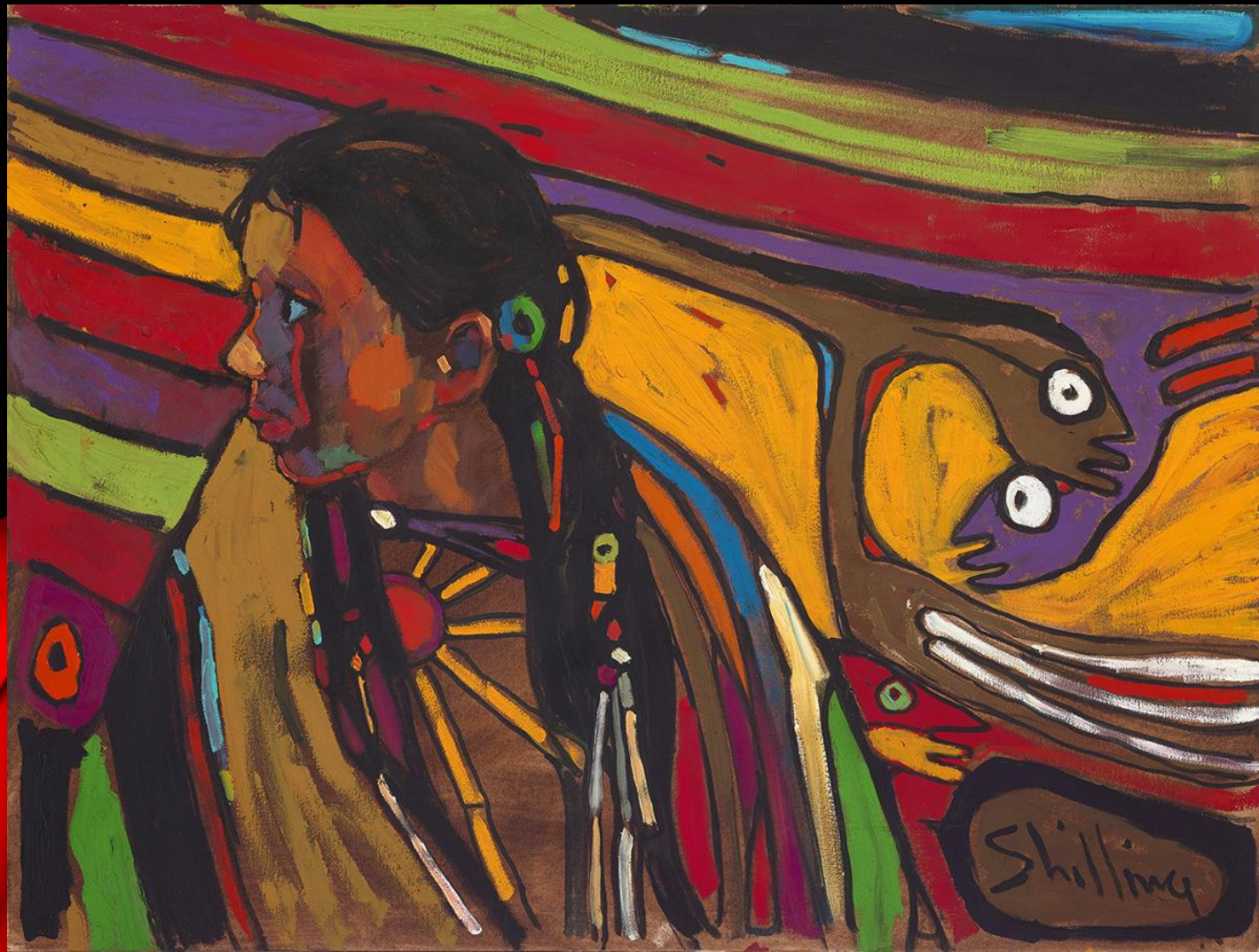
Our change

sustainable Peterborough

Greater Peterborough Area Climate Change Action Plan
Partners for Climate Protection Milestones 2 & 3 Report
City and Community Sector GHG Emission Reduction Targets & Local Action Plans
December 2016

Sharing Our Stories Through Impactful Exhibits

Arthur Shilling: The Final Works



A collection of paintings and drawings by Arthur Shilling (1941 – 1986), a renowned Anishinaabe artist from Rama, Ontario.

Curated by William Kingfisher, the Final Works recognizes Shilling as a critically important artist and visionary.

“A tremendous achievement for the AGP.”

The Trent Arthur

“Such exhibitions are soulful accounts of the flesh made spirit, a rare and treasured experience for which the AGP should be commended.”

Electric City Magazine

Supporting a Vibrant Community

Arts, Culture & Sporting Events at the Peterborough Memorial Centre

 **THERESA CAPUTO**



GORD BAMFORD ★ JOE NICHOLS



www.sledarama.ca

Supporting Active Living & Active Transportation

3.5 km of new cycling lanes & 2 km of new multi-use paths added in 2016



Streets with New Cycling Infrastructure:

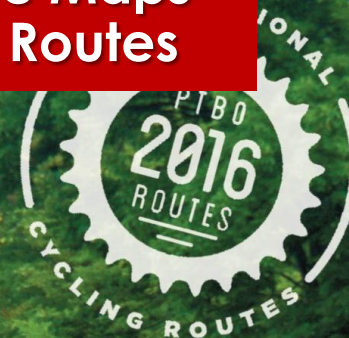
- Airport Road
- Ashburnham
- George Street
- Maria Street
- Parkhill Road
- Water Street

Active Transportation Network now includes:

- 29 km of multi-use trails
- 12 km of shared paths along roads
- 31 km of cycling lanes

Detailed Route Maps for 8 Cycling Routes

Cost: \$1,800



Peterborough Routes

RECREATIONAL CYCLING ROUTES

Supporting Healthy Aging



WHO Global Network
for Age-friendly Cities
and Communities



New
Member of
WHO's
Global
Network for
Age-Friendly
Cities and
Communities



Supporting Healthy Choices

Water Filling Stations

Installed as part of the
Healthy Kids Community Challenge
Theme 2 - Water Does Wonders

Installed at:

Evinrude Centre
Kinsmen Civic Centre
Peterborough Memorial
Centre
Peterborough Sport &
Wellness Centre
Peterborough Marina



Purchase Cost: \$16,916
HKCC Contribution:
\$8,000



Supporting Healthy Living & Building Community

New Community Gardens in City Parks

King Edward Park Community Garden



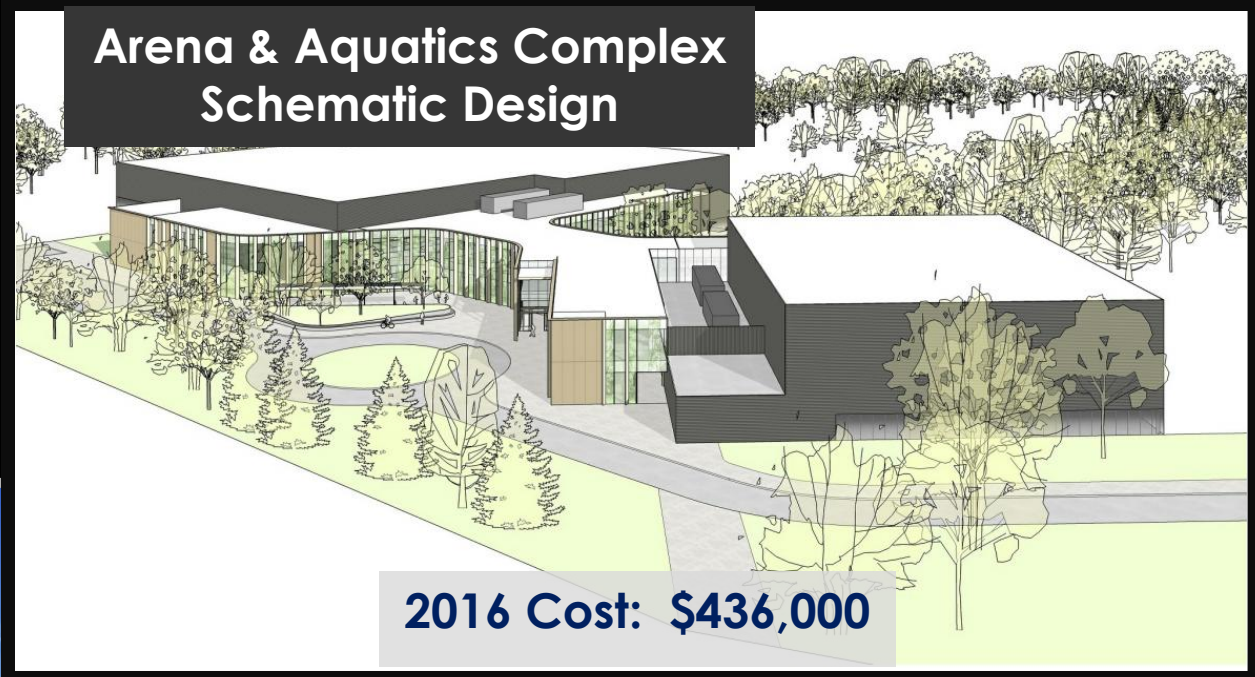
Nevin Park Community Garden



Land, top soil, and compost provided by the City
City also prepares and excavates the land to get it ready for gardening

Supporting Sport & Recreation

New Sporting & Recreation Facilities



Cost:
\$35,061

2016 Cost: \$436,000



New Beach Volleyball Courts



Photo provided by the Peterborough Examiner

City Investment: \$1,502,178
Trent University: \$250,000
Toronto Blue Jays Foundation: \$100,000
User Contributions (Ball Leagues): \$187,500

Supporting the Environment



EV Charging Stations:

- King St. Parking Garage
- Lansdowne Place
 - Peterborough Memorial Centre
- Peterborough Zoo
- Plus Lakefield & Norwood

**Ministry of Transportation
Electric Vehicle Chargers Ontario (EVCO Grant Program)
Grant: \$291,480**

Awards & Special Recognition

- **Brealey Drive – A Feature ‘Complete Street’ Project** (Featured in the Complete Street Transformations in the Greater Golden Horseshoe Region publication)
- **Diamond Rating – Marina Green Leaf Eco-Rating Program** (Awarded to the Peterborough Marina by Green Lead Environmental Communications and Boating Ontario)
- **In Top 3 Cities for Waste Diversion in Ontario** for cities of comparable size (Diversion rate increased from 56% to 57%)
- **Local Municipal Champions Award** (Awarded to the Homelessness Coordinated Response Team)
- **1 of the First 3 Small Municipalities to be Named as a Resettlement Assistance Program** enabling Peterborough to accept government assisted refugees

Awards & Special Recognition

- **Public Private Partnership Award** (Awarded to Peterborough & the Kawarthas Tourism, Shimano Canada, & Wild Rock Outfitters by the Economic Developers Council of Ontario)
- **Silver Award – Waste Reduction and Conservation Calendar** (Awarded to the City's Waste Management Division by the Municipal Waste Association)
- **Sound the Alarm Program – 'Model Program'** (Recognized by Ontario Fire Marshal's Office & Other Municipalities as a model program to follow)
- **Special Recognition Award** (Awarded to Nick Powers, IT Security Manager by the Municipal Information Systems Association MISA for his leadership and contributions)
- **Top Museum Gift Shop Sales Across Canada** (Net sales per square foot are 5x that of comparable Museum gift shops across Canada)

THANK YOU



City of
Peterborough