

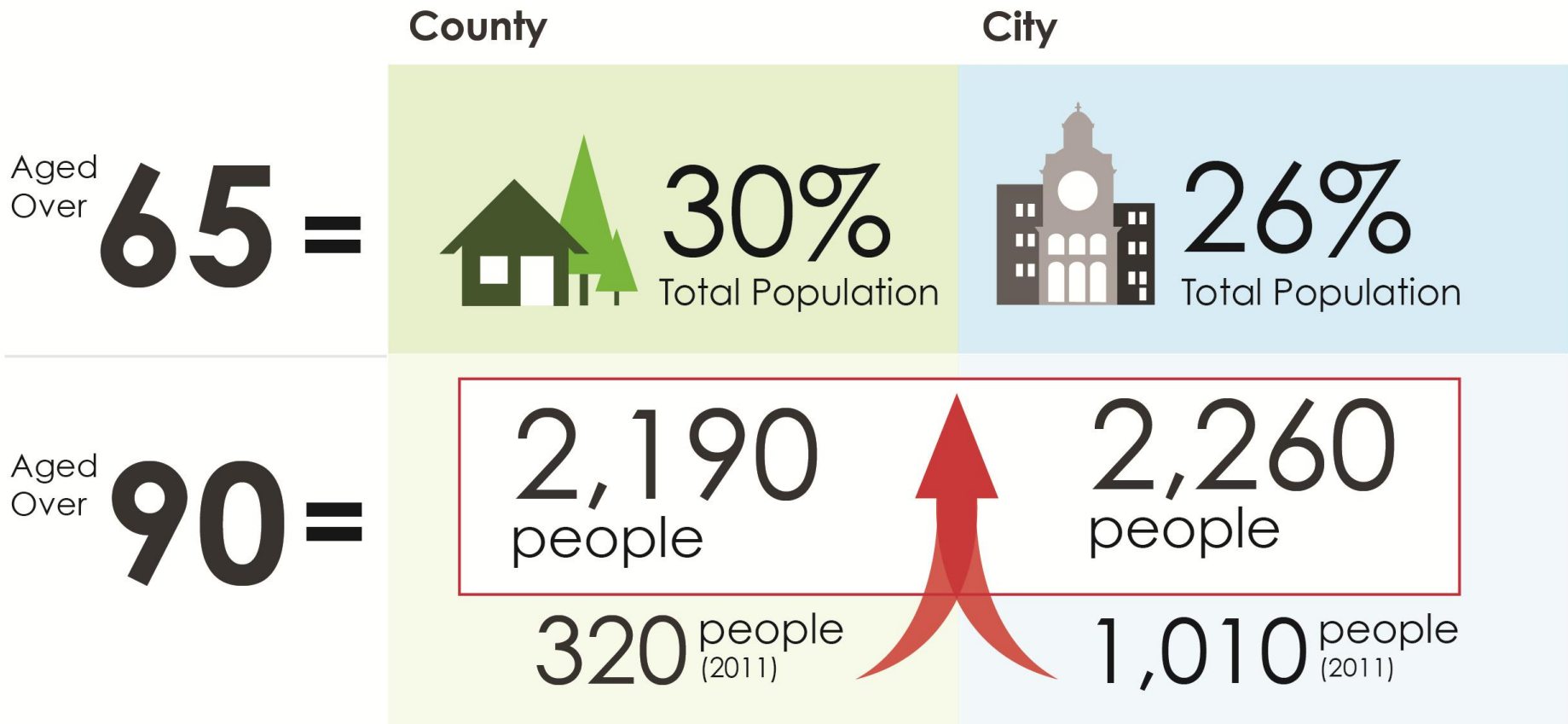
Age-friendly Peterborough 2017 Community Action Plan

Presentation to City of Peterborough Committee of the Whole

February 27, 2017

Our Aging Population

By 2041



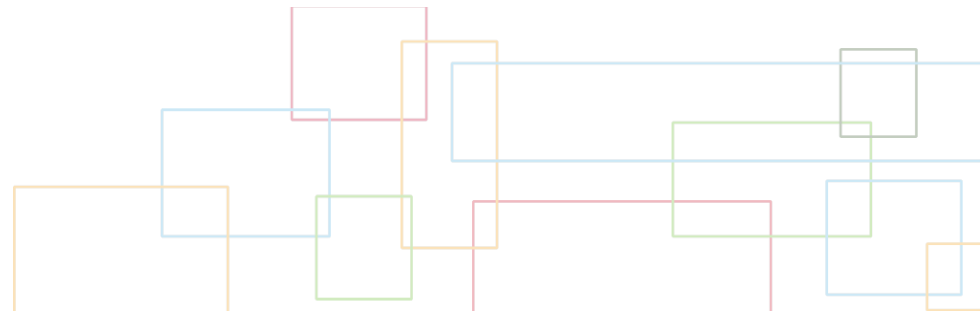
Age-friendly Communities

The WHO has been supporting the development of Age-friendly Communities around the world since 2007.

Age-friendly communities recognize older adults as an asset, and provide programs and services that enable everyone, from the very young to the very old, to enjoy a good quality of life.



**WHO Global Network
for Age-friendly Cities
and Communities**



Age-friendly Theme Areas



**Community
Support and
Health Services**



Housing



Transportation



**Outdoor Spaces
and Buildings**



**Respect and
Social Inclusion**



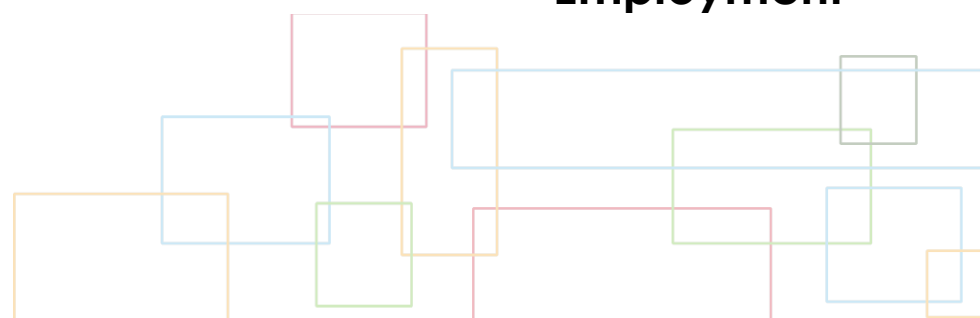
**Social
Participation**



**Communication
and Information**



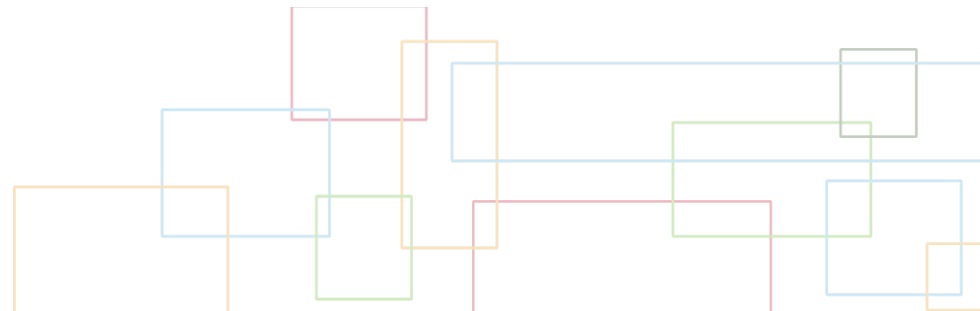
**Civic
Participation and
Employment**



Council Motion

“ That the process of applying for membership to the World Health Organization Global Network of Age-friendly Cities and Communities, and associated requirements to develop a 3-year Age-friendly Plan, be approved, including letters of endorsement from the Mayor, Warden, and City and County CAO's.”

**City of Peterborough Council Motion:
10/03/2014**



Plan Development

Winter 2014:
Council Resolution

Fall 2014:
Background
Research

Winter 2015:
Community
Consultations

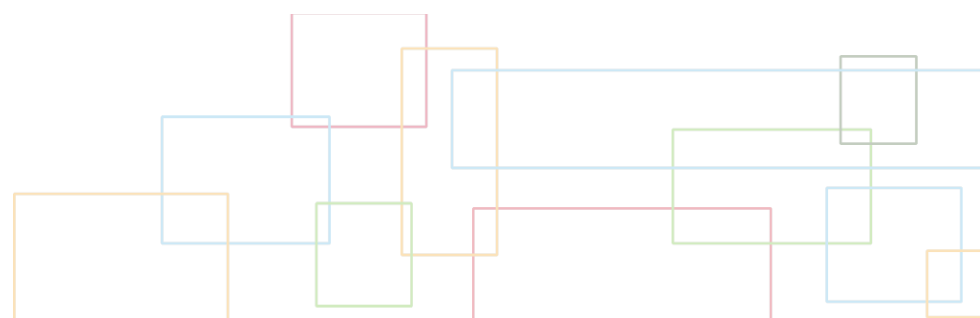
Spring 2016:
Baseline Report
Published

Summer-Fall 2016:
Draft AFP Action
Plan revised and
refined

Winter 2017:
Final Draft AFP
Plan presented
to councils

2014

2017



Consultation Process



1,127

Survey Responses



269

Focus Group
Participants



Older Adults



Informal Caregivers



Service Providers



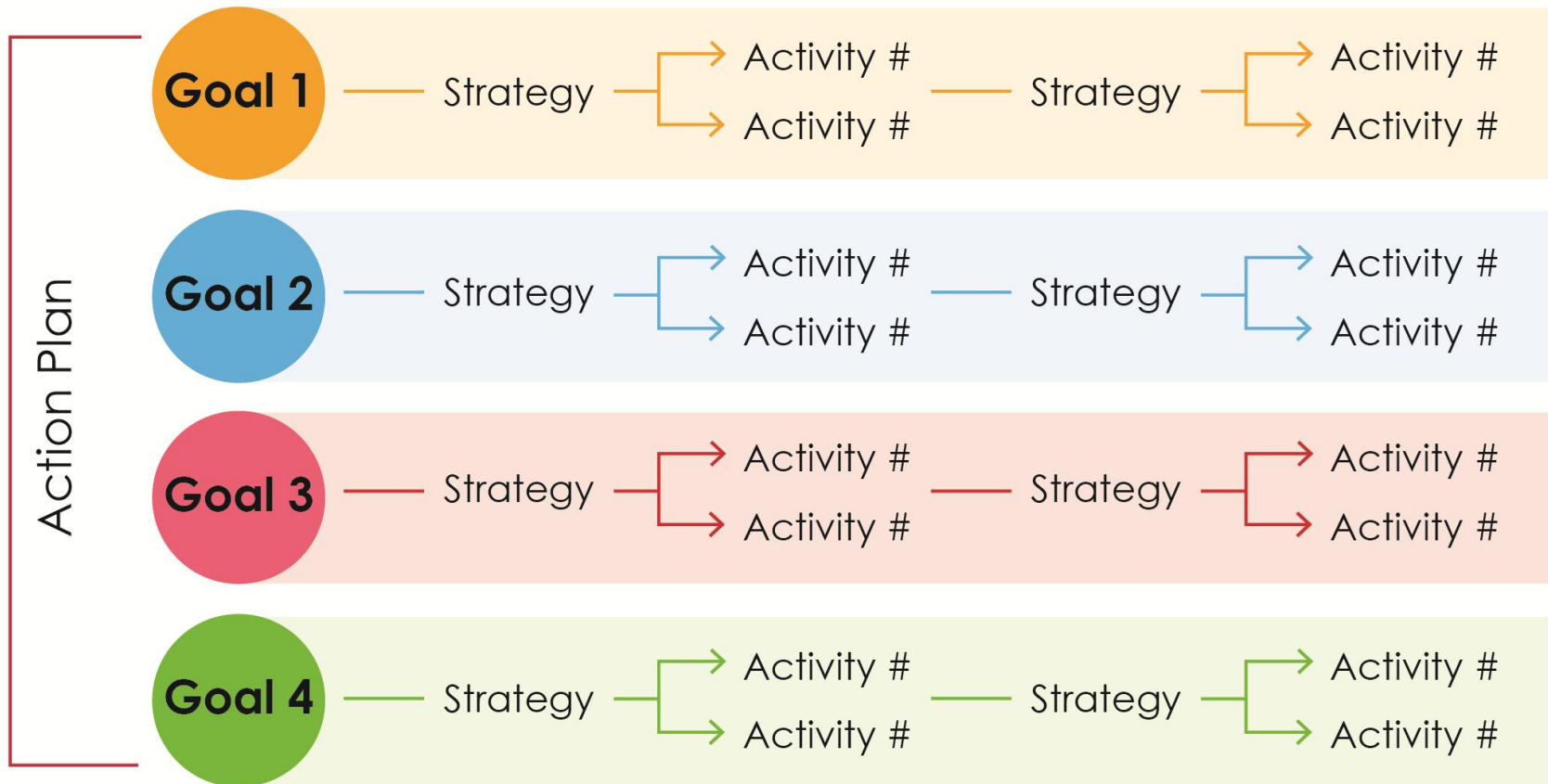
40.5%
from
The County
of Peterborough



51.6%
from
The City
of Peterborough

Age-friendly Plan Architecture

Values + Vision + Objective



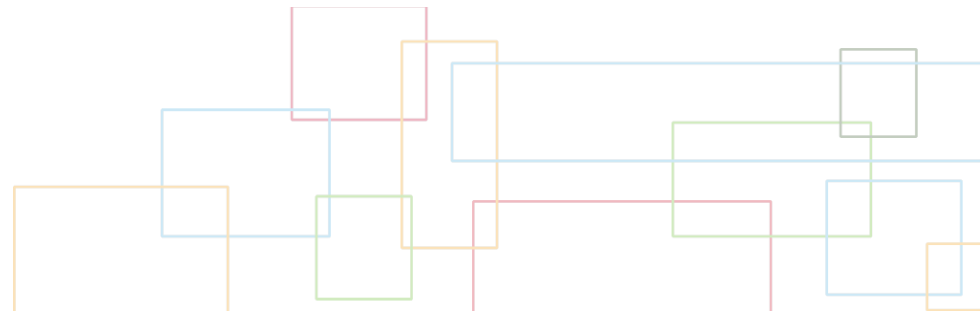
Vision and Objective

Vision

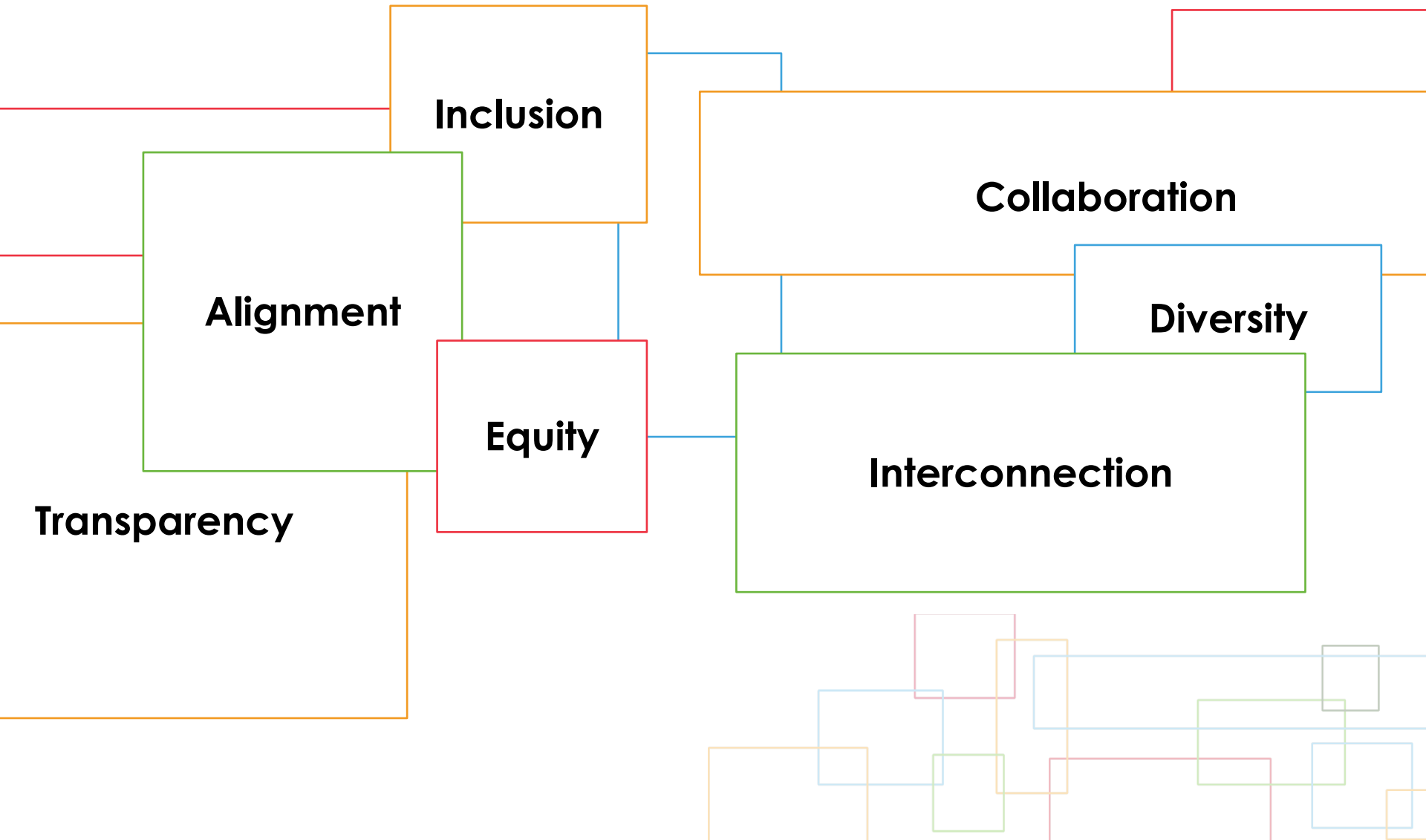
Peterborough is a thriving region that is inclusive, respectful and accessible to people of all ages and abilities.

Objective

The Age-friendly Peterborough Plan will support healthy and active aging; promote intergenerational connections; foster an appreciation of the aging process; and enhance physical, social, and health-related infrastructure.



Values



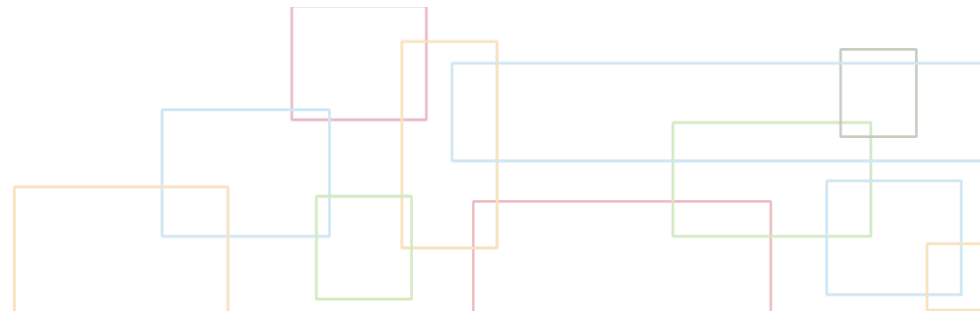
Goals

1. Older adults' basic needs are met.

2. Older adults are able to get around the community.

3. Older adults are supported to build and maintain relationships.

4. Older adults have the opportunity to learn, grow, and contribute.



Goal 1 Highlights

- 1.1 (f)** Support the development of new supportive housing, and co-housing options for seniors.
(City P.D.S; County Townships, ongoing)
- 1.2 (d)** Research the feasibility of developing a local homeshare program focused on older adults. (T.C.A.S; Medium-term)
- 1.4 (a)** Implement cultural competency training for health care professionals.
(P.R.H.C; P.F.H.T, N.C.C; short-term)



Goal 2 Highlights

- 2.1 (c)** Research the feasibility of developing a community ride share program. (T.C.A.S; Medium-term)
- 2.2 (c)** Develop a transit education program that highlights the accessible features of conventional transit, reinforces courtesy seating protocols, and includes free rides. (P.C.O.A; Medium-term)
- 2.4 (b)** Implement continued delivery of, and partnership development for, cycling skills and active transportation workshops accessible to older adults. (GreenUP; short-term)



Goal 3 Highlights

- 3.2 (b)** Support the installation of new age-friendly features in parks across the region. (City C.S.D, County Townships; Medium-term)
- 3.5 (d)** Develop an education and training program for senior serving agencies and housing facilities to foster LGBTQ positive spaces and services. (P.C.O.A; short-term)
- 3.6 (b)** Develop a program to recognize businesses that have age-friendly practices and features. (P.C.O.A; short-term)



Goal 4 Highlights

- 4.1 (a)** Develop an inventory of accessible meeting rooms available for public bookings. (P.C.O.A; Medium-term)
- 4.6 (e)** Develop the annual Seniors' Summit as the premier education event for older adults.
(P.C.O.A; ongoing)
- 4.7 (d)** Support ongoing coordination and strategic planning for older adult programming at seniors' activity centres.
(City C.S.D; S.A.Cs; Medium-term)



Plan Implementation

☐ Council Adoption (Winter, 2017)

- ☐ City, County, Township, First Nations presentations

☐ PCOA Governance Transition (Winter, 2017)

- ☐ New governance structures and processes established
- ☐ Members recruited and selected

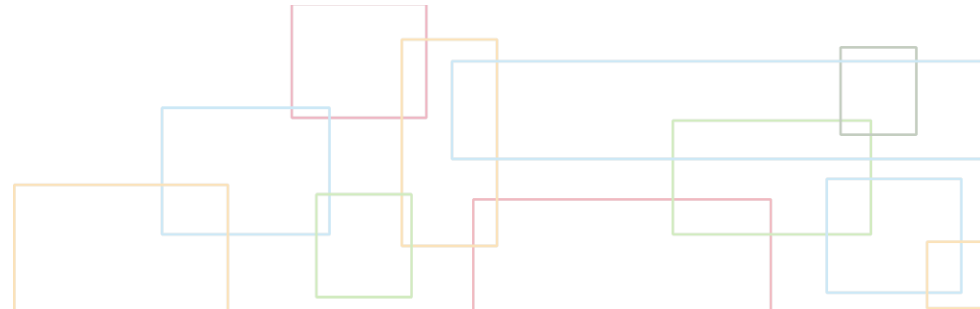
☐ Public Plan Launch (Spring, 2017)

☐ Activities Underway (Winter, 2016 on)

- ☐ P.C.O.A activities selected for implementation
- ☐ Partners responsible for activity implementation as feasible

☐ Annual Report Cards

- ☐ Council Presentations





Chris Kawalec

Community Development Program Manager

[p] 705-748-8830 ext. 3834

[e] ckawalec@peterborough.ca

Sarah Cullingham

Age-friendly Coordinator

[p] 705-748-8830 ext. 3227

[e] scullingham@peterborough.ca

Thank You.



For more information please visit
www.peterboroughcouncilonaging.ca