



PETERBOROUGH ANIMAL CARE CENTRE

Because Animals Deserve More



FROM THIS...



Since 1955 at 385 Lansdowne St. East

TO THIS...



LETT
ARCHITECTS
INC.



New building in 2017 at 1999 Technology Drive

FROM THIS...



Outdated facilities, not inviting,
not meeting current shelter standards of care

TO THIS...



LETT
ARCHITECTS
INC.

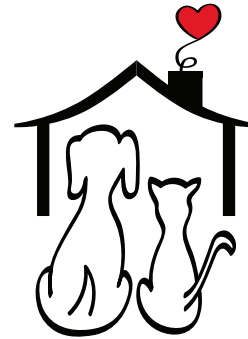


Up-to-date facilities, inviting, uplifting

1 BUILDING, 2 PARTNERS:



**ONTARIO
SPCA**
AND HUMANE SOCIETY
PROTECTING ANIMALS SINCE 1873



**Peterborough
Humane Society**

3 COMPONENTS:

- Peterborough Humane Society Adoption and Education Centre
- Regional High-volume Spay Neuter Clinic
- Ontario SPCA(Society for the Prevention of Cruelty to Animals) Provincial Dog Rehabilitation Centre



CAPTIAL CAMPAIGN: \$9.5M PLANNED FUNDING SOURCES

\$2.0M	Ontario SPCA,
\$1.5M	PHS Sale of Land and Buildings/Investments
\$1.5M	City of Peterborough
\$0.5M	County of Peterborough
\$2.0M	Fundraising: Leadership Giving
\$2.0M	Fundraising: Public Phase
\$9.5M	TOTAL

- *We are currently in the quiet phase of the campaign. Meeting with Federal and Provincial levels of government*
- *Bridge financing for major pledges over 5 year period.*



NORTH ELEVATION

FEATURES:

- Best practices for animal shelter health & medicine
- Medical grade fit and finish
- Disease and infection control focus
- Indoor/outdoor access for animals
- Separate intake, isolation and quarantine



SOUTH ELEVATION

FEATURES:

- Approx 23,000 sq.ft. slab on grade construction
- Building site is shovel ready
- 20-acre site, split zoning: 8 acres for development, 12 acres as open space
- Designed as an integrated model with shared services for operational efficiencies
- Collaboratively designed and developed by leading industry experts
- Inviting layout designed to engage the community



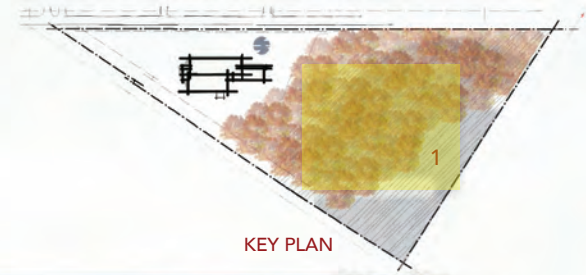
FLOOR PLAN

- 1 MAIN ENTRANCE
- 2 LOBBY
- 3 MEET YOUR MATCH
- 4 SMALL ANIMAL ADOPTION
- 5 MEETING ROOM
- 6 COMMUNITY ROOM
- 7 CAT ADOPTION
- 8 DOG ADOPTION
- 9 DOG AQUATIC THERAPY ROOM
- 10 GROOMING
- 11 ASSESSMENT ROOM
- 12 LIVING ROOM
- 13 DOG ISOLATION
- 14 ADOPTION FOOD PREP.
- 15 ADOPTION LAUNDRY
- 16 STORAGE
- 17 ISOLATION FOOD PREP. & LAUNDRY
- 18 DOG QUARANTINE
- 19 QUARANTINE FOOD PREP. & LAUNDRY
- 20 QUARANTINE YARD
- 21 EXAM ROOM
- 22 OFFICE
- 23 WASHROOM
- 24 CAT QUARANTINE
- 25 CAT ISOLATION
- 26 RECEIVING ENTRANCE / WAITING
- 27 KITCHEN
- 28 SPAY / NEUTER SERVICE WAITING
- 29 SURGERY / PRE-SURGERY & PREP.
- 30 X-RAY
- 31 ANIMAL HOLDING
- 32 FUTURE GROWTH
- ** MECHANICAL MEZZANINE ABOVE

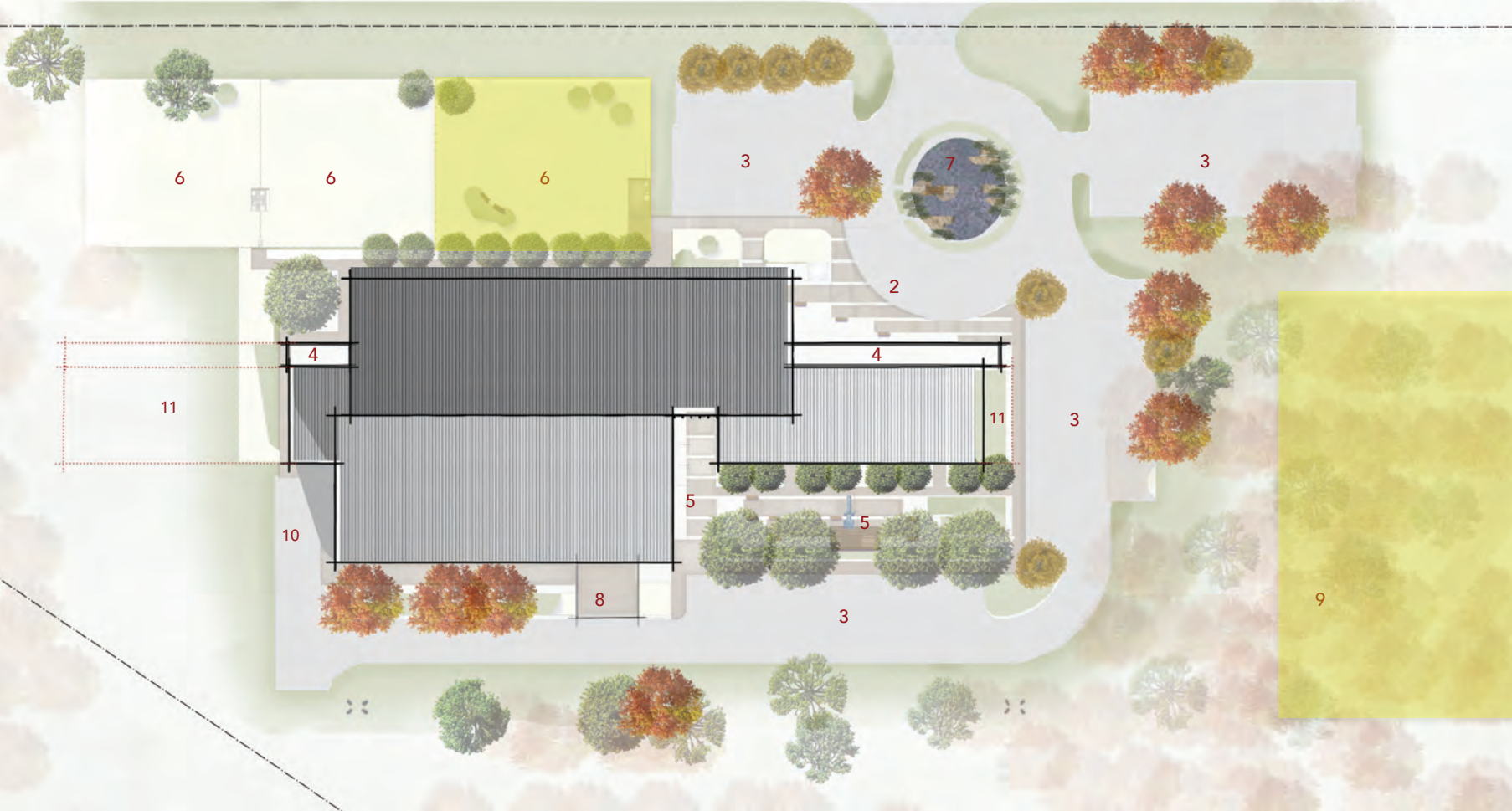
Spaces utilized for the fulfillment of
 Municipal Animal Services contract

SITE PLAN

- 1 - CONSERVATION AREA
- 2 - DROP OFF / BUS STOP
- 3 - PARKING
- 4 - GREEN ROOF
- 5 - MEMORIAL COURTYARD
- 6 - OFF LEASH PLAY YARD
- 7 - STORM WATER POND
- 8 - QUARANTINE YARD
- 9 - ON LEASH FOREST TRAILS
- 10 - LOADING
- 11 - FUTURE GROWTH



TECHNOLOGY DRIVE



Off leash public dog park, plus 12 acres of on-leash walking trails

PETERBOROUGH HUMANE SOCIETY ADOPTION & EDUCATION CENTRE

- Providing shelter and care for lost, abused, neglected and abandoned animals
- Affiliated society of the Ontario SPCA
- Municipal Animal Services contract with the City of Peterborough
- Animal Services contracts with 6 county townships
- Enhanced education programs for the public
- Increased revenue streams through new programs

How PHS is currently funded:

• City of Peterborough	\$340,194
• Shelter services	285,267
• Fundraising/donations	219,730
• Ontario SPCA	44,988
• Investment and other	67,152
<i>Total</i>	<i>\$957,331</i>



“WHY” A REGIONAL HIGH-VOLUME LOW-COST SPAY NEUTER CLINIC?

**OSPCA Spay/Neuter services have spay/neutered over 80,000 animals since 2009. Animal Centres have seen a reduction of cat intake of 19% across the province. Our Barrie Animal Centre, located right beside one of our spay/neuter services, has seen a reduction of cat intake of over 50%!
Pet Owners from Peterborough are travelling to Newmarket Clinic for services**

- Intended to service a population base of 625,000, East and North of GTA including Durham, Kawartha Lakes, Greater Peterborough, Quinte, Lakeshore, Greater Kingston (up to 240 min. drive)
- Perform surgeries for affiliated Humane Societies (Kawartha Lakes, Durham, Northumberland, Quinte, Napanee & Kingston)
- Assist other animal welfare organizations (LAWS, ARK, Operation CatNip, feral cat groups)



ONTARIO SPCA PROVINCIAL DOG REHABILITATION CENTRE

- First of its kind in Canada
- Fully funded by Ontario SPCA
- Province-wide service to Ontario SPCA Branches/Affiliates
- Staffed by experts in dog behaviour
- Viewable to the public
- Access to veterinary care and grooming
- First Nations communities programming



NEW PARTNERSHIP: RESEARCH



- Student placements
- Environmental research
- Research related to planned dog rehabilitation facility
- Genetics research on domestic animal diseases
- Biology research on animal physiology and stress
- Training and education program for animal caregivers in rural, remote indigenous communities
- Animal care field training in the new training facility



NEW PARTNERSHIP: EDUCATION

FLEMING
SIR SANDFORD FLEMING COLLEGE



- Various student placements from wildlife management, early childhood education and social service workers.
- Various student placements from the trades program during and after construction.
- PHS has offered to work in partnership with the College to create a vet tech program and host the classes on site at the new facility.

PROJECT TIMELINE:

Land purchased Nov 2013

All due diligence performed (2012-2015), Re-zoning complete

Design development phase completed by Lett Architects

Class B cost estimate: \$9.5 Million

Building site prepared for construction (shovel ready)

Capital campaign in quiet phase

Construction January 2017, Occupancy early 2018

Operations Summary:

	Year 1	Year 2	Year 3	
Revenues				
Shelter	1,300,000.00	1,360,000.00	1,445,000.00	
Spay Neuter	516,000.00	620,000.00	640,000.00	
Total	1,816,000.00	1,980,000.00	2,085,000.00	
Expenses				
Shelter	1,250,000.00	1,275,000.00	1,360,000.00	
Shelter Buffer	62,500.00	63,750.00	68,000.00	(1)
Spay Neuter	527,000.00	610,000.00	620,000.00	
	1,839,500.00	1,948,750.00	2,048,000.00	
Net Operations	(23,500.00)	31,250.00	37,000.00	

(1)

Represents a 5% buffer on shelter operating expenses



KEY BENEFITS TO CITY

ECONOMIC IMPACT:

- Job Growth: 15FTEs to 45FTEs
- Increase in tourism
- 1999 Technology Drive fully developed
- 385 Lansdowne St. East to be redeveloped

COMMUNITY ENGAGEMENT:

- Invites the public to visit, volunteer, adopt
- Specialized Education Programs for Children
- Low-Cost Spay Neuter
- New public dog park
- Peterborough - pet-friendly
- New Opportunities with Trent and Fleming

WORKING TOGETHER:

- Assist other like-minded charitable area animal welfare orgs fulfill their mandates more economically
- Municipal Airport for dog rehab transfer
- Enhanced partnership and community presence with OSPCA/PHS/City/County
- Wellness programs with First Nations communities.
- Secure, indoor and outdoor rental space for local Dog obedience trainers and other groups

ONTARIO SPCA PARTNERSHIP:

- \$2 million up front investment
- 20 years of contributing to 26.5% of the Centre's operating costs
- Provincial Dog Rehabilitation is operated by the Ontario SPCA
- Peterborough will be at the centre of the stories as the host city
- Job growth: Ontario SPCA will be funding 12 FTEs at new facility