

An aerial photograph of the Fleming College campus. The image shows a large baseball field in the center, surrounded by green grass and trees. To the left of the baseball field are two smaller soccer fields. In the foreground, there is a large, modern building with a flat roof, likely a gymnasium or arena. Several parking lots with cars are scattered throughout the campus. The surrounding area is filled with trees, some of which have autumn-colored foliage. The text "Fleming College" is overlaid in large white letters on the right side of the image.

Fleming College

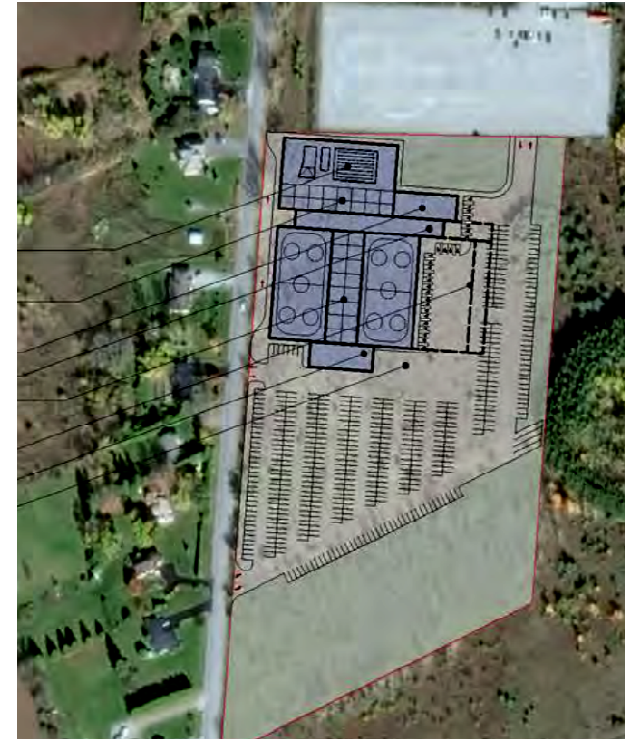
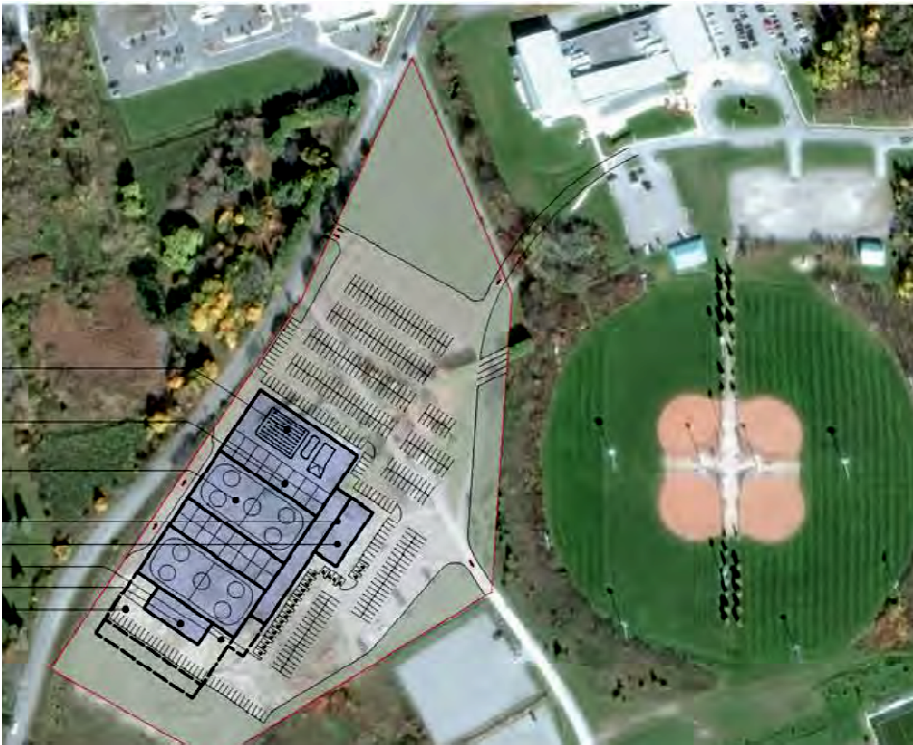
Development of a New Arena Complex

Tony Tilly, President

April 2015

Two Potential Sites

- Two potential sites on 13-15 acres of readily serviceable land
- Proposed long-term lease at \$1 per year



Case Studies for Success

Peterborough Sport & Wellness Centre (PSWC)

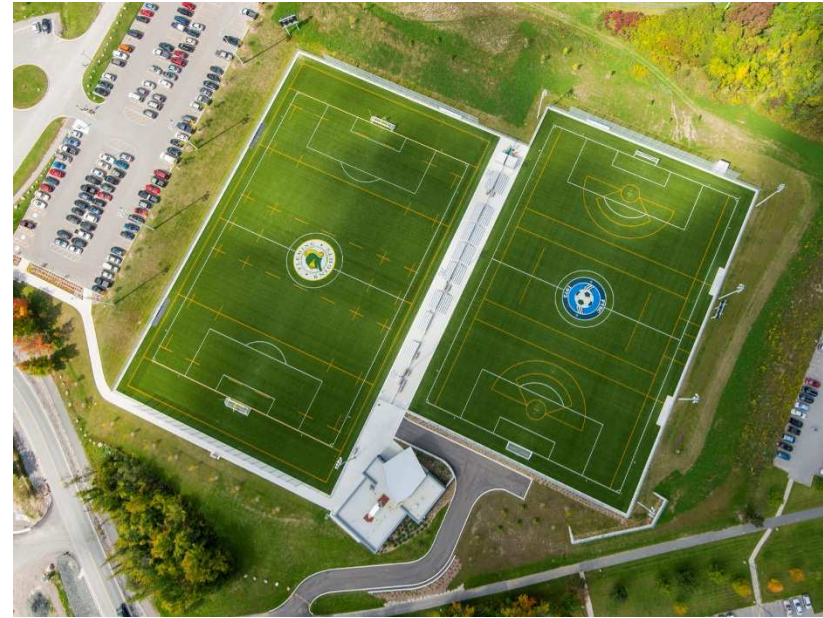
- 2005 - PSWC Opened
 - Funded by The City of Peterborough, Fleming College, Fleming Student Administrative Council, Federal and Provincial Governments
 - Long-term capital and operating cost-sharing agreement
- PSWC has delivered numerous economic and social benefits
- Fleming students contributed close to \$870,000 to operating costs in the last fiscal year through designated fees
- **10 years of successful partnership and effective governance**



Case Studies for Success

Fleming Sport Complex

- Two world-class turf fields
- Field house with public washrooms, change rooms, multi-purpose room and patio
- Project completed on-time and on-budget



“They are beautiful state-of-the-art fields and we never had anything like this before.”

Peterborough Youth Soccer Club president Vic Waselenko
Peterborough Examiner May 31, 2014



Case Studies for Success

Bowers Park

- 4 baseball diamonds
- Change rooms/snack bar
- 40-year renewable lease at \$1 per year executed in 1990
- Partnership with the City and Slo-Pitch Peterborough
- Long-term success in sharing the facility among partners



Sports Tourism

- Significant value in creating a sports and recreation “precinct” within the City of Peterborough
- Easy access:
 - 3 km from Highway 115/Parkway
 - Three Peterborough Transit routes go through the campus
 - Revitalized Brealey Drive and new campus road will enhance north/south travel
 - Pedestrian and bike trails easily modified to access new facility
- Key visitor needs within 3 km
 - Cluster of hotels, restaurants, shopping and related amenities



Fleming College

Misconceptions

- ***“Students would book all the prime-time hours”***
 - Fleming does not have a varsity hockey team
 - OCAA's Hockey League disbanded in 2004
 - Extra or intramural teams have limited requirements shared between Peterborough and Lindsay
 - Governance model at PSWC has proven to be very effective in balancing college/community concerns over shared usage
- ***“The College would run the facility”***
 - The City would operate the facility
 - Level of College involvement and use would be far less than the PSWC

Supplementary Benefits from a Fleming Site

- Revenue and cost savings:
 - Fleming student use of ice for intramural sports
 - Potential student support for selected complementary facilities
 - Academic program synergies
 - Additional ancillary operations (sports camps and clubs)
 - Enrolment growth at Fleming with related economic spin-offs for the City
- Many potential synergies with residence and program partners
 - CHE has run summer hockey residence programs at Fleming since 2002

A Fleming Site is a Strong Choice

- **Cost**
 - \$1 per year long term lease of land
 - Requisite services readily or easily available
- **Speed**
 - Very short potential time-to-completion
- **Flexibility**
 - Capacity to expand to three or four pads
- **Location**
 - Easy access from key transportation links
 - Dozens of food and accommodation options within 3 km
- **Commitment**
 - Demonstrated success in City/College partnerships



Fleming welcomes the opportunity to further explore this exciting development.